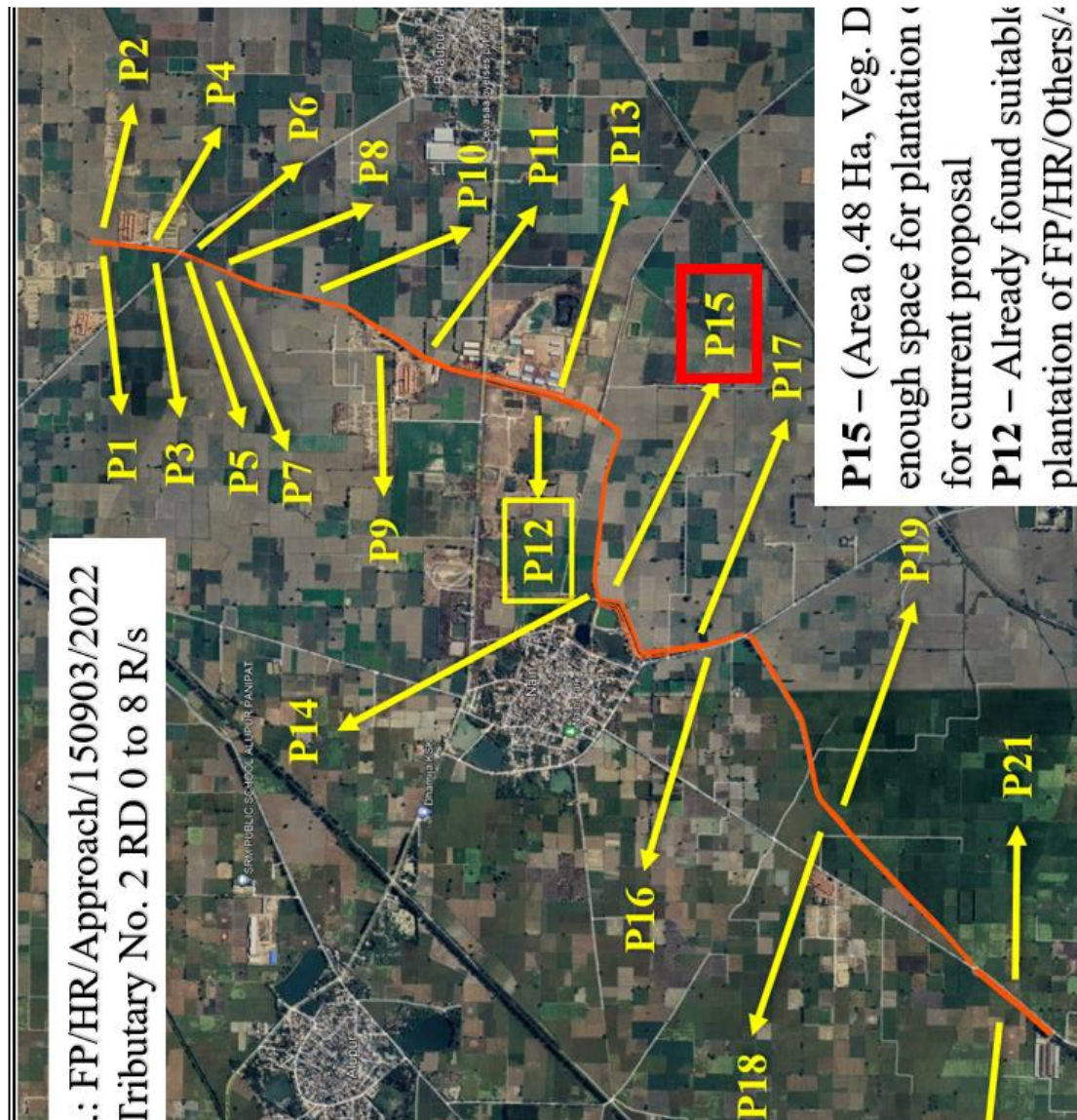


Verification of KML file, DGPS map and Toposheet

Proposal No.: FP/HR/Approach/150903/2022		Date: 8.02.24
Proposal Title: Diversion of 0.0221 Ha forest land for access to Jindal Socks Global Pvt. Ltd. on Samalkha - Dikadla – Hathwala road (ODR), at km stone no. 08 (LHS), Village Dikadla, Tehsil Samalkha, Distt. Panipat (Haryana)		
Area proposed for Diversion (Ha): 0.0221 Ha		
District: Panipat		
<u>PROJECT SITE</u>		
1.	KML File	CORRECT
2.	DGPS Map	CORRECT
	<i>Signed by UA</i>	Yes
3.	Toposheet	CORRECT
	<i>Signed by UA</i>	Yes
<u>COMPENSATORY AFFORESTATION (CA) SITE</u>		
Name of the site: Tributary No. 2 RD 0 to 8		
No. of plants to be planted as per CA Scheme: 120 Additional CA (if any):0 Penal CA (if any): 0		
Total no. of plants:120		
1.	KML File	<p>INCORRECT:</p> <p>i. The KML file for CA site <u>contains 21 parts</u> and have a total area of <u>5.7 Ha</u> which is <u>at least 46 times the area required</u> for the proposed plantation i.e. 0.12 Ha. Refer Annexure I & II for more details.</p> <p>ii. The KML file is <u>exactly same as the CA site proposed in the Proposal No. FP/HR/Others/404568/2022.</u> In this Proposal, <u>Part No. 12</u> of this CA site was found suitable for the target plantation.</p> <p>iii. For the current case, only one part, <u>Part No. 15 is enough</u> for the proposed plantation as it has an area of 0.48 Ha and a vegetation density of 0.4</p> <p>iv. All other parts are not required for this case and can be utilised for CA plantation in other cases. Refer Annexure II for part wise remarks.</p> <p>v. Please revise the KML file to include only Part No. 15 for the CA of current proposal</p>

a.	Visible Area	5.72 Ha(Refer Annexure II for part-wise details)	b. Visible Perimeter: 22.35km(Refer Annexure II for part-wise details)
c.	Visible Vegetation Density	Refer Annexure II	d. Vegetation Density by DFO: NA
e.	Whether proposed plantation can be done in the given space?		NA
2.	DGPS Map	INCORRECT: DGPS map needs to be revised as per the KML site	
Signed by DFO		NA	
3.	Toposheet	INCORRECT: Toposheet needs to be revised as per the KML site	
Signed by DFO		NA	
Attachments:			
<ul style="list-style-type: none"> • Annexure I: Google Earth Imagery of CA Site showing all the parts location. • Annexure II:Part-wise details of the CA site with area, perimeter and vegetation density for each part. Part 12 which was found suitable for CA in Proposal No. FP/HR/Others/404568/2022is highlighted in Blue. The Part 15 which is enough for the proposed plantation of current case is highlighted in Green 			

Annexure I: Google Earth Imagery of CA Site showing all the parts location.



Annexure II: Part-wise details of the CA site with area, perimeter and vegetation density for each part.

- Part 12 which was found suitable for CA in Proposal No. FP/HR/Others/404568/2022 is highlighted in Blue.
- The Part 15 which is enough for the proposed plantation of current case is highlighted in Green

Part No.	Visible Area (in Ha)	Perimeter (in Km)	Vegetation Density	Remarks
P1	0.03	0.22	0.1	Suitable
P2	0.03	0.22	0.1	Suitable
P3	0.08	0.47	0.1	Suitable
P4	0.05	0.48	0.2	Suitable
P5	0.04	0.2	0.2	Suitable

P6	0.01	0.19	0.1	Suitable
P7	0.01	0.19	0.1	Suitable
P8	0.01	0.19	0.1	Suitable
P9	0.56	2.19	0.1	Suitable
P10	0.06	0.99	0.2	Suitable
P11	0.17	1.2	0.5	Not suitable
P12	0.53	0.97	0.2	This part has already been approved for CA plantation of Proposal No. FP/HR/Others/404568/2022
P13	0.50	0.98	0.1	Suitable
P14	0.80	2.34	0.5	Not suitable
P15	0.48	2.33	0.4	This part has enough space for the target plantation of 120 plants. Other sites are not required
P16	0.14	0.62	0.4	Suitable
P17	0.14	0.6	0.4	Suitable
P18	0.65	3.2	0.1	Suitable
P19	0.91	3.21	0.2	Section of road included in kml
P20	0.23	0.79	0.7	Not suitable
P21	0.27	0.77	0.7	Not suitable
Total Area	5.70	22.35		