

**GOVERNMENT OF TELANGANA  
FOREST DEPARTMENT**

From:  
**Sri M.Prudhviraju I.F.S.,**  
Prl. Chief Conservator of Forests  
(Head of Forest Force) I/C  
AranyaBhavan, Saifabad,  
Telangana, Hyderabad-04.

To:  
**The Addl. Director General of Forests(C)**  
Regional Office (South Eastern Zone),  
1<sup>st</sup> and 2<sup>nd</sup> floor, HEPC Building, No.34  
MoEF&CC, GoI, Cathedral Gardens,  
Numganbakkam, Chennai-600034.

**Rc.No.5477/2018/FCA-3/PS, Dated: 14 .06.2019.**

Sir,

Sub:- TSFD – FCA – Permission in an area of 189.6808 ha in Asifabad, Bellampally and Kagaznagar divisions for laying of new third BG railway line along the existing tracks within the railway boundary between Makhudi and Rechni road railway stations in Komarambheem Asifabad and Mancheri districts in favour of South Central Railway, Secunderabad- **Submission of Information sought by the Regional Office, Chennai**- Regarding.

- Ref:-
1. CE (Con-VI), SC Railway, Secunderabad Lr.No. W.Con.182/C/198/KZJ-BPQ/Land dt: 08.08.2018.
  2. PCCF's Rc.No. 5477/2018/FCA-3/PS, Dated: 10.07.2018
  3. CE (Con-VI), SC Railway, Secunderabad Lr.No. W.Con.182/C/198/KZJ-BPQ/Land dt: 08.08.2018.
  4. PCCF's Rc.No. 5477/2018/FCA-3/PS (i), Dated: 14.08.2018
  5. CF, Adilabad Rc.No. 2849/2018-M6 dt: 19.01.2019.
  6. CF & FDPT, Kawal TR Rc.No. 3556/2018/D2 dt:05.02.2019.
  7. PCCF's Rc.No. 5477/2018/FCA-3/PS, Dated: 12.02.2019.
  8. GoI, MoEF & CC, RO(SEZ), Chennai F.No.4-TSA150/2019-CHN/0536 dt: 28.03.2019.
  9. PCCF's Rc.No. 5477/2018/FCA-3/PS, Dated: 09.04.2019.
  10. Dy.CE (Con-II), SC Railway, Kazipet Lr.No. W.Con.182/C/198/KZJ-BPQ/Land dt: 15.05.2019.
  11. DFO, Mancheri Rc.No. 1700/2018/D3 dt: 30.05.2019 copy marked to Nodal Officer (FCA).
  12. DFO, Komarambheem Asifabad Rc.No.5477/2018/S4 dt: 29.05.2019.
  13. PCCF Rc.No. 5477/2018/FCA-3/PS, Dated: 31.05.2019.
  14. GoI, MoEF & CC, RO(SEZ), Chennai F.No.4-TSA150/2019-CHN/0910 dt: 04.06.2019.
  15. GoI, MoEF & CC, RO(SEZ), Chennai Minutes of meeting dt: 10.06.2019.
  16. Dy.CE (Con-II), SC Railway, Kazipet Lr.No. W.Con.182/C/198/KZJ-BPQ/Land dt: 13.06.2019.

Kind attention is invited to the subject and references cited.

Vide ref 15<sup>th</sup> cited, the GoI, MoEF, Regional Office(SEZ) ,Chennai has requested to limit the area required for diversion for the third BG railway line to the minimum possible, survey the same through DGPS and submit the new KML file to the Nodal officer, Telangana and also to upload the same in the ministry's portal and the compensatory afforestation area also to be re-worked as per the present area required for third BG railway line and the railway authorities has promised that all these works will be completed on or before 13.06.2019 for submission to the Nodal Officer, FCA. The said proposal has been decided to be placed in the REC meeting on 18.06.2019.

Further, the vide ref 16<sup>th</sup> cited (copy enclosed) , the Deputy Chief Engineer, (Con-II), SC Railway, Kazipet has submitted that the area required for 3<sup>rd</sup> BG railway line has been assessed as per DGPS survey as 24.7539 Ha and submitted the new KML file as

desired by the GoI, MoEF, Regional Office(SEZ) ,Chennai, along with maps and co-ordinates.

Accordingly, the CA scheme has been prepared to an extent of 25 ha in Comt.No.501 of Chandrapally RF of Rebbena Range of Asifabad division with 7 to 10 years of maintenance with financial outlay of 240.654 lakhs and 25 ha in Compt.No.152 of Kadamba RF of Penchikalapet Range of Kagaznagar division with 7 to 10 years of maintenance with financial outlay of 226.374 lakhs to meet the requirement of CA area to an extent of 50 ha for the required forest area of 24.7539 Ha.

The letter of the Deputy Chief Engineer, (Con-II), SC Railway, Kazipet in reference 16<sup>th</sup> cited, the maps of the revised area of 24.7539 Ha required for 3<sup>rd</sup> BG railway line, maps of CA DFL in Kagaznagar and Asifabad divisions and the CA Scheme abstract for the same along with this letter as additional documents are being uploaded in the ministry's portal against the EDS raised by the RO, Chennai. The new kml files for 24.7539 Ha have been sent by e mail with all the above to the Regional Officer on 13.06.2019 itself.

In this regard it is submitted that there is provision for editing the text of area in the ministry's portal before recommendation and uploading of Part II, Part III, Part IV and Part V. This issue has already been brought to the notice of MoEF&CC in several cases. Hence the required documents against EDS are uploaded as additional documents only.

The Parivesh portal is in public domain. To ensure transparency and to avoid inconsistencies in similar cases of difference in recommendation of areas by State Government with the final approval by the Competent Authority, it is requested to address IGF (FC) to make provision to upload the kml file and associated maps of exact area approved for diversion once Stage I is accorded and both original recommendation and final approved areas shall be displayed.

This is submitted for favour of kind information and necessary action.

Encl- As above

Yours Faithfully  
**Sd/-R.Sobha**  
for Principal Chief Conservator of Forests  
(Head of Forest Force)

Copy to the Conservator of Forests, Adilabad and Conservator of Forests & Filed Director Project Tiger, Kawal TR, Nirmal for information.

Copy to the Deputy Chief Engineer, Cons.II, SCR, Kazipet for information.

Copy to the Special Chief Secretary to government. EFS & T department, Secretariat for information.

Copy submitted to IG of Forests (FC), MoEF &CC, GoI, Indiraparyavaran Bhavan, Jor Bagh, New Delhi-110003.

//true copy//

R. Sobha 14/6/19  
for Principal Chief Conservator of Forests

alavw  
14/6/19.

दक्षिण मध्य रेलवे SOUTH CENTRAL RAILWAY



उपमंडली-नि/II काजीपेट

का कार्यालय

Office of the

Dy. Chief Engineer

Construction-II/Kazipet

सं. No. W.Con.182/C/198/KZJ-BPQ/Land

दि. Dt. 13.06.2019

✓ The Principal Chief Conservator of Forests (FCA)  
Aranya Bhavan, Saifabad, 500004  
Telangana State.

Sub: TSFD – FCA – Permission in an area of 189.6808 Ha in Asifabad, Bellampally and Kagaznagar Divisions for laying of new third BG Railway line along the existing tracks within Railway boundary between Makudi and Rechni Road stations in Komaram Bheem Asifabad and Mancherial Districts in favour of South Central Railway, Secunderabad - Reg.

Ref: MoEF&CC, R.O. (SEZ), Chennai-Minutes of the meeting Dt. 10.06.19

\* \* \*

With reference to the above, as advised the area required by the Railway for permission for laying of 3<sup>rd</sup> BG line only has been assessed as per DGPS survey. Accordingly, the new KML file prepared is submitted herewith to the nodal officer with a request for perusal and uploading the same online (24.7539 Ha)

In this connection, it is once again submitted that the issue of NPV and CA may not arise in this case as the forest land has been diverted for Railway use long time back and an area with total extent of 189.6808 Ha of forest land at present is already in possession with Railway with existing two Railway tracks. The laying of additional third line is proposed on the land already in use by Railways. Therefore, this issue may be flagged during valuation of any financial demand at the meeting by Regional Empowerment Committee, South Eastern Zone, MoEF&CC please.

Hence, it is requested to process for forest & wildlife clearances in connection with laying of 3<sup>rd</sup> Railway line within the land in possession of Railways within the forest area.

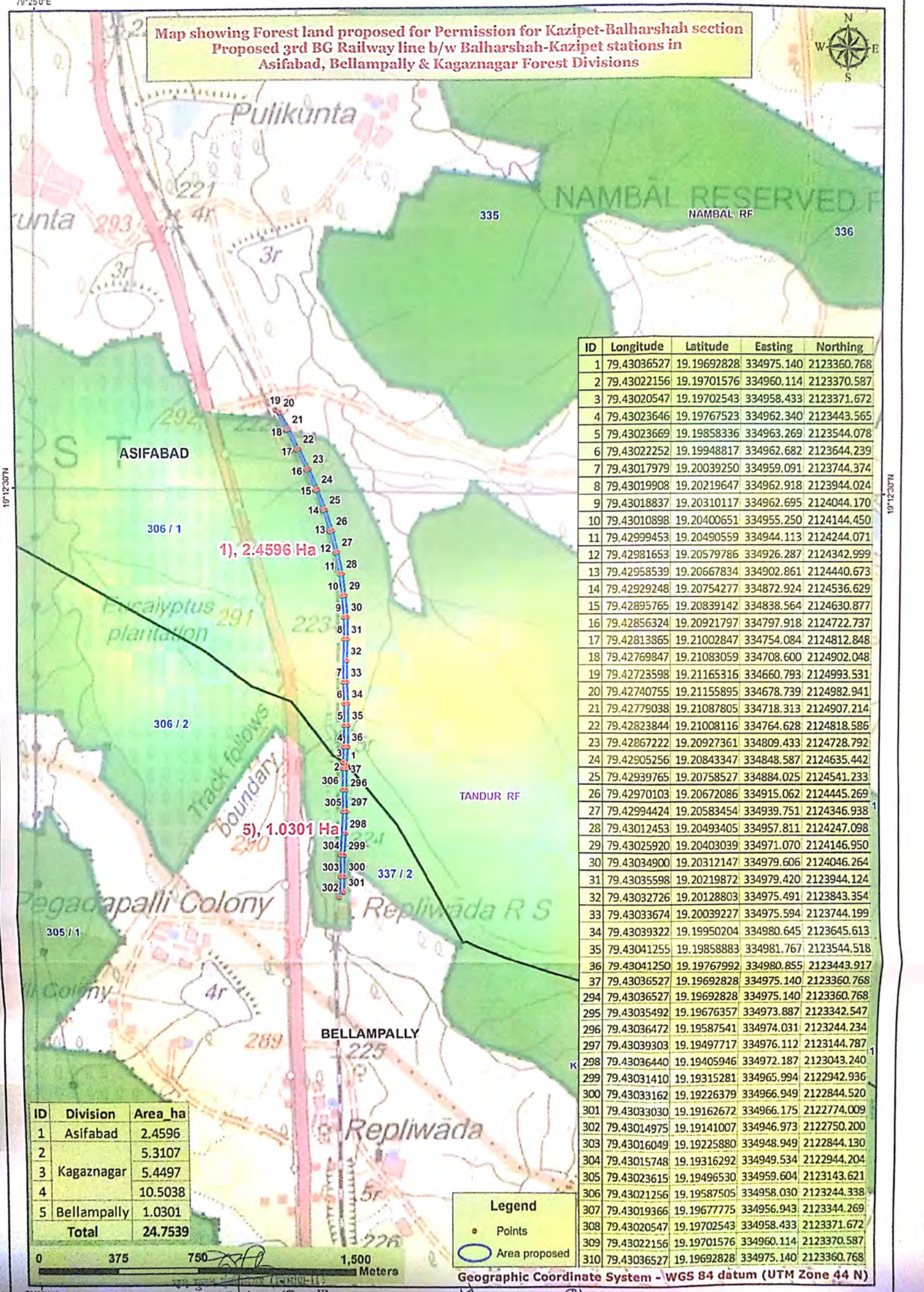
This letter is issued with the consent of Chief Engineer/C-VI/SC, S.C.Railway.

Encl: 01 KML File (Softcopy) &  
02 Topo Maps / Two sets .

(डी.मनोहर रेड्डी D.Manohar Reddy)  
13/6/19

उपमंडली-नि/II/काजीपेट  
Dy. Chief Engineer/C-II  
S.C.Railway, Kazipet

Map showing Forest land proposed for Permission for Kazipet-Balharshah section  
Proposed 3rd BG Railway line b/w Balharshah-Kazipet stations in  
Asifabad, Bellampally & Kagaznagar Forest Divisions



ID	Longitude	Latitude	Easting	Northing
1	79.43036527	19.19692828	334975.140	2123360.768
2	79.43022156	19.19701576	334960.114	2123370.587
3	79.43020547	19.19702543	334958.433	2123371.672
4	79.43023646	19.19767523	334962.340	2123443.565
5	79.43023669	19.19858336	334963.269	2123544.078
6	79.43022252	19.19948817	334962.682	2123644.239
7	79.43017979	19.20039250	334959.091	2123744.374
8	79.43019908	19.20219647	334962.918	2123944.024
9	79.43018837	19.20310117	334962.695	2124044.170
10	79.43010898	19.20400651	334955.250	2124144.450
11	79.42999453	19.20490559	334944.113	2124244.071
12	79.42981653	19.20579786	334926.287	2124342.999
13	79.42958539	19.20667834	334902.861	2124440.673
14	79.42929248	19.20754277	334872.924	2124536.629
15	79.42895765	19.20839142	334838.564	2124630.877
16	79.42856324	19.20921797	334797.918	2124722.737
17	79.42813865	19.21002847	334754.084	2124812.848
18	79.42769847	19.21083059	334708.600	2124902.048
19	79.42723598	19.21165316	334660.793	2124993.531
20	79.42740755	19.21155895	334678.739	2124982.941
21	79.42779038	19.21087805	334718.313	2124907.214
22	79.42823844	19.21008116	334764.628	2124818.586
23	79.42867222	19.20927361	334809.433	2124728.792
24	79.42905256	19.20843347	334848.587	2124635.442
25	79.42939765	19.20758527	334884.025	2124541.233
26	79.42970103	19.20672086	334915.062	2124445.269
27	79.42994424	19.20583454	334939.751	2124346.938
28	79.43012453	19.20493405	334957.811	2124247.098
29	79.43025920	19.20403039	334971.070	2124146.950
30	79.43034900	19.20312147	334979.606	2124046.264
31	79.43035598	19.20219872	334979.420	2123944.124
32	79.43032726	19.20128803	334975.491	2123843.354
33	79.43033674	19.20039227	334975.594	2123744.199
34	79.43039322	19.19950204	334980.645	2123645.613
35	79.43041255	19.19858883	334981.767	2123544.518
36	79.43041250	19.19767992	334980.855	2123443.917
37	79.43036527	19.19692828	334975.140	2123360.768
294	79.43036527	19.19692828	334975.140	2123360.768
295	79.43035492	19.19676357	334973.887	2123342.547
296	79.43036472	19.19587541	334974.031	2123244.234
297	79.43039303	19.19497717	334976.112	2123144.787
298	79.43036440	19.19405946	334972.187	2123043.240
299	79.43031410	19.19315281	334965.994	2122942.936
300	79.43033162	19.19226379	334966.949	2122844.520
301	79.43033030	19.19162672	334966.175	2122774.009
302	79.43014975	19.19141007	334946.973	2122750.200
303	79.43016049	19.19225880	334948.949	2122844.130
304	79.43015748	19.19316292	334949.534	2122944.204
305	79.43023615	19.19496530	334959.604	2123143.621
306	79.43021256	19.19587505	334958.030	2123244.338
307	79.43019366	19.19677775	334956.943	2123344.269
308	79.43020547	19.19702543	334958.433	2123371.672
309	79.43022156	19.19701576	334960.114	2123370.587
310	79.43036527	19.19692828	334975.140	2123360.768

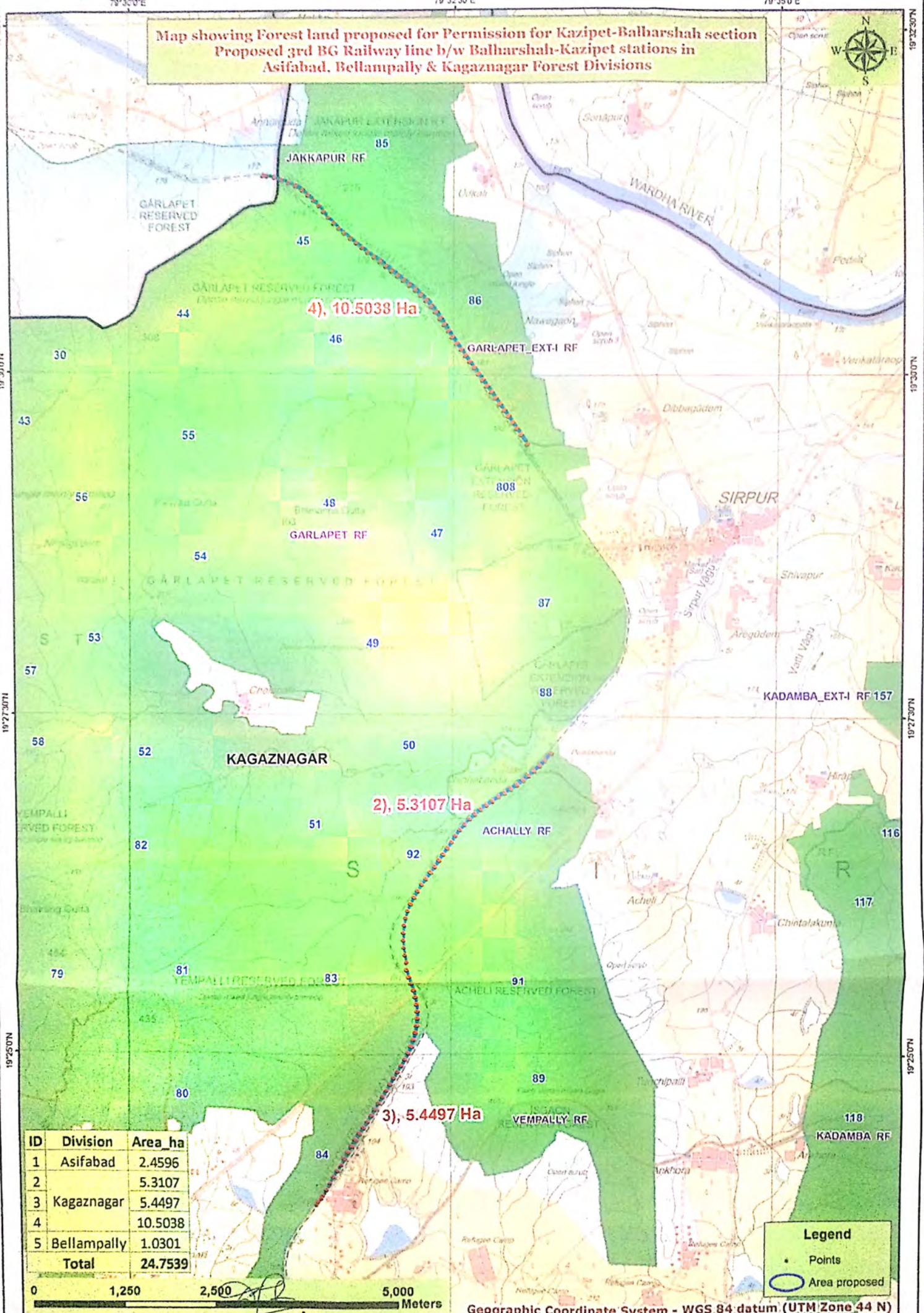
ID	Division	Area ha
1	Asifabad	2.4596
2		5.3107
3	Kagaznagar	5.4497
4		10.5038
5	Bellampally	1.0301
<b>Total</b>		<b>24.7539</b>

**Legend**

- Points
- Area proposed

Geographic Coordinate System - WGS 84 datum (UTM Zone 44 N)

**Map showing Forest land proposed for Permission for Kazipet-Balharshah section  
Proposed 3rd BG Railway line b/w Balharshah-Kazipet stations in  
Asifabad, Bellampally & Kagaznagar Forest Divisions**



**4), 10.5038 Ha**

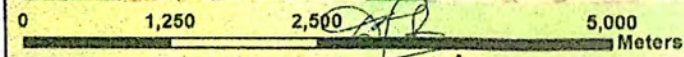
**2), 5.3107 Ha**

**3), 5.4497 Ha**

ID	Division	Area_ha
1	Asifabad	2.4596
2		5.3107
3	Kagaznagar	5.4497
4		10.5038
5	Bellampally	1.0301
<b>Total</b>		<b>24.7539</b>

**Legend**

- Points
- Area proposed



Geographic Coordinate System - WGS 84 datum (UTM Zone 44 N)

ID	Longitude	Latitude	Easting	Northing	Division	Sno
38	79.55457354	19.45376252	348273.530	2151674.003	Kagaznagar	
39	79.55373765	19.45286275	348184.934	2151575.153	Kagaznagar	
40	79.55306519	19.45220312	348113.719	2151502.738	Kagaznagar	
41	79.55234768	19.45158205	348037.811	2151434.632	Kagaznagar	
42	79.55163824	19.45097384	347962.760	2151367.941	Kagaznagar	
43	79.55097085	19.45038262	347892.140	2151303.094	Kagaznagar	
44	79.55015068	19.44983446	347805.520	2151243.149	Kagaznagar	
45	79.54936327	19.44932003	347722.369	2151186.909	Kagaznagar	
46	79.54855409	19.44882640	347636.952	2151132.989	Kagaznagar	
47	79.54773978	19.44835128	347551.013	2151081.124	Kagaznagar	
48	79.54697795	19.44783297	347470.543	2151024.432	Kagaznagar	
49	79.54619055	19.44731951	347387.393	2150968.300	Kagaznagar	
50	79.54542940	19.44678720	347306.980	2150910.059	Kagaznagar	
51	79.54469862	19.44622338	347229.726	2150848.304	Kagaznagar	
52	79.54401662	19.44561024	347157.547	2150781.047	Kagaznagar	
53	79.54337964	19.44496810	347090.067	2150710.539	Kagaznagar	
54	79.54275960	19.44429218	347024.333	2150636.279	Kagaznagar	
55	79.54221931	19.44357020	346966.928	2150556.850	Kagaznagar	
56	79.54172307	19.44281391	346914.117	2150473.584	Kagaznagar	
57	79.54119103	19.44205839	346857.546	2150390.436	Kagaznagar	
58	79.54064226	19.44131235	346799.228	2150308.351	Kagaznagar	
59	79.54012416	19.44056259	346744.125	2150225.829	Kagaznagar	
60	79.53959153	19.43980998	346687.494	2150143.004	Kagaznagar	
61	79.53901581	19.43907412	346626.354	2150062.070	Kagaznagar	
62	79.53843744	19.43835380	346564.950	2149982.860	Kagaznagar	
63	79.53790797	19.43761616	346508.663	2149901.689	Kagaznagar	
64	79.53740875	19.43685687	346455.531	2149818.095	Kagaznagar	
65	79.53692779	19.43608383	346404.304	2149732.964	Kagaznagar	
66	79.53651106	19.43528927	346359.800	2149645.393	Kagaznagar	
67	79.53614171	19.43447038	346320.248	2149555.086	Kagaznagar	
68	79.53587387	19.43362218	346291.326	2149461.445	Kagaznagar	
69	79.53571070	19.43274743	346273.369	2149364.773	Kagaznagar	
70	79.53562483	19.43185940	346263.516	2149266.560	Kagaznagar	
71	79.53560310	19.43096640	346260.394	2149167.742	Kagaznagar	
72	79.53567401	19.43007916	346267.005	2149069.477	Kagaznagar	
73	79.53581718	19.42919685	346281.208	2148971.695	Kagaznagar	
74	79.53602365	19.42832406	346302.067	2148874.908	Kagaznagar	
75	79.53599577	19.42831812	346299.134	2148874.276	Kagaznagar	
76	79.53576865	19.42919697	346276.112	2148971.751	Kagaznagar	
77	79.53561615	19.43008203	346260.933	2149069.846	Kagaznagar	
78	79.53553620	19.43097565	346253.378	2149168.825	Kagaznagar	
79	79.53554927	19.43187160	346255.594	2149267.979	Kagaznagar	
80	79.53562699	19.43276659	346264.597	2149366.968	Kagaznagar	
81	79.53579303	19.43365055	346282.864	2149464.658	Kagaznagar	
82	79.53605689	19.43451318	346311.382	2149559.899	Kagaznagar	
83	79.53642017	19.43533956	346350.304	2149651.040	Kagaznagar	
84	79.53683374	19.43614665	346394.488	2149740.000	Kagaznagar	
85	79.53731332	19.43691665	346445.568	2149824.797	Kagaznagar	
86	79.53781579	19.43768050	346499.045	2149908.893	Kagaznagar	
87	79.53834976	19.43842375	346555.809	2149990.680	Kagaznagar	
88	79.53890237	19.43915655	346614.521	2150071.295	Kagaznagar	
89	79.53946174	19.43988610	346673.938	2150151.544	Kagaznagar	
90	79.53999617	19.44064105	346730.761	2150234.627	Kagaznagar	
91	79.54051913	19.44139909	346786.381	2150318.062	Kagaznagar	
92	79.54106175	19.44213512	346844.044	2150399.043	Kagaznagar	
93	79.54159153	19.44288709	346900.374	2150481.802	Kagaznagar	
94	79.54212014	19.44364066	346956.582	2150564.737	Kagaznagar	
95	79.54267080	19.44437483	347015.087	2150645.505	Kagaznagar	
96	79.54328500	19.44505738	347080.213	2150720.505	Kagaznagar	
97	79.54392757	19.44570459	347148.286	2150791.568	Kagaznagar	

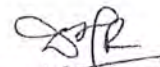
2

Pranav  
SSE/DRG/KZJ

G.H.  
SSE/DRG/KZJ

Dy. Chief Engineer (Non-II)  
S.C. RAILWAY, KAZIPET

ID	Longitude	Latitude	Easting	Northing	Division	Sno
98	79.54461726	19.44632382	347221.277	2150859.493	Kagaznagar	
99	79.54534148	19.44690543	347297.860	2150923.223	Kagaznagar	
100	79.54610049	19.44744720	347378.056	2150982.513	Kagaznagar	
101	79.54688249	19.44795705	347460.637	2151038.250	Kagaznagar	
102	79.54765896	19.44848439	347542.652	2151095.929	Kagaznagar	
103	79.54845194	19.44897892	347626.370	2151149.961	Kagaznagar	
104	79.54922977	19.44950709	347708.527	2151207.730	Kagaznagar	
105	79.55001245	19.45001837	347791.178	2151263.627	Kagaznagar	
106	79.55078927	19.45054455	347873.227	2151321.178	Kagaznagar	
107	79.55150751	19.45110544	347949.159	2151382.622	Kagaznagar	
108	79.55222507	19.45170832	348025.056	2151448.715	Kagaznagar	
109	79.55293208	19.45231967	348099.854	2151515.756	Kagaznagar	
110	79.55359975	19.45297406	348170.560	2151587.594	Kagaznagar	
111	79.55440288	19.45383831	348255.683	2151682.541	Kagaznagar	
112	79.55457354	19.45376252	348273.530	2151674.003	Kagaznagar	
113	79.53638396	19.42655142	346338.233	2148678.389	Kagaznagar	
114	79.53667481	19.42569150	346367.967	2148582.953	Kagaznagar	
115	79.53695794	19.42483117	346396.888	2148487.477	Kagaznagar	
116	79.53719714	19.42396040	346421.187	2148390.887	Kagaznagar	
117	79.53736545	19.42307511	346438.028	2148292.751	Kagaznagar	
118	79.53745802	19.42218022	346446.909	2148193.622	Kagaznagar	
119	79.53746678	19.42128088	346446.983	2148094.074	Kagaznagar	
120	79.53739622	19.42038430	346438.731	2147994.902	Kagaznagar	
121	79.53724083	19.41949693	346421.579	2147896.825	Kagaznagar	
122	79.53701039	19.41862472	346396.562	2147800.493	Kagaznagar	
123	79.53669999	19.41777443	346363.167	2147706.659	Kagaznagar	
124	79.53632444	19.41694797	346322.953	2147615.521	Kagaznagar	
125	79.53588606	19.41614900	346276.167	2147527.481	Kagaznagar	
126	79.53540042	19.41537257	346224.437	2147441.978	Kagaznagar	
127	79.53490579	19.41459907	346171.768	2147356.808	Kagaznagar	
128	79.53442908	19.41381762	346120.971	2147270.742	Kagaznagar	
129	79.53394431	19.41304001	346069.331	2147185.108	Kagaznagar	
130	79.53345958	19.41226239	346017.695	2147099.473	Kagaznagar	
131	79.53297461	19.41148487	345966.034	2147013.850	Kagaznagar	
132	79.53248979	19.41070738	345914.387	2146928.230	Kagaznagar	
133	79.53200366	19.40993041	345862.604	2146842.668	Kagaznagar	
134	79.53151926	19.40915262	345811.000	2146757.015	Kagaznagar	
135	79.53103588	19.40837733	345759.506	2146671.637	Kagaznagar	
136	79.53051023	19.40762177	345703.590	2146588.481	Kagaznagar	
137	79.53000933	19.40685216	345650.261	2146503.748	Kagaznagar	
138	79.52951702	19.40607740	345597.827	2146418.438	Kagaznagar	
139	79.52903418	19.40530006	345546.386	2146332.833	Kagaznagar	
140	79.52853638	19.40451510	345493.365	2146246.400	Kagaznagar	
141	79.52812783	19.40370828	345449.698	2146157.465	Kagaznagar	
142	79.52764548	19.40293365	345398.308	2146072.161	Kagaznagar	
143	79.52711326	19.40218373	345341.705	2145989.637	Kagaznagar	
144	79.52658848	19.40141248	345285.863	2145904.744	Kagaznagar	
145	79.52615484	19.40060994	345239.562	2145816.307	Kagaznagar	
146	79.52572288	19.39980972	345193.438	2145728.125	Kagaznagar	
147	79.52523830	19.39903209	345141.810	2145642.491	Kagaznagar	
148	79.52500917	19.39866549	345117.399	2145602.121	Kagaznagar	
149	79.52439722	19.39794261	345052.446	2145522.662	Kagaznagar	
150	79.52463075	19.39832569	345077.335	2145564.851	Kagaznagar	
151	79.52512543	19.39909939	345130.020	2145650.042	Kagaznagar	
152	79.52562130	19.39985948	345182.818	2145733.724	Kagaznagar	
153	79.52607204	19.40065463	345230.908	2145821.328	Kagaznagar	
154	79.52653011	19.40146128	345279.779	2145910.197	Kagaznagar	
155	79.52703441	19.40223440	345333.472	2145995.315	Kagaznagar	
156	79.52755349	19.40298150	345388.692	2146077.540	Kagaznagar	
157	79.52788917	19.40384005	345424.758	2146172.264	Kagaznagar	

  
 Dy. Comm. Bangalore (Comm-4)  
 S.C. Railway, KAZIPET

Rhoma-  
SSE/1026

SSE/1026

ID	Longitude	Latitude	Easting	Northing	Division	Sno
158	79.52836635	19.40461586	345475.605	2146257.704	Kagaznagar	
159	79.52883145	19.40540044	345525.190	2146344.125	Kagaznagar	
160	79.52930203	19.40621135	345575.376	2146433.456	Kagaznagar	
161	79.52983053	19.40700326	345631.625	2146520.633	Kagaznagar	
162	79.53039939	19.40769210	345692.016	2146596.365	Kagaznagar	
163	79.53091354	19.40844733	345746.724	2146679.495	Kagaznagar	
164	79.53141268	19.40921235	345799.863	2146763.721	Kagaznagar	
165	79.53189728	19.40999045	345851.488	2146849.409	Kagaznagar	
166	79.53238321	19.41076712	345903.251	2146934.937	Kagaznagar	
167	79.53286809	19.41154470	345954.904	2147020.567	Kagaznagar	
168	79.53335121	19.41231920	346006.369	2147105.857	Kagaznagar	
169	79.53382137	19.41310901	346056.486	2147192.854	Kagaznagar	
170	79.53430723	19.41388834	346108.241	2147278.677	Kagaznagar	
171	79.53479969	19.41465958	346160.682	2147363.600	Kagaznagar	
172	79.53528359	19.41543357	346212.227	2147448.834	Kagaznagar	
173	79.53574881	19.41621205	346261.813	2147534.582	Kagaznagar	
174	79.53617192	19.41700036	346306.986	2147621.456	Kagaznagar	
175	79.53651883	19.41783065	346344.196	2147713.044	Kagaznagar	
176	79.53682510	19.41866721	346377.144	2147805.362	Kagaznagar	
177	79.53706238	19.41952591	346402.868	2147900.192	Kagaznagar	
178	79.53723511	19.42039993	346421.827	2147996.775	Kagaznagar	
179	79.53734286	19.42127619	346433.966	2148093.665	Kagaznagar	
180	79.53733522	19.42216485	346433.999	2148192.030	Kagaznagar	
181	79.53724373	19.42305399	346425.228	2148290.522	Kagaznagar	
182	79.53709655	19.42393201	346410.597	2148387.834	Kagaznagar	
183	79.53685857	19.42479949	346386.423	2148484.060	Kagaznagar	
184	79.53657519	19.42566080	346357.476	2148579.643	Kagaznagar	
185	79.53628425	19.42652094	346327.735	2148675.104	Kagaznagar	
186	79.53599248	19.42738101	346297.907	2148770.559	Kagaznagar	
187	79.53609221	19.42741140	346308.408	2148773.833	Kagaznagar	
188	79.53638396	19.42655142	346338.233	2148678.389	Kagaznagar	
189	79.51780049	19.52365686	344479.576	2159442.953	Kagaznagar	
190	79.51874720	19.52346713	344578.747	2159421.094	Kagaznagar	
191	79.51967317	19.52320215	344675.668	2159390.926	Kagaznagar	
192	79.52057291	19.52286576	344769.769	2159352.878	Kagaznagar	
193	79.52145641	19.52259525	344862.229	2159322.137	Kagaznagar	
194	79.52233950	19.52209521	344954.427	2159265.992	Kagaznagar	
195	79.52308939	19.52144054	345032.500	2159192.853	Kagaznagar	
196	79.52379092	19.52083058	345105.540	2159124.707	Kagaznagar	
197	79.52446175	19.52016988	345175.311	2159050.972	Kagaznagar	
198	79.52507410	19.51945453	345238.893	2158971.242	Kagaznagar	
199	79.52565606	19.51873531	345299.283	2158891.112	Kagaznagar	
200	79.52632427	19.51811889	345368.823	2158822.282	Kagaznagar	
201	79.52701323	19.51749850	345440.537	2158752.995	Kagaznagar	
202	79.52773017	19.51692101	345515.230	2158688.431	Kagaznagar	
203	79.52845601	19.51635155	345590.864	2158624.747	Kagaznagar	
204	79.52921736	19.51580447	345670.247	2158563.510	Kagaznagar	
205	79.52997318	19.51525320	345749.046	2158501.813	Kagaznagar	
206	79.53072619	19.51470985	345827.557	2158440.997	Kagaznagar	
207	79.53151871	19.51425519	345910.302	2158389.961	Kagaznagar	
208	79.53231589	19.51373097	345993.468	2158331.223	Kagaznagar	
209	79.53308127	19.51315282	346073.247	2158266.545	Kagaznagar	
210	79.53383900	19.51263412	346152.280	2158208.454	Kagaznagar	
211	79.53459659	19.51205219	346231.239	2158143.364	Kagaznagar	
212	79.53534911	19.51152484	346309.718	2158084.321	Kagaznagar	
213	79.53611214	19.51097592	346389.280	2158022.883	Kagaznagar	
214	79.53686605	19.51041182	346467.871	2157959.771	Kagaznagar	
215	79.53760024	19.50980812	346544.356	2157892.295	Kagaznagar	
216	79.53829931	19.50915828	346617.111	2157819.745	Kagaznagar	
217	79.53895965	19.50847688	346685.773	2157743.735	Kagaznagar	

From  
SSE/DRG/22

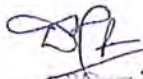
G.H  
SSE/DRG/22

S.G. RAILWAY, RAJIBI



ID	Longitude	Latitude	Easting	Northing	Division	Sno
218	79.53956049	19.50772128	346748.121	2157659.567	Kagaznagar	
219	79.54009700	19.50694105	346803.695	2157572.730	Kagaznagar	
220	79.54062597	19.50619700	346858.512	2157489.905	Kagaznagar	
221	79.54113561	19.50542000	346911.270	2157403.450	Kagaznagar	
222	79.54163444	19.50465066	346962.900	2157317.852	Kagaznagar	
223	79.54216556	19.50391543	347017.953	2157236.002	Kagaznagar	
224	79.54273001	19.50320006	347076.521	2157156.320	Kagaznagar	
225	79.54328838	19.50246166	347134.432	2157074.095	Kagaznagar	
226	79.54384339	19.50172725	347191.995	2156992.315	Kagaznagar	
227	79.54439649	19.50099064	347249.355	2156910.293	Kagaznagar	
228	79.54496095	19.50026957	347307.922	2156829.981	Kagaznagar	
229	79.54551653	19.49952848	347365.539	2156747.462	Kagaznagar	
230	79.54605948	19.49878115	347421.825	2156664.263	Kagaznagar	
231	79.54661003	19.49804922	347478.925	2156582.763	Kagaznagar	
232	79.54716967	19.49732176	347536.982	2156501.749	Kagaznagar	
233	79.54772649	19.49658595	347594.737	2156419.813	Kagaznagar	
234	79.54828297	19.49585328	347652.459	2156338.227	Kagaznagar	
235	79.54882906	19.49510663	347709.078	2156255.102	Kagaznagar	
236	79.54938198	19.49437673	347766.431	2156173.824	Kagaznagar	
237	79.54991938	19.49362055	347822.130	2156089.652	Kagaznagar	
238	79.55046134	19.49288257	347878.325	2156007.492	Kagaznagar	
239	79.55130375	19.49169702	347965.640	2155875.527	Kagaznagar	
240	79.55113017	19.49160544	347947.335	2155865.544	Kagaznagar	
241	79.55029856	19.49277381	347861.138	2155995.598	Kagaznagar	
242	79.54975354	19.49351602	347804.625	2156078.230	Kagaznagar	
243	79.54922296	19.49426448	347749.634	2156161.542	Kagaznagar	
244	79.54866525	19.49500084	347691.786	2156243.538	Kagaznagar	
245	79.54812250	19.49574146	347635.511	2156325.992	Kagaznagar	
246	79.54756544	19.49647645	347577.731	2156407.836	Kagaznagar	
247	79.54701088	19.49721084	347520.212	2156489.614	Kagaznagar	
248	79.54644727	19.49794043	347461.740	2156570.867	Kagaznagar	
249	79.54589389	19.49867463	347404.345	2156652.621	Kagaznagar	
250	79.54535430	19.49941743	347348.407	2156735.315	Kagaznagar	
251	79.54480150	19.50015493	347291.078	2156817.435	Kagaznagar	
252	79.54423342	19.50088225	347232.137	2156898.442	Kagaznagar	
253	79.54368168	19.50161708	347174.919	2156980.265	Kagaznagar	
254	79.54312986	19.50235347	347117.692	2157062.262	Kagaznagar	
255	79.54257044	19.50308558	347059.666	2157143.792	Kagaznagar	
256	79.54200019	19.50381018	347000.496	2157224.500	Kagaznagar	
257	79.54145503	19.50454944	346943.974	2157306.809	Kagaznagar	
258	79.54094151	19.50530708	346890.791	2157391.125	Kagaznagar	
259	79.54040027	19.50605384	346834.688	2157474.261	Kagaznagar	
260	79.53986070	19.50679833	346778.760	2157557.144	Kagaznagar	
261	79.53932851	19.50754600	346723.609	2157640.374	Kagaznagar	
262	79.53874561	19.50827083	346663.115	2157721.121	Kagaznagar	
263	79.53809601	19.50894966	346595.578	2157796.836	Kagaznagar	
264	79.53741267	19.50959008	346524.465	2157868.330	Kagaznagar	
265	79.53668967	19.51019028	346449.151	2157935.409	Kagaznagar	
266	79.53594460	19.51076071	346371.493	2157999.212	Kagaznagar	
267	79.53518738	19.51131348	346292.544	2158061.073	Kagaznagar	
268	79.53442686	19.51185925	346213.243	2158122.162	Kagaznagar	
269	79.53367768	19.51241462	346135.142	2158184.304	Kagaznagar	
270	79.53292310	19.51296735	346056.471	2158246.158	Kagaznagar	
271	79.53217863	19.51352843	345978.871	2158308.929	Kagaznagar	
272	79.53140249	19.51406170	345897.920	2158368.650	Kagaznagar	
273	79.53062241	19.51458147	345816.544	2158426.881	Kagaznagar	
274	79.52988496	19.51514657	345739.686	2158490.091	Kagaznagar	
275	79.52913599	19.51570654	345661.614	2158552.743	Kagaznagar	
276	79.52838766	19.51626576	345583.610	2158615.313	Kagaznagar	
277	79.52764386	19.51682926	345506.085	2158678.352	Kagaznagar	

4

  
 Dy. Chief Engineer (Con.-II)  
 S.C. RAILWAY, KAZIPET

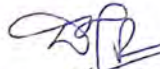
Phone- 551222

G. V. S. Srinivasan

ID	Longitude	Latitude	Easting	Northing	Division	Sno
278	79.52692960	19.51742045	345431.686	2158744.431	Kagaznagar	
279	79.52625270	19.51804878	345361.245	2158814.587	Kagaznagar	
280	79.52558941	19.51869394	345292.249	2158886.593	Kagaznagar	
281	79.52499754	19.51939486	345230.802	2158964.707	Kagaznagar	
282	79.52438737	19.52009028	345167.429	2159042.229	Kagaznagar	
283	79.52371503	19.52074312	345097.492	2159115.095	Kagaznagar	
284	79.52299977	19.52135053	345023.008	2159182.971	Kagaznagar	
285	79.52226574	19.52193060	344946.529	2159247.840	Kagaznagar	
286	79.52142985	19.52241043	344859.265	2159301.705	Kagaznagar	
287	79.52053225	19.52276442	344765.405	2159341.698	Kagaznagar	
288	79.51964596	19.52309834	344672.713	2159379.461	Kagaznagar	
289	79.51873071	19.52336583	344576.918	2159409.897	Kagaznagar	
290	79.51779485	19.52355983	344478.892	2159432.219	Kagaznagar	
291	79.51729620	19.52362117	344426.621	2159439.460	Kagaznagar	
292	79.51737240	19.52370593	344434.698	2159448.772	Kagaznagar	
293	79.51780049	19.52365686	344479.576	2159442.953	Kagaznagar	

Bhawan  
SSE/DRG

G.M  
SSE/MC/SK22

  
 Dy. Chief Engineer (Plan-1)  
 S.C. RAILWAY, KAGAZNAGAR



**Year-wise detailed Abstract of CA scheme for Double the Degraded Forest Land to an extent 37.00 Ha in compt. no 501 of Chandraaly F, Rebbena Range of Asifabad Division in lieu of permission of 24.7539 Ha of forest land in Asifabad, Bellampally and Kaghanagar Divisions for laying of new third BG railway line along the existing tracks within the railway boundary between Makhudi and Rechini road railway stations in Komarambheem- Asifabad and Mancherial Districts in favour of South Central Railway Secunderabad of Asifabad Division.**

Sl. No	Item of Work	2026 - 27			2027 - 28			2028 - 29			2029 - 30			2030 - 31			2031-32			2032-33			Grand Total		
		Phy	Unit Cost (Rs.)	Fin (Rs.in Lakhs)	Phy	Unit Cost (Rs.)	Fin (Rs.in Lakhs)	Phy	Unit Cost (Rs.)	Fin (Rs.in Lakhs)	Phy	Unit Cost (Rs.)	Fin (Rs.in Lakhs)	Phy	Unit Cost (Rs.)	Fin (Rs.in Lakhs)	Phy	Unit Cost (Rs.)	Fin (Rs.in Lakhs)	Phy	Unit Cost (Rs.)	Fin (Rs.in Lakhs)	Phy	Unit Cost (Rs.)	Fin (Rs.in Lakhs)
1	2	26	27	28	29	30	31	32	33	34	35	36	37	38	39	40	41	42	43	44	45	46	47	48	49
	<b>Twice the extent of forest land proposed for diversion over Degraded Forest Land to an extent 37.00 Ha</b>																								
<b>A</b>	<b>Raising of Plants in Nurseries &amp; their Maintenance</b>																								
1	Raising of Primary beds - cost for 100000 plants																							95000	0.254
2	Raising of Bag Plants of 5"x9" - Cost 100000 plants																							95000	5.301
3	Maintenance of Bag Plants of 5"x9" - Cost for 100000 plants																							95000	1.698
4	Conversion of bag plants from 5"x9" to 8"x12" - Cost 100000 plants																							95000	14.884
5	Maintenance of Bag Plants of 8"x12" - Cost for 100000 plants																							95000	3.936
	<b>Sub Total:</b>			<b>0.000</b>		<b>0.000</b>		<b>0.000</b>		<b>0.000</b>		<b>0.000</b>		<b>0.000</b>		<b>0.000</b>		<b>0.000</b>		<b>0.000</b>		<b>0.000</b>		<b>26.072</b>	
<b>B</b>	<b>Nursery and other Infrastructure</b>																								
	<b>At Rebbena Nursery</b>																								
6	Borewell & Motor																							1	3.500
7	Construction of sumps / RCC Over Head Tank																							1	7.260
8	Pumphouse cum shed																							1	5.000
9	Permanent primary beds (10MX1M)																							50	5.000
10	Compound wall to Nursery																							300	27.345
11	Running charges & Electricity charges for nurseries																							2	2.000
12	Central water system HDPE Pipeline																							2	2.000
	<b>Sub Total:</b>			<b>0.000</b>		<b>0.000</b>		<b>0.000</b>		<b>0.000</b>		<b>0.000</b>		<b>0.000</b>		<b>0.000</b>		<b>0.000</b>		<b>0.000</b>		<b>0.000</b>		<b>52.105</b>	
<b>C</b>	<b>Planting activities (SMM) - 25 Ha</b>																								
13	Advance Operations																							25	10.660
14	Raising of Plantation																							25	49.471
15	1st Year Maintenance																							25	16.022
16	2nd Year Maintenance																							25	9.702
17	3rd Year Maintenance																							25	8.062
18	4th Year Maintenance	0.00	39021.93	0.00000																				25	8.869
19	5th Year Maintenance	25.00	18554.95	4.639	0.00	20410.44	0.00000																	25	4.639
20	6th Year Maintenance				25.00	19464.91	4.866	0.00	21411.40	0.00000														25	4.866
21	7th Year Maintenance							25.00	5146.04	1.287	0.00	5660.64	0.00000											25	1.287
22	8th Year Maintenance										25.00	4516.54	1.129	0.00	4968.19	0.00000								25	1.129
23	9th Year Maintenance													25.00	6226.70	1.557	0.00	6849.38	0.00000					25	1.557
24	10th Year Maintenance																25.00	5465.01	1.366	125.00	6011.52	7.514	150	8.881	
	<b>Sub Total:</b>			<b>4.639</b>		<b>4.866</b>		<b>1.287</b>		<b>1.129</b>		<b>1.557</b>		<b>1.366</b>		<b>7.514</b>		<b>125.145</b>							
<b>D</b>	<b>Forest Protection</b>																								
25	Construction of boundary pillars																							100.00	12.705
26	Digging of CPT																							3.000	6.080
27	Bund Planting ( Raising)																							3.000	1.406
	<b>Sub Total:</b>			<b>0.000</b>		<b>0.000</b>		<b>0.000</b>		<b>0.000</b>		<b>0.000</b>		<b>0.000</b>		<b>0.000</b>		<b>0.000</b>		<b>0.000</b>		<b>0.000</b>		<b>20.191</b>	
	<b>Total of DFL</b>			<b>4.639</b>		<b>4.866</b>		<b>1.287</b>		<b>1.129</b>		<b>1.557</b>		<b>1.366</b>		<b>7.514</b>		<b>125.145</b>							
<b>E</b>	<b>Administrative Cost - 10% over core activities</b>			<b>0.4639</b>		<b>0.4866</b>		<b>0.1287</b>		<b>0.1129</b>		<b>0.1557</b>		<b>0.1366</b>		<b>0.7514</b>		<b>17.141</b>							
	<b>Grand Total ( DFL+ Admn cost)</b>			<b>5.103</b>		<b>5.353</b>		<b>1.415</b>		<b>1.242</b>		<b>1.712</b>		<b>1.503</b>		<b>8.266</b>		<b>240.654</b>							

*R. Souha*  
PCCF (FCA)

Year-wise detailed Abstract of CA scheme for Double the Degraded Forest Land to an extent 25.00 Ha in Compt. no 152 of Kadamba RF of Penchikalapet Range in Kagaznagar Division in lieu of permission of 24.7539 Ha of forest land in Asifabad, Bellampally and Kaghanagar Divisions for laying of new third BG railway line along the existing tracks within the railway boundary between Makhudi and Rechini road railway stations in Komarambheem- Asifabad and Mancherial Districts in favour of South Central Railway Secunderabad of Kaghaznagar Division.

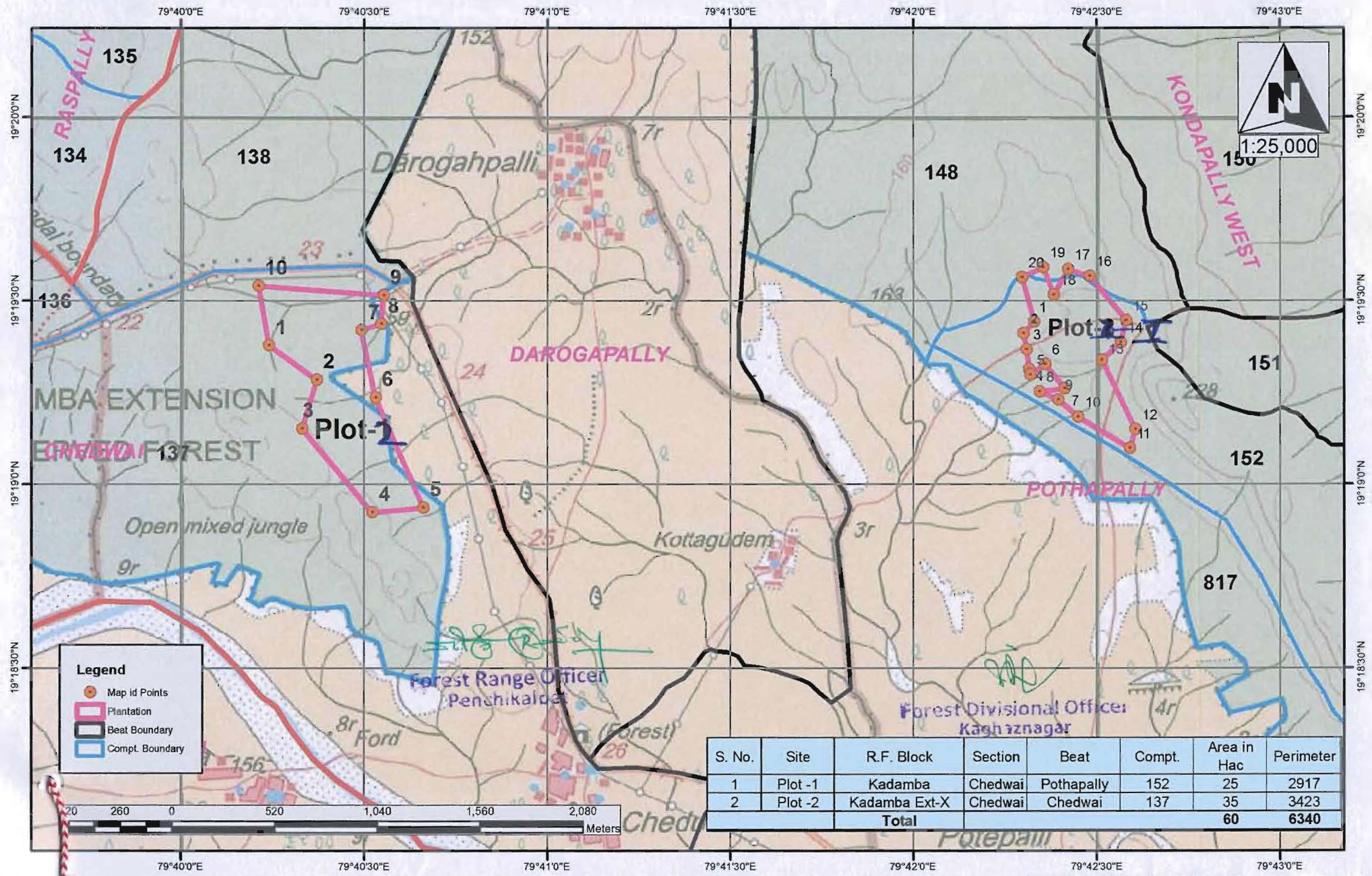
Sl. No	Item of Work	Phy	Unit Cost 2018-19 (Rs.)	2019 - 20			2020 - 21			2021 - 22			2022 - 23			2023 - 24			2024 - 25			2025 - 26		
				Phy	Unit Cost (Rs.)	Fin (Rs.in Lakhs)	Phy	Unit Cost (Rs.)	Fin (Rs.in Lakhs)	Phy	Unit Cost (Rs.)	Fin (Rs.in Lakhs)	Phy	Unit Cost (Rs.)	Fin (Rs.in Lakhs)	Phy	Unit Cost (Rs.)	Fin (Rs.in Lakhs)	Phy	Unit Cost (Rs.)	Fin (Rs.in Lakhs)	Phy	Unit Cost (Rs.)	Fin (Rs.in Lakhs)
				5	6	7	8	9	10	11	12	13	14	15	16	17	18	19	20	21	22	23	24	25
<b>A</b>	<b>DEGRADED FOREST LAND (DFL) (25 Ha)</b>																							
I	<b>Raising of Plants in Nurseries &amp; their Maintenance</b>																							
1	Raising of Primary beds - cost for 100000 plants	Plant	0.238	60000	0.262	0.157	15000	0.288	0.043															
2	Raising of Bag Plants of 5"x9" - Cost 100000 plants	Plant	4.968	60000	5.465	3.279	15000	6.011	0.902															
3	Maintenance of Bag Plants of 5"x9" - Cost for 100000 plants	Plant	1.447		1.59122		60000	1.750	1.050	15000	1.925	0.289												
4	Conversion of bag plants from 5"x9" to 8"x12" - Cost 100000 plants	Plant	12.681		13.94941		60000	15.344	9.207	15000	16.879	2.532												
5	Maintenance of Bag Plants of 8"x12" - Cost for 100000 plants	Plant	3.048		3.35325			3.68858		60000	4.057	2.434	15000	4.463	0.669									
	<b>Sub Total:</b>					<b>3.436</b>			<b>11.202</b>						<b>0.669</b>			<b>0.000</b>			<b>0.000</b>		<b>0.000</b>	
II	<b>Nursery and other Infrastructure</b>																							
6	Borewell & Motor	No	350000	1	350000	3.500																		
7	Over head tanks	No	150000	1	150000	1.500																		
8	Central water system HDPE Pipeline	No	200000	3	200000	6.000																		
9	Seed storage & watchman shed	No	400000	1	400000	4.000																		
10	Compound wall to Nursery	RMT	8019	175	8821	15.437																		
11	Sprinkler system	No	150000	1	150000	1.500																		
12	Permanent primary beds (10MX1M)	No	10000	75	10000	7.500																		
	<b>Sub Total:</b>					<b>39.437</b>			<b>0.000</b>			<b>0.000</b>			<b>0.000</b>			<b>0.000</b>			<b>0.000</b>		<b>0.000</b>	
III	<b>Planting activities (SMM) - 25 Ha</b>																							
13	Advance Operations	Ha	35241		38764.66		25.00	42641.13	10.660				25.00	197885.4	49.471									
14	Raising of Plantation	Ha	148674		163541.69								25.00	64089.90	16.022									
15	1st Year Maintenance	Ha	43774		48151.69											25.00	38808.46	9.702						
16	2nd Year Maintenance	Ha	24097		26506.70														25.00	32249.53	8.062			
17	3rd Year Maintenance	Ha	18204		20024.42																25.00	35474.49	8.869	
18	4th Year Maintenance	Ha	18204		20024.42																			
19	5th Year Maintenance	Ha	8656		9521.62																			
20	6th Year Maintenance	Ha	8255		9080.52																			
21	7th Year Maintenance	Ha	1984		2182.42																			
22	8th Year Maintenance	Ha	1583		1741.32																			
23	9th Year Maintenance	Ha	1984		2182.42																			
24	10th Year Maintenance	Ha	1583		1741.32																			
	<b>Sub Total:</b>					<b>0.000</b>			<b>10.660</b>			<b>49.471</b>			<b>16.022</b>			<b>9.702</b>			<b>8.062</b>		<b>8.869</b>	
IV	<b>Forest Protection</b>																							
25	Construction of boundary pillars	No's	10000	0	11000	0.000	200	12100	24.200	0	13310	0.000												
26	Digging of CPT	km	167500	0	184250	0.000	3.200	202675	6.486	0	222943	0.000												
27	Bund Planting	km	25000	0	27500	0.000	0	30250	0.000	3.200	33275	1.065												
	<b>Sub Total:</b>					<b>0.000</b>			<b>30.686</b>			<b>1.065</b>			<b>0.000</b>			<b>0.000</b>			<b>0.000</b>		<b>0.000</b>	
	<b>Total of DFL</b>					<b>42.873</b>			<b>52.548</b>			<b>55.791</b>			<b>16.692</b>			<b>9.702</b>			<b>8.062</b>		<b>8.869</b>	
V	<b>Administrative Cost - 10% over core activities</b>					<b>0.3436</b>			<b>5.2548</b>			<b>5.5791</b>			<b>1.6692</b>			<b>0.9702</b>			<b>0.8062</b>		<b>0.8869</b>	
	<b>Grand Total ( DFL+ Admn cost)</b>					<b>43.216</b>			<b>57.802</b>			<b>61.370</b>			<b>18.361</b>			<b>10.672</b>			<b>8.869</b>		<b>9.755</b>	

Year-wise detailed Abstract of CA scheme for Double the Degraded Forest Land to an extent 25,00 Ha in Complr. no 157 of Kadamba RF of Panchikhalpet Range in Kagaznagar Division in lieu of permission of 24.7539 Ha of forest land in Asifabad, Bellampally and Kaghanagar Divisions for laying of new third BG railway line along the existing tracks within the railway boundary between Makhudi and Redhni road railway stations in Konarambhem- Asifabad and Mancheril Districts in Favour of South Central Railway Secunderabad of Kaghanagar Division.

Sl. No	Item of Work	2026 - 27		2027 - 28		2028 - 29		2029 - 30		2030 - 31		2031-32		Grand Total									
		Phy	Unit Cost (Rs.)	Fin (Rs.in Lakhs)	Phy	Unit Cost (Rs.)	Fin (Rs.in Lakhs)	Phy	Unit Cost (Rs.)	Fin (Rs.in Lakhs)	Phy	Unit Cost (Rs.)	Fin (Rs.in Lakhs)	Phy	Unit Cost (Rs.)	Fin (Rs.in Lakhs)							
1	DEGRADED FOREST LAND (DFL) (25 Ha)	26	27	28	29	30	31	32	33	34	35	36	37	38	39	40	41	42	43	44	45	46	
A	<b>Raising of Plants in Nurseries &amp; their Maintenance</b>																						
1	Raising of Primary beds - cost for 100000 plants																						
2	Raising of Bag Plants of 5'x9" - Cost 100000 plants																						
3	Maintenance of Bag Plants of 5'x9" - Cost for 100000 plants																						
4	Conversion of bag plants from 5'x9" to 8'x12" - Cost 100000 plants																						
5	Maintenance of Bag Plants of 8'x12" - Cost for 100000 plants																						
	Sub Total:			0.000																			
6	<b>Nursery and other Infrastructure</b>																						
6	Borewell & Motor																						
7	Over head tanks																						
8	Central water system HDPE Pipeline																						
9	Seed storage & watchman shed																						
10	Compound wall to Nursery																						
11	Sprinkler system																						
12	Permanent primary beds (10MX1M)																						
	Sub Total:			0.000																			
III	<b>Planting activities (SMM) - 25 Ha</b>																						
13	Advance Operations																						
14	Raising of Plantation																						
15	1st Year Maintenance																						
16	2nd Year Maintenance																						
17	3rd Year Maintenance																						
18	4th Year Maintenance																						
19	5th Year Maintenance	25.00	18554.95	4.639																			
20	6th Year Maintenance				25.00	19464.91	4.866																
21	7th Year Maintenance				25.00	5146.04	1.287																
22	8th Year Maintenance							25.00	1.287														
23	9th Year Maintenance									25.00	4516.54	1.129											
24	10th Year Maintenance												25.00	6226.70	1.557								
	Sub Total:			4.639		4.866		1.287			1.129		1.557		1.366		25.00	5465.01	1.366	25	25	25	25
IV	<b>Forest Protection</b>																						
25	Construction of boundary pillars																				200	24.200	
26	Digging of CPT																				3.200	6.486	
27	Bund Planting			0.000		0.000		0.000		0.000					0.000						3.200	1.065	
	Sub Total:			4.639		4.866		1.287		1.129		1.557		1.366	1.366		25.00	5465.01	1.366	25	25	25	25
	<b>Total of DFL</b>			0.000		0.000		0.000		0.000		0.000		0.000	0.000								
	Sub Total:			4.639		4.866		1.287		1.129		1.557		1.366	1.366		25.00	5465.01	1.366	25	25	25	25
V	Administrative Cost - 10% over core activities			0.4639		0.4866		0.1287		0.1129		0.1557		0.1366	0.1366								
	Sub Total:			0.4639		0.4866		0.1287		0.1129		0.1557		0.1366	0.1366								
	<b>Grand Total ( DFL+ Admn cost)</b>			5.103		5.353		1.415		1.242		1.712		1.503	1.503								

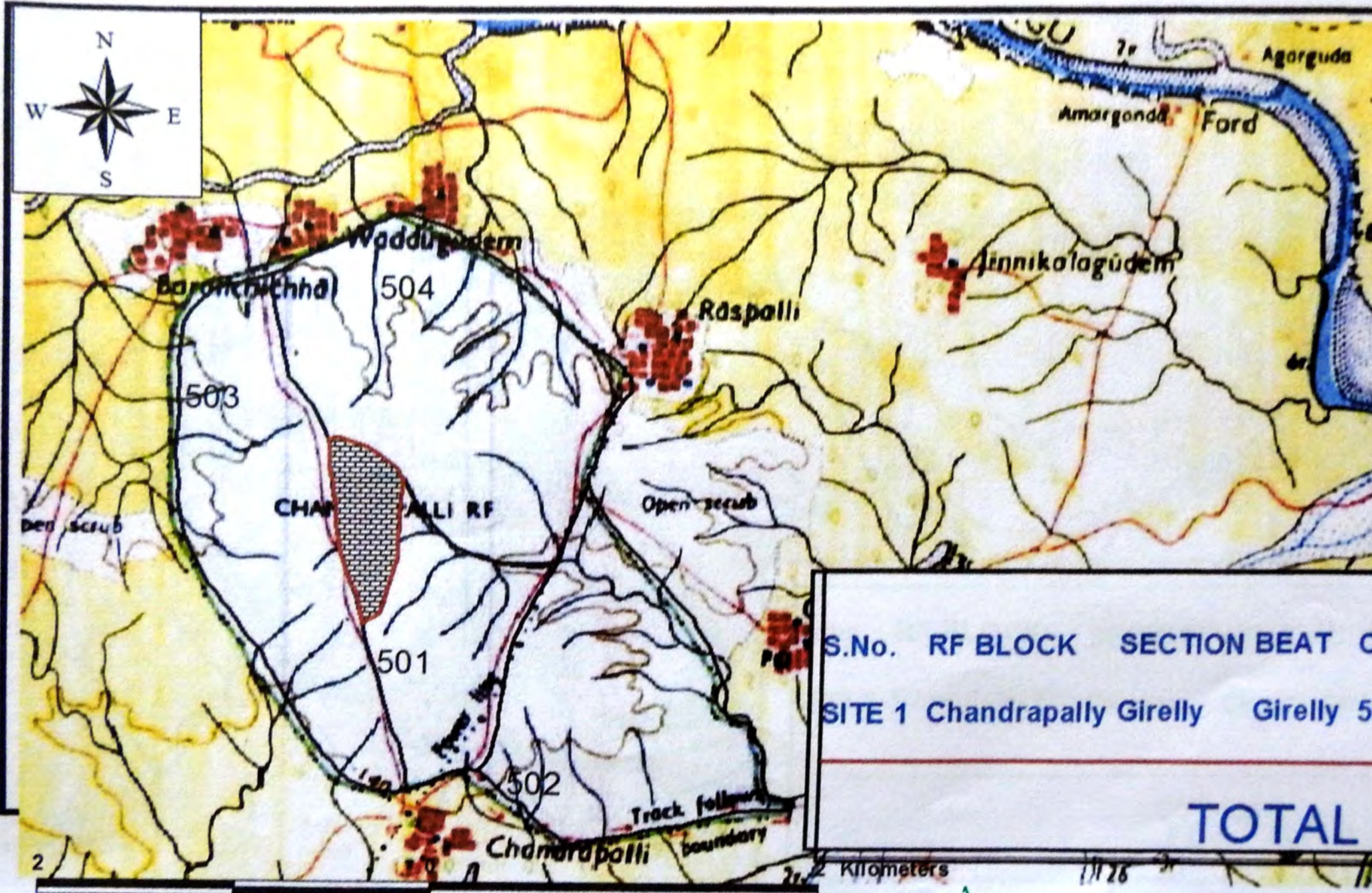
R. SANKAR  
PCCF (FCA)

**Map showing the Proposed Development of Double Degraded Forest Land of Penchikalpet Range of Kaghaznagar Division for the Diversion of Forest Land of 168.430 Hac for laying of New Third BG Railway along the existing tracks within the Railway boundary between Makidi and Rechini Road Railway Stations in Kaghaznagar Division**



S. No.	Site	R.F. Block	Section	Beat	Compt.	Area in Hac	Perimeter
1	Plot -1	Kadamba	Chedwai	Pothapally	152	25	2917
2	Plot -2	Kadamba Ext-X	Chedwai	Chedwai	137	35	3423
<b>Total</b>						<b>60</b>	<b>6340</b>

Map showing the Proposed Development of Double Degraded Forest area of 233 Ha. in Compt.No.501,502,503,504 of RF Chandrapally of Beat Girelly, Section Girelly in Rebbena Range of Asifabad Division for the Dverted Forest land of 189.6808 Ha. for Laying of new third BG Railway line along the existing tracks within the railway boundary between Makhudi and Rechini Road railway stations of in KB Asifabad and Mancherial Dists.



COMPT.NO.501	
LAT LONG	
19.21483	79.78117
19.21262	79.78112
19.20999	79.78038
19.20972	79.77848
19.20955	79.77823
19.21110	79.77750
19.21324	79.77744
19.21429	79.77677
19.21905	79.77600
19.21899	79.77700
19.21765	79.77961

S.No.	RF BLOCK	SECTION BEAT	COMPT.	AREA IN PM IN HA.	KM
SITE 1	Chandrapally	Girelly	Girelly 501	37	2.70
<b>TOTAL :</b>				<b>37</b>	<b>2.70</b>

*[Signature]*  
**Forest Range Officer**  
**REBBENA**

*[Signature]*  
**Forest Divisional Officer**  
**Asifabad**