

By E-Mail

No.F.6-1192/FC/For/2019/ 250-251
Government of Tripura
Office of the Principal Chief Conservator of Forests
Tripura: Agartala

Dated, Agartala, the 10th June, 2022

To
The Deputy Director General Forests (Central),
Ministry of Environment Forests & Climate Change
Integrated Regional Office,
Law-U-Sib, Lumbatngen
Near M.T.C. Workshop
Shillong 793021

Sub: - Proposal for diversion of 6.131 ha of forest land for exploration of hydrocarbon / natural gas through drilling , DSA, waste pit and approach road at location GOAN of Mouja- Sakshin Sonaichari & Tekka RF under South District- reg.

Ref: - Letter No.3-TR B 062/2021-SHI/1911-12 dated 22.11.21 of MoEF & CC, Shillong

Madam,

I am to refer to the above and to enclose herewith an alternative CA site details including soft copy of.shp/ .kml file, Site Suitability certificate, geo-ref map, topo map & CA scheme etc.

In view of the above, I would request you to kindly arrange to convey the Stage-I approval at the earliest.

Enclo:- As stated

Yours faithfully,


[V.G. Jenner]

Addl. Principal Chief Conservator of Forests &
Nodal Officer, FCA

CC:-

The Nodal Officer, In-Charge, HR-ER ONGC, Tripura Asset, Badharghat Complex, Tripura-799001.

Certificate regarding suitability of area identified for Compensatory Afforestation
and from management point of view

Certified that the lands so identified for compensatory afforestation related to this proposal is selected under Asst.WLW Abhoya Wildlife Range under Trishna Wildlife Sanctuary is a degraded forest land and suitable for raising compensatory afforestation and also from management point view. *Density of vegetation approx 10-1. (Canopy level)*

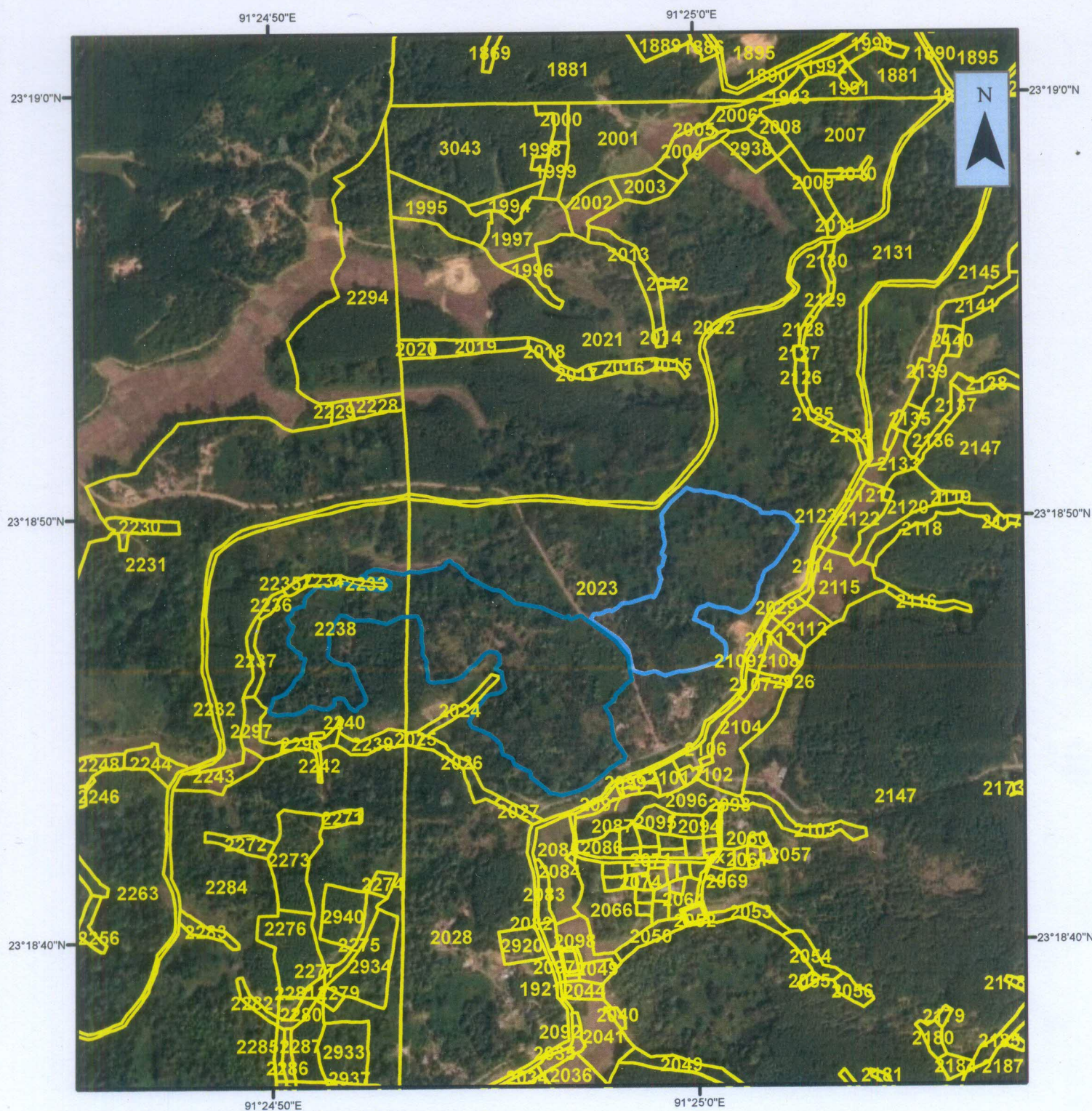
Name of Range	Name of Project	Name of SDFO/ WLW	Mouja	Khatian No	C.S. Plot No.	Area
Abhoya	Exploration of Hydrocarbon/ Natural Gas through drilling, DSA, West Pit and approach road at location GOAN at mouja Dakshin Sonaichari RF. under Bagafa Forest Sub-Division, South Tripura.	WLW Trishna WLS	Kashari RF	2/4, 2/82	2238, 2023,	12.262 ha



[Chaman Lal, IFS]
District Forest officer,
South, District, Belonia

District Forest Officer,
South District.

**Map showing Proposed CA Land against Diversion of 6.131 Ha of Forest Land
for exploration of hydrocarbon /natural gas through drilling and approach road at location GOAN
Under DFO South**



TOTAL AREA CALCULATED IN GIS DOMAIN: 12.262 Ha

Total Area Calculated in GIS Domain for Plot 1: 8.142 Ha

Total Area Calculated in GIS Domain for Plot 2: 4.120 Ha

*** The Findings are given according to the CS Map Sheet provided by the DLRS and Geo-referred by the TSAC

***This may be further verified by physical verification with Revenue Department by joint verification at the time of part II

**PREPARED BY-
GIS LAB
TRIPURA FOREST DEPARTMENT**

Date: 02-06-2022

REPORT OF .SHP FILE:

**CS PLOT : 2238, 2023
KHATIAN : 2/4, 2/82
MOUJA: Kasari RF
LAND STATUS: RF**

**District Forest Officer,
South District.**

Legend

- CA Land Plot 1
- CA Land Plot 2
- Mouja: Kasari RF

0 0.1 0.2 0.4 0.6 0.8 Kilometers

Statement of 12.262 ha. forest land selected for CA plantation in connection with the 6.131 ha. Forest land proposed for diversion for Drilling site, Waste pit, DSA, location at "GOAN" under DFO South Tripura.

Name of Sub-Division	Name of Mouja	RS Kh. No	RS plot No.	Area in Ha.	Status of land	Forest management Block	Compartment No
Belonia	Kashari RF	2/4	2238	12.262	RF	NIL	NIL
	Kashari RF	2/82	2023				

Prepared by

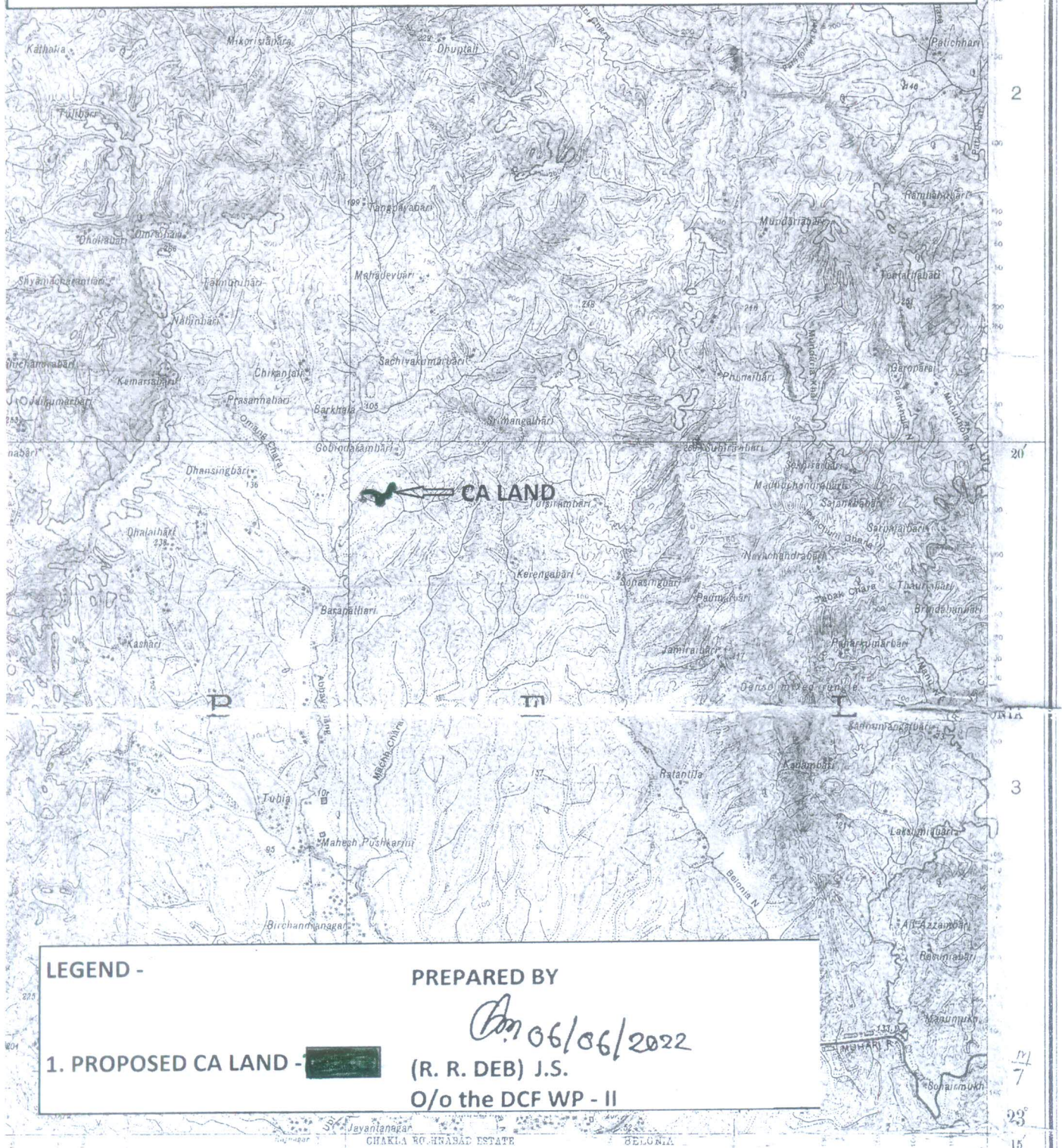
Ran. 07/06/2022

Rakshit Ranjan Deb
Jr. Surveyor,
O/o the DCF WP Divn No II.

2/492

TOPO MAP SHOWING THE 10.48 HA. CA LAND SELECTED FOR CA PLANTATION AGAINST
DIVERSION OF 5.24 HA. OF FOREST LAND FOR EXPLORATION OF HYDROCARBON/NATURAL
GAS THROUGH DRILLING AND APPROACH ROAD AT LOCATION CALLED "GOAN" UNDER
DFO, SOUTH TRIPURA.

TOPO SHEET NO. 79M/7(P)
SCALE - 1 : 50000



LEGEND -

1. PROPOSED CA LAND -

PREPARED BY

R.R. Deb
06/06/2022

(R. R. DEB) J.S.


O/o the DCF WP - II


Estimate for raising 12.262 ha Forest Land selected for CA plantation at Mouja:- Kashari RF Beat of Manipathar under Asst. Wildlife Warden Abhiya Wildlife range under Trishna Wildlife Sanctuary, Joychandpur, South Tripura against the diversion of 6.121 ha of forest land for exploration of Hydrocarbon /Natural Gas through drilling, waste-pit and DAS of location GOAN of Mouja – Dakshin Sonaichari & Tekka RF under District Forest Officer, South Tripura

Estimate are given below:-

1 st Year Maintenance				
SL No	Item of works	Time of works	No.DL s/ha	Amounts (in Rs)
1	Pre-survey by clearing jungle 1.5 m wide strip by using GPS instrument. Track polygon (raw data) is to be submitted within 5 days after completion of survey	Feb-March		(included in 10%)
2	Site preparation including cutting of jungle slush to the round disposal of debris etc.	Jan-Fab	18	3816
3	Stacking at spacing 2 m x 2 m (2500 plants) with sticks of 1 m long and 15 cm wide including collection of sticks etc to be done along the contour in slopes and in East West direction in plains	Feb-March	10	2120
4	Digging of pits 30 cm x 30 cm x 30 cm size for misc fast growing species at 2m x 2 m spacing	Feb-March	68	14416
5	Re-filling of pits after removal of foreign materials breaking of clods and planting of seedling after removal of seedling pots, carrying of seedlings up to plantation site, including preparation of thali for water conservation etc.	April-may	79	16748
6	Re-Survey using GPS			
7	First weeding including base cleaning in thali at a radius of 0.5 m by scraping with spade and cutting of weeds in between the lines flush to the ground level including vacancy filling with required plant sp including digging of pits, refilling & planting including carrying of seedlings.	June-July	22	4664
8	Second Weeding including base cleaning in thali at a radius of 0.5 m by scaraping with spade and cutting of weeds in between the lines flush to the ground level	Aug-Sep	18	3816
9	Winter cleaning by cutting of weeds and climber making of fire line 4m wide & diagonal inspection path 1 m wide by scraping with spade and maintenance of the same throughout the dry season	Dec-January	10	2120
10	Engagement of a watch and wards responsible for maintenance of fencing, cattle watching etc. His continuation will be based on survival percentage of seedling.	April-March	1 for 365 days	7738
11	Cost of planting materials @ Rs. 15/- per polybag for 3000 nos polybag (including vacancy filling)			45000
12	Cost of permanent fencing including application of biofertilizer etc.	Lumpsum	per ha	65000
Total				165438
Cost of pre-survey, carrying cost, singbord cost, monitoring and evaluation will be 10% of the total expenditure for 1ha				16544
Sub-Total for 1st year				181982
Anticipatory increase total X cost increment factor(1)				181982
2nd Year Maintenance				
1	First weeding including base cleaning in thali at a radius of 0.5 m by scraping with spade and cutting of weeds in between the lines flush to the ground level including vacancy filling with required plant sp including digging of pits, refilling & planting including carrying of seedlings.	June-July	22	4664
2	Second weeding including base in thali at a radius of 0.5 m by scraping with spade and cutting of weeds in between the lines flush to the ground level	Aug-Sep	18	3816
3	Winter cleaning including base in thali at a radius of 0.5 m by scrping with spade & cutting of weeds in between the lines flush the ground including making of fire line 4 m wide & diagonal inspection path 1 m wide by scaraping spade and maintenance of the same throughout the dry season	Dec-January	10	2120
4	Engagement of a watch and wards respopnsible for maintenance of fencing , cattle watching etc. His continuation will be based on survival percentage of seedling. Watch and ward is 1 no. for min 10 ha (contiguous or discrete) patch	April-March	1 for 365 days	7738
5	cost of seedling of 500 @ Rs. 15/- per polybag including transportation and application of biofertilizer etc.			12500
Total				30838
For monitoring and evaluation, Maintenance of fencing 10% of the entire cost of plantation per ha				3084
Sub-Total				33922
Anticipatory increase total X cost increment factor(1.1)				37314

3rd year maintenance				
1	First weeding including base cleaning in thali at a radius of 0.5 m by scraping with spade and cutting of weeds in between the lines flush to the ground level including vacancy filling with required plant spp including digging of pits, refilling & planting including carry of seedlings.	June-July	20	4240
2	Second weeding including base in thali at a radius of 0.5 m by scraping with spade & cutting of weeds in between the lines flush the ground level	Aug-Sep	15	3180
3	Winter cleaning including base in thali at a radius of 0.5 m by scraping with spade & cutting of weeds in between the lines flush the ground including making of fire line 4 m wide & diagonal inspection path 1 m wide by scraping spade and maintenance of the same throughout the dry season	Dec-January	10	2120
4	Engagement of a watch and wards responsible for maintenance of fencing, cattle watching etc. His continuation will be based on survival percentage of seedling. Watch and ward is 1 no for min 10 ha (contiguous or discrete) patch.	April-March	1 for 365 days	7738
5	Application for biofertilizer etc. including labour cost etc.		LS	5000
Total				22278
For monitoring and evaluation, maintenance of fencing 10% of the entire cost of plantation per ha				2228
Sub-Total				24506
Anticipatory increase : Total X cost increment factor (1.21)				29652
4th year maintenance				
1	First weeding including base cleaning in thali at a radius of 0.5 m by scraping with spade and cutting of weeds in between the lines flush to the ground level	June-July	15	3180
2	Cultural operation by weeding and climber cutting including making diagonal inspection path 1 m wide by scraping with spade and maintenance of the same throughout the dry season including making of fire line 4 m wide by scraping with spade including maintenance of the same throughout the dry season	Dec-January	12	2544
Total				5724
Anticipatory increase : Total X Cost increment factor (1.331)				7619
5th year maintenance				
1	Cultural operation	Dec-January	12	2544
Anticipatory increase : Total X Cost increment factor (1.4641)				3725
6th year maintenance				
1	Cultural operation	Dec-January	12	2544
Anticipatory increase : Total X Cost increment factor (1.61051)				4097
7th year maintenance				
1	Cultural operation	Dec-January	12	2544
Anticipatory increase : Total X Cost increment factor (1.771561)				4507
8th year maintenance				
1	Cultural operation	Dec-January	12	2544
Anticipatory increase : Total X Cost increment factor (1.948717)				4958
9th year maintenance				
1	Cultural operation	Dec-January	12	2544
Anticipatory increase : Total X Cost increment factor (2.1435888)				5453
10th year maintenance				
1	Cultural operation	Dec-January	12	2544
Anticipatory increase : Total X Cost increment factor (2.3579476)				5999
Sub-Total				285305
Cost of 10% for central Campa Fund				28530
Grand Total				313835
Grand Total Rs.313835/- per ha X 12.262 ha =38,48,247/-(Rupees thirty eight lakh forty eight thousand two hundred forty seven) only.				


SHRI V.G. JENNER, IFS
 Addt. Principal Chief Conservator Forests),
 & Nodal Officer, FCA,
 Forest Dept. Govt. of Tripura.


 District Forest Officer
 South Tripura District,
District Forest Officer,
South District.

GPS Coordinates of the Proposed CA Land against Diversion of 6.131 Ha of Forest Land for exploration of hydrocarbon /natural gas through drilling and approach road at location GOAN under DFO South

- **CA Land Plot 1:**

Sl.No	Latitude	Longitude
1	23.321161	91.422972
2	23.321147	91.422932
3	23.321138	91.422923
4	23.321103	91.422874
5	23.321026	91.422815
6	23.321015	91.422806
7	23.320963	91.422755
8	23.320938	91.422706
9	23.320925	91.422698
10	23.320875	91.422644
11	23.320811	91.422593
12	23.320774	91.422509
13	23.320772	91.422491
14	23.320759	91.42246
15	23.320755	91.422427
16	23.320738	91.422357
17	23.320731	91.422238
18	23.320727	91.422216
19	23.320735	91.422137
20	23.320761	91.422109
21	23.320844	91.422109
22	23.320851	91.422105
23	23.320925	91.422094
24	23.320979	91.42208
25	23.321008	91.422091
26	23.321053	91.422081
27	23.321129	91.422033
28	23.321163	91.422033
29	23.321219	91.422043
30	23.321312	91.422024
31	23.321472	91.422026
32	23.321588	91.422005
33	23.32166	91.421963
34	23.321651	91.421754
35	23.321556	91.421535
36	23.321611	91.421287
37	23.321604	91.421269
38	23.321604	91.421167
39	23.321608	91.421087
40	23.321637	91.421023
41	23.321674	91.42097
42	23.321677	91.420894

43	23.32163	91.420861
44	23.321575	91.420816
45	23.321553	91.420806
46	23.321464	91.420777
47	23.321424	91.420741
48	23.321293	91.420738
49	23.321275	91.420738
50	23.321155	91.420724
51	23.321107	91.420722
52	23.321043	91.4208
53	23.32104	91.420806
54	23.320999	91.420895
55	23.320992	91.420926
56	23.320993	91.420998
57	23.320933	91.421073
58	23.320763	91.421131
59	23.320682	91.421175
60	23.320535	91.421242
61	23.320477	91.421244
62	23.320434	91.421218
63	23.320398	91.421153
64	23.320378	91.421131
65	23.320356	91.421124
66	23.320343	91.421112
67	23.320339	91.421091
68	23.320382	91.42102
69	23.320506	91.420938
70	23.320518	91.420886
71	23.320518	91.420885
72	23.320509	91.420818
73	23.320501	91.420812
74	23.320499	91.420807
75	23.320419	91.420803
76	23.320396	91.420766
77	23.32036	91.420711
78	23.320367	91.42061
79	23.320381	91.420583
80	23.320407	91.420471
81	23.320392	91.420445
82	23.32035	91.420385
83	23.320323	91.420345
84	23.32029	91.420238
85	23.3203	91.420173
86	23.320295	91.420086
87	23.320288	91.420038
88	23.320283	91.420011
89	23.320313	91.419917

90	23.320317	91.419915
91	23.320347	91.4199
92	23.320413	91.419931
93	23.320453	91.419943
94	23.320514	91.419958
95	23.320518	91.419965
96	23.320542	91.420039
97	23.32058	91.420121
98	23.320599	91.420139
99	23.3206	91.42014
100	23.320615	91.420155
101	23.320684	91.420218
102	23.320736	91.420244
103	23.320773	91.420258
104	23.320799	91.420295
105	23.320804	91.420304
106	23.320834	91.420338
107	23.320863	91.420345
108	23.320892	91.420375
109	23.32094	91.420372
110	23.321078	91.420402
111	23.321083	91.420381
112	23.321083	91.42037
113	23.32109	91.420338
114	23.321127	91.420332
115	23.321148	91.420341
116	23.321185	91.420266
117	23.321213	91.42025
118	23.321267	91.42018
119	23.321327	91.42017
120	23.321376	91.420173
121	23.321457	91.420225
122	23.321529	91.420239
123	23.321558	91.420194
124	23.321645	91.420159
125	23.321682	91.420203
126	23.321703	91.420221
127	23.32173	91.420221
128	23.321761	91.420237
129	23.321775	91.420276
130	23.321784	91.420299
131	23.321799	91.420338
132	23.321806	91.420385
133	23.321811	91.420394
134	23.321911	91.420407
135	23.321952	91.420429
136	23.321963	91.420452

137	23.322077	91.420572
138	23.322059	91.420757
139	23.322053	91.420852
140	23.322113	91.420928
141	23.322121	91.420977
142	23.32205	91.421188
143	23.322026	91.42148
144	23.322044	91.421587
145	23.322115	91.421596
146	23.322166	91.421557
147	23.322178	91.421441
148	23.322193	91.421272
149	23.322212	91.421194
150	23.322232	91.421243
151	23.322273	91.421267
152	23.322309	91.42136
153	23.322312	91.421425
154	23.322292	91.421529
155	23.322267	91.421631
156	23.322253	91.42172
157	23.322241	91.421793
158	23.322261	91.421817
159	23.322282	91.42187
160	23.322266	91.421988
161	23.322295	91.422134
162	23.32232	91.422252
163	23.322326	91.42231
164	23.32237	91.422358
165	23.322387	91.42236
166	23.322403	91.422375
167	23.322426	91.422425
168	23.322423	91.422434
169	23.322382	91.422467
170	23.322364	91.422519
171	23.322341	91.422545
172	23.322296	91.422598
173	23.322276	91.422598
174	23.322213	91.422655
175	23.322161	91.422735
176	23.322145	91.422783
177	23.322095	91.422849
178	23.322016	91.423017
179	23.322013	91.423042
180	23.322017	91.423087
181	23.321984	91.42316
182	23.321945	91.423182
183	23.321907	91.423238

184	23.321836	91.423326
185	23.321766	91.423686
186	23.321626	91.423994
187	23.321634	91.424043
188	23.321644	91.42407
189	23.321645	91.42407
190	23.321604	91.42408
191	23.321607	91.424113
192	23.321648	91.424202
193	23.321652	91.42425
194	23.3216	91.424307
195	23.321425	91.424547
196	23.321299	91.424706
197	23.321079	91.424881
198	23.320861	91.424917
199	23.320744	91.424939
200	23.320726	91.4249
201	23.32071	91.424893
202	23.320686	91.424854
203	23.320646	91.424822
204	23.320603	91.424782
205	23.320554	91.42473
206	23.320544	91.424712
207	23.320485	91.424699
208	23.320437	91.424652
209	23.32038	91.424577
210	23.32037	91.42456
211	23.32024	91.424637
212	23.320189	91.424651
213	23.320023	91.424668
214	23.319909	91.424698
215	23.3199	91.4247
216	23.319776	91.424791
217	23.319746	91.424808
218	23.319684	91.424844
219	23.319632	91.424825
220	23.319612	91.424774
221	23.319506	91.424608
222	23.31945	91.424559
223	23.319284	91.424339
224	23.319209	91.424187
225	23.319154	91.423962
226	23.31917	91.42388
227	23.319171	91.42388
228	23.319185	91.423792
229	23.31922	91.423762
230	23.319317	91.423647

231	23.319404	91.423528
232	23.319434	91.423527
233	23.31946	91.42353
234	23.31949	91.423509
235	23.319495	91.423474
236	23.3195	91.423465
237	23.31954	91.423385
238	23.319556	91.423362
239	23.319595	91.4233
240	23.319655	91.423281
241	23.319707	91.423195
242	23.319723	91.423144
243	23.319803	91.42312
244	23.319849	91.423116
245	23.319894	91.423082
246	23.319925	91.423049
247	23.320007	91.422945
248	23.320023	91.422908
249	23.320054	91.422854
250	23.320107	91.422714
251	23.320177	91.422677
252	23.320203	91.422689
253	23.320299	91.422745
254	23.320386	91.422808
255	23.320516	91.422909
256	23.320551	91.422961
257	23.320574	91.423101
258	23.32064	91.423181
259	23.320737	91.42315
260	23.320832	91.423137
261	23.320861	91.423137
262	23.320915	91.423044
263	23.32094	91.423065
264	23.320956	91.423077
265	23.320977	91.4231
266	23.321018	91.423107
267	23.321099	91.423102
268	23.321146	91.423057
269	23.321161	91.422972


 District Forest Officer,
 South District.

- CA Land Plot 2:

Sl.No	Latitude	Longitude
1	23.323042	91.42536
2	23.323217	91.4255
3	23.323319	91.425619
4	23.323411	91.42572
5	23.323406	91.425725
6	23.323367	91.425828
7	23.323372	91.425911
8	23.323346	91.426003
9	23.323341	91.426113
10	23.323301	91.426215
11	23.32328	91.426308
12	23.323282	91.426331
13	23.323277	91.426385
14	23.323232	91.426465
15	23.323229	91.426499
16	23.32316	91.426606
17	23.32314	91.426658
18	23.323103	91.426728
19	23.323059	91.426756
20	23.323054	91.426785
21	23.323051	91.426888
22	23.323071	91.426905
23	23.323072	91.426915
24	23.323049	91.42707
25	23.323008	91.427136
26	23.322923	91.427216
27	23.322897	91.42725
28	23.322803	91.427248
29	23.322723	91.427197
30	23.322619	91.427122
31	23.322552	91.427086
32	23.322548	91.42708
33	23.3225	91.427037
34	23.32246	91.427021
35	23.32235	91.426936
36	23.322331	91.426909
37	23.322251	91.42679
38	23.322175	91.426761
39	23.322144	91.426753
40	23.322047	91.426701
41	23.321993	91.426697
42	23.321901	91.426677
43	23.321837	91.426646
44	23.32175	91.426576

45	23.321736	91.426565
46	23.321708	91.426528
47	23.32168	91.426453
48	23.3217	91.426371
49	23.321742	91.426267
50	23.321755	91.426125
51	23.321803	91.425995
52	23.321772	91.425965
53	23.321752	91.425894
54	23.321712	91.425849
55	23.321607	91.425813
56	23.321599	91.425816
57	23.321587	91.425805
58	23.321572	91.425846
59	23.321519	91.425947
60	23.321476	91.426055
61	23.321447	91.426055
62	23.321404	91.426056
63	23.321339	91.426139
64	23.321264	91.426228
65	23.321187	91.426247
66	23.321076	91.42624
67	23.321021	91.426209
68	23.321024	91.426198
69	23.321014	91.426168
70	23.320963	91.426086
71	23.320963	91.426034
72	23.320951	91.426008
73	23.320913	91.425892
74	23.320887	91.425823
75	23.320872	91.425729
76	23.320868	91.425698
77	23.320865	91.425663
78	23.320863	91.42565
79	23.320863	91.425593
80	23.32084	91.425525
81	23.320804	91.425391
82	23.320862	91.425266
83	23.320861	91.425235
84	23.320831	91.425107
85	23.320848	91.42504
86	23.320849	91.42503
87	23.320879	91.424954
88	23.320963	91.424936
89	23.321164	91.424891
90	23.32132	91.424758
91	23.32145	91.424573

92	23.321587	91.424378
93	23.3216	91.424371
94	23.321671	91.424417
95	23.321678	91.424506
96	23.321691	91.424556
97	23.321704	91.424565
98	23.321723	91.424623
99	23.321709	91.424671
100	23.321757	91.424743
101	23.321815	91.424806
102	23.321828	91.424924
103	23.321872	91.425067
104	23.321915	91.425211
105	23.321897	91.425246
106	23.321915	91.425263
107	23.321993	91.425303
108	23.322049	91.425325
109	23.32215	91.425355
110	23.32223	91.42533
111	23.322279	91.42532
112	23.3223	91.425324
113	23.322344	91.425376
114	23.322391	91.425385
115	23.32246	91.425404
116	23.322502	91.425365
117	23.322521	91.425365
118	23.322551	91.42538
119	23.322636	91.425405
120	23.322696	91.425403
121	23.322722	91.425392
122	23.322749	91.425387
123	23.322793	91.42539
124	23.322796	91.425391
125	23.322867	91.425361
126	23.322887	91.425367
127	23.322923	91.42538
128	23.323042	91.42536

**District Forest Officer,
South District.**