

**GOVERNMENT OF JAMMU AND KASHMIR**  
**OFFICE OF THE DIVISIONAL FOREST OFFICER**  
**BASOHLI FOREST DIVISION**  
**BASOHLI**  
 .....

Ph./Fax No. 01921-251050

Email: dfobasohli@gmail.com

The Conservator of Forests,  
 East Circle,  
 Jammu.

No. 339-40/B&L/22-23

Dated: 07/05/2022.

Sub: Proposal for diversion of forest land for construction of Towara to Dodla in Basohli Forest Division.

Ref: Proposal No. FP/JK/Road/149047/2021.

Sir,

On the subject & reference cited above, the reply of the EDS raised by Chief Conservator of Forests, Nodal Officer (FCA), Jammu in Proposal for diversion of forest land for construction of Towara to Dodla road is tabulated below:

S. No.	Essential Details Sought	Reply
1.	FRA certificate has been issued by the Deputy Commissioner Kathua and uploaded at Sr. No. 5 (additional documents), whereas under column K, the user agency cited that settlement of FRA under rest Right Act is not completed. The FRA certificate issued by Deputy Commissioner Kathua need to be uploaded by user agency under column K in Part-1	Uploaded on PARIVESH Portal by the User Agency.
2.	The Deputy Commissioner, Kathua has certified vide letter No. DCK/LA/2021 22/2055-59 dated 25-01-2022 (uploaded at Sr.No. 5 at additional documents) that state land (NFL) is available for Compensatory Afforestation, whereas CA plan on degraded forest land has been proposed. Justification required.	This office vide No. 4110-12 dated 24-12-2021 requested the user Agency for certificate from the revenue department regarding availability/ non availability of State land for compensatory afforestation. The o/o ADC- Basohli, submitted the revenue papers for the State land measuring 40 Kanal (02 ha) under Khasra no. 2944/2325/2147/963 situated at village Sandhar in lieu of Forest Land diverted for construction of road from Towara to Dodla, for execution compensatory afforestation. In order to prepare the compensatory afforestation scheme and in follow up to the laid down procedures as mandated under the Forest (Conservation) Act, 1980, this office directed the RFO-Basohli and BFO-Jandrola for collection of the digital field data for preparation of the KML file etc for uploading the same on Parivesh Govt. Portal. Whereas, RFO- Basohli vide No. 225/bsl, Dated 09-02-2022 has reported that during Joint Inspection (spot) with revenue officials (Patwari-PH, Sandhar), a GPS track of the said proposed area as per the onspot Nishandehi of revenue officials was taken and the track was collated with the KMZ file and digital boundary map of the Dodla Forest and it was established that the proposed land is forest land itself, which falls within Dodla forest of compartment 31/Bsl, Beat Nogana. Thus CA plan on degraded forest land has been proposed as per the recent guidelines meant for the link road projects.
3.	The Layout plan, Survey of India, Toposheet, Geo-referenced map of the proposed road need to be authenticated by the user agency.	Uploaded on PARIVESH Portal by the User Agency.
4.	The DFO Basohli has reported that 111 trees/poles involved in the road were damaged and at present there is no tree involved in the proposed road construction. However, the DFO has filled the detail of these trees under column 4(ii) in Part-II. Since the trees already removed, the detail of these trees/poles should be reflected in the damage report.	Needful has been done. Enclosed as annexure "A"

5.	SOI Toposheet and geo-referenced map of the CA site need to be authenticated by the DFO concerned.	Uploaded on PARIVESH Portal by this division.
6.	The detail of violation, action taken report need to be uploaded by DFO Basohli.	Needful has been done . Enclosed as annexure "B"
7.	The penal NPV need be assessed and incorporated in the proposal by the DFO <u>concerned as per the procedure laid down under clause 1.21 of chapter 1 of the Handbook (Page No 43).</u>	Needful has been done. Copy enclosed as Annexure-"C"
8.	Specific recommendation of DFO as per format of Part II. (page no 22-24 of Handbook of forest (Conservation) Act, 1980 and Forest conservation Rules, 2003 (Guidelines & Clarification), 2019 MOEF&CC; at SN. 16 of online part-II need to be uploaded by DFO Basohli	Uploaded on PARIVESH Portal by this division..

Yours faithfully,



(Ashwani Kumar) SFS  
Divisional Forest Officer  
Basohli Forest Division  
Basohli

Copy submitted to:

1. Chief Conservator of Forests, Nodal Officer (FCA), Jammu for favor of information and necessary action.




Divisional Forest Officer  
Basohli Forest Division  
Basohli

**Abstract of trees removed/damaged coming under construction of Road from Towara to Dodla by PMGSY Division  
Kathua In Basohli Forest Range of Basohli Forest Division.**

S.No	Species	Scientific Name	0-30 (in cm)	31-60 (in cm)	61-90 (in cm)	91-120 (in cm)	121-150 (in cm)	150 Onwards (in cm)	Total
1	Kainth	<i>Pyrus paschia</i>	9	18	12	1			40
2	Kamila	<i>Malotus philippensis</i>	6	9	11	1			27
3	Simbal	<i>Bombax ceiba</i>					1		1
4	Kakoa	<i>Flacourtia indica</i>	3	7	1				11
5	Khair	<i>Acacia catechu</i>			2				2
6	Sissoo	<i>Dalbergia sissoo</i>			3				3
7	Amaltas	<i>Cassia fistula</i>	5	6					11
8	Kambel	<i>Lannea coromandelica</i>			1	6	5	4	16
G.Total			23	40	30	8	6	4	111

  
Range Forest Officer  
Basohli Forest Range  
Basohli

  
Ashwani Kumar (SFS)  
Division Forest Officer  
Basohli Forest Division  
Basohli



**Detail of trees removed/damaged coming under construction of Road from Towara to Dodla  
by PMGSY Division Kathua in Basohli Forest Range of Basholi Forest Division**

S.No	Scientific Name	Species	Comptt.No	Girth (in cm)	Dia Girth-Class (in cm)	Remarks
1	<i>Pyrus paschia</i>	Kainth	32/Bsl	76.20	61-90	
2	<i>Pyrus paschia</i>	Kainth	32/Bsl	60.96	31-60	
3	<i>Pyrus paschia</i>	Kainth	32/Bsl	68.58	61-90	
4	<i>Pyrus paschia</i>	Kainth	32/Bsl	55.88	31-60	
5	<i>Malotus philippensis</i>	Kamila	32/Bsl	60.96	31-60	
6	<i>Pyrus paschia</i>	Kainth	32/Bsl	55.88	31-60	
7	<i>Cassia fistula</i>	Amaltas	32/Bsl	55.88	31-60	
8	<i>Malotus philippensis</i>	Kamila	32/Bsl	76.20	61-90	
9	<i>Dalbergia sissoo</i>	Sissoo	32/Bsl	76.20	61-90	
10	<i>Malotus philippensis</i>	Kamila	32/Bsl	81.28	61-90	
11	<i>Flacourtia indica</i>	Kakoa	32/Bsl	55.88	31-60	
12	<i>Malotus philippensis</i>	Kamila	32/Bsl	66.04	61-90	
13	<i>Pyrus paschia</i>	Kainth	32/Bsl	22.86	0-30	
14	<i>Pyrus paschia</i>	Kainth	32/Bsl	25.40	0-30	
15	<i>Pyrus paschia</i>	Kainth	32/Bsl	20.32	0-30	
16	<i>Pyrus paschia</i>	Kainth	32/Bsl	30.48	31-60	
17	<i>Pyrus paschia</i>	Kainth	32/Bsl	33.02	31-60	
18	<i>Pyrus paschia</i>	Kainth	32/Bsl	15.24	0-30	
19	<i>Pyrus paschia</i>	Kainth	32/Bsl	81.28	61-90	
20	<i>Pyrus paschia</i>	Kainth	32/Bsl	55.88	31-60	
21	<i>Lannea coromandelica</i>	Kambel	32/Bsl	106.68	91-120	
22	<i>Lannea coromandelica</i>	Kambel	32/Bsl	91.44	91-120	
23	<i>Dalbergia sissoo</i>	Sissoo	32/Bsl	76.20	61-90	
24	<i>Malotus philippensis</i>	Kamila	32/Bsl	50.80	31-60	
25	<i>Malotus philippensis</i>	Kamila	32/Bsl	68.58	61-90	
26	<i>Pyrus paschia</i>	Kainth	32/Bsl	68.58	61-90	
27	<i>Pyrus paschia</i>	Kainth	32/Bsl	55.88	31-60	
28	<i>Lannea coromandelica</i>	Kambel	32/Bsl	106.68	91-120	
29	<i>Lannea coromandelica</i>	Kambel	32/Bsl	127.00	121-150	
30	<i>Malotus philippensis</i>	Kamila	32/Bsl	55.88	31-60	
31	<i>Pyrus paschia</i>	Kainth	32/Bsl	53.34	31-60	
32	<i>Pyrus paschia</i>	Kainth	32/Bsl	60.96	31-60	
33	<i>Flacourtia indica</i>	Kakoa	32/Bsl	66.04	61-90	
34	<i>Flacourtia indica</i>	Kakoa	32/Bsl	25.40	0-30	
35	<i>Flacourtia indica</i>	Kakoa	32/Bsl	27.94	0-30	
36	<i>Flacourtia indica</i>	Kakoa	32/Bsl	33.02	31-60	
37	<i>Flacourtia indica</i>	Kakoa	32/Bsl	20.32	0-30	
38	<i>Flacourtia indica</i>	Kakoa	32/Bsl	30.48	31-60	
39	<i>Pyrus paschia</i>	Kainth	32/Bsl	55.88	31-60	
40	<i>Malotus philippensis</i>	Kamila	32/Bsl	68.58	61-90	
41	<i>Bombax ceiba</i>	Simbal	32/Bsl	127.00	121-150	
42	<i>Lannea coromandelica</i>	Kambel	32/Bsl	157.48	Above 150	
43	<i>Lannea coromandelica</i>	Kambel	32/Bsl	137.16	121-150	
44	<i>Lannea coromandelica</i>	Kambel	32/Bsl	129.54	121-150	
45	<i>Lannea coromandelica</i>	Kambel	32/Bsl	162.56	Above 150	
46	<i>Flacourtia indica</i>	Kakoa	32/Bsl	58.42	31-60	
47	<i>Dalbergia sissoo</i>	Sissoo	32/Bsl	86.36	61-90	
48	<i>Pyrus paschia</i>	Kainth	32/Bsl	68.58	61-90	
49	<i>Pyrus paschia</i>	Kainth	32/Bsl	81.28	61-90	
50	<i>Pyrus paschia</i>	Kainth	32/Bsl	60.96	31-60	
51	<i>Malotus philippensis</i>	Kamila	32/Bsl	86.36	61-90	
52	<i>Malotus philippensis</i>	Kamila	32/Bsl	96.52	91-120	
53	<i>Pyrus paschia</i>	Kainth	32/Bsl	78.74	61-90	
54	<i>Cassia fistula</i>	Amaltas	32/Bsl	22.86	0-30	
55	<i>Cassia fistula</i>	Amaltas	32/Bsl	22.86	0-30	
56	<i>Cassia fistula</i>	Amaltas	32/Bsl	17.78	0-30	
57	<i>Cassia fistula</i>	Amaltas	32/Bsl	30.48	31-60	
58	<i>Cassia fistula</i>	Amaltas	32/Bsl	30.48	31-60	

  
 Range Forest Officer  
 Basohli Forest Range  
 Basohli



S.No	Scientific Name	Species	Comptt.No	Girth (in cm)	Dia Girth-Class (in cm)	Remarks
59	Cassia fistula	Amaltas	32/Bsl	17.78	0-30	
60	Cassia fistula	Amaltas	32/Bsl	20.32	0-30	
61	Flacourtia indica	Kakoa	32/Bsl	55.88	31-60	
62	Pyrus paschia	Kainth	32/Bsl	55.88	31-60	
63	Lannea coromandelica	Kambel	32/Bsl	200.66	Above 150	
64	Pyrus paschia	Kainth	32/Bsl	96.52	91-120	
65	Malotus philippensis	Kamila	32/Bsl	68.58	61-90	
66	Pyrus paschia	Kainth	32/Bsl	55.88	31-60	
67	Pyrus paschia	Kainth	32/Bsl	66.04	61-90	
68	Flacourtia indica	Kakoa	32/Bsl	55.88	31-60	
69	Lannea coromandelica	Kambel	32/Bsl	91.44	91-120	
70	Malotus philippensis	Kamila	32/Bsl	50.80	31-60	
71	Malotus philippensis	Kamila	32/Bsl	76.20	61-90	
72	Lannea coromandelica	Kambel	32/Bsl	106.68	91-120	
73	Malotus philippensis	Kamila	32/Bsl	58.42	31-60	
74	Malotus philippensis	Kamila	32/Bsl	33.02	31-60	
75	Malotus philippensis	Kamila	32/Bsl	22.86	0-30	
76	Malotus philippensis	Kamila	32/Bsl	22.86	0-30	
77	Malotus philippensis	Kamila	32/Bsl	17.78	0-30	
78	Malotus philippensis	Kamila	32/Bsl	22.86	0-30	
79	Malotus philippensis	Kamila	32/Bsl	15.24	0-30	
80	Malotus philippensis	Kamila	32/Bsl	15.24	0-30	
81	Malotus philippensis	Kamila	32/Bsl	33.02	31-60	
82	Malotus philippensis	Kamila	32/Bsl	33.02	31-60	
83	Lannea coromandelica	Kambel	32/Bsl	139.70	121-150	
84	Lannea coromandelica	Kambel	32/Bsl	157.48	Above 150	
85	Malotus philippensis	Kamila	32/Bsl	68.58	61-90	
86	Acacia catechu	Khair	32/Bsl	76.20	61-90	
87	Cassia fistula	Amaltas	32/Bsl	45.72	31-60	
88	Malotus philippensis	Kamila	32/Bsl	68.58	61-90	
89	Pyrus paschia	Kainth	32/Bsl	71.12	61-90	
90	Pyrus paschia	Kainth	32/Bsl	50.80	31-60	
91	Pyrus paschia	Kainth	32/Bsl	68.58	61-90	
92	Malotus philippensis	Kamila	32/Bsl	55.88	31-60	
93	Acacia catechu	Khair	32/Bsl	81.28	61-90	
94	Lannea coromandelica	Kambel	32/Bsl	76.20	61-90	
95	Flacourtia indica	Kakoa	32/Bsl	45.72	31-60	
96	Pyrus paschia	Kainth	32/Bsl	81.28	61-90	
97	Cassia fistula	Amaltas	32/Bsl	55.88	31-60	
98	Pyrus paschia	Kainth	32/Bsl	22.86	0-30	
99	Pyrus paschia	Kainth	32/Bsl	20.32	0-30	
100	Pyrus paschia	Kainth	32/Bsl	22.86	0-30	
101	Pyrus paschia	Kainth	32/Bsl	30.48	31-60	
102	Pyrus paschia	Kainth	32/Bsl	33.02	31-60	
103	Pyrus paschia	Kainth	32/Bsl	17.78	0-30	
104	Pyrus paschia	Kainth	32/Bsl	17.78	0-30	
105	Lannea coromandelica	Kambel	32/Bsl	91.44	91-120	
106	Pyrus paschia	Kainth	32/Bsl	76.20	61-90	
107	Pyrus paschia	Kainth	32/Bsl	50.80	31-60	
108	Malotus philippensis	Kamila	32/Bsl	76.20	61-90	
109	Pyrus paschia	Kainth	32/Bsl	55.88	31-60	
110	Cassia fistula	Amaltas	32/Bsl	60.96	31-60	
111	Lannea coromandelica	Kambel	32/Bsl	127.00	121-150	

*[Signature]*  
Range Forest Officer  
Basohli Forest Range  
Basohli

*[Signature]*  
Divisional Forest Officer  
Basohli Forest Division  
Basohli

**GOVERNMENT OF JAMMU AND KASHMIR**  
**OFFICE OF THE DIVISIONAL FOREST OFFICER**  
**BASOHLI FOREST DIVISION**  
**BASOHLI**

Ph./Fax No. 01921-251050

\*\*\*\*\*

Email: dfobasohli@gmail.com

**Detail of Violation and Action taken Report:**

As per the site inspection, it has been observed that the user agency. (PMGSY) has violated the provisions of the Forest (Conservation) Act, 1980 by constructing of road from Towara to Dodla without processing the case under the provisions of the Forest (Conservation) Act, 1980 and is liable for punishment under rule 3 (B) issued by the Assistant Inspector General of Forests Ministry of Environment, Forest & Climate Change (Government of India) vide F.No. 11-42/2017-FC dt-29 01 2018.

- a. The penalty for violation shall be equal to NPV of forest land per hectare for **each year** of violation from the date of actual diversion as reported by the inspecting officer with maximum up to **five (5) times the NPV** plus 12 percent simple interest till the deposit is made.
- b. In case of public utility projects of the government the penalty shall be 20 % of the penalty proposed in para (a) above.

**A.** The user agency has not followed the due procedure for forest land diversion and has constructed the said road some 05 years back as reported by Range Officer Basohli. The penalty as such calculated is as under:

1. Total NPV =	Rs. 17,84,133.00
2. Penalty for 05 years = 5 x NPV =	Rs. 89,20,665.00
3. Simple Interest @ 12% in penalty amount =	Rs. 10,70,479.00
4. Total penalty amount =	Rs. 99,91,144.00

5. 20% of recoverable penalty amount  
(since the project is of public utility)= **Rs. 19,98,228.00**

**B. Description of trees damaged:**

S. NO	Comptt.	Species	Dia Class	Nos. Trees /Poles damaged	Cost of damage as per ( 10 FST of 2018)	Cost of damage @ 10 times
1	32/Bsl	Kainth (Pyrus paschia)	0-10	13	163.00	1630.00
2			10-20	14	570.00	5700.00
3			20-30	12	1140.00	11400.00
4			30-40	1	2199.00	21990.00
5		Kamila (Malotus philippensis)	0-10	9	163.00	1630.00
6			10-20	6	570.00	5700.00
7			20-30	11	1140.00	11400.00
8			30-40	1	2199.00	21990.00
9		Simbal (Bombax ceiba)	40-50	1	15306.00	153060.00
10		Kakoa (Flacourtia indica)	0-10	5	163.00	1630.00
11			10-20	5	570.00	5700.00
12			20-30	1	1140.00	11400.00
13		Khair (Acacia catechu)	20-30	2	3040.00	30400.00



14		Sissoo (Dalbergia sissoo)	20-30	3	4559.00	45590.00
15			0-10	7	435.00	4350.00
16		Amaltas (Cassia fistula)	10-20	4	1520.00	15200.00
17			20-30	4	3040.00	30400.00
18			30-40	3	5862.00	58620.00
19		Kambel (Lannea coromandelica)	40-50	5	10204.00	102040.00
20			50-60	3	16066.00	160660.00
21			60-70	1	24099.00	240990.00
		<b>Total Damage cost (B)</b>		<b>111</b>	<b>94148.00</b>	<b>941480.00</b>

A. 20% of recoverable penalty amount = Rs. 19,98,228.00

B. Penalty Tree Damage cost = Rs. 9,41,480.00

**Total Penalty Amount = Rs. 29,39,708.00**

As per the standing Govt. orders/directions and keeping in view of the violation of Forest Conservation Act, 1980 the user agency is recommended to pay 20% of the penalty proposed in the Para (a) above and cost of tree damaged which is calculated as Rs. Rs. 29,39,708.00 (rupees twenty nine lacs thirty nine thousand seven hundred eight only) it is as such requested/recommended that the case may kindly be approved under the provisions of the FCA, 1980 please.



**(Ashwani Kumar) SFS**  
**Divisional Forest Officer**  
**Basohli Forest Division**  
**Basohli**

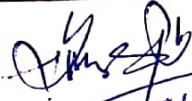
Full Title of the Project: Construction of road from Towara to Dodla.


File No.: FP/JK/ROAD/149047/2021

Date of Proposal: 17-11-2021

## Calculation Sheet of Net Present Value

S.No.	Division	Comptt.	Forest Area (Hact.)	Canopy Density	Eco class	VPV Rate (Lacs Rs./Ha)	NPV Amount (Rs)
1	2	3	4	5	6	7	8
1	Basholi	32/Bsl	1.38	Dense Forest (<0.4)	Class-V	1292850.00	₹ 17,84,133.00
1. N.P.V. of Forest Land Involved:							₹ 17,84,133.00
2. Penal N.P.V.							₹ 29,39,708.00
Total Amount							₹ 47,23,841.00
Rupees forty seven lacs twenty three thousand eight hundred forty one only							

  
 Range Forest Officer  
 Basholi Forest Range  
 Basholi

  
 Ashwani Kumar (SFS)  
 Division Forest Officer  
 Basholi Forest Division  
 Basholi



# Georeference Map for CA Plan

GT Sheet No 43 P/10

1:1,500

75°41'0"E

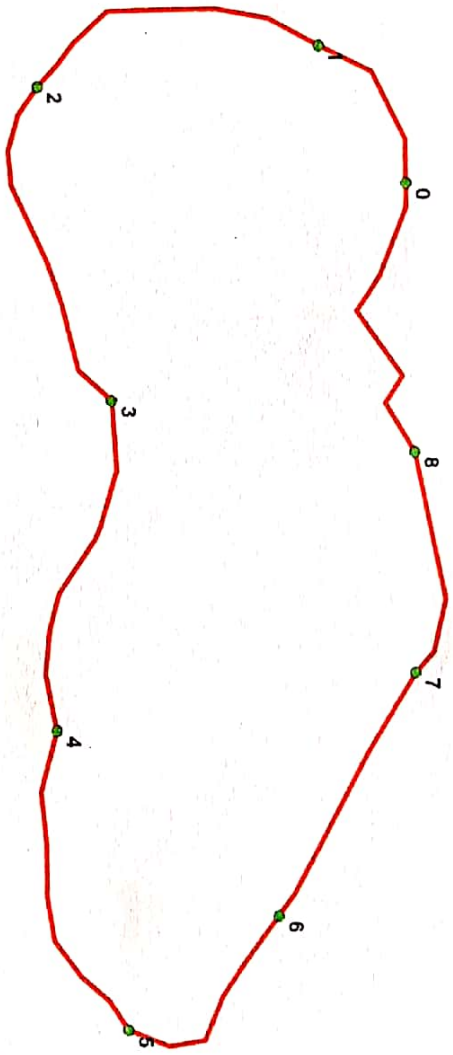
75°41'15"E



## CA Plan for Gutra 33 Blr

FID	Longitude	Latitude
0	75° 41' 2.773" E	32° 37' 19.767" N
1	75° 41' 1.108" E	32° 37' 18.875" N
2	75° 41' 1.571" E	32° 37' 15.980" N
3	75° 41' 5.377" E	32° 37' 16.714" N
4	75° 41' 9.350" E	32° 37' 16.131" N
5	75° 41' 12.958" E	32° 37' 16.841" N
6	75° 41' 11.615" E	32° 37' 18.395" N
7	75° 41' 8.704" E	32° 37' 19.831" N
8	75° 41' 6.027" E	32° 37' 19.840" N

GPS Coordinates  
CA Polygon



32°37'15"N

32°37'15"N

75°41'0"E

75°41'15"E

ICT PI DIVISION J&K JAMMU

*[Signature]*  
Divisional Forest Officer  
Basohli Forest Division  
Basohli



75°40'45"E

SOI Map for CA Plan

75°41'0"E

75°41'15"E

GT Sheet No 43 P/10

75°41'30"E

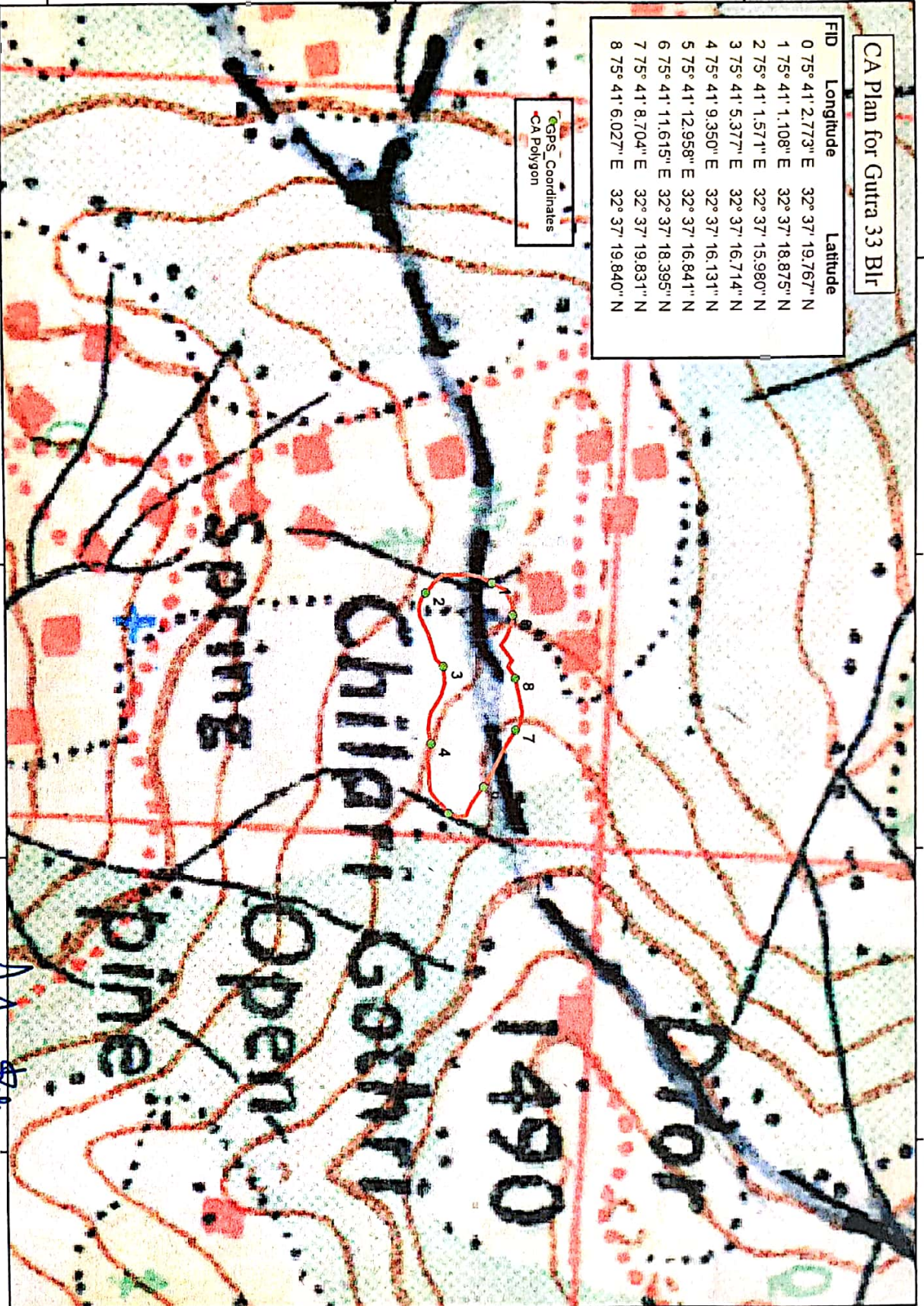
1:5,000



### CA Plan for Gutra 33 Blr

FID	Longitude	Latitude
0	75° 41' 2.773" E	32° 37' 19.767" N
1	75° 41' 1.108" E	32° 37' 18.875" N
2	75° 41' 1.571" E	32° 37' 15.980" N
3	75° 41' 5.377" E	32° 37' 16.714" N
4	75° 41' 9.350" E	32° 37' 16.131" N
5	75° 41' 12.958" E	32° 37' 16.841" N
6	75° 41' 11.615" E	32° 37' 18.395" N
7	75° 41' 8.704" E	32° 37' 19.831" N
8	75° 41' 6.027" E	32° 37' 19.840" N

GPS Coordinates  
CA Polygon



32°37'0"N

32°37'15"N

32°37'30"N

75°40'45"E

75°41'0"E

75°41'15"E

75°41'30"E

32°37'0"N

32°37'15"N

32°37'30"N

ICT PI DIVISION JK & JAMMU

Divisional Forest Officer  
Rajesh Forest Division

Basohli