

## **COMPENSATORY AFFORESTATION. SITE SUITABILITY CERTIFICATE**

### **PROPOSED VOLUNTARY RELOCATION AREAS**

From the land agency has proposed only 7.40 Ha land is suitable we have proposed another degraded forest area for CA which is having an area of 25.70 Ha from both this lands we will be able to do the CA for the complete diverted land

From the field examination of proposed voluntary relocation settlements of Chullikkad, Manalvayal, Kollivayal, Madaparambu areas, we have found that 4.2 Ha of land is suitable for planting. However, this extent of land was calculated after excluding areas such as existing buildings and sheds, Vayal areas, Water bodies and wells, Tree plantations such as Coconut, Arecanut, Silve Oak, and heavy bamboo growth areas. These details are give below.

SL NO	AREA	EXTENT(Ha)
1	CHULLIKKAD	2.00
2	KOLLIVAYAL	0.30
3	MANALVAYAL	0.90
4	MADAPARAMBU	1.00
	TOTAL	4.20

However, it is possible to plant suitable species in between the trees or after cutting and removing cash crops. It is also possible to raise a plantation after demolishing the existing building in each area. If we include the area of existing buildings and sheds, tree plantations such as Coconut, Arecanut, Silve Oak, and heavy bamboo growth areas, we can get an additional 3.2 Ha land suitable for planting trees. These details and location sketches are given below.

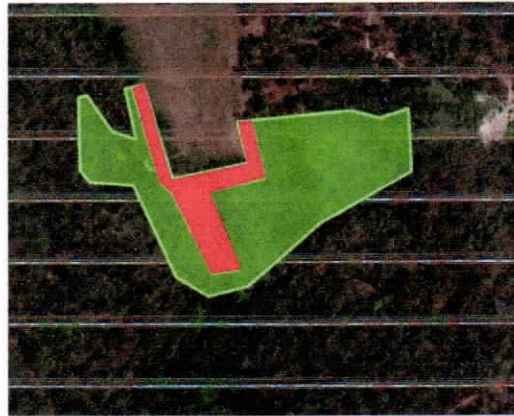
SL NO	AREA	EXTENT(Ha)
1	CHULLIKKAD	3.80
2	KOLLIVAYAL	0.50
3	MANALVAYAL	0.90
4	MADAPARAMBU	2.20
	TOTAL	7.40

### **1959 KURICHIPATTA TEAK PLANTATION (BIT-1)**

Clear felling of bit-1 of Kurichipatta Teak plantation 1959, under Pulpally Forest Station of Chedleth Range as per the working plan of South Wayanad Division has done in the year 2021-22. Total area of the Bit-1 is 25.7 Ha of which 10.6 Ha can be used for CA Planting.

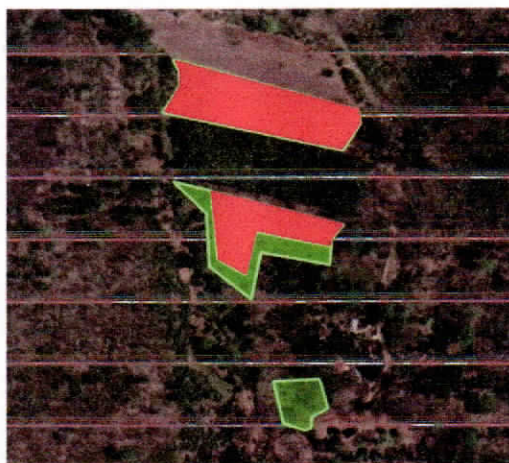
SL No	Total Area (Ha)	Effective Extent for Planting (Ha)
1	25.7	10.6

# CHULLIKKAD



- AREA NOT SUITABLE FOR PLANTING
- AREA SUITABLE FOR PLANTING - 3.8 HA

# KOLLIVAYAL



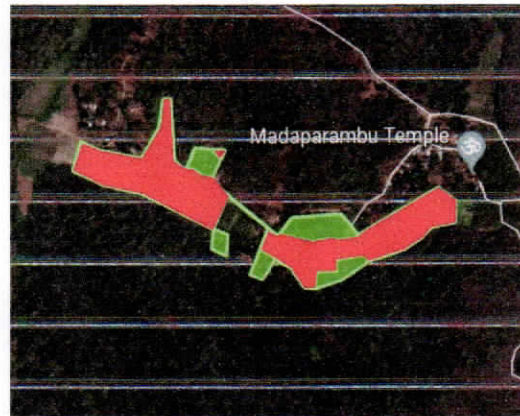
- AREA NOT SUITABLE FOR PLANTING
- AREA SUITABLE FOR PLANTING - 0.5 HA

# MANAL VAYAL



- AREA NOT SUITABLE FOR PLANTING
- AREA SUITABLE FOR PLANTING - 0.9 HA

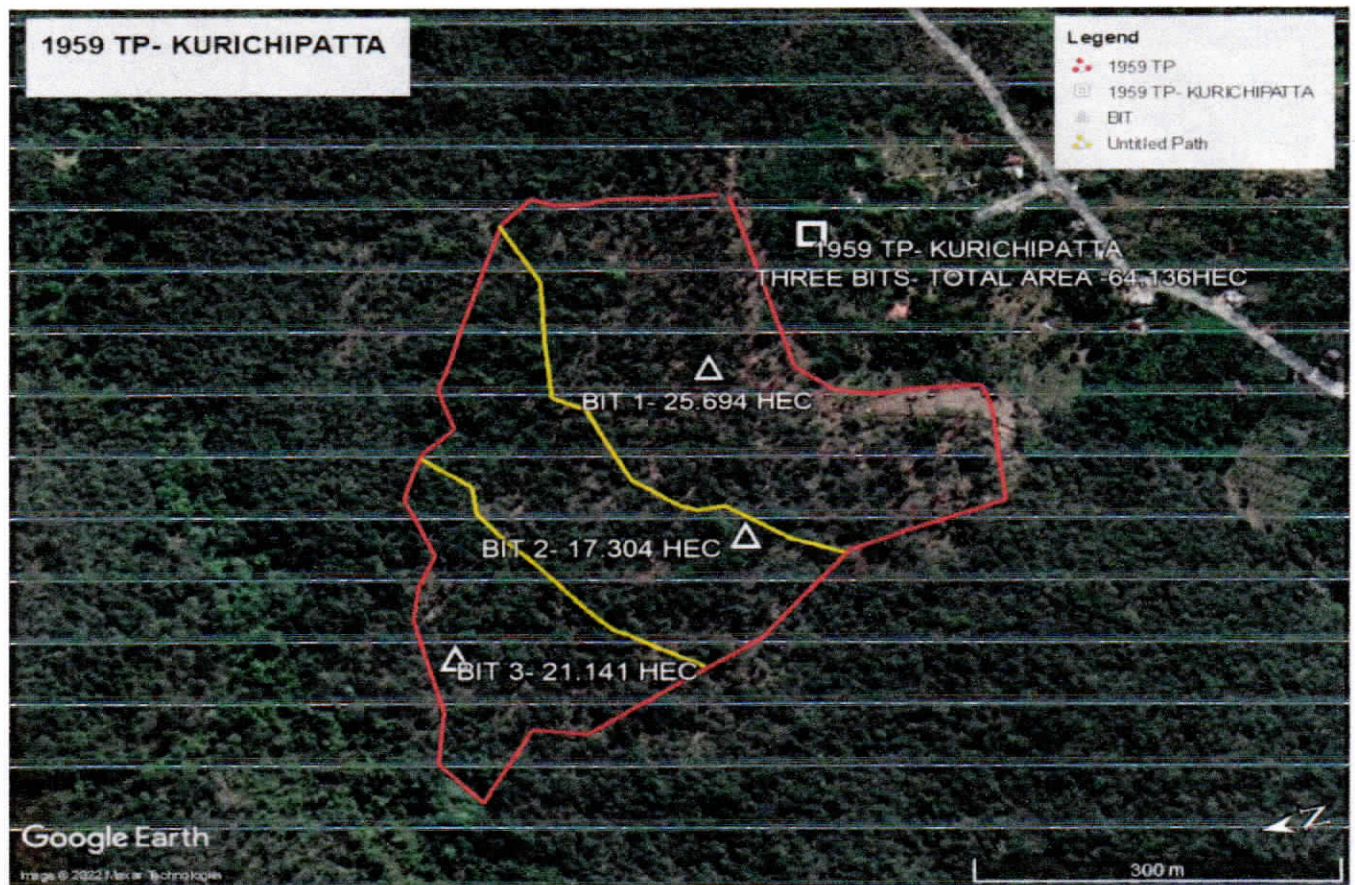
## MADAPARAMBU




- AREA NOT SUITABLE FOR PLANTING
- AREA SUITABLE FOR PLANTING - 2.2 HA



## 1959 KURICHIPATTA TEAK PLANTATION (BIT -I)



- Area Suitable for Planting -10.6 Ha

  
Divisional Forest Officer  
South Wayanad Division