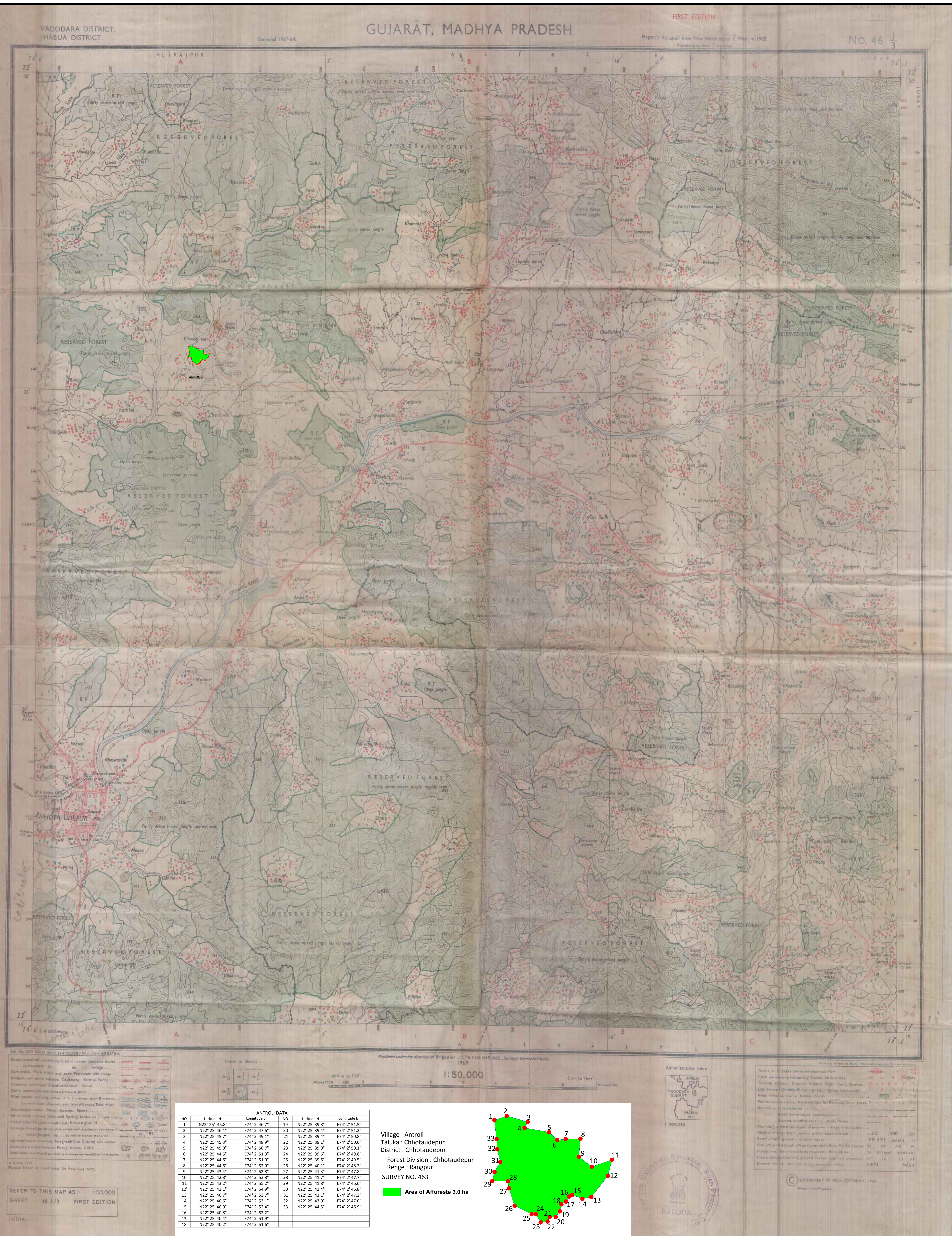




**DETAILED SCHEME OF COMPENSATORY AFFRESTATION TO BE CARRIED OUT IN LIEU OF 1.0587 HA. OF PROTECTED FOREST LAND FOR THE PROJECT OF CONSTRUCTION OF ROW ON SAVLI-TIMBA ROAD AT K.M. 37.7 TO K.M. 38.05 AND AHMEDABAD-GODHRA ROAD AT K.M. 98.2 TO K.M. 98.550 NEAR UDALPUR IN SAVLI TALUKA FOR EXECUTIVE ENGINEER , DIST. (R&B) DIVISION, ALKAPURI, VADODARA IN S.F.DIVISION, VADODARA IN GUJARAT**



Key No. 1079 (H.2) (S. C. 11) (33) (33) - 643 75 - 2986 80.

Roads metalled: according to imp-taxon: distance stone - unmetalled do. do. do. bridge.

Cart-track, Push track and pass, Footpath with bridge.

Bridges: over pass, viaduct, Cableway, Ford or Ferry.

Streams, with track to base, cascades, Canal.

Dams: masonry or rock, stone, concrete, weir.

River banks: shoring, steep, 3 to 6 metres, over 6 metres.

dry with water channel, with water & rocks, Tidal river.

Submerged rocks, Shallow, Swamp, Roads.

Wells: (road, village), Well, well, Spring, Tanks: perennial, dry.

Waterfalls, cascades, rapids, falls, Broken ground.

Baluchee, banded, banded, white with various under cover.

Other: (road, village), Well, well, Spring, Tanks: perennial, dry.

Light railway or tramway, Telegraph line, Cutting with tunnel.

Contours with and without, Rocky, slopes, Cliffs.

Soil features: (road, village), Well, well, Spring, Tanks: perennial, dry.

1st Edition 1948.  
(Previous Edition in 1:50,000 scale 1st Edition 1947).

Index to Sheets

46/1	46/2	46/3	46/4
46/5	46/6	46/7	46/8

Scale: 1:50,000

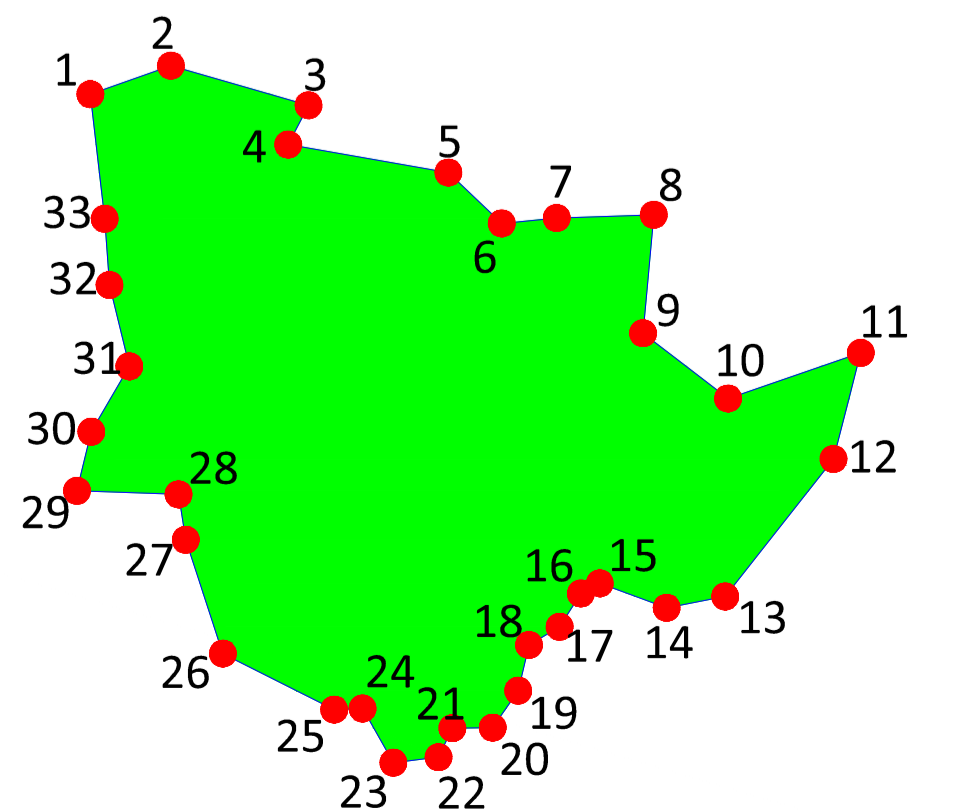
Measures: 500 m to 1 km, 2 cm to 1 km, 700 metres

Published under the direction of Brigadier J.S. PAITHEL, M.S., M.I.E., Surveyor General of India, 1969.

ANTROLI DATA					
NO	Latitude N	Longitude E	NO	Latitude N	Longitude E
1	N22° 25' 45.8"	E74° 2' 46.7"	19	N22° 25' 39.8"	E74° 2' 51.5"
2	N22° 25' 46.1"	E74° 2' 47.6"	20	N22° 25' 39.1"	E74° 2' 51.2"
3	N22° 25' 45.7"	E74° 2' 49.1"	21	N22° 25' 39.4"	E74° 2' 50.8"
4	N22° 25' 45.3"	E74° 2' 48.9"	22	N22° 25' 39.1"	E74° 2' 50.6"
5	N22° 25' 45.0"	E74° 2' 50.7"	23	N22° 25' 39.0"	E74° 2' 50.1"
6	N22° 25' 44.5"	E74° 2' 51.3"	24	N22° 25' 39.6"	E74° 2' 49.8"
7	N22° 25' 44.6"	E74° 2' 51.9"	25	N22° 25' 39.6"	E74° 2' 49.5"
8	N22° 25' 44.6"	E74° 2' 52.9"	26	N22° 25' 40.1"	E74° 2' 48.2"
9	N22° 25' 43.4"	E74° 2' 52.8"	27	N22° 25' 41.3"	E74° 2' 47.8"
10	N22° 25' 42.8"	E74° 2' 53.8"	28	N22° 25' 41.7"	E74° 2' 47.7"
11	N22° 25' 43.2"	E74° 2' 55.2"	29	N22° 25' 41.8"	E74° 2' 46.6"
12	N22° 25' 42.1"	E74° 2' 56.9"	30	N22° 25' 42.1"	E74° 2' 46.8"
13	N22° 25' 40.7"	E74° 2' 53.7"	31	N22° 25' 43.1"	E74° 2' 47.2"
14	N22° 25' 40.6"	E74° 2' 53.1"	32	N22° 25' 43.9"	E74° 2' 47.0"
15	N22° 25' 40.9"	E74° 2' 52.4"	33	N22° 25' 44.5"	E74° 2' 46.9"
16	N22° 25' 40.8"	E74° 2' 52.2"			
17	N22° 25' 40.4"	E74° 2' 51.9"			
18	N22° 25' 40.2"	E74° 2' 51.6"			

Village : Antroli  
Taluka : Chhotaudepur  
District : Chhotaudepur  
Forest Division : Chhotaudepur  
Range : Rangpur  
SURVEY NO. 463

Area of Afforestation 3.0 ha



Administrative Index

3 DISPUTED

GOVERNMENT OF INDIA, GOVERNMENT OF GUJARAT

MAHARAJA

GOVERNMENT OF INDIA, GOVERNMENT OF GUJARAT

Price: Five Rupees