

No. 5145  
HP Forest Department.

Dated Rampur, the 1-12-15

From: - DFO Rampur.

To: - C.C.F (T) Rampur

Subject: - Diversion of 0.8374 hac of forest land in favour of Rampur Hydro Electric Project, SJVN Ltd. VPO Jhakri Tehsil Rampur Bushahr Distt Shimla H.P. for the construction of River training, road & road protection etc within the jurisdiction of Rampur Forest Division, Distt Shimla H.P.

Memo:

Kindly refer to your office Memo No. 3950 dated 14-9-2015 on the subject cited

above.


2. In this context, it is intimated that the user agency has re-submitted the case after attending the following observations and removing shortcomings as under:-

S. No.	Observations	Compliance
1.	KML file of area proposed for diversion not uploaded.	There is no option of reloading KML on forest clearance online portal. Therefore, the KML file of area for diversion is enclosed as Annexure-I in the CD.
2.	Area proposed for diversion not properly marked on Soi Toposheet attached in Part-I	Area proposed for diversion magnified and conspicuously marked to shape at Annexure-2.
3.	Components in digital map attached as part-IC is not as per detail and area of components given at B 2.4 Part-I because as per dimension the components are liner in nature but in the map it is not so. In addition area of road and bridge also does not appear to be included in the area proposed for diversion shown on the map.	Forest land proposed for diversion i.e. 0.8374 ha. (consisting of 0.2479 ha. for road, 0.5655 ha. for river training & road protection and 0.024 ha. for bridge abutment) is adjacent/adjoining with the land already acquired by SJVN Limited. Therefore the case for diversion is initiated only for the portions belonging to the Forest Department and same is also reported as a violation on the part of SJVN. The measurements and coordinates taken for various components is accurate on ground. The major portions of the patches of land to be diverted are falling outside road. These portions have been developed for river training and road protections. Although road symbolizes a liner shape but due to the above mentioned fact the land is required to be diverted in patches only. Citing the reason non-liner is mentioned at A (vi) of Form-A.
4.	Employment generated data not given	Components (road, bridge, abutment and river training/road protection) are already in place and likely not to generate any employment.
5.	Muck management plan not provided	Components already in place and insignificant quantum of muck generated has been utilized for back filling and these backfilled areas has been restored by

		applying Geo-Erosion Control Blanket Technique.
6.	Site inspection report of DFO indicates violation but detailed report on violation as per para 1.9 of chapter 1 of guidelines is not uploaded along with action taken report.	Needful has been done now.
7.	CA scheme not uploaded properly and could not be opened. May upload again.	Needful has been done now.
8.	Digital map of area proposed for CA giving geo coordinates at minimum 4 points in hard and soft copy duly authenticated by DFO not provided.	Digital map of CA area authenticated by DFO enclosed as Annexure-3.
9.	KML file of the area proposed for CA shows that road and khad area is also included in CA which is not proper. May review area selected for CA.	Reviewed KML file enclosed as Annexure-4 in CD.
10.	Chief Secretary Certificate regarding non-availability of non-forest land for prescribed by MoEF & CC, Govt. of India.	Pertains to higher office.


It is therefore recommended that the proposal may kindly be sent to Gol for according necessary approval under Section 2 of Forest Conservation Act, 1980. Four copies of documents are being sent herewith for taking further necessary action at your end please.

Encl: - As above.

  
Divisional Forest Officer,  
Rampur Forest Division,  
Rampur Bushahr, H.P.

Endst. No. \_\_\_\_\_ / Dated Rampur, the \_\_\_\_\_

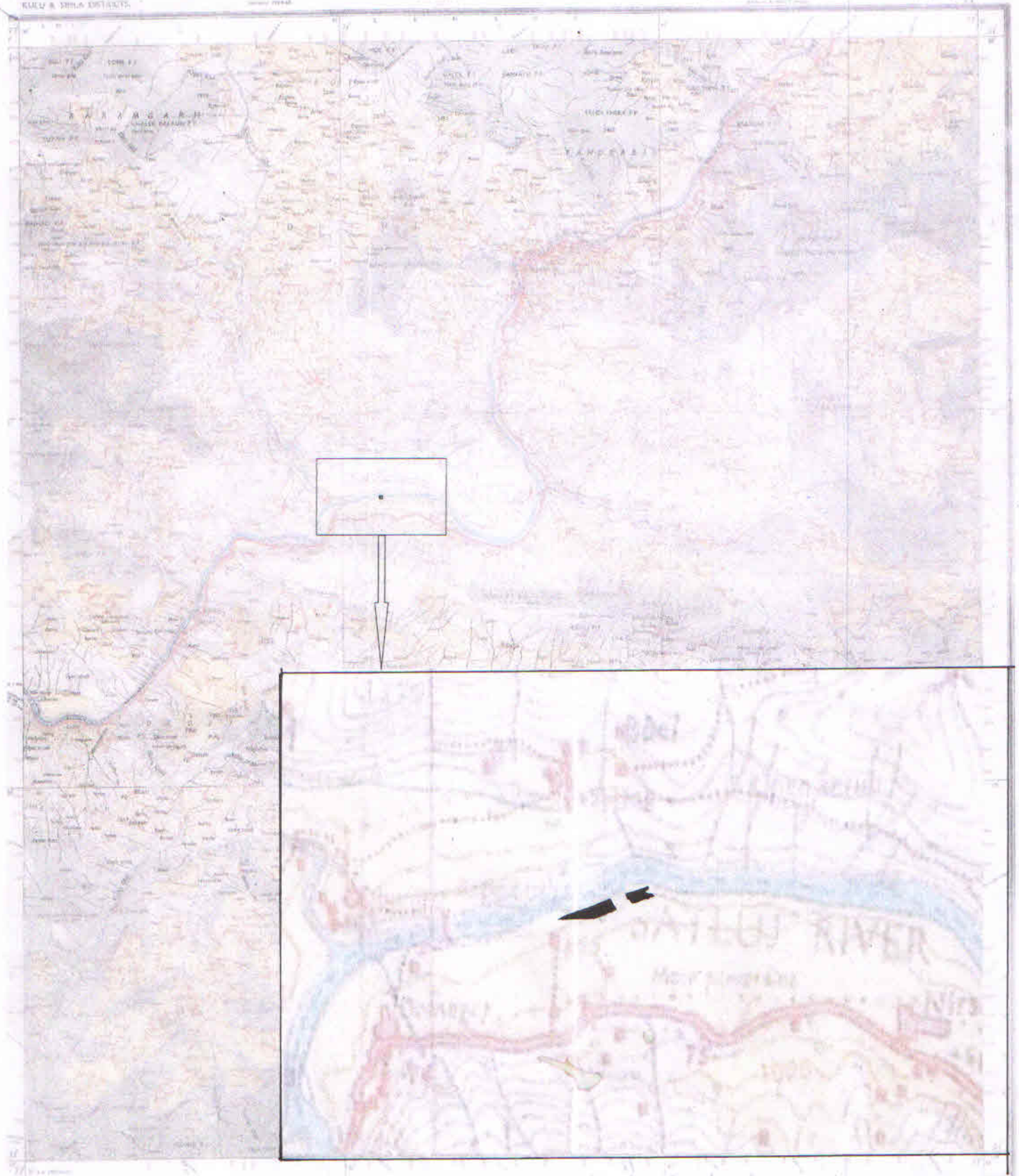
- Copy is forwarded General Manager (Project) Rampur Hydroelectric Project, SJVN Ltd., Jhakri Tehsil Rampur Bushahr, Distt. Shimla H.P for information w.r.t. his above referred letter.
- Copy alongwith proposal folder is forwarded to R.O. Rampur for information and necessary action.

  
Divisional Forest Officer,  
Rampur Forest Division,  
Rampur Bushahr, H.P.



HIMACHAL PRADESH

No 33 F



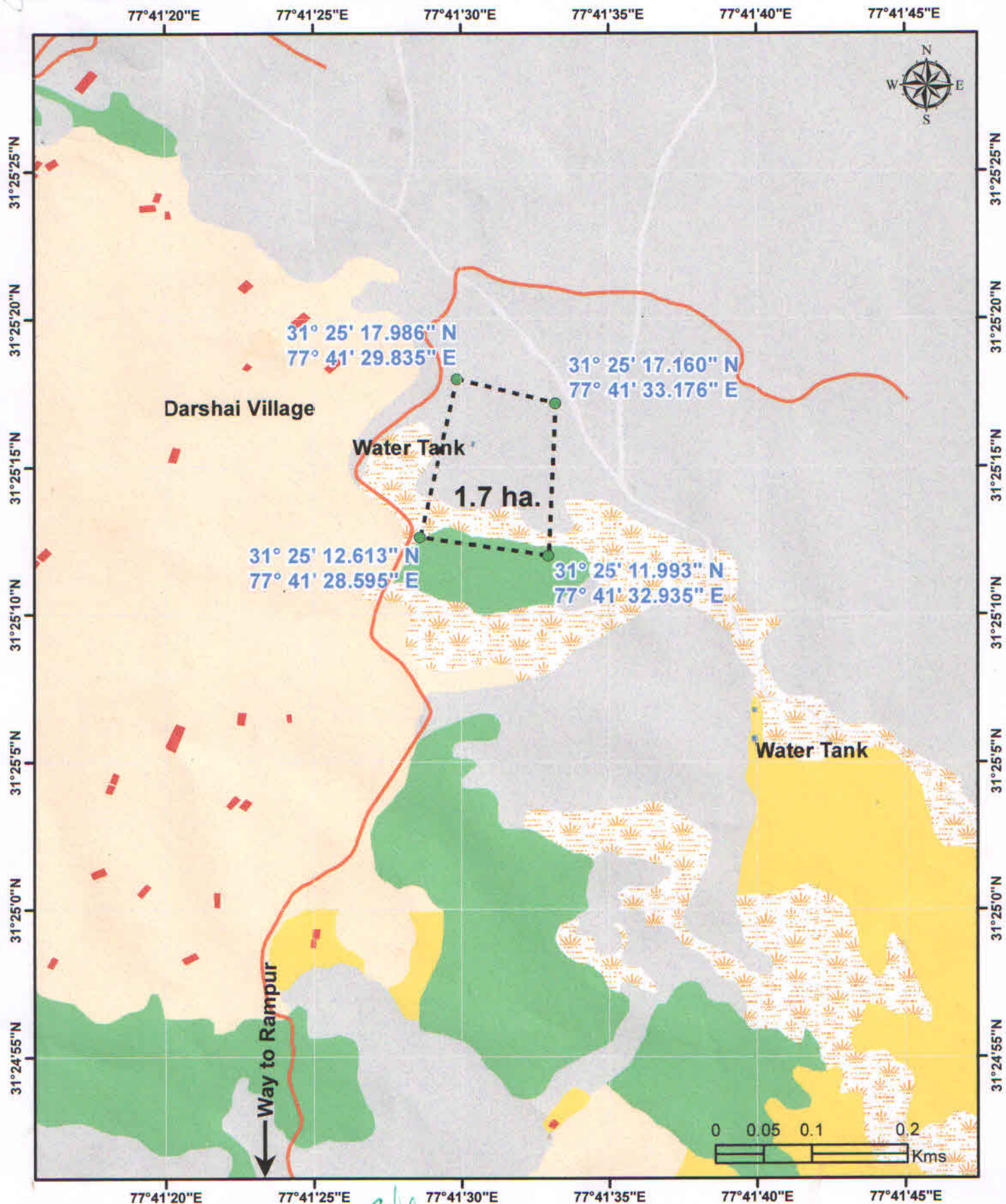
*Inchune*  
Divisional Forest Officer  
Rampur Forest Division  
Rampur Bushahr (H.P.)

**F. Badaik**  
Addl. General Manager (P&S)  
Rampur HEP, Jhakri-1722

Location of area shown  
*Taghon*



# Digital Map of Compensatory Afforestation Site Rampur Hydro Electric Project (412 MW)



Prepared by:



State Council for Science Technology &amp; Environment Shimla

**Divisional Forest Officer**  
**Rampur Forest Division**  
**Rampur Buzhahr (H.P.)**

## Index

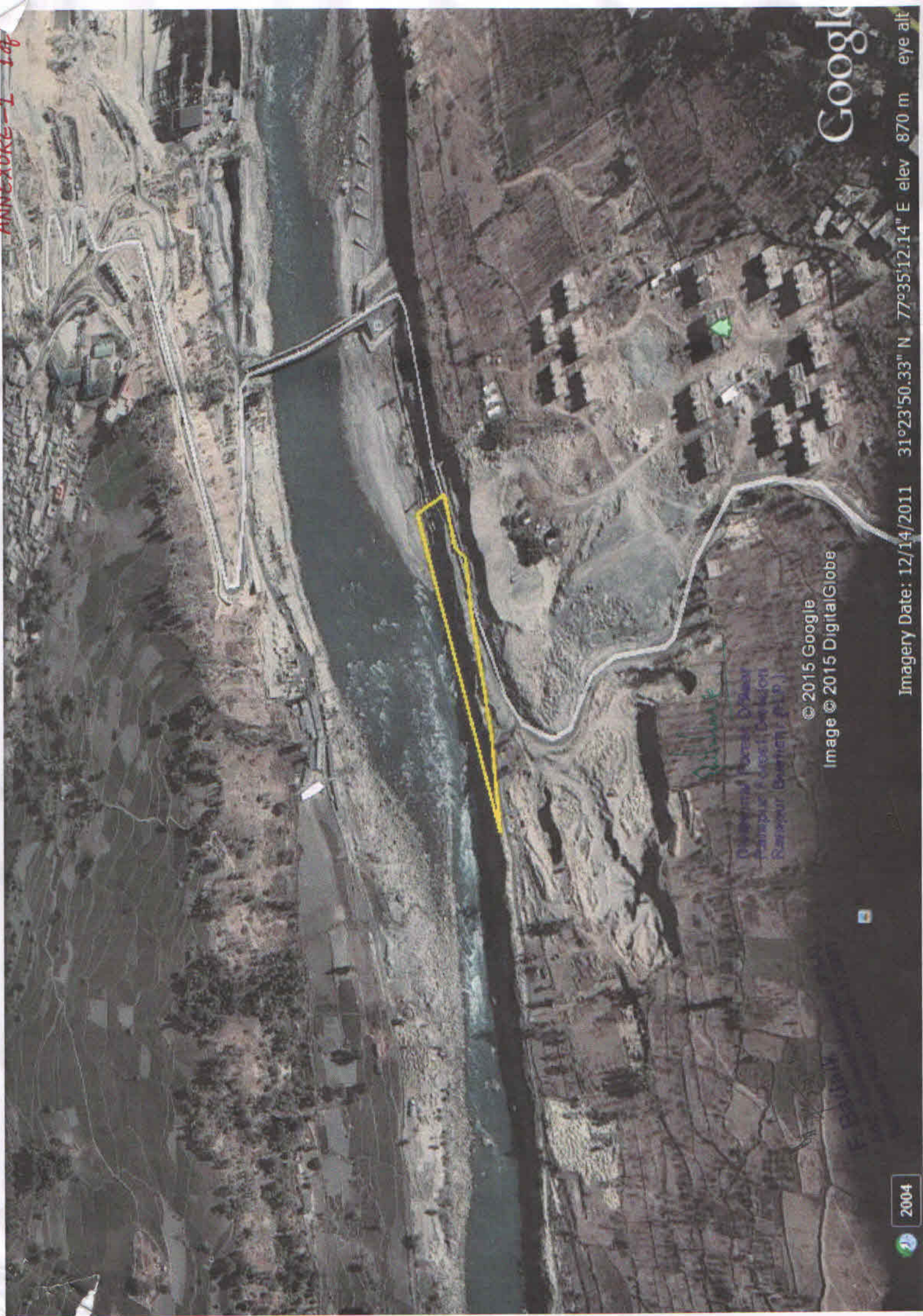
- Proposed Compensatory Afforestation Site
- Road
- Builtup
- Water Tank
- Agricultural Land
- Degraded Forest
- Dry Stream Bed
- Orchard
- Shrubs
- Open/Barren/Rocky/Waste Land

© Copyrighted to AGISAC, under the aegis of State Council for Science, Technology & Environment, H.P.

This map has been prepared from the references (Latitude, Longitude, Altitude) and base map provided by the user agency and the AGISAC owes no responsibility of the correctness and accuracy of the same.

**F. Badak**  
**Addl. General Manager (P&A)**  
**Rampur HEP, Jhakri-172201**





© 2015 Google  
Image © 2015 DigitalGlobe

Google





1. **Subsidiary**  
 2. **Forest Division**  
 3. **Forest Division**  
 4. **Forest Division**  
 5. **Forest Division**  
 6. **Forest Division**  
 7. **Forest Division**  
 8. **Forest Division**  
 9. **Forest Division**  
 10. **Forest Division**  
 11. **Forest Division**  
 12. **Forest Division**  
 13. **Forest Division**  
 14. **Forest Division**  
 15. **Forest Division**  
 16. **Forest Division**  
 17. **Forest Division**  
 18. **Forest Division**  
 19. **Forest Division**  
 20. **Forest Division**  
 21. **Forest Division**  
 22. **Forest Division**  
 23. **Forest Division**  
 24. **Forest Division**  
 25. **Forest Division**  
 26. **Forest Division**  
 27. **Forest Division**  
 28. **Forest Division**  
 29. **Forest Division**  
 30. **Forest Division**  
 31. **Forest Division**  
 32. **Forest Division**  
 33. **Forest Division**  
 34. **Forest Division**  
 35. **Forest Division**  
 36. **Forest Division**  
 37. **Forest Division**  
 38. **Forest Division**  
 39. **Forest Division**  
 40. **Forest Division**  
 41. **Forest Division**  
 42. **Forest Division**  
 43. **Forest Division**  
 44. **Forest Division**  
 45. **Forest Division**  
 46. **Forest Division**  
 47. **Forest Division**  
 48. **Forest Division**  
 49. **Forest Division**  
 50. **Forest Division**  
 51. **Forest Division**  
 52. **Forest Division**  
 53. **Forest Division**  
 54. **Forest Division**  
 55. **Forest Division**  
 56. **Forest Division**  
 57. **Forest Division**  
 58. **Forest Division**  
 59. **Forest Division**  
 60. **Forest Division**  
 61. **Forest Division**  
 62. **Forest Division**  
 63. **Forest Division**  
 64. **Forest Division**  
 65. **Forest Division**  
 66. **Forest Division**  
 67. **Forest Division**  
 68. **Forest Division**  
 69. **Forest Division**  
 70. **Forest Division**  
 71. **Forest Division**  
 72. **Forest Division**  
 73. **Forest Division**  
 74. **Forest Division**  
 75. **Forest Division**  
 76. **Forest Division**  
 77. **Forest Division**  
 78. **Forest Division**  
 79. **Forest Division**  
 80. **Forest Division**  
 81. **Forest Division**  
 82. **Forest Division**  
 83. **Forest Division**  
 84. **Forest Division**  
 85. **Forest Division**  
 86. **Forest Division**  
 87. **Forest Division**  
 88. **Forest Division**  
 89. **Forest Division**  
 90. **Forest Division**  
 91. **Forest Division**  
 92. **Forest Division**  
 93. **Forest Division**  
 94. **Forest Division**  
 95. **Forest Division**  
 96. **Forest Division**  
 97. **Forest Division**  
 98. **Forest Division**  
 99. **Forest Division**  
 100. **Forest Division**

© 2015 Google

Image © 2015 DigitalGlobe

Imagery Date: 12/14/2011

31°23'52.64" N 77°35'23.45" E elev

Digitized by Google