

COMPENSATORY AFFORESTATION SITE SUITABILITY CERTIFICATE

PROPOSED VOLUNTARY RELOCATION AREAS

From the land agency has proposed , only 7.40 Ha of land is suitable for planting . This area will be suitable for compensatory afforestation in lieu of diverted land.

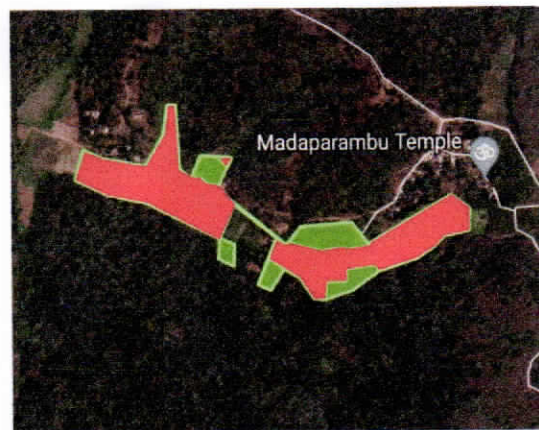
From the field examination of proposed voluntary relocation settlements of Chullikkad, Manalvayal, Kollivayal, Madaparambu areas, we have found that 4.2 Ha of land is suitable for planting. However, this extent of land was calculated after excluding areas such as existing buildings and sheds, Vayal areas, Water bodies and wells, Tree plantations such as Coconut, Arecanut, Silver Oak, and heavy bamboo growth areas. These details are give below.

SL NO	AREA	EXTENT(Ha)
1	CHULLIKKAD	2.00
2	KOLLIVAYAL	0.30
3	MANALVAYAL	0.90
4	MADAPARAMBU	1.00
	TOTAL	4.20

However, it is possible to plant suitable species in between the trees or after cutting and removing cash crops. It is also possible to raise a plantation after demolishing the existing building in each area. If we include the area of existing buildings and sheds, tree plantations such as Coconut, Arecanut, Silver Oak, and heavy bamboo growth areas, we can get an additional 3.2 Ha land suitable for planting trees. These details and location sketches are given below.

SL NO	AREA	EXTENT(Ha)
1	CHULLIKKAD	3.80
2	KOLLIVAYAL	0.50
3	MANALVAYAL	0.90
4	MADAPARAMBU	2.20
	TOTAL	7.40

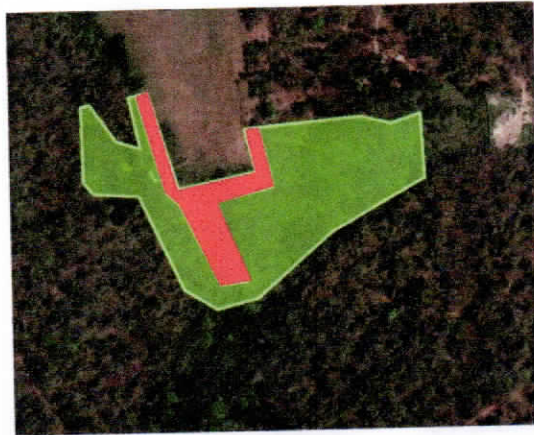
MADAPARAMBU



- AREA NOT SUITABLE FOR PLANTING
- AREA SUITABLE FOR PLANTING - 2.2 HA

h g

CHULLIKKAD



- AREA NOT SUITABLE FOR PLANTING
- AREA SUITABLE FOR PLANTING - 3.8 HA

h g a

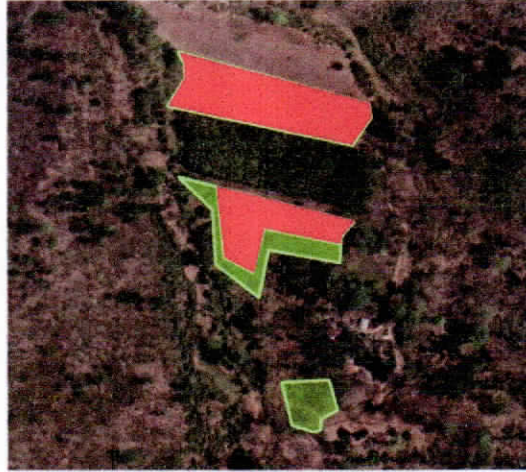
MANAL VAYAL



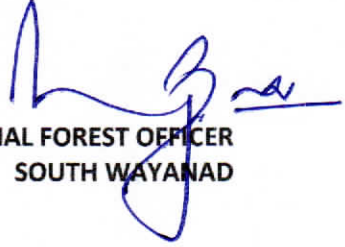
- AREA NOT SUITABLE FOR PLANTING
- AREA SUITABLE FOR PLANTING - 0.9 HA

h. g. na

KOLLIVAYAL



- AREA NOT SUITABLE FOR PLANTING
- AREA SUITABLE FOR PLANTING - 0.5 HA


DIVISIONAL FOREST OFFICER
SOUTH WAYANAD