

# MADHYA PRADESH

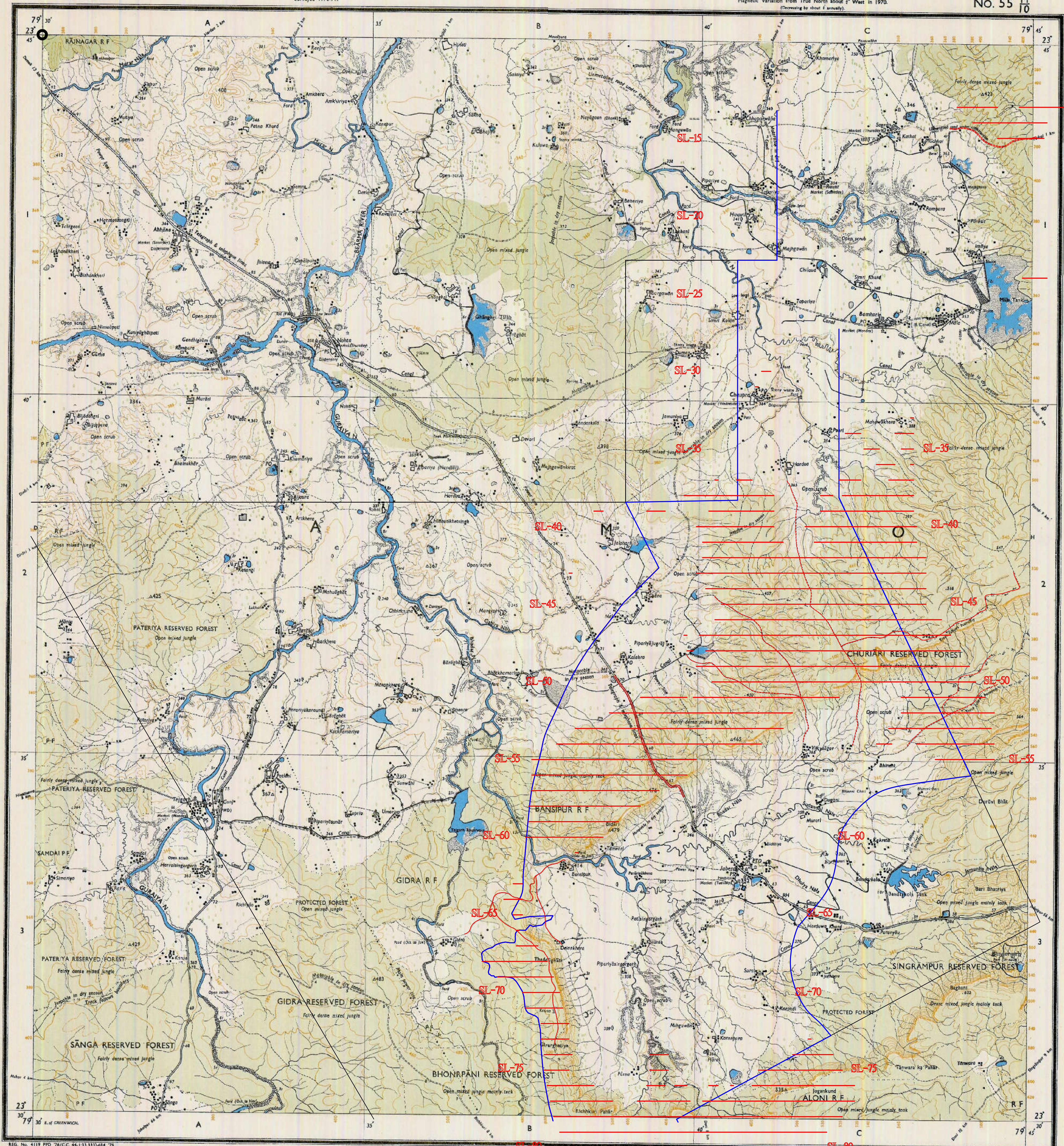
FIRST EDITION

No. 55 M/10

DAMOH DISTRICT

Surveyed 1970-71.

Magnetic Variation from True North about 2° West in 1970.  
(Changing by about 1' annually)



1:50,000  
SHEET 55 M/10 FIRST EDITION

Rock (unmetalled)	70
Cart-track	71
Foot path	72
Bridge with parapet	73
Stream with bank	74
Dam	75
River bank	76
Shaded rocks	77
Wells	78
Electric lines	79
Railways	80
Light railways	81
Contours	82
Sand features	83

Index to Sheets

55 M/10	55 M/11	55 M/12
55 M/9	55 M/10	55 M/11
55 M/8	55 M/9	55 M/10

Published under the direction of Major-General K.L. Khosla, Director, P.S. P.E., FIGLI, MASCE, (U.S.A.), Surveyor General of India, 1976.

Scale: 1:50,000  
300 m to 1 cm  
3000 500 0 2 4 6 8 10 Kilometres

HEIGHTS & CONTOURS IN METRES  
CONTOUR INTERVAL 20 METRES

Water features are shown in blue when they generally contain water. Contoured areas are coloured yellow. The extent boundaries of areas of reserved or protected forests are shown by green ribbons.

Contours are approximate. A relative height, or, represents the approximate height in metres between the top and bottom of a steep slope. Wooded areas are coloured green. Scattered trees and other vegetation are in green, but prominent surveyed trees are in black.

\*Not applicable

Administrative Index

DAMOH
-------

Points of Interest

Temples	84
Churches	85
Mosques	86
Tombs	87
Graves	88
Light houses	89
Minis	90
Palms	91
Boundary	92
Electric lines	93
Boundary pillars	94
Height	95
Beach marks	96
Post office	97
Police station	98
Circuit house	99
Spaced names	100

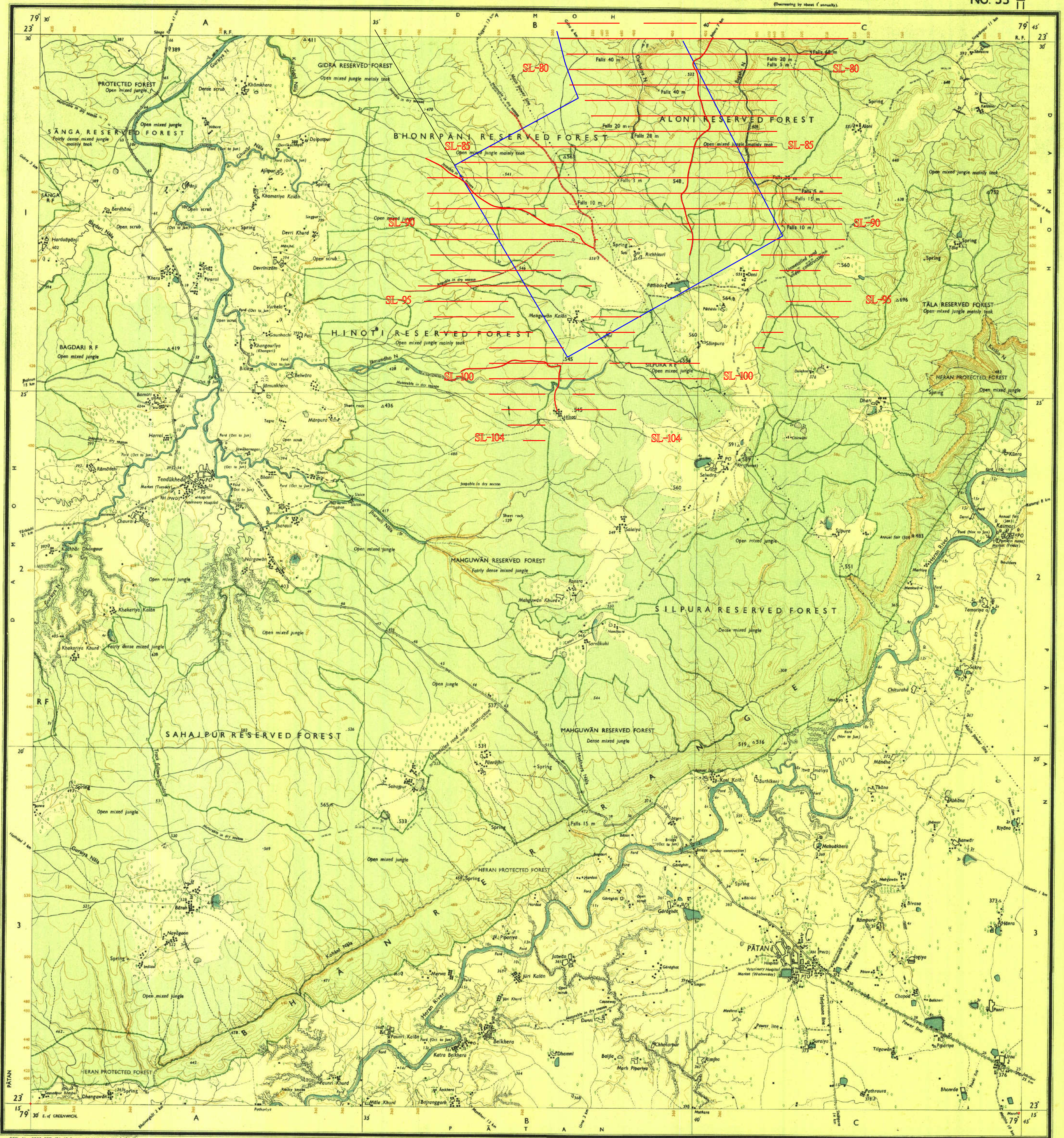
MAIN ROAD  
CONNECTING ROAD IN FOREST AREA

MADHYA PRADESH

DAMOH & JABALPUR DISTRICTS.

Surveyed 1970-72.

Magnetic Variation from True North about 7' West in 1970.  
(Decreasing by about 1' annually).

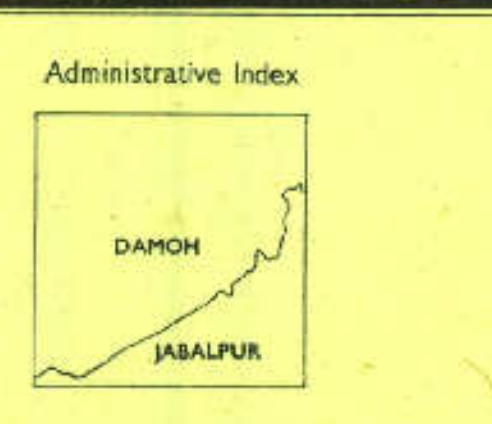


REG. No. 2980 PFD 76 (C.C. 44-133) 834 77-4-06 '81.

Route metalled according to temperature: distance above 30°	30
unmetalled: do. do. do.	30
Cart-track, Pack-track and oxcart Foot-path with bridge	30
Bridges with piers without Causeway Ford or Ferry	30
Streams with track in bed undefined Canal	30
Dams: masonry or rock filled earthen dam	30
River banks: steep steep 3 to 6 metres over 6 metres	30
dry with water channel with island & rocks Tidal river	30
Submerged rocks Shoal Swamp Reeds	30
Wells: hand, windmill, tube-well, Spring Tanks: perennial dry	30
Embankments: road or rail line, Broder ground	30
Railways: broad gauge double-track with station under construction	30
Light railway or tramway Telegraph line Cutting with tunnel	30
Contours with sub-features: Rocky slopes, Cliffs	30
Sand features: beach, sand dunes, sand dunes, sand dunes	30

Index to Sheets

34	35	36	37
38	39	40	41
42	43	44	45
46	47	48	49



Printed at the 104 (IBD) Presses Group at Bikaner or Jaipur.

Towns or Villages: inhabited, deserted, Fort	30
Hulk permanent, temporary, Tower, Antiquities	30
Temple, Chhatra, Church, Mosque, Jagan, Tomb, Graves	30
Lighthouse, Lightship, Buoy, Signal, Lighted, Rock	30
Mine, Vine on trellis, Great Scrub	30
Palms, papyrus, etc., Platanus, Conifer, Bamboo, Other trees	30
Boundary: international	30
state, international, undemarcated	30
district, sub-division, taluk or block, forest	30
Boundary pillars: surveyed, un-surveyed, village, junction	30
Height: triangulated, station, point, approximate	200 200 200
Bench mark: geodetic, tertiary, canal	B.M. 63.3 43.4 3.3
Post office: head post office, Combined office, Police station, P.O.	70 70 70
Buildings: state, treasury, inspection, Mast-house	08 08 08
Circuit house, Camp, ground, Forest: reserved, protected, CH, CC, R.F., P.F.	08 08 08
Spaced names: administrative, locality or tribal	KIKRI NAGA

MAIN ROAD  
CONNECTING ROAD IN FOREST AREA



MADHYA PRADESH

DAHOH, JABALPUR & PANNA DISTRICTS.

Surveyed 1970-71.

Magnetic Variation from True North about 1/2° West in 1975.  
(Decreasing by about 1 minute)

No. 55 M/13



REG. No. 8715 PFD 77 (C.C. 44-133333-984 79-8205-88)

roads, metalled, according to importance; distance stone	29
Cart-track; Pack-track and pass; Footpath with bridge	30
Bridges: with girder, without; Causeway; Ford or Ferry	31
Sillways: with track in bed; underfilled; Canal	32
Dam: masonry or rock-filled earthwork; Weir	33
River bridge: starting; stop; 3 to 6 metres over 8 metres	34
dry with water channel; with flood & rock-fills; (over)	35
Submerged rocks; Shoal; Swamp; Reeds	36
Wells: tank; cistern; Tube-well; Spring; Tank; Perennial; dry	37
Embankments: road or rail; bank; Driven; (ground)	38
Railways: level; grade; double-track with station; under construction	39
Other gauges; etc.; with dist. post; wire; etc.	40
Mineral line or tramway; Telegraph line; Cutting with tunnel	41
Contours: with sub-markers; Rocky slopes; CHHS	42
Sand treasuries (M.S. 24-11-11) and dunes; (M.S. 24-11-11)	43

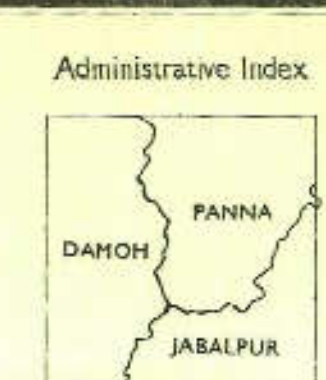
Index to Sheets

51	52	53	54	55
12	13	14	15	16
17	18	19	20	21
22	23	24	25	26



\*Water features are shown in blue where they generally contain water.  
\*Cultivated areas are coloured yellow.  
\*The exterior boundaries of areas of Reserved or Protected Forests are shown by green lines.  
\*In application.

The triangulation heights and contours in this sheet have not been adjusted to the heights of the spirit-levelled bench-marks and may not be strictly in accordance with them.  
The kilometre station numbers along roads and the railway are shown in blue type, e.g. '55' whereas milestone numbers are shown in red type, e.g. '5'.  
The common boundary of the Reserved Forests (Magra) and P.F. (Magra) in square A/1 has not been shown for want of reliable information.  
Forest boundaries lying in Panna District have been surveyed on the ground as pointed out by the local forest officials but have not been verified by the Divisional Forest Officer, Panna Forest Division.



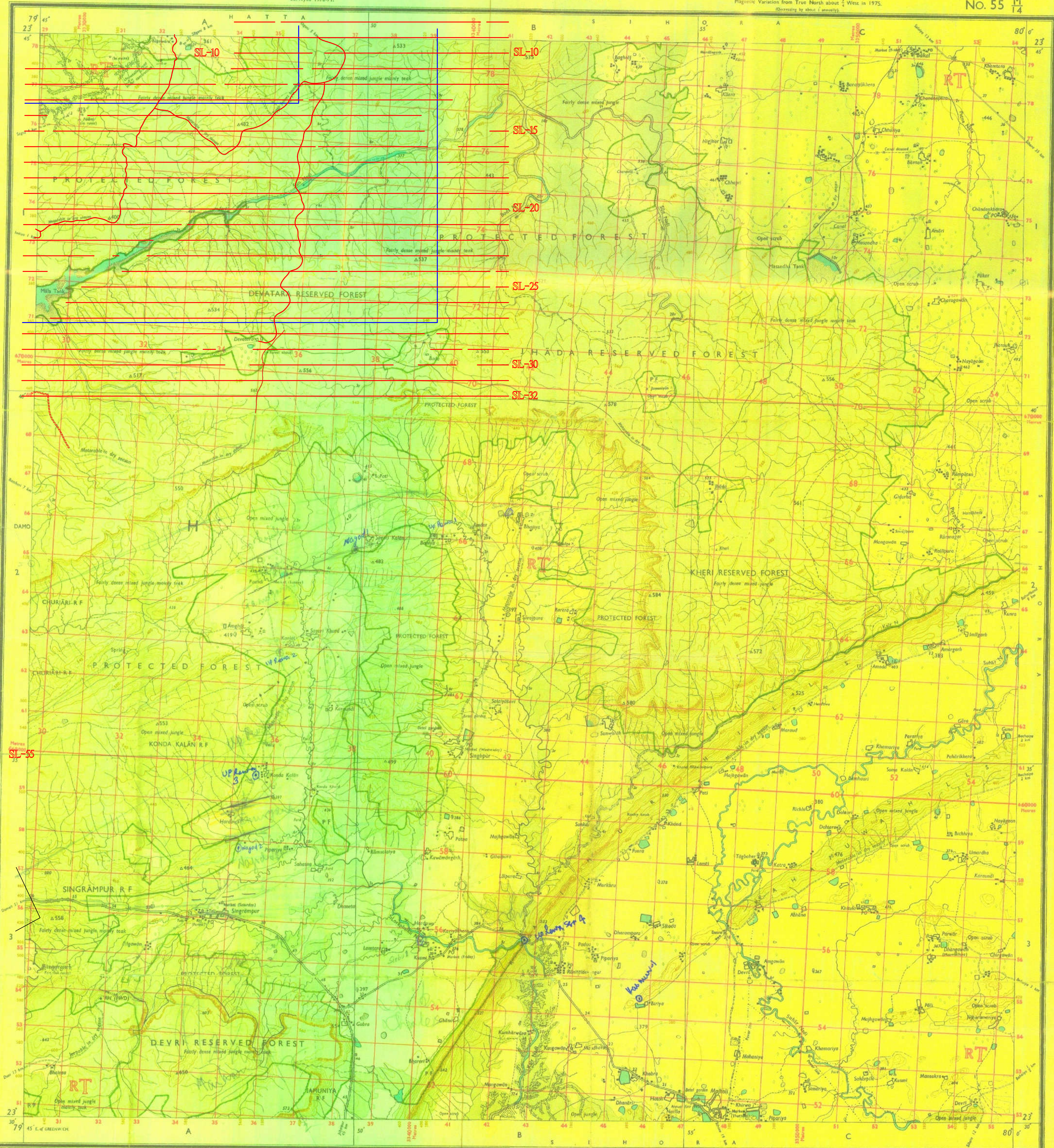
Points of Interest (P.O.I.)

Towns or Villages: inhabited; reserved forest	44
Water: permanent; temporary; Tower; Antiquities	45
Temples; Churches; Mosques; Tanks; Tomb Graves	46
Lighthouses; Lightship; Shipyards; Harbours; Anchorage	47
River: View on locality; River; Bench	48
Palms; palm groves; Pinnacles; Conifer; Bamboo; Other trees	49
Boundary: international	50
State; demarcation; undemarcated	51
district; national; tribal or tribal forest	52
Boundary pillars: survey; unsurveyed; village; village junction	53
Height; triangulation; station; point; approximate	54
Bench-mark; geodetic; ordinary; canal	55
Post office; Telegraph office; Combined office; Police station	56
Bungalows; dak or telegraph; inspection; bus; house	57
Circuit house; Camp; ground; forest; reserved; protected; etc.	58
Spaced name: administrative; locality or tribal	59

REFER TO THIS MAP AS: 1:50,000  
SHEET 55 M/13 FIRST EDITION  
INDIA

MAIN ROAD  
CONNECTING ROAD IN FOREST AREA

GOVERNMENT OF INDIA COPYRIGHT 1977.  
Price: Ten Rupees.



LEG. No. 4283 PFD-77 (C.C. 44-131333) 884 79

roads (metalled, according to importance, distance above indicated, etc. do bridge

Cart-track, Path-track and pass, Foot-path with bridge

Foot-path with pass, Causeway, Ford or Ferry

Stream with track in bed, underfoot, Canal

Jamun, ordinary, rock-lined, concrete-lined, brick-lined

Water tank, overhead, open, 3 to 6 metres, over 6 metres

Well with water (shallow), with windmill, Kunda, Tola, open, covered

Shed, Swamp, Reach

Water head, without, Tube-well, Spring, Tanna, perenniality, intermittent, road or rail track, Broken ground

Other Gauges, etc. do with distance above, do

Right railway or tramway, Telegraph line, Cutting, with tunnel

Contours with subdivisions, Rocky slopes, Cliffs, and features (hills, gullies, etc.) as shown by shading above

Index to Sheets

54°	54° 15'	54° 30'	54° 45'
54° 15'	54° 30'	54° 45'	54° 00'
54° 30'	54° 45'	54° 00'	54° 15'
54° 45'	54° 00'	54° 15'	54° 30'

received from M.A.O.  
R. V. No. R.F. (27/10489/7)  
Date 6/7/84

Published under the direction of Major-General K. L. Khosla, B.Sc., B.E. (Civil), F.I.S., F.I.E., F.I.G.L.M.S.A. (U.S.A.), Surveyor General of India, 1977.

Scale: 1:50,000

HEIGHTS & CONTOURS IN METRES  
CONTOUR INTERVAL 20 METRES

Contours are approximate.  
A relative height, 'R', represents the approximate height in metres between the top and bottom of a steep slope.  
Wooded areas are coloured green. Scattered trees and other vegetation are in green, but prominent surveyed trees are in black.

\*Water features are shown in blue where they generally contain water.  
\*Cultivated areas are coloured yellow.  
The exterior boundaries of areas of Reserved or Protected Forests are shown by green rhombs.

\*Not applicable.

Administrative Index

JABALPUR  
DAMOH

Points on the 1949 (D) Plane (Datum or Survey or Mean)

Temple or Village, unshaded, elevation, 10'	50
Fort, permanent, temporary, Tower, Antiquities	50
Temple, Chhatra, Chattri, Mosque, Jagah, Tomb, Grave, etc.	50
Lighthouse, Lightship, Buoy, Signal, Signal, Anchorage, etc.	50
Water, Mine, or Trench, Grass, Scrub	50
Points, (except other, Plastic, Cones, Bannock, Other trees)	50
Boundary, international	50
State, demarcated, undemarcated	50
Division, sub-division, or taluk, forest	50
Boundary pillars, surveyed, un-surveyed, village, tripitication	50
Height, triangulated, station, (mean, approximate)	200, 200, 200
Bench-mark, geodetic, tertiary, name	BH 633, BM 433, 432
Post office, Telegraph office, Combined office, Police station, P.O., P.T.O., P.S.	70, 70, 70, 70
Bungalow, club or transient, museum, Rest house, etc.	20, 20, 20, 20
Circuit house, Camp, Ground, Forest, reserved, protected, CH, CG, CF, PF	CG, CF, PF
Spotted name, administrative, locality or tribal	KIKRI, NAGA

GRID II A (Metres)  
Grid references are given in hundreds of metres East and North of the south-west corners of the lettered squares; thus the grid reference of a spot is 475 425 (see body of map)

MAIN ROAD  
CONNECTING ROAD IN FOREST AREA

