


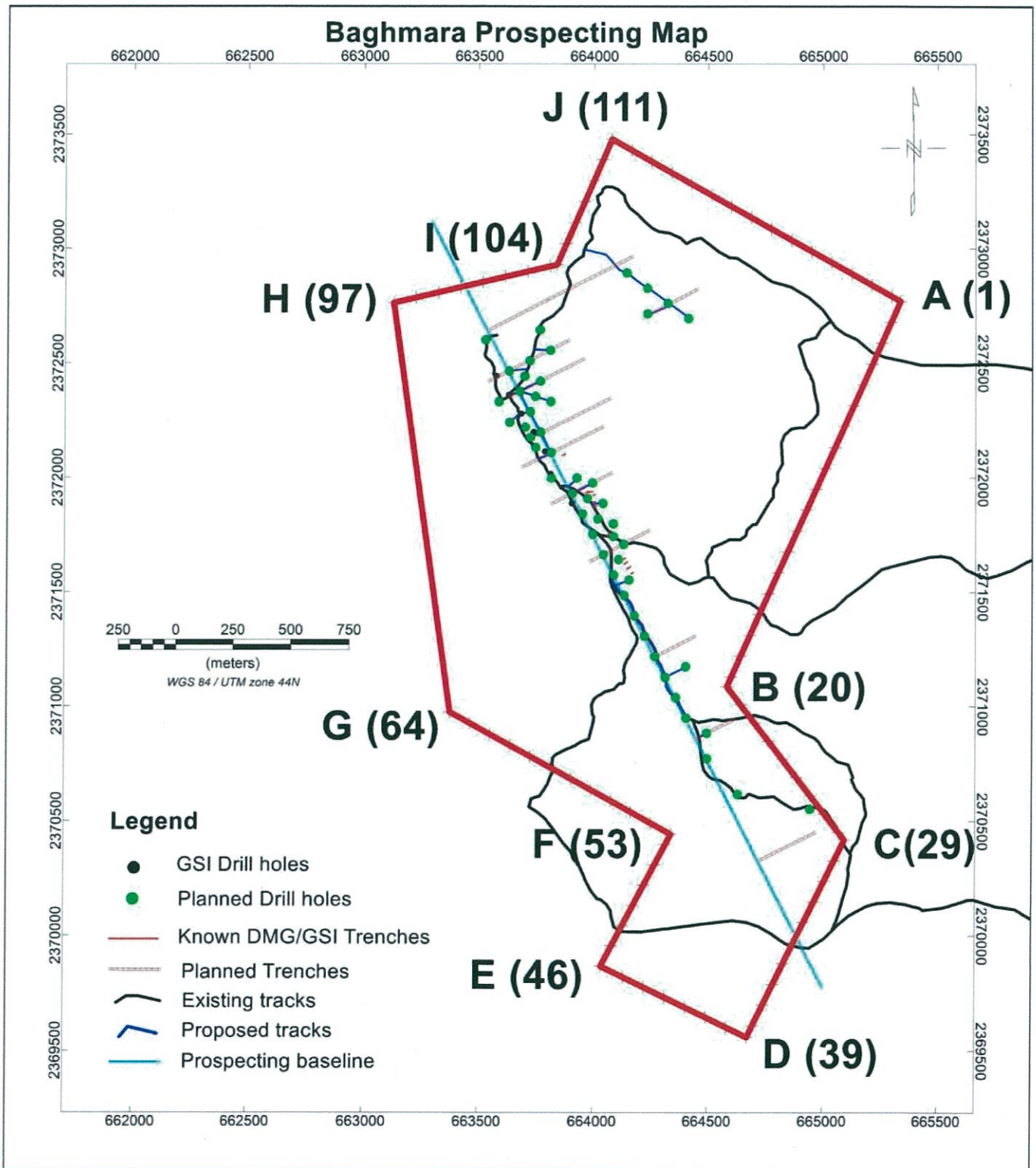
## **Details of Existing Path / Temporary Tracks for Drilling activity**

1. The prospecting block is easily accessible from Baghmara as well as Rajadeori village.
2. All weather metal road connecting Baghmara and Devgaon villages and Forest path from rajadeori village will be used for transporting drill machines & equipment.
3. From Baghmara and Rajadeori village, there are paths exists which is used by villagers and forest people which connects the drilling activity planned area. On map this is shown in black colour.
4. There are 51 borehole locations planned for prospecting and it requires very few new paths making without cutting any trees. On map this is shown as blue lines.
5. All the planned drill holes are in reserve forest marked in green colour.
6. Base line is shown in light green colour.
7. The existing Forest paths and tracks are shown in Google map with pictures.

For Vedanta Limited

  
Shuvrendu Roy Choudhury  
Head Mines

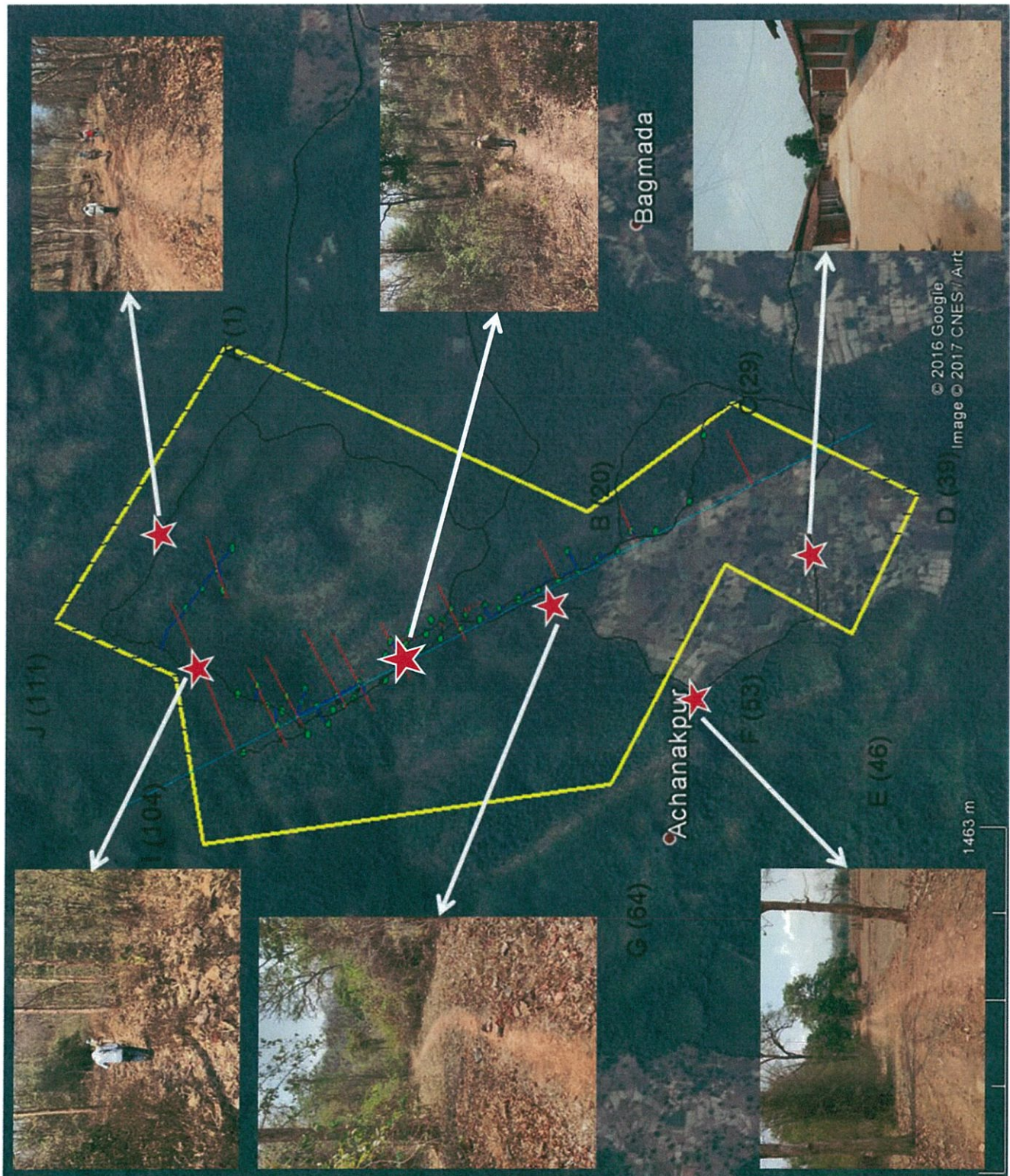
# Baghmara Prospecting Map



For Veganta Limited

Shuvendu Roy Choudhur  
Head Mines

# Baghmara Block access paths & Tracks for Prospecting



For Vedanta Limited

  
Shuvrendu Roy Choudhur  
Head Mines



## List of Equipment



Proposed small vehicle



Proposed water tanker

For Vedanta Limited

  
Shuvrendu Roy Choudhury  
Head Mines