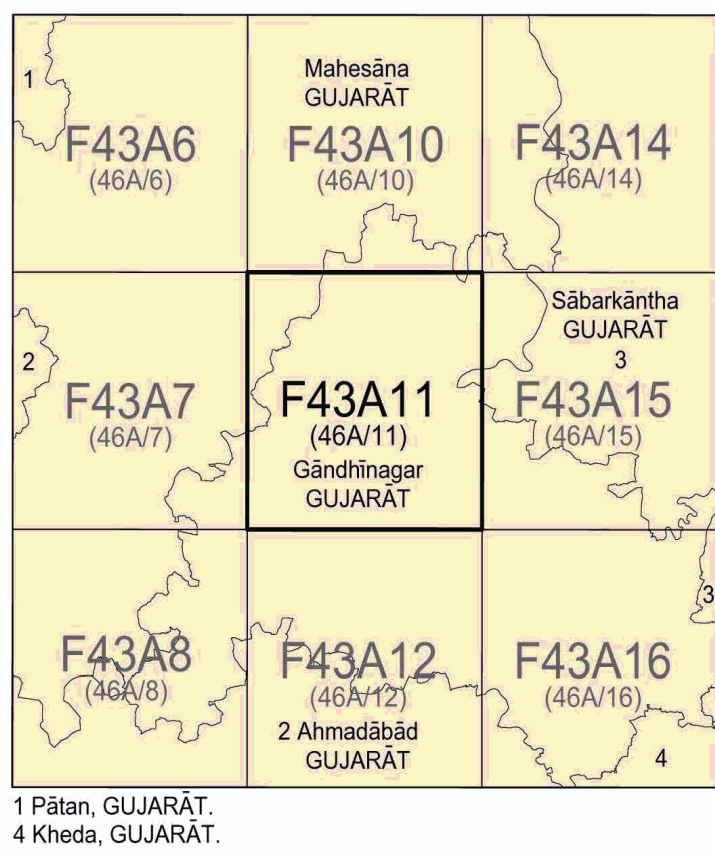




No. F43A11
Scale 1:50,000



भारतीय सर्वेक्षण विभाग SURVEY OF INDIA

1st Edition 2018.

Price : ₹ 118/-

CONVENTIONAL SYMBOLS



REFERENCES

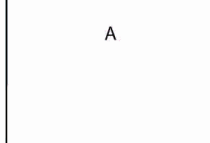
April 8 National Highway No. 6. WESTERN RAILWAY Main line (Meter gauge)

NOTES -

Heights and contours are in metres.
Contours are approximate.
A relative height, as represented by the approximate height, is between the top and bottom of a steep slope.
The interpolated heights and contours in this sheet have not been adjusted to the heights of the spirit levelled bench marks and may not be strictly in accordance with them.
Numerical labels are not shown in the cultural pattern of this sheet. Some have been omitted.
Cadastral features generally follow along cart tracks and field boundaries.
Contours in this sheet are generally not shown in dry season.

COMPILED INDEX

A. Surveyed during 1957-68. Updated for major details during 2005-06



Projection - UTM Datum - WGS 84
Magnetic Variation from True North about 4° West in 2005.
(Decreasing by about 1' annually).



CONTOUR INTERVAL 20 METRES

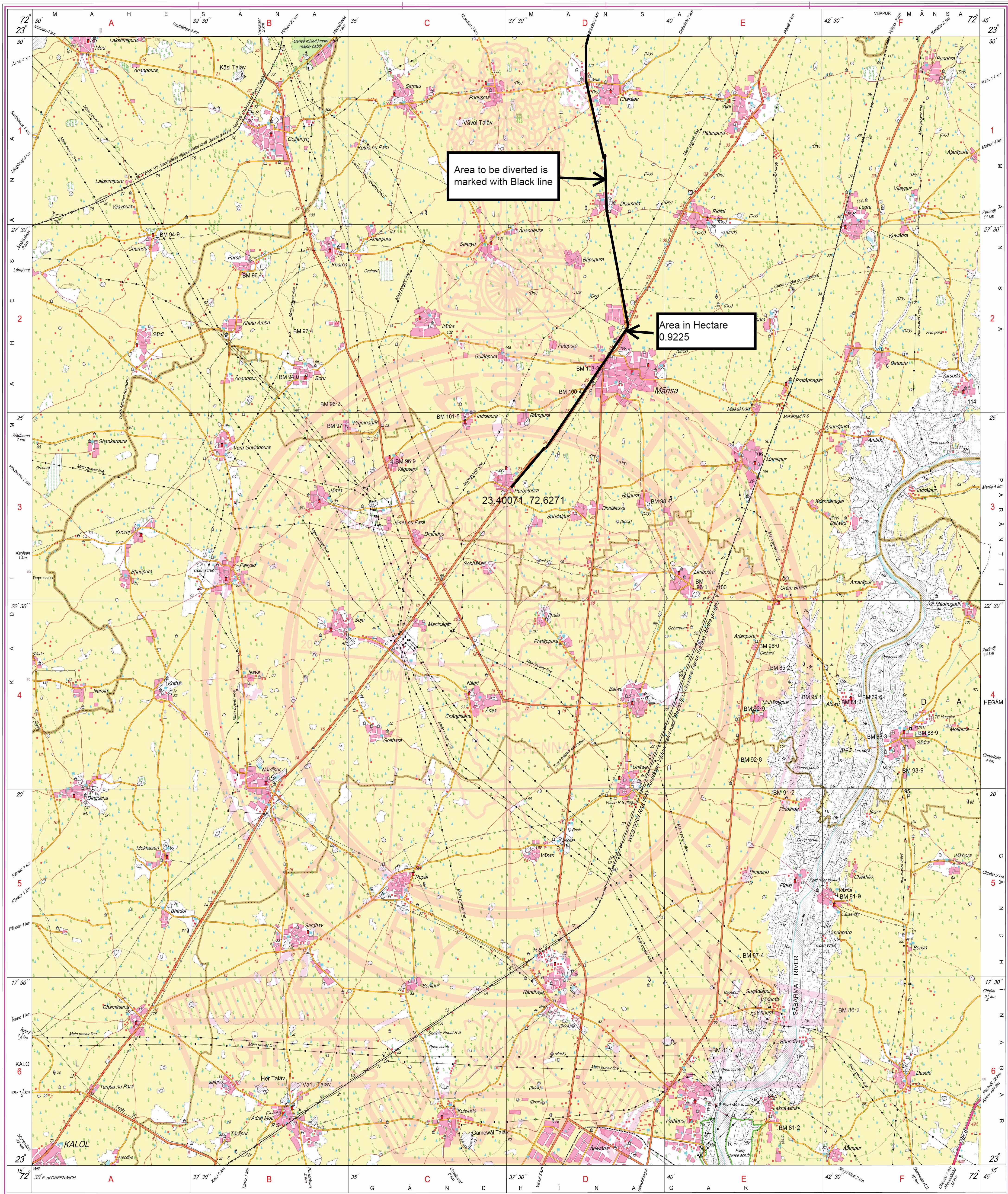
For further details about this map, please contact

Director
Gujarat, Daman & Diu Geo-Spatial Data Centre
Survey of India, Sector 10(A)
Gandhinagar.

WEBSITE : www.surveyofindia.gov.in

Reproduction in whole or part by any means is prohibited
without the written permission of Survey of India, the
National Mapping Agency.

GOVERNMENT OF INDIA COPYRIGHT, 2018.



सर्वेक्षण विभाग : भारत सरकार, दिल्ली
Published under the direction of Lt. Gen. G. S. K. V. Surveyor General of India,
Survey of India, Hishibarkala Estate, Post Box No. 37, Dehra Dun 248001 (Uttarakhand),
Department of Science & Technology, Government of India.

PRINTED AT THE NATIONAL GEOSPATIAL DATA CENTRE OF SURVEY OF INDIA.



No. F43A10
Scale 1:50,000

Pilani GUJARAT F43A5 (46A/5)	F43A9 (46A/9)	F43A13 (46A/13)
Mahesana GUJARAT F43A6 (46A/6)	F43A10 (46A/10)	Sabar Kanhra GUJARAT F43A14 (46A/14)
Gandhinagar GUJARAT F43A7 (46A/7)	F43A11 (46A/11)	F43A15 (46A/15)

1 Ahmedabad, GUJARAT.
2 Banis Kanhra, GUJARAT.

भारतीय सर्वेक्षण विभाग SURVEY OF INDIA

1st Edition 2018. Price : ₹ 118/-

CONVENTIONAL SYMBOLS

Express highway with toll, with bridge, with distance stone	...
Roads, metalled, according to importance	...
Roads, double carriageway, according to importance	...
Unmetalled road, Cart-track, Pack-track with pass, Foot-path	...
Stream, with track in bed, undefined, Canal	...
Dam, masonry or rock-fill, earthen, Well	...
River, dry with water channel, with island & rocks, Tidal river	...
Submerged rocks, Shoal, Swamp, Reeds	...
Wells, lined, unlined, Tube-well, Spring, Tank, perennial, dry	...
Embankments, road or rail, tank, Broken ground	...
Railways, broad gauge, double, single with station, under construction	...
Railways, other gauge, double, single with distance stone, do	...
Mineral line or tramway, Kib, Cutting with tunnel	...
Contours with sub features, Road, slope, Cliff	...
Settlements (1) (2) (3) (4) (5) (6) (7) (8) (9) (10) (11) (12) (13) (14) (15) (16) (17) (18) (19) (20) (21) (22) (23) (24) (25) (26) (27) (28) (29) (30) (31) (32) (33) (34) (35) (36) (37) (38) (39) (40) (41) (42) (43) (44) (45) (46) (47) (48) (49) (50) (51) (52) (53) (54) (55) (56) (57) (58) (59) (60) (61) (62) (63) (64) (65) (66) (67) (68) (69) (70) (71) (72) (73) (74) (75) (76) (77) (78) (79) (80) (81) (82) (83) (84) (85) (86) (87) (88) (89) (90) (91) (92) (93) (94) (95) (96) (97) (98) (99) (100)	...

NOTES :-

Heights are in metres and above Indian mean sea level.
Contours are approximate.
The triangulated heights and contours in this sheet have not been adjusted to the heights of the spirit-levelled bench-marks and may not be strictly in accordance with them.
A relative height, Δ , represents the approximate height, in metres, between the top and bottom of a steep slope.
Cactus hedges generally exist along cart-roads and field bunds.
Tanks, shown dry, in this area usually contain water from July to December.
Tube-wells are numerous throughout the sheet, only the important ones have been shown.
Cart-roads in this sheet, against which there is no descriptive remark, are generally not navigable (four-wheel drive) in dry season.

COMPILATION INDEX

A. Surveyed during 1968-69. Update for major details during 2005-06.

Projection - UTM Datum - WGS 84

Magnetic Variation from True North about $\frac{1}{2}^\circ$ West in 2005.
(Decreasing by about $1'$ annually).

Scale 1:50,000
500 m to 1 cm
2 cm to 1 km

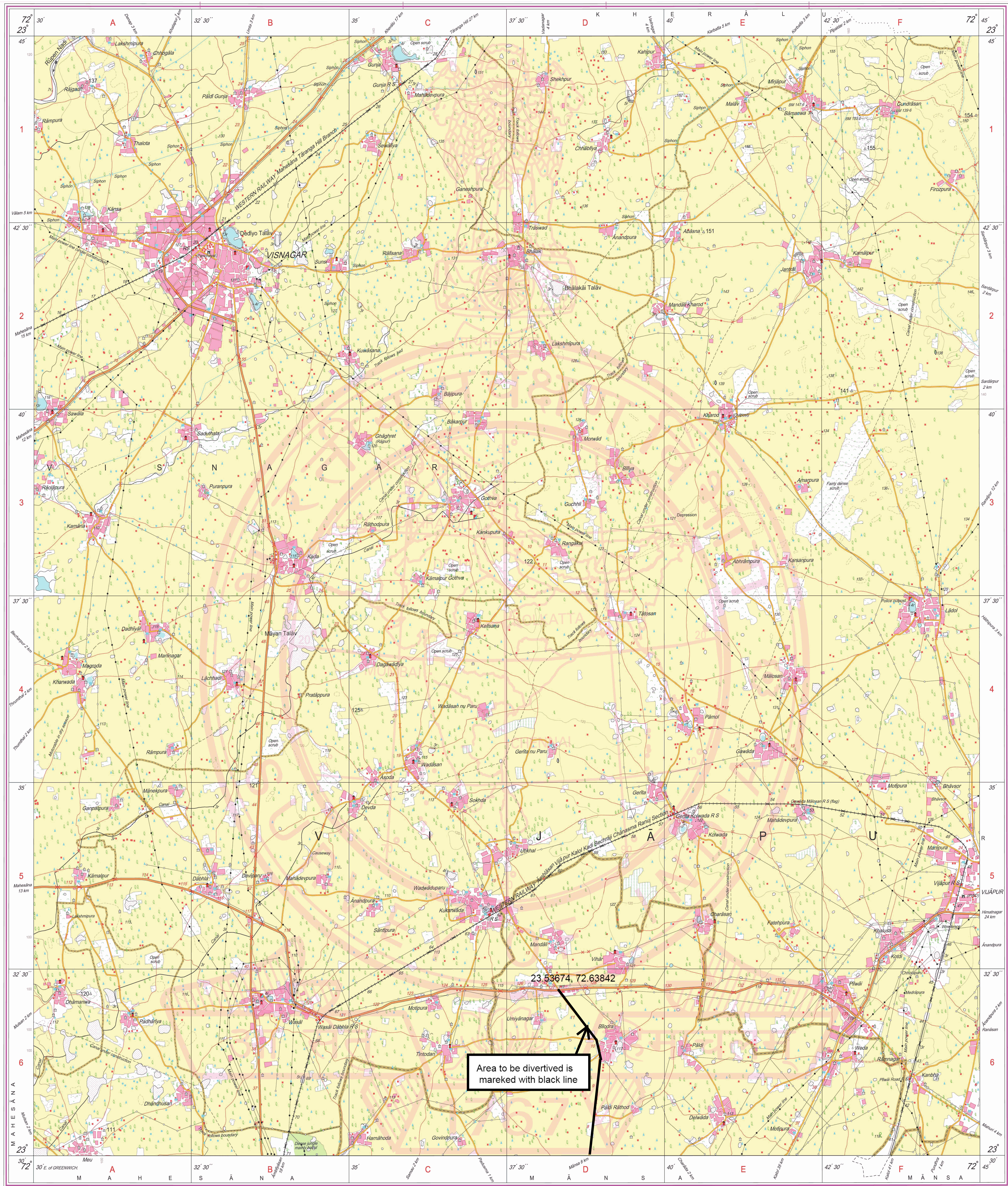
CONTOUR INTERVAL 20 METRES

For further details about the map, please contact
Director
Gujarat, Damani & Diu Geo-Spatial Data Centre
Survey of India, Sector-10 (A)
Gandhinagar.

WEBSITE - www.surveyofindia.gov.in

Reproduction in whole or part by any means is prohibited
without the written permission of Survey of India, the
National Mapping Agency.

GOVERNMENT OF INDIA-COPYRIGHT, 2018.



नकाशे के सम्बन्धित अधिकार सुरक्षित हैं।
Published under the direction of: Lt. Gen Gurnit Kumar, VSM, Surveyor General of India,
Survey of India, Hathi Bunka Estate, Post Box No. 37, Dehra Dun-248001 (Uttarakhand),
Department of Science & Technology, Government of India.

PRINTED AT THE NATIONAL GEOSPATIAL DATA CENTRE OF SURVEY OF INDIA.