



निर्यात के लिए नहीं NOT FOR EXPORT

OPEN SERIES
MAP

No. H44S9

Scale 1:50,000

Bijnor UTTAR PRADESH H44M8 (53K/8)	H44M12 (53K/12)	H44M16 (53K/16)
Jyotiba Phule Nagar UTTAR PRADESH H44S5 (53L/5)	H44S9 (53L/9)	H44S13 (53L/13)
H44S6 (53L/6)	Moradabad UTTAR PRADESH H44S10 (53L/10)	H44S14 (53L/14)

1 Udhamsingh Nagar, UTTARAKHAND.
2 Rampur, UTTAR PRADESH.

भारतीय सर्वेक्षण विभाग

SURVEY OF INDIA

1st Edition 2010.

Price : Rs. 50/-

CONVENTIONAL SYMBOLS

- Express Highway: with toll; with bridge; with distance stone
Roads, marked according to importance
Roads, double carriageway according to importance
Unimproved road. Cart track. Path track with post. Foot path
Stream: with track in bed; unimproved. Canal
River: dry with water channel; with island & rocks. Tidal river
Swampy area. Shrub. Swamp. Reeds
Wells: lined; unlined. Tube-well. Spring. Tanka. Perennial; dry
Embankment: road or rail; bank. Broken ground
Railways, broad gauge: double; single with station; under construction
Railways, other gauges: double; single with distance stone; do
Mineral line or tramway. K.M. Cutting with tunnel
Contours with sub-features. Rocky slopes. Cliffs
Sand features: (Dune, dune-like permanent). (Dune-like, shifting)
Towns or Villages: inhabited; deserted. Fort
Huts: permanent; temporary. Tower. Antenna
Temple. Chhatra. Church. Mosque. Ghat. Tomb. Graves
Lighthouse. Lightship. Buoy: lighted; unlighted. Anchorage
Mine. View on hills. Grass. Scrub
Palms: palm; other. Pinnacles. Coastal. Bamboo. Other trees
Areas: cultivated; wooded. Surveyed trees
Boundary, international
Boundary, district: surveyed; unsurveyed
Boundary, Pillar: surveyed; unsurveyed
Height, triangulation: station; point; approximate
Bench-mark: geodetic; secondary; canal
Post office. Telegraph office. Overhead tank
Rest house or inspection bungalow. Circular house. Police station
Camping ground. Forest: reserved; protected
Special names: administrative; locality or tribal
Hospital. Dispensary. Veterinary: Hospital / Dispensary
Aerodrome: Heliport. Tourist site
Power line: with pylons surveyed; with poles unsurveyed

REFERENCE

NH 24 National Highway No. 24.

NOTES

- Heights are in metres and above Indian mean sea level.
Contours are approximate.
A relative height, e.g., 50, represents the approximate height, in metres, between the top and bottom of a steep slope.
A relative height, e.g., 50, marked along a canal, indicates the height of the top of the canal embankment above the adjacent country.
Tanks, shown in this way, usually contain water from July to December.
Wells and tube-wells are numerous throughout the sheet; only the important ones have been shown.
Unimproved roads in this sheet are generally motorable in dry season.
The kilometre stone numbers along roads, railways and canals are shown in short type, e.g., 5, whereas milestone numbers are shown in upright type, e.g., 5.

COMPILED INDEX

A. Compiled from 1:25,000 Scale Survey 1989-20. Updated for major details during 2005-06.

Projection - UTM Datum - WGS 84

Magnetic Variation from True North about 1° East in 2005.
(Increasing by about 1" annually).

Scale 1:50,000

CONTOUR INTERVAL 10 METRES

For further details about this map, please contact

Additional Surveyor General
Uttarakhand and West Uttar Pradesh Geo-Spatial Data Centre
Survey of India, 17 E.C. Road, Kanpur.
Dehra dūn.

WEBSITE - www.surveyofindia.gov.in

Reproduction in whole or part by any means is prohibited
without the written permission of Survey of India, the
National Mapping Agency.

GOVERNMENT OF INDIA COPYRIGHT, 2010.



REPRODUCTION IN WHOLE OR PART BY ANY MEANS IS PROHIBITED WITHOUT THE WRITTEN PERMISSION OF SURVEY OF INDIA, THE NATIONAL MAPPING AGENCY.

भारत के सर्वेक्षण विभाग के द्वारा प्रकाशित.
Published under the direction of Surveyor General of India,
Survey of India, Haidibarkala Estate, Post Box No. 37, Dehra Dūn - 248001 (Uttarakhand)
Department of Science & Technology, Government of India.

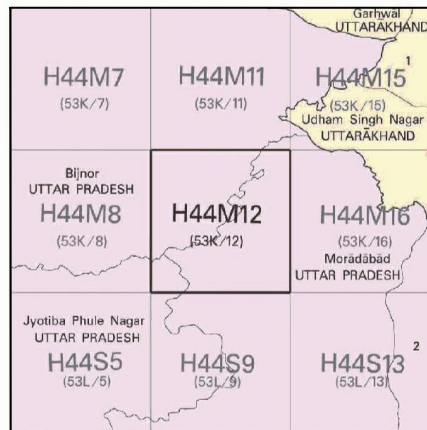
भारत के सर्वेक्षण विभाग के द्वारा प्रकाशित.
Published under the direction of Surveyor General of India,
Survey of India, Haidibarkala Estate, Post Box No. 37, Dehra Dūn - 248001 (Uttarakhand)
Department of Science & Technology, Government of India.

PRINTED AT THE WESTERN PRINTING GROUP OF SURVEY OF INDIA.



No. H44M12

Scale 1:50,000



भारतीय सर्वेक्षण विभाग

SURVEY OF INDIA

1st Edition 2011.

Price: ₹ 70/-

CONVENTIONAL SYMBOLS



REFERENCES

SH 12 State Highway No. 12.

SH 76 State Highway No. 76.

NOTES

Heights are in metres and above Indian mean sea level. Contours are approximate. A relative height, 'x', represents the approximate height, in metres, between the top and bottom of a steep slope. Tanks, shown dry, in this area, usually contain water from July to December. Wells and tubewells are numerous throughout the sheet; only the important ones have been shown. Unsettled roads and cart-tracks in this sheet are generally materials in dry season. Permission to use these along canals is required from irrigation authorities. The area adjoining the Ranganaga River is liable to change owing to continual fluctuation in the course of the river. The milestone numbers along the roads, railway and canals are shown in short type, e.g., 10, whereas milestone numbers are shown in upright type, e.g., 5.

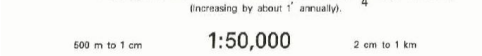
COMPILATION INDEX

A: Surveyed 1966-67. Updated for major details during 2004-05.



Projection - UTM Datum - WGS 84

Magnetic Variation from True North about 3° East in 2005. (Increasing by about 1° annually)



CONTOUR INTERVAL 20 METRES

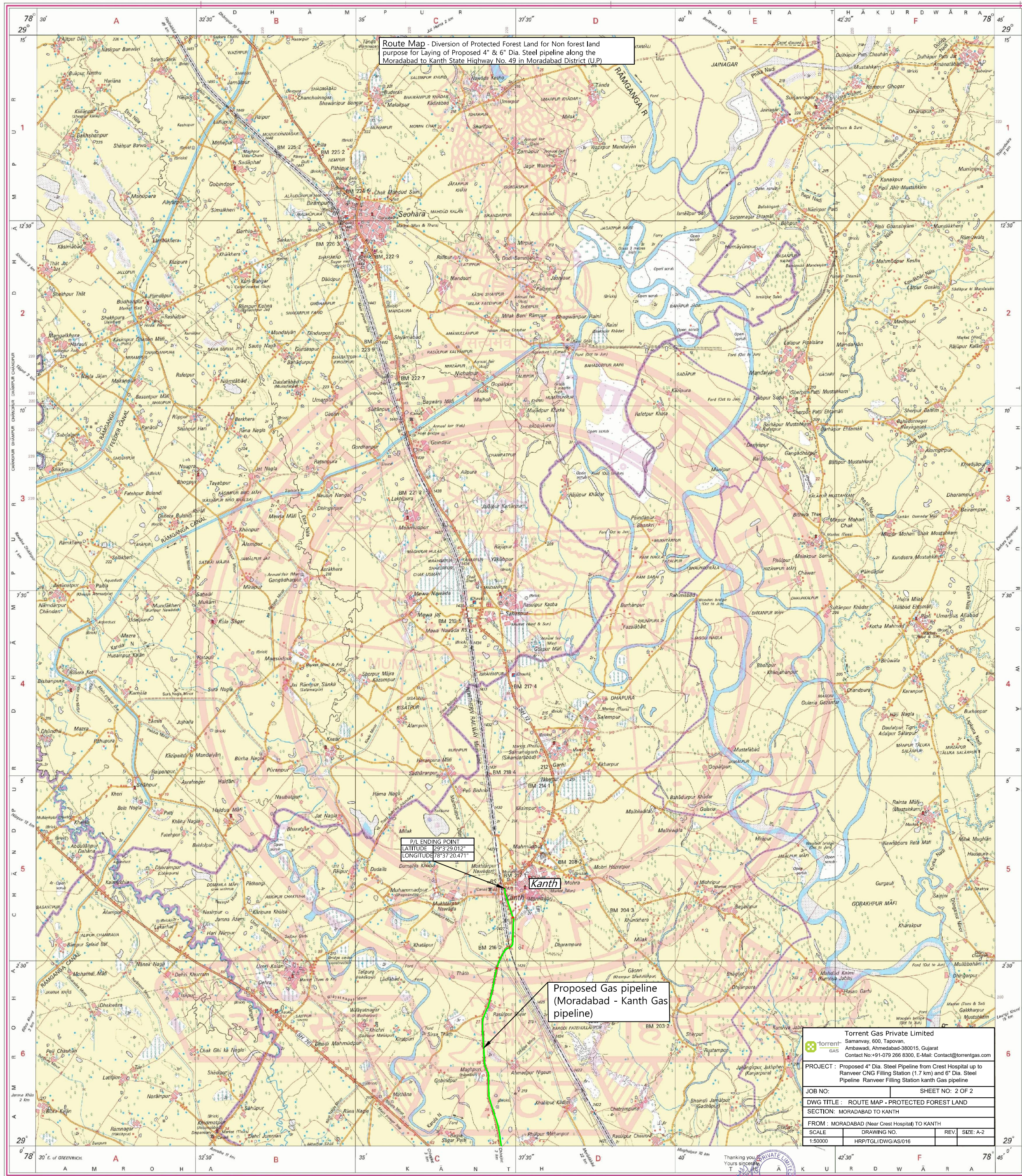
For further details about this map, please contact Director

Uttarakhand and West Uttar Pradesh Geo-Spatial Data Centre Survey of India, 17 E.C. Road, Karanpur Dehra Dun.

WEBSITE - www.surveyofindia.gov.in

Reproduction in whole or part by any means is prohibited without the written permission of Survey of India, the National Mapping Agency.

GOVERNMENT OF INDIA COPYRIGHT, 2011.



Route Map - Diversion of Protected Forest Land for Non forest land purpose for laying of Proposed 4" & 6" Dia. Steel pipeline along the Moradabad to Kanth State Highway No. 49 in Moradabad District (U.P.)

Proposed Gas pipeline (Moradabad - Kanth Gas pipeline)

P/L ENDING POINT
LATITUDE 29°32'20.12"
LONGITUDE 78°37'20.471"

Kanth

Torrent Gas Private Limited
Samarvay, 600, Tapovan,
Ambawadi, Ahmedabad-380015, Gujarat
Contact No: +91-079 266 8300, E-Mail: Contact@torrentgas.com

PROJECT : Proposed 4" Dia. Steel Pipeline from Crest Hospital up to
Ranveer CNG Filling Station (1.7 km) and 6" Dia. Steel
Pipeline Ranveer Filling Station Kanth Gas pipeline

JOB NO.: SHEET NO: 2 OF 2

DWG TITLE : ROUTE MAP - PROTECTED FOREST LAND

SECTION: MORADABAD TO KANTH

FROM : MORADABAD (Near Crest Hospital) TO KANTH

SCALE 1:50000 DRAWING NO. REV. SEE A-2

HRPTGL/DWGAS/016

Thanking you
Yours sincerely
Kantab Patel
Assistant General Manager,
TGPL, Moradabad

PRINTED AT THE WESTERN PRINTING GROUP OF SURVEY OF INDIA.

REG. No. P.D.F.-470/D/11 Uttarakhand & West U.P. GDC-110,2005.

भारत के सर्वेक्षणकर्ता सर्वोत्तम नक्शा, बी.पी. के निवेदन में प्रकाशित.
Published under the direction of Swarna Subba Rao, B.E., Surveyor General of India,
Survey of India, Hathiarkala Estate, Post Box No. 37, Dehra Dun - 248001 (Uttarakhand)
Department of Science & Technology, Government of India.