



1 F45G5 (73B/5) Jashour, CHHATTISGARH	2 F45G13 (73B/13) Rānchi, JHARKHAND
F45G6 (73B/6) Jashour, CHHATTISGARH	F45G10 (73B/10) Simdega, JHARKHAND
	F45G14 (73B/14) Rānchi, JHARKHAND
F45G7 (73B/7) Jashour, CHHATTISGARH	F45G11 (73B/11) Sundargarh, ODISHA
	F45G15 (73B/15) Rānchi, JHARKHAND

1st Edition 2009

Price : Rs. 50/-

[illegible]

#### REFERENCE

heights are in metres and above Indian mean sea level.  
Contours are approximate.  
relative height,  $\Delta$ , represents the approximate height, in metres, between the top and bottom of a steep slope.  
km kilometre  
stone numbers along roads are shown in slant type, e.g., '5' whereas milestone numbers are shown in upright type, e.g., '5'.  
The exterior boundaries of areas of Reserved or Protected Forests are shown by green ribands.

A. Surveyed during 1978-79. Updated for major details from satellite imagery of 2007 during 2008-09.

Magnetic Variation from True North about  $\frac{1}{2}^{\circ}$  West in 2005.

Magnetic Variation from True North about  $\frac{1}{2}^{\circ}$  West in 2005.

1:50.000

For further details about this man, please contact

Director

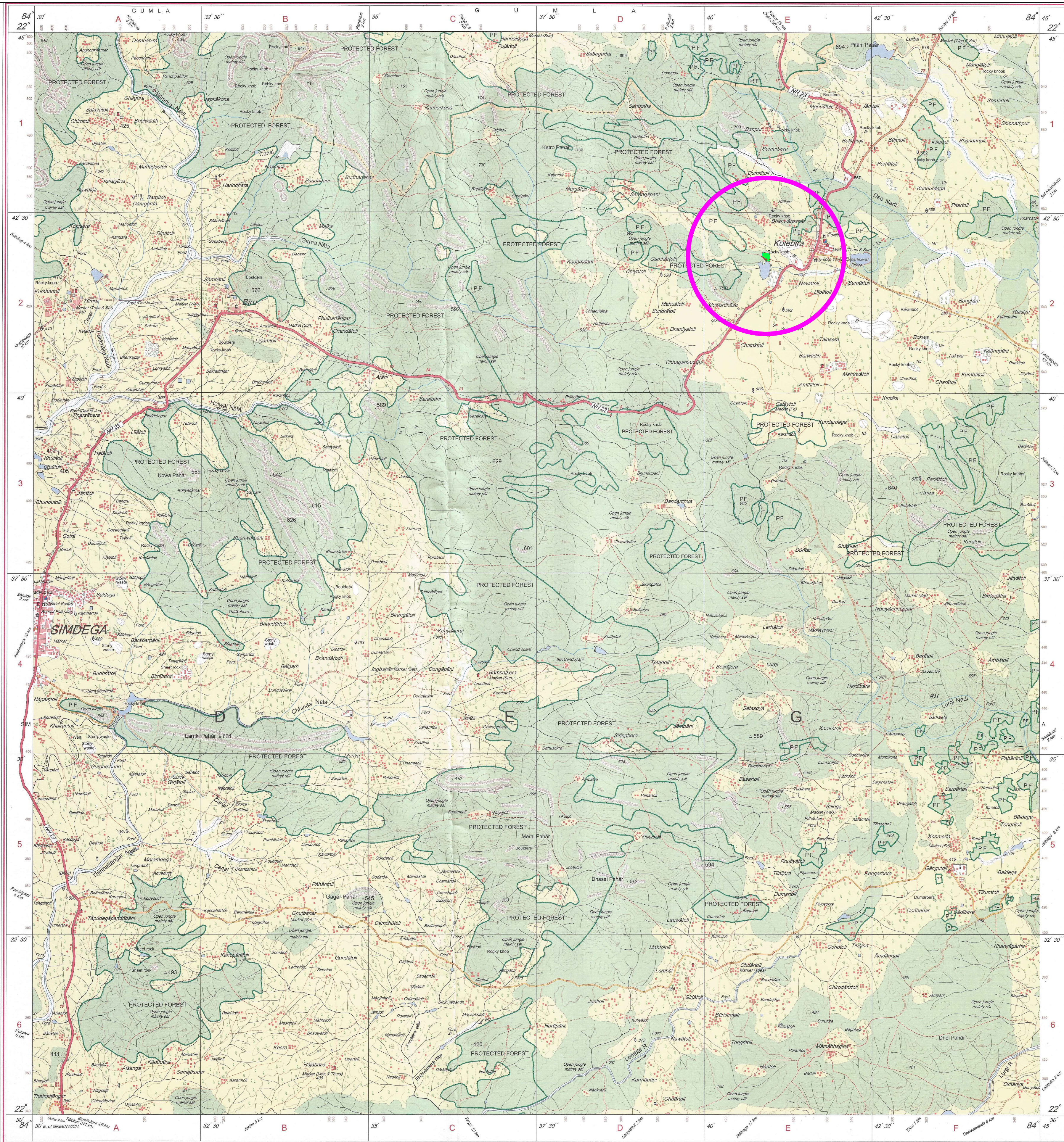
arkhand Geo-Spatial Data Ce

Survey of India, Doranda  
75-11-25-1999

WEBSITE - [www.surveyofindia.gov.in](http://www.surveyofindia.gov.in)

Reproduction in whole or part by any means is prohibited without the written permission of Survey of India, the National Mapping Agency.

GOVERNMENT OF INDIA COPYRIGHT, 2019.



REG. No. 8842-SPG D '09 (Jharkhand GDC-1:50,000)-1015 '10.

भारत के महाराष्ट्र के निदेशन में प्रकाशित,  
Published under the direction of Surveyor General of India,  
Survey of India, Hathi Barkala Estate, Post Box No.37, Dehra Dun-248001 (Uttarakhand)  
Department of Science & Technology, Government of India.

PRINTED AT THE SOUTHERN PRINTING GROUP OF SURVEY OF INDIA