

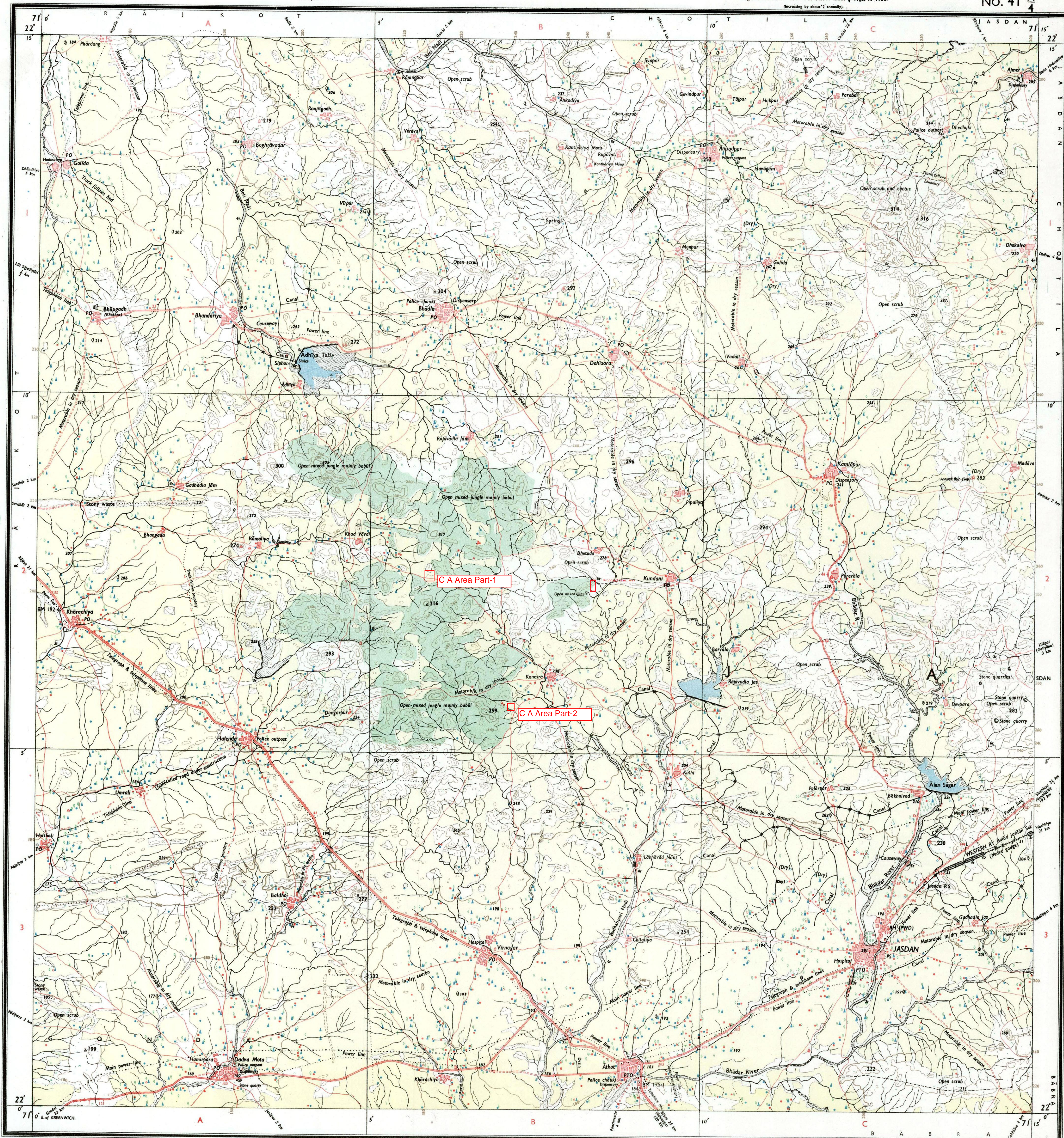
RESTRICTED

FIRST EDITION

INDIA  
REFER TO THIS MAP AS:- I:50,000  
SHEET 41 N/4 FIRST EDITIONAMRELI, RAJKOT AND  
SURENDRANAGAR DISTRICTS.

Surveyed 1966-67.

GUJARAT

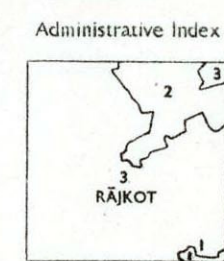
Magnetic Variation from True North about  $\frac{1}{2}^{\circ}$  West in 1965.  
(Increasing by about  $\frac{1}{2}^{\circ}$  annually).No. 41 N  
4

Re. No. 3337 PZD/68/JV C-42/13333-450/75-200477-5106/85-7506/88.

Roads, metalled: according to importance; distance stone...	29
unmetalled; do. do. bridge...	30
Cart-track, pack-track and pass. Foot-path with bridge...	31
Bridges: with piers without. Causeway. Ford or Ferry...	32
Streams: with track in bed undefined. Canal...	33
Dams: masonry or rock-filled; earthen; weir...	34
River banks: shaling; steep, 3 to 6 metres over 6 metres...	35
dry with water channels with island & rocks; tidal river...	36
Submerged rocks. Shoal. Swamp. Reeds...	37
Wells: lined; unlined; tube-well; spring; tanks: perennial; dry...	38
Embankments: road or railway tank. Broken ground...	39
Railways: broad gauge; double; single with station under constr...	40
other (gauge), do. 1 do. with distance station; do...	41
Mineral line, or tramway; telegraph line. Cutting with tunnel...	42
Contours with sub-features. Rocky slopes. Cliffs...	43
Sand features: dunes; sandhills and dunes; sand dunes; shifting dunes...	44

1st Edition 1968.  
(Previous Edition on 1-inch scale: 1st 1945).  
(\*Reprint of part of old style sheet No. 24 Kharbhar, 1886 Edition).

Index to Sheets
41/13 41/14 41/15
41/16 41/17 41/18
41/19 41/20 41/21

Published under the direction of Brigadier J.S. Pantial, M.I.E., Surveyor General of India, 1968.  
1:50,000  
500 m to 1 cm  
2 cm to 1 km  
Metres 1000 500 0 1 2 3 4 5 6 KilometresHEIGHTS & CONTOURS IN METRES  
CONTOUR INTERVAL 20 METRESWater features are shown in blue where they generally contain water.  
Cultivated areas are coloured yellow.  
The exterior boundaries of areas of Reserved or Protected Forests are shown by green ribbons.Contours are approximate.  
A relative height,  $\Delta R$ , represents the approximate height, in metres, between the top and bottom of a steep slope.  
Wooded areas are coloured green. Scattered trees and other vegetation are in green, but prominent surveyed trees are in black.The triangulated heights and contours in this sheet have not been adjusted to the heights of the spirit-levelled bench-marks, and may not be strictly in accordance with them.  
Cart-tracks in this sheet against which there is no descriptive remark, are generally motorable (four-wheel drive) in dry season.  
The kilometre stone numbers along the railway and roads are shown in slant type, e.g., 'S' whereas milestone numbers are shown in upright type, e.g., '5'.  
Tanks, shown dry, in this area usually contain water from July to December.  
In areas, where no tube-well exists, cultivation is periodic and dependent on rainfall.1 AMRELI  
2 SURENDRANAGAR.

Towns or Villages: inhabited; deserted. Fort...	45
Huts: permanent; temporary. Tower. Antiquities...	46
Temple. Chhatra. Church. Mosque. Idgah. Tomb. Graves...	47
Lighthouse. Lightship. Buoy. Lighted. Unlighted. Anchorage...	48
Mine. Wire on wall. Grass. Scrub...	49
Palm. Papyrus. Other. Plantain. Conifer. Bamboo. Other trees...	50
Boundary, international...	51
state: demarcated; undemarcated...	52
districts: subdivided; taluk; taluk forest...	53
Boundary pillars: surveyed; unlocated; village trijunction...	54
Height: triangulated; station; points: approximate...	55
Bench-mark: geodetic; tertiary; canal...	56
Post office. Telegraph office. Combined office. Police station. PO...	57
Bungalows: dks or travellers; inspection. Rest-house...	58
Circuit house. Camping ground. Forest: reserved; protected...	59
Spaced names: administrative locality or tribal...	60

GOVERNMENT OF INDIA COPYRIGHT, 1968.  
Price: Ten Rupees.

RESTRICTED

This map is NOT to be published, copied or reproduced in part or in whole without the permission of the Government of India.

REFER TO THIS MAP AS:- I:50,000  
SHEET 41 N/4 FIRST EDITION

INDIA