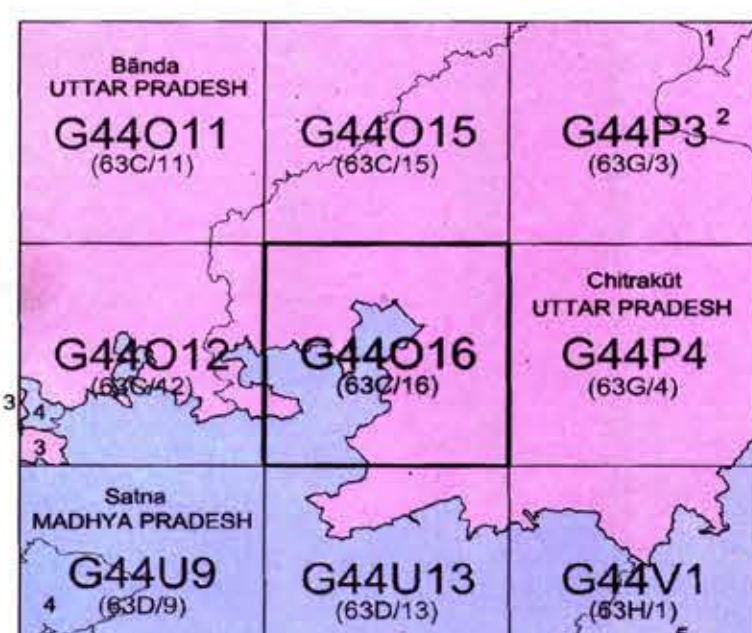


No. G44O16

Scale 1:50,000



1 Fatehpur, UTTAR PRADESH.
2 Kaushambi, UTTAR PRADESH.
3 Banda, UTTAR PRADESH.
4 Panna, MADHYA PRADESH.
5 Rewa, MADHYA PRADESH.

भारतीय सर्वेक्षण विभाग SURVEY OF INDIA

1st Edition 2010.

Price: Rs. 70/-

CONVENTIONAL SYMBOLS



Legend

- Proposed Reserved Forest Land to be diverted
- Non Forest Land

REFERENCE

NH 76 National Highway No. 76

NOTES :-
Heights are in metres and above Indian mean sea level.
Contours are approximate.
A relative height, e.g. 8, represents the approximate height, in metres, between the top and bottom of a steep slope.
The kilometre scale numbers along roads and railways are shown in slant type e.g. '5' whereas milestone numbers are shown in upright type e.g. '5'.
Forest boundaries in this sheet have been surveyed as pointed out by the Forest officials and are not demarcated in some cases.
Tanks, shown dry in this area, usually contain water from July to March.
The common boundaries of the Reserved and Protected Forests have not been shown for want of reliable information.
The state boundary between Madhya Pradesh and Uttar Pradesh States has been surveyed as pointed out by the local officials on the ground but has yet to be verified by the Madhya Pradesh Government.

COMPILATION INDEX

A Surveyed during 1967-68. Updated for major details during 2005-06.

Assistant Engineer
Y.C.U.P. Jal Nigam
Kanwi-Chitrakoot

Projection - UTM Datum - WGS 84

Magnetic Variation from True North about 4° West in 2005.

(increasing by about 1° annually)

1:50,000

500 m to 1 cm

2 cm to 1 km

CONTOUR INTERVAL 20 METRES

For further details about this map, please contact

Director

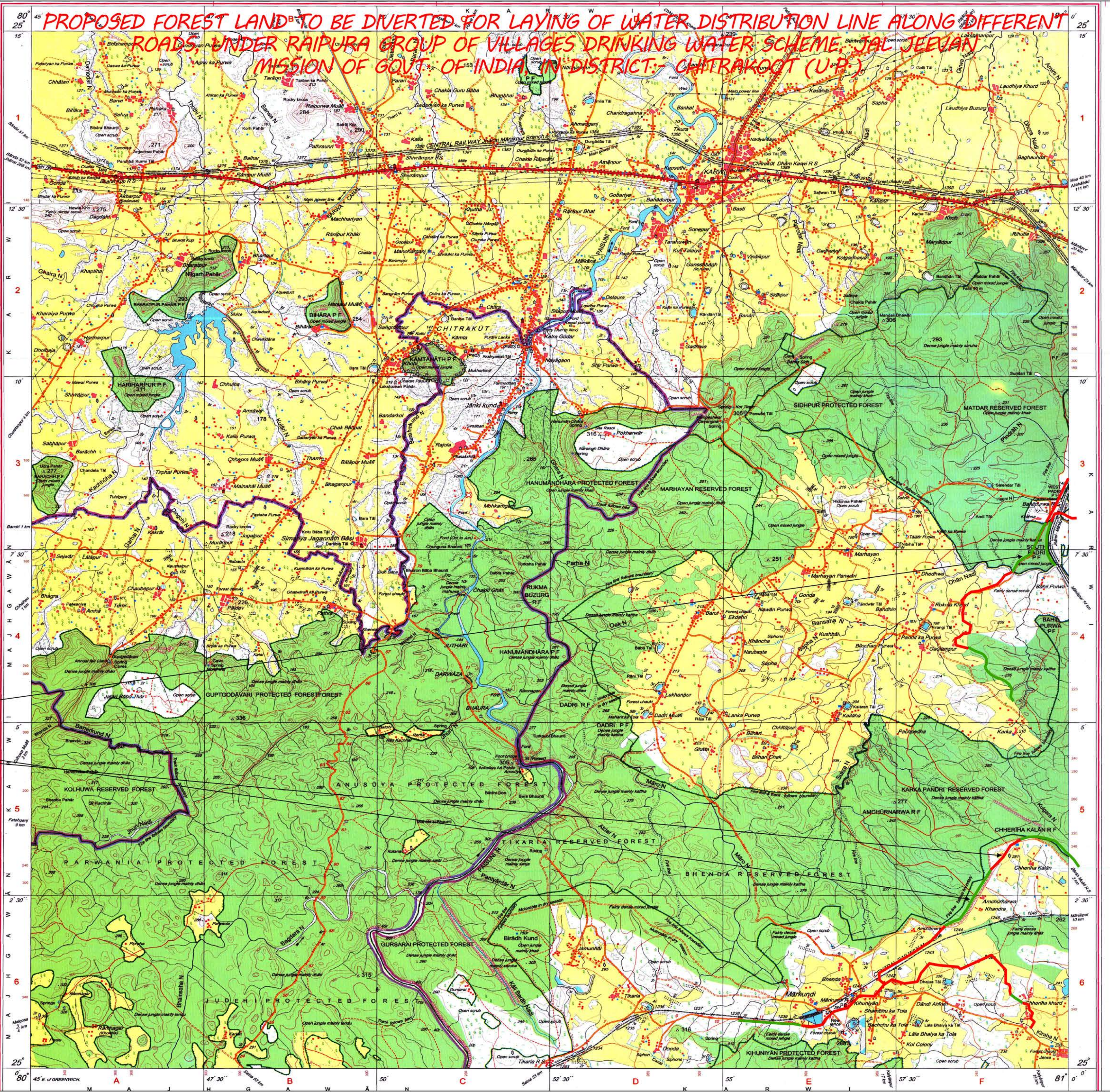
East Uttar Pradesh Geo-Spatial Data Centre

Survey of India

B-2 Block, 2nd Floor, PICUP Bhawan, Gomti Nagar, Lucknow.

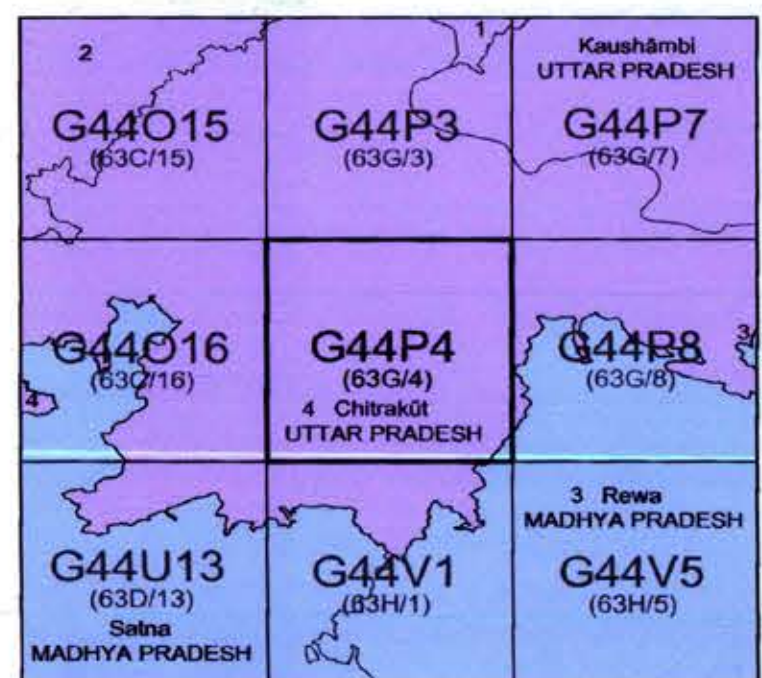
Fax: 0522 - 2720634

WEBSITE - www.surveyofindia.gov.in



No. G44P4

Scale 1:50,000

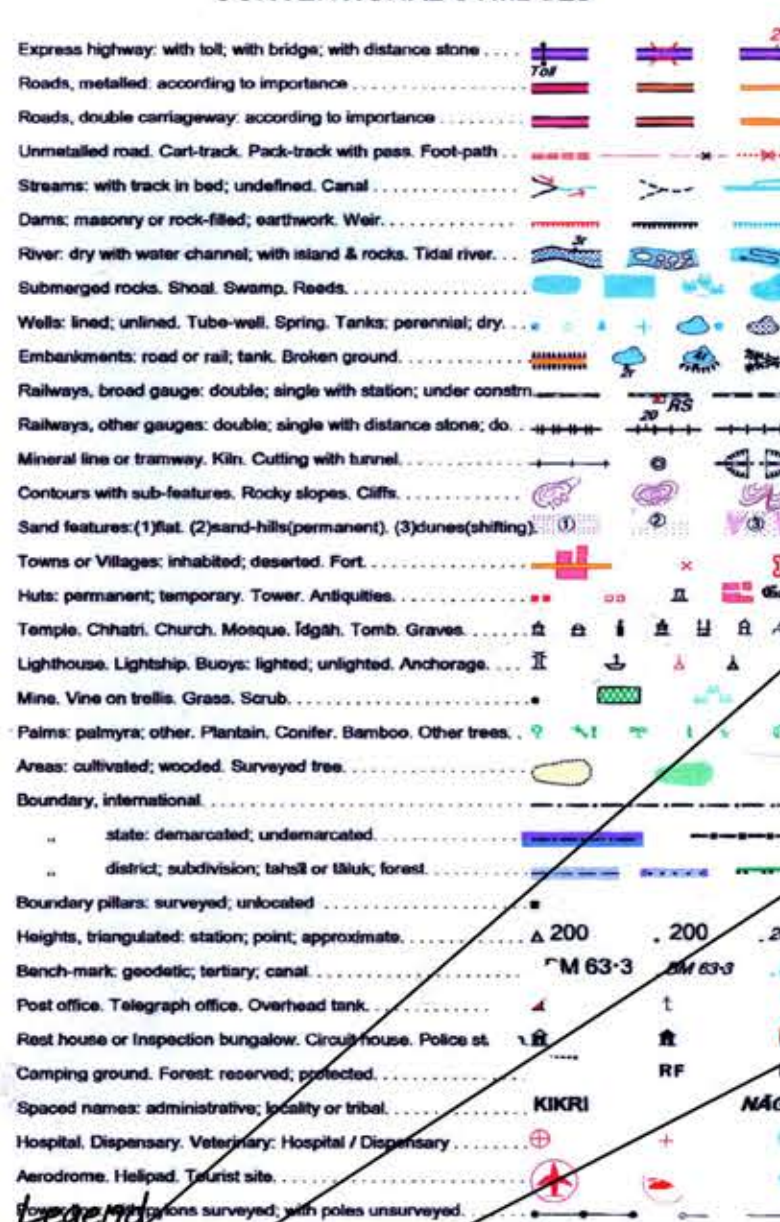


NS 250

भारतीय सर्वेक्षण विभाग SURVEY OF INDIA

1st Edition 2010. PLOTTER PRINT

CONVENTIONAL SYMBOLS



REFERENCE

NH 76 National Highway No. 76

NOTES

Heights are in metres and above Indian mean sea level.
Contours are approximate.
A relative height, e.g. 20, represents the approximate height, in metres, between the top and bottom of a steep slope.
The kilometre scale numbers along railway, roads and canals are shown in slant type, e.g. '5' whereas milestone numbers are shown in upright type e.g. '5'.
All cart-tracks and unmetalled roads in this sheet are generally motorable in dry season. Permissible use of these roads is subject to the permission of the Forest Department.
The common boundaries of the Reserved Forest between Bahil Purwa R.F. & Garh Chapa R.F. Marwar R.F. & Aetha Bareha R.F. Desah R.F. & Kota Kandel R.F. and Aetha Bareha R.F. squares A.4, B.4, C.4, D.4, E.4, F.4 have not been shown for want of reliable information.

COMPILED INDEX

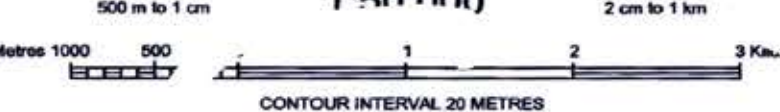
A Modern Survey 1973-74. Updated for major administrative boundaries updated during 2007-08.

Assistant Engineer
J.C.U.P. Jal Nigam
Karni-Chitrakoot

Projection - UTM Datum - WGS 84

Magnetic Variation from True North about 3° West in 2005.
(Decreasing by about 1° annually).

1:50 000



For further details about this map, please contact
Director
East Uttar Pradesh Geo-Spatial Data Centre
Survey of India
B-2 Block, 2nd Floor, PICUP Bhawan, Gomti Nagar, Lucknow.

WEBSITE - www.surveyofindia.gov.in

PROPOSED FOREST LAND TO BE DIVERTED FOR LAYING OF WATER DISTRIBUTION LINE ALONG DIFFERENT ROADS, UNDER RAIPURA GROUP OF VILLAGES DRINKING WATER SCHEME, JAL JEEVAN MISSION OF GOVT. OF INDIA, IN DISTRICT:- CHITRAKOOT (U.P.)

