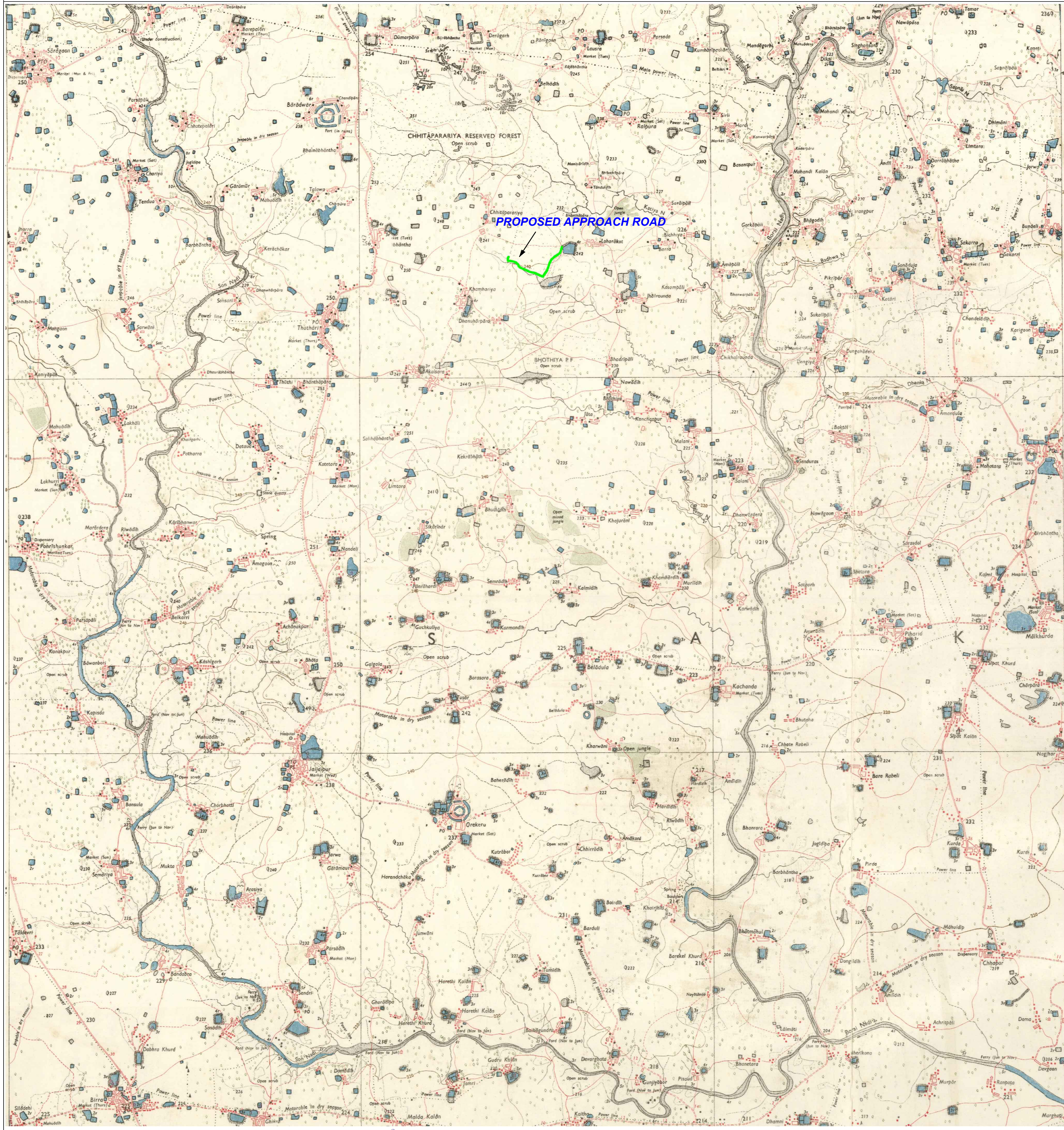


TOPOSHEET MAP OF THE DGPS SURVEYED AREA FOR
FOREST LAND DIVERSION FOR APPROACH ROAD AT VILLAGE- LOHRAKOT, TEHSIL- SAKTI, DISTRICT- JANJGIR-CHAMPA (C.G.)



COORDINATES OF APPROACH ROAD, LOHRKOT, SAKTI, JANJGIR CHAMPA				
POINT ID	Degree, Minute, Second		Easting	UTM Northing
	Latitude	Longitude		
BASE	21° 56' 36.2005"N	82° 52' 07.0801"E	692983.2007	2427737.2108
BP01	21° 56' 41.3340"N	82° 52' 09.9660"E	692805.8341	2427892.9674
BP02	21° 56' 41.2116"N	82° 52' 01.1244"E	692810.4252	2427889.2580
BP03	21° 56' 40.4808"N	82° 52' 00.2712"E	692786.2168	2427866.4820
BP04	21° 56' 40.4016"N	82° 52' 00.4620"E	692791.7214	2427864.1127
BP05	21° 56' 40.1892"N	82° 52' 00.1741"E	692783.5400	2427857.4792
BP06	21° 56' 40.1892"N	82° 52' 00.3864"E	692789.6316	2427857.5534
BP07	21° 56' 39.2784"N	82° 52' 00.2892"E	692787.1837	2427829.5052
BP08	21° 56' 39.2928"N	82° 52' 00.4980"E	692793.1698	2427830.0211
BP09	21° 56' 38.5621"N	82° 52' 00.2352"E	692785.9025	2427807.4548
BP10	21° 56' 38.5728"N	82° 52' 00.4441"E	692791.8931	2427807.8567
BP11	21° 56' 38.1120"N	82° 52' 00.3756"E	692790.0999	2427793.6596
BP12	21° 56' 38.2128"N	82° 52' 00.5592"E	692795.3305	2427796.8241
BP13	21° 56' 37.8924"N	82° 52' 00.6780"E	692798.8595	2427787.0109
BP14	21° 56' 38.1048"N	82° 52' 00.6924"E	692799.1931	2427793.5489
BP15	21° 56' 37.9968"N	82° 52' 00.9301"E	692806.0545	2427790.3101
BP16	21° 56' 38.1912"N	82° 52' 00.9012"E	692805.1522	2427796.2793
BP17	21° 56' 38.0184"N	82° 52' 01.5960"E	692825.1541	2427791.2072
BP18	21° 56' 38.2128"N	82° 52' 01.6104"E	692825.4944	2427797.1916
BP19	21° 56' 37.6802"N	82° 52' 04.2708"E	692902.0336	2427781.7407
BP20	21° 56' 37.8708"N	82° 52' 04.3068"E	692902.9952	2427787.6152
BP21	21° 56' 37.1184"N	82° 52' 06.4632"E	692965.1548	2427765.2273
BP22	21° 56' 37.2984"N	82° 52' 06.5388"E	692967.2566	2427770.7901
BP23	21° 56' 36.7404"N	82° 52' 07.3056"E	692989.4691	2427753.8955
BP24	21° 56' 36.8916"N	82° 52' 07.4424"E	692993.3378	2427758.5940
BP25	21° 56' 36.2472"N	82° 52' 07.5648"E	692997.0918	2427738.8165
BP26	21° 56' 36.3696"N	82° 52' 07.7304"E	693001.7977	2427742.6392
BP27	21° 56' 36.0852"N	82° 52' 07.8781"E	693006.1429	2427733.9434
BP28	21° 56' 36.2472"N	82° 52' 07.9932"E	693009.3846	2427738.9664
BP29	21° 56' 35.7396"N	82° 52' 08.3641"E	693020.2182	2427723.4835
BP30	21° 56' 35.8801"N	82° 52' 08.5116"E	693024.3978	2427727.8568
BP31	21° 56' 35.1672"N	82° 52' 08.9184"E	693036.3383	2427706.0717
BP32	21° 56' 35.2752"N	82° 52' 09.0948"E	693041.3595	2427709.4553
BP33	21° 56' 34.7676"N	82° 52' 09.1704"E	693043.7193	2427693.8691
BP34	21° 56' 34.8360"N	82° 52' 09.3684"E	693049.3752	2427696.0422
BP35	21° 56' 33.8028"N	82° 52' 09.5088"E	693053.7916	2427664.3124
BP36	21° 56' 33.8964"N	82° 52' 09.6960"E	693059.1282	2427667.2569
BP37	21° 56' 32.9604"N	82° 52' 10.5024"E	693082.6190	2427638.7498
BP38	21° 56' 33.1152"N	82° 52' 10.6321"E	693086.2829	2427643.5566
BP39	21° 56' 32.2728"N	82° 52' 11.7192"E	693117.7932	2427618.0267
BP40	21° 56' 32.4564"N	82° 52' 11.7948"E	693119.8937	2427623.7003
BP41	21° 56' 31.8840"N	82° 52' 12.9396"E	693152.9587	2427606.4954
BP42	21° 56' 32.0676"N	82° 52' 13.0116"E	693154.9558	2427612.1677
BP43	21° 56' 30.8581"N	82° 52' 15.3264"E	693221.8334	2427575.7771
BP44	21° 56' 31.0308"N	82° 52' 15.4128"E	693224.2479	2427581.1189
BP45	21° 56' 29.7312"N	82° 52' 17.5944"E	693287.3374	2427541.9104
BP46	21° 56' 29.9041"N	82° 52' 17.6916"E	693290.0617	2427547.2627
BP47	21° 56' 29.0364"N	82° 52' 19.4664"E	693341.3160	2427521.1958
BP48	21° 56' 29.2236"N	82° 52' 19.5241"E	693342.9016	2427526.9739
BP49	21° 56' 28.6044"N	82° 52' 21.1008"E	693388.3780	2427508.4813
BP50	21° 56' 28.7952"N	82° 52' 21.1476"E	693389.6493	2427514.3663
BP51	21° 56' 28.4676"N	82° 52' 22.4652"E	693427.5814	2427504.7520
BP52	21° 56' 28.6620"N	82° 52' 22.4940"E	693428.3347	2427510.7414
BP53	21° 56' 28.3524"N	82° 52' 23.0268"E	693443.7400	2427501.4056
BP54	21° 56' 28.5360"N	82° 52' 23.0988"E	693445.7371	2427507.0780
BP55	21° 56' 28.2372"N	82° 52' 23.3220"E	693452.2542	2427497.9658
BP56	21° 56' 28.4136"N	82° 52' 23.4084"E	693454.6672	2427503.4218
BP57	21° 56' 27.6936"N	82° 52' 24.3876"E	693483.0363	2427481.6196
BP58	21° 56' 27.8628"N	82° 52' 24.4884"E	693485.8652	2427486.8991
BP59	21° 56' 26.7684"N	82° 52' 26.4504"E	693542.5772	2427453.8860
BP60	21° 56' 26.9412"N	82° 52' 26.5368"E	693544.9915	2427459.2313
BP61	21° 56' 25.9332"N	82° 52' 28.2576"E	693594.7498	2427428.8311
BP62	21° 56' 26.1168"N	82° 52' 28.3261"E	693596.6466	2427434.5023
BP63	21° 56' 25.4401"N	82° 52' 29.8561"E	693640.8054	2427414.2257
BP64	21° 56' 25.6308"N	82° 52' 29.9028"E	693642.0735	2427420.1074
BP65	21° 56' 25.5516"N	82° 52' 30.3132"E	693653.8799	2427417.8154
BP66	21° 56' 25.6741"N	82° 52' 30.1440"E	693648.9786	2427421.5241
BP67	21° 56' 27.4812"N	82° 52' 31.4256"E	693685.0748	2427477.5562
BP68	21° 56' 27.5820"N	82° 52' 31.2492"E	693679.9750	2427480.5947
BP69	21° 56' 30.4584"N	82° 52' 33.7296"E	693750.0684	2427569.9375
BP70	21° 56' 30.5484"N	82° 52' 33.5461"E	693744.7691	2427572.6413
BP71	21° 56' 36.1716"N	82° 52' 35.7528"E	693805.9732	2427746.3740
BP72	21° 56' 36.2364"N	82° 52' 35.5548"E	693800.2672	2427748.2976
BP73	21° 56' 39.0876"N	82° 52' 37.4988"E	693854.9762	2427836.6775
BP74	21° 56' 39.2101"N	82° 52' 37.3332"E	693850.1782	2427840.3874
BP75	21° 56' 41.6040"N	82° 52' 40.5228"E	693940.8010	2427915.1396
BP76	21° 56' 41.7624"N	82° 52' 40.4004"E	693937.2291	2427919.9686
BP77	21° 56' 44.4948"N	82° 52' 44.7960"E	694062.3291	2428005.5575
BP78	21° 56' 44.5992"N	82° 52' 44.6196"E	694057.2280	2428008.7066
BP79	21° 56' 49.1928"N	82° 52' 46.2576"E	694102.4968	2428150.5725
BP80	21° 56' 49.2432"N	82° 52' 46.0560"E	694096.6930	2428152.0517
CP01	21° 57' 02.8212"N	82° 52' 07.8801"E	692996.1710	2428556.2844
CP02	21° 57' 15.8803"N	82° 51' 44.1220"E	692309.5889	2428949.6514

MAP LEGEND

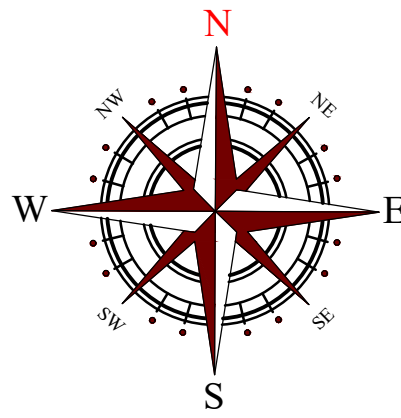
 PROPOSED APPROACH ROAD

APPLICANT

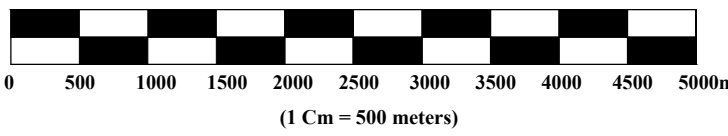


M/S. GUPTA STONE MINES
NEAR AGRASEN CHOWK, MAIN ROAD, BILHA,
DIST-BILASPUR (C.G.) 495224.

MAP NO. - 3



Scale 1:50,000



जानगीर-चाम्पा
जानगीर-चाम्पा




जानगीर-चाम्पा
जानगीर-चाम्पा

Towns or Villages: inhabited, deserted, Fort	●
Temples: religious, secular, Jain, Buddhist, Christian, Muslim, etc.	■
Light house, Lighthouse, Buoy, Lighted and signal Anchorage	▲
Mine, Vene on surface, Grass, Scrub	■
Palms, water, water, Plantain, Coffee, Bamboo, Other trees, etc.	■
Boundary: international	—
State demarcation: undemarcated	—
District: sub-division, taluk or Taluk Forest	—
Boundary pillars: surveyed, unsurveyed, village, village	—
Height: measured, estimated, mean, approximate	—
Bench-mark: geodetic, tertiary, mean	—
Post office, Telegraph office, Combined office, Police station, P.O.	—
Headquarters, administrative, military, etc.	—
Circuit house, Camp, ground, Forest, reserved, protected, etc.	—
Spaced names: administrative, locality or tribal	—

LAND DETAIL

TYPE OF LAND - RESERVE FOREST LAND
FOREST DIVISION - JANJGIR-CHAMPA
FOREST RANGE - SAKTI
VILLAGE - LOHRKOT
COMP NO. - 44
TOTAL SURVEYED AREA - 1.18 HA.
DATE OF SURVEY - 24/07/2021

SURVEYED BY,


NARHARI JAISWAL
(SURVEYOR)

AVI CONSULTANCY SERVICES
34/945, Dr. RAJENDRA NAGAR, NEAR GOVARDHAN CHOWK,
RAIPUR - 492001 (C.G.)
Email - avi_csrrp@rediffmail.com

