

# Construction of four laning of Rajauli - Bakhtiyarpur Section from Km 47+723 to Km 54+405 of NH-31 Package-1, Nawada District in the state of Bihar


**OPEN SERIES MAP**  
**No. G45T10**  
 Scale 1:50,000

G45T5 (72H5)	G45T9 (72H9)	G45T13 (72H13)
G45T6 (72H6)	<b>G45T10 (72H10)</b>	G45T14 (72H14)
G45T7 (72H7)	G45T11 (72H11)	G45T15 (72H15)

1 Lakshari, BHR  
 2 Sheikhpura, BHR  
 3 Nanda, BHR  
 4 Chitra, JH-RHAND

भारतीय सर्वेक्षण विभाग  
**SURVEY OF INDIA**  
 1st Edition 2010. Price: Rs. 50/-

**CONVENTIONAL SYMBOLS**

- Express Highway with toll, with bridge, with distance stone
- Roads, metalled according to importance
- Roads, oxide concrete, according to importance
- Unmetalled Road, metalled with grass, Forest
- Dam, masonry or rock-filled, with spillway
- Dam, masonry or rock-filled, without spillway
- River, dry with water channel, with island & rocks, Total cover
- Submerged rocks, Shoal, Swamp, Floods
- Well, head, unwell, Tapped, Spring, Tidal, perennial, dry
- Entrenchment, road or rail, Bank, Broken ground
- Railway, broad gauge, double, single with station, under construction
- Railway, other gauges, double, single with distance stone, etc.
- Mine, line or battery, Kin, Cutting with tunnel
- Contour with spot height, Rocky slope, Cliff
- Sand features (Bar, Channel, hillock, etc.)
- Towns or Villages inhabited, deserted, Fort
- Hut, permanent, temporary, Tower, Antiquities
- Temple, Church, Mosque, Kijah, Tomb, Graves
- Light-house, Lighthouse, Buoy, Beacon, Anchorage
- Mine, Vene on bank, Open, Sink
- Palm, palmyra, other, Paras, Conifer, Bamboo, Other trees
- Area, cultivated, wooded, Surveyed trees
- Boundary, international
- State, demarcated, undemarcated
- district, subdivision, taluk, block, forest
- Boundary pillars, surveyed, unlocated
- Heights, triangulation station, spot, approximate
- Benchmark, geodetic, military, casual
- Post office, Telegraph office, Post office, Police station
- First house or inspection bungalow, Check house, Police station
- Camping ground, Forest reserved, protected
- Sanctuary, administrative, locality or tribal
- Hospital, Dispensary, Veterinary Hospital, Dispensary
- Sanctuary, Wildlife, Tourist site
- Power line, with pylons surveyed, with poles unsurveyed

**REFERENCE**

APJ, National Highway No. 31

**NOTES**

- Heights are in metres and above Indian mean sea level.
- Contours are approximate.
- A height,  $\Delta$ , represents the approximate height, in metres, between the top and bottom of a slope.
- Tanks, shown  $\Delta$ , in this area usually contain water from July to December.
- Wells and Tubs, wells are indicated throughout the sheet, only the important ones have been shown.
- The kilometre scale numbers along roads are shown in solid type, e.g., 10, whereas milestone numbers are shown in script type, e.g., 10.
- The official boundaries of Reserved/Protected Forests in this sheet have not been shown for want of reliable information.
- The sheet has been compiled from 1:25,000 scale survey.
- Some of the blocks and paths in this sheet have been incorporated as a result of verification survey carried out during 1997.

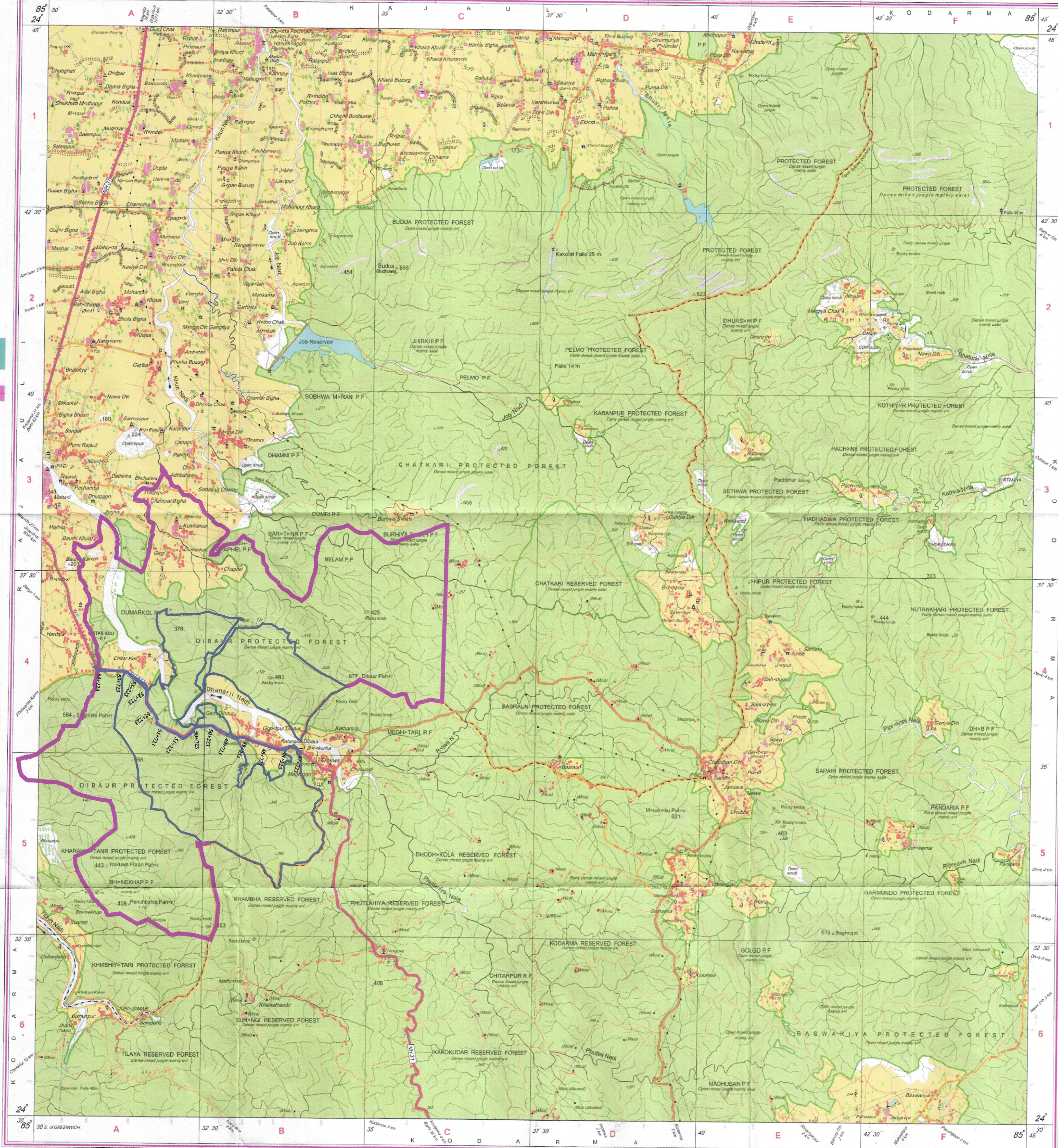
**COMPILED INDEX**

A	Surveyed during 1977-78. Updated for major details during 2006-07.
---	--




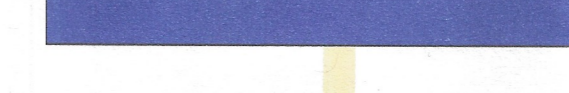
Projection - UTM Datum - WGS 84  
 Magnetic Variation from True North about 10° West in 2005.  
 (Decreasing by about 1' annually)  
**1:50,000**  
 500 m to 1 km  
 2 km to 1 km  
 1:50,000  
 CONTOUR INTERVAL 20 METRES

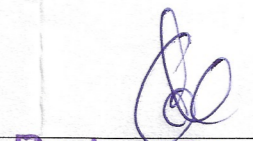
For further details about this map, please contact  
 Director  
 Bihar Geo-Spatial Data Centre  
 Survey of India, 164, Sheikhpura House, Sheikhpura  
 Patna.

WEBSITE - www.surveyofindia.gov.in  
 Reproduction in whole or part by any means is prohibited  
 without the written permission of Survey of India, the  
 National Mapping Agency.



## Legend

-  Eco Sensitive Zone
-  Wildlife Sanctuary
-  PROW
-  Center Line

  
 Project Director  
 NHAI, PIU, Patna-II