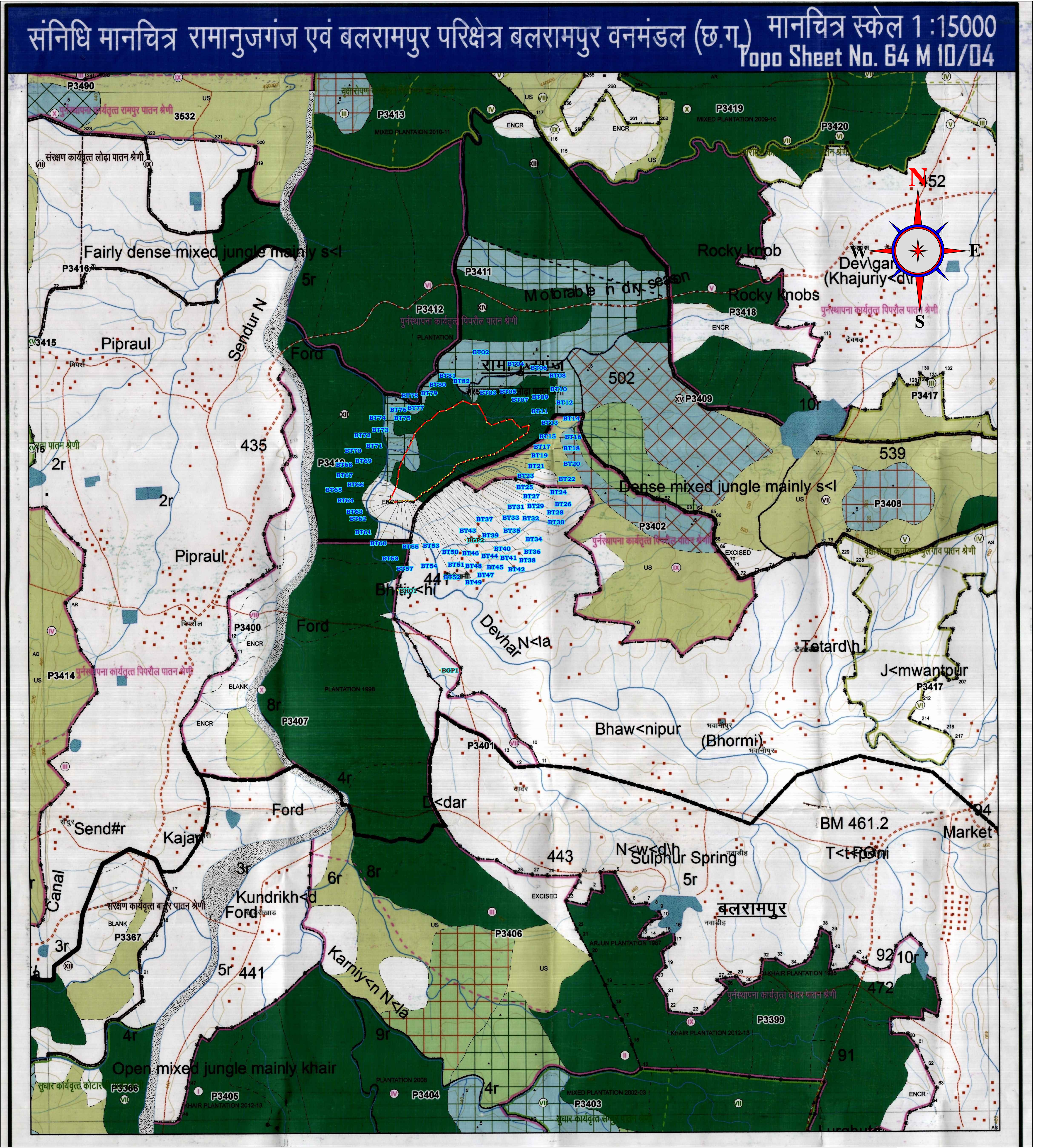
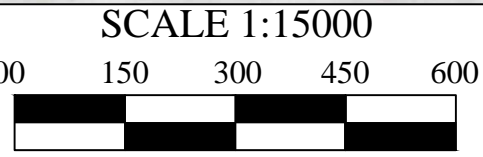


GEO REFERENCE FOREST MAP OF THE DGPS SURVEYED AREA FOR COMPENSATORY AFFORESTRATION FOR KHUTPALI DIVERSION
PROPOSAL WRD RAMANUJGANJ, AT VILLAGE - BHITIYAH, DISTRICT BALRAMPUR (C.G.)



DGPS CO-ORDINATES OF THE FIXED BOUNDARY POINT OF CA LAND
AREA IN DEGREE, MINUTE, SECOND

NAME	LONGITUDE	LATITUDE	ELEVATION	BT#1	83° 36' 57.99711"E	23° 43' 07.84172"N	383.085
BH01 (BASE)	83° 36' 48.72790"E	23° 42' 40.92493"N	389.895	BT#2	83° 36' 57.20088"E	23° 43' 07.12601"N	386.185
BT02	83° 37' 08.45016"E	23° 43' 29.13633"N	384.73	BT#3	83° 36' 56.70634"E	23° 43' 06.91635"N	385.357
BT03	83° 37' 10.58523"E	23° 43' 29.16481"N	384.33	BT#4	83° 36' 56.37543"E	23° 43' 06.56276"N	384.313
BT04	83° 37' 12.83126"E	23° 43' 26.25240"N	390.718	BT#5	83° 36' 55.43983"E	23° 43' 06.29715"N	384.919
BT05	83° 37' 13.76615"E	23° 43' 24.53098"N	392.499	BT#6	83° 36' 54.58525"E	23° 43' 06.02031"N	384.034
BT06	83° 37' 15.24794"E	23° 43' 23.74207"N	389.028	BT#7	83° 36' 54.32565"E	23° 43' 05.55768"N	386.665
BT07	83° 37' 17.52073"E	23° 43' 24.41151"N	395.768	BT#8	83° 36' 53.48024"E	23° 43' 05.00551"N	385.991
BT08	83° 37' 19.84430"E	23° 43' 25.10606"N	395.934	BT#9	83° 36' 52.79957"E	23° 43' 04.47695"N	386.961
BT09	83° 37' 21.69520"E	23° 43' 25.32288"N	396.302	BT#0	83° 36' 52.01718"E	23° 43' 03.82446"N	388.242
BT10	83° 37' 22.85945"E	23° 43' 24.14035"N	398.084	BT#1	83° 36' 51.65583"E	23° 43' 03.96225"N	387.503
BT11	83° 37' 24.26483"E	23° 43' 23.11984"N	397.508	BT#2	83° 36' 51.17680"E	23° 43' 03.94874"N	388.324
BT12	83° 37' 27.07280"E	23° 43' 23.79557"N	395.268	BT#3	83° 36' 50.60254"E	23° 43' 04.01024"N	387.362
BT13	83° 37' 26.83771"E	23° 43' 21.88999"N	397.787	BT#4	83° 36' 49.73896"E	23° 43' 04.03514"N	386.273
BT14	83° 37' 25.61999"E	23° 43' 21.23604"N	397.343	BT#5	83° 36' 48.90731"E	23° 43' 04.05521"N	385.769
BT15	83° 37' 23.75912"E	23° 43' 20.19085"N	395.477	BT#6	83° 36' 48.06240"E	23° 43' 03.91221"N	384.508
BT16	83° 37' 22.32006"E	23° 43' 19.45379"N	395.039	BT#7	83° 36' 47.42800"E	23° 43' 03.87469"N	384.112
BT17	83° 37' 19.52476"E	23° 43' 18.80182"N	393.644	BT#8	83° 36' 47.30819"E	23° 43' 03.77492"N	383.649
BT18	83° 37' 17.88807"E	23° 43' 16.83746"N	393.731	BT#9	83° 36' 45.59493"E	23° 43' 03.64306"N	385.083
BT19	83° 37' 16.70335"E	23° 43' 16.32432"N	393.319	BT#0	83° 36' 45.12515"E	23° 43' 03.53725"N	384.385
BT20	83° 37' 15.59925"E	23° 43' 16.02584"N	392.371	BT#1	83° 36' 44.50353"E	23° 43' 03.51924"N	386.652
BT21	83° 37' 14.18481"E	23° 43' 15.84700"N	392.817	BT#2	83° 36' 44.26991"E	23° 43' 03.92586"N	385.932
BT22	83° 37' 13.27236"E	23° 43' 15.55329"N	392.428	BT#3	83° 36' 44.90854"E	23° 43' 05.02979"N	382.156
BT23	83° 37' 12.77871"E	23° 43' 15.53307"N	392.291	BT#4	83° 36' 46.31596"E	23° 43' 07.82817"N	387.243
BT24	83° 37' 11.83349"E	23° 43' 14.94767"N	392.49	BT#5	83° 36' 46.30708"E	23° 43' 07.83720"N	386.714
BT25	83° 37' 10.30704"E	23° 43' 14.94767"N	390.87	BT#6	83° 36' 46.60301"E	23° 43' 09.71111"N	387.167
BT26	83° 37' 09.00509"E	23° 43' 14.76691"N	390.729	BT#7	83° 36' 46.78233"E	23° 43' 12.19203"N	382.243
BT27	83° 37' 07.79592"E	23° 43' 14.41167"N	389.666	BT#8	83° 36' 47.57922"E	23° 43' 14.12912"N	384.56
BT28	83° 37' 06.30734"E	23° 43' 13.86419"N	387.59	BT#9	83° 36' 48.44206"E	23° 43' 16.22443"N	381.447
BT29	83° 37' 05.72122"E	23° 43' 13.70413"N	381.305	BT#0	83° 36' 49.44797"E	23° 43' 17.71260"N	380.711
BT30	83° 37' 04.89175"E	23° 43' 13.39410"N	381.472	BT#1	83° 36' 50.32338"E	23° 43' 19.53473"N	381.464
BT31	83° 37' 04.24081"E	23° 43' 12.65796"N	381.499	BT#2	83° 36' 51.13430"E	23° 43' 21.57112"N	383.509
BT32	83° 37' 04.05255"E	23° 43' 11.77340"N	382.144	BT#3	83° 36' 52.98306"E	23° 43' 23.33422"N	386.472
BT33	83° 37' 03.25415"E	23° 43' 11.26292"N	381.622	BT#4	83° 36' 54.54833"E	23° 43' 24.57166"N	388.488
BT34	83° 37' 02.59232"E	23° 43' 10.83648"N	382.52	BT#5	83° 36' 55.97196"E	23° 43' 25.10173"N	387.067
BT35	83° 37' 02.58262"E	23° 43' 10.53105"N	385.372	BT#6	83° 36' 58.33653"E	23° 43' 27.12293"N	386.424
BT36	83° 37' 01.56449"E	23° 43' 10.20073"N	384.276	BT#7	83° 37' 00.49515"E	23° 43' 27.50759"N	387.452
BT37	83° 37' 00.86964"E	23° 43' 09.58153"N	382.735	BT#8	83° 37' 02.70921"E	23° 43' 28.36406"N	390.364
BT38	83° 36' 59.92858"E	23° 43' 09.02915"N	381.648	BT#9	83° 37' 04.36862"E	23° 43' 29.33045"N	386.116
BT39	83° 36' 59.36854"E	23° 43' 08.59135"N	383.746	BT#0	83° 37' 05.79774"E	23° 43' 29.97884"N	388.307
BT40	83° 36' 58.84056"E	23° 43' 08.09366"N	385.064	BGP1	83° 37' 09.15695"E	23° 42' 54.09753"N	391.02
				BGP2	83° 36' 56.37623"E	23° 42' 21.20412"N	393.042



MAP NO. - 1

DGPS SURVEY MAP OF BHITIYAH CA LAND AREA
DIST.- BALRAMPUR (C.G.)

Applicant

Office of the Executive Engineer,
Water Resources Division No.-2), Ramanujganj
District - Balrampur, Chhattisgarh

Surveyed by :-

Kamal Sahu

(Jr. Geologist)



Alok Verma

Director (Operation)

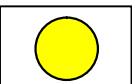
For,
Siddharth Geo Consultants (INDIA) Pvt. Ltd.,
621/3 1st Floor , Ramkund, Samta Colony,
Behind Life Worth Hospital , Raipur (C.G.)

Land Detail of forest CA land

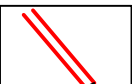
Type of Land- Protected Forest land
Forest Division- Balrampur
Forest Range- Ramanujganj
Forest Map No.- 64M/10/04
Forest Compartment no.-P3410,

Surveyed Area - 45.00 Hect.
Date of Survey - 11-08-2016 to 14-08-2016

INDEX



Fixed Boundary Points



DGPS Surveyed Area CA
Land

