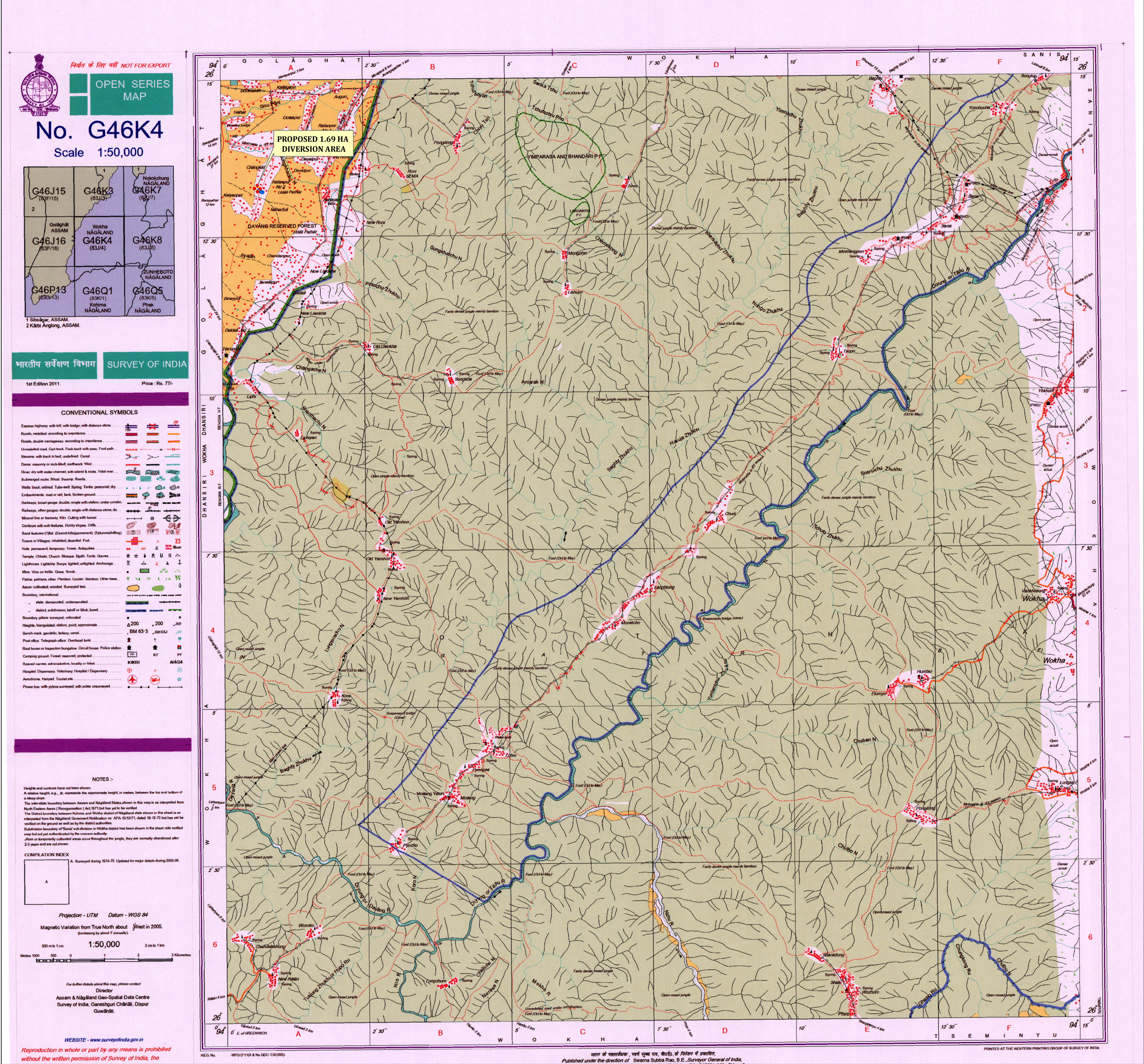


MAP SHOWING THE 1.69 HECTARE ( PLINTH AREA =1.55 & APPROACH ROAD = 0.14) SUPHAYAM-1 LOCATION DIVERSION AREA AT DOYANG R.F UNDER GOLAGHAT DIVISION, GOLAGHAT

SCALE:- 1:50,000



LEGEND	
<div></div>	TOTAL STATION POINTS (PLINTH AREA)
<div></div>	PROPOSED PLINTH AREA
<div></div>	TOTAL STATION POINTS (APPROACH ROAD AREA)
<div></div>	PROPOSED APPROACH ROAD

TOTAL STATION CO-ORDINATE READINGS OF THE PROPOSED AREA				
TOTAL STATION POINTS	LONGITUDE	LATITUDE	AREA (Ha)	NAME OF LOCATION
A	94° 0' 41.199" E	26° 13' 16.444" N	1.55	SUPHAYAM-1
B	94° 0' 38.309" E	26° 13' 19.501" N		
C	94° 0' 35.179" E	26° 13' 16.537" N		
D	94° 0' 38.296" E	26° 13' 13.490" N		

TOTAL STATION CO-ORDINATE READINGS OF THE PROPOSED APPROACH ROAD						
TOTAL STATION POINTS	LONGITUDE	LATITUDE	TOTAL STATION POINTS	LONGITUDE	LATITUDE	AREA (Ha)
1	94° 0' 39.880" E	26° 13' 15.102" N	6	94° 0' 43.592" E	26° 13' 12.702" N	0.14
2	94° 0' 40.617" E	26° 13' 14.575" N	7	94° 0' 42.230" E	26° 13' 13.101" N	
3	94° 0' 41.643" E	26° 13' 13.886" N	8	94° 0' 41.415" E	26° 13' 13.592" N	
4	94° 0' 42.405" E	26° 13' 13.425" N	9	94° 0' 40.405" E	26° 13' 14.269" N	
5	94° 0' 43.766" E	26° 13' 13.025" N	10	94° 0' 39.617" E	26° 13' 14.832" N	

भारत के नक्शाकर्ता, सर्वेक्षण रास, मीटिंग, के नियम ने प्रकाशित,  
Published under the direction of Swarna Subba Rao, B.E., Surveyor General of India.

PRINTED AT THE WESTERN PRINTING GROUP OF SURVEY OF INDIA