



निर्वात के लिए नहीं NOT FOR EXPORT

OPEN SERIES
MAP

No. F42C14

Scale 1:50,000

F42C9 (41A/9)	F42C13 (41A/13)	F42D1 (41E/1)
F42C10 (41A/10)	F42C14 (41A/14) Kachchh GUJARAT	F42D2 (41E/2)
F42C11 (41A/11)	F42C15 (41A/15)	F42D3 (41E/3)

भारतीय सर्वेक्षण विभाग

SURVEY OF INDIA

1st Edition 2011.

Price : Rs. 777/-

CONVENTIONAL SYMBOLS

Express highway, with toll, with bridge, with distance stone	
Roads, metalled, according to importance	
Roads, double carriageway, according to importance	
Unmetalled road, Cart-track, Pack-track with pass, Foot-path	
Streams, with track in bed, unfilled, Canal	
Dams, masonry or rock-filled, earthwork, Weir	
River, dry with water channel, with island & rocks, Tidal river	
Submerged rocks, Shoal, Swamp, Reeds	
Wells, lined, unlined, Tube-well, Spring, Tanks, perennial, dry	
Embankments, road or rail, bank, Broken ground	
Railways, broad gauge, double, single with station, under constr.	
Railways, other gauges, double, single with distance stone, do.	
Mineral line or tramway, Kilm. Cutting with tunnel	
Contours with sub-features, Rocky slopes, Cliffs	
Sand features (1 ft. (2 sand hills) permanent), (3 sand hills) shifting	
Towns or Villages, inhabited, deserted, Fort	
Huts, permanent, temporary, Tower, Antiquities	
Temple, Chhatra, Church, Mosque, Idgah, Tomb, Graves	
Lighthouse, Lightship, Buoy, lighted, unlighted, Anchorage	
Mine, Vine on trellis, Grass, Scrub	
Palms, palm-tree, other, Plantain, Conifer, Bamboo, Other trees	
Areas, cultivated, wooded, Surveyed tree	
Boundary, international	
state, demarcated, undemarcated	
district, subdivision, tahsil or taluk, forest	
Boundary pillars, surveyed, unlocated	
Heights, triangulated, station, point, approximate	
Bench-mark, geodetic, tertiary, canal	
Post office, Overhead tank	
Rest house or inspection bungalow, Circuit house, Police station	
Camping ground, Forest, reserved, protected	
Spaced names, administrative, locality or tribal	
Hospital, Dispensary, Veterinary Hospital / Dispensary	
Aerodrome, Helipad, Tourist site	
Power line, with pylons surveyed, with poles unsurveyed	

NOTES

Heights and Contours have not been shown.
A relative height, & represents the approximate height, in metres, between the top and bottom of a steep slope.
Tanks, shown dry, in this area usually contain water from July to December.
Cultivation is periodic and dependent on rainfall.
The area falling in this sheet other than that of Lakpat and Nakhtarana taluk is not included in any taluk but is a part of Kachchh District.
International boundary/coastal line in adjoining sheet in administrative index has not been shown.

COMPILATION INDEX

A. Surveyed during 1955-56. Updated for major details during 2005-07.



Projection - UTM Datum - WGS 84

Magnetic Variation from True North about 0° in 2005.
(Increasing by about 1° East annually).

1:50,000

500 m to 1 cm 2 cm to 1 km

Metres 1000 500 0 1 2 3 Kilometres

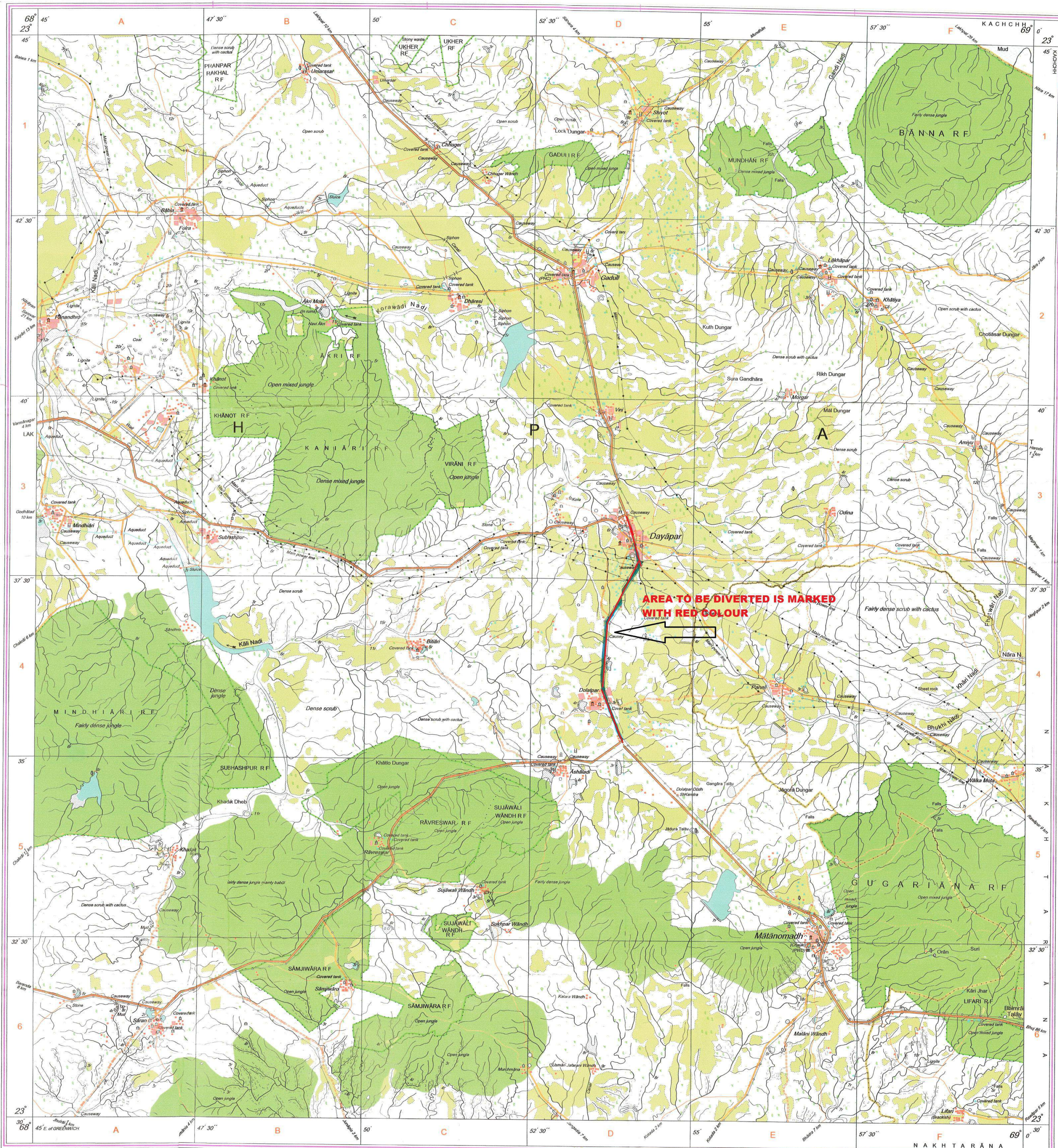
For further details about this map, please contact

Director
Gujarat, Daman & Diu Geo-Spatial Data Centre
Survey of India, Sector 10-A
Gandhinagar.

WEBSITE - www.surveyofindia.gov.in

Reproduction in whole or part by any means is prohibited
without the written permission of Survey of India, the
National Mapping Agency.

GOVERNMENT OF INDIA COPYRIGHT, 2011.



REG. No. - SPG D11 (GD&D GDC-1:50,000)

भारत के सर्वेक्षण, सर्वेक्षण विभाग, भारत, के प्रमुख के द्वारा,
Published under the direction of Swarna Subba Rao, B.E., Surveyor General of India,
Survey of India, Hathi Bakarla Estate, Post Box No. 37, Dehra Dun-248001 (Uttarakhand)
Department of Science & Technology, Government of India.

PRINTED AT THE SOUTHERN PRINTING GROUP OF SURVEY OF INDIA.