



निर्वात के लिए नहीं NOT FOR EXPORT

OPEN SERIES
MAP

No. D43X14

Scale 1:50,000

Bengaluru Urban KARNATAKA D43X9 (57H/9)	D43X13 (57H/13)	Kolār KARNATAKA D44S1 (57U/1)
D43X10 (57H/10)	D43X14 (57H/14) Krishnagiri TAMIL NADU	D44S2 (57U/2)
D43X11 (57H/11)	D43X15 (57H/15)	D44S3 (57U/3) Dharmapuri TAMIL NADU

1 Rāmānagara, KARNATAKA
2 Chittoor, ANDHRA PRADESH
3 Bengaluru Rural, KARNATAKA

भारतीय सर्वेक्षण विभाग

SURVEY OF INDIA

1st Edition 2011.

Price : Rs. 70/-

CONVENTIONAL SYMBOLS

Express highway, with toll, with bridge, with distance stone	
Roads, metalled, according to importance	
Roads, double cartway, according to importance	
Unmetalled road, Cart track, Pack-track with pass, Foot-path	
Streams, with track in bed, unconfined, Canal	
Dams, masonry or rock-filled, earthwork, Weir	
River, dry with water channel, with island & rocks, Tidal river	
Submerged rocks, Shoal, Swamp, Reeds	
Wells, lined, unlined, Tube-well, Spring, Tanks, perennial, dry	
Embankments, road or rail, tank, Broken ground	
Railways, broad gauge, double, single, with station, under construction	
Railways, other gauges, double, single, with distance stone, do.	
Mineral line or tramway, K.M. Culling with tunnel	
Contours with sub-features, Rocky slopes, Cliffs	
Sand features (flat, 2 sand hills, permanent), (Shifting)	
Hills, permanent, temporary, Tower, Antiquities	
Temple, Chhatra, Church, Mosque, Idgah, Tomb, Graves	
Lighthouse, Lightship, Buoys, lighted, unlighted, Anchorage	
Mine, Vine on trellis, Grass, Scrub	
Palm, palmyra, other, Plantain, Conifer, Bamboo, Other trees	
Areas, cultivated, wooded, Surveyed tree	
Boundary, international	
state, demarcated, undemarcated	
district, subdivision, tahsil or taluk, forest	
Boundary pillars, surveyed, unlocated	
Heights, triangulated, station, point, approximate	
Benchmark, geodetic, tertiary, canal	
Post office, Telegraph office, Overhead tank	
Rest house or inspection bungalow, Circuit house, Police station	
Camping ground, Forest, reserved, protected	
Spiced names, administrative, locality or tribal	
Hospital, Dispensary, Veterinary, Hospital, Dispensary	
Aerodrome, Helipad, Tourist site	
Power line, with pylons surveyed, with poles unsurveyed	

REFERENCES

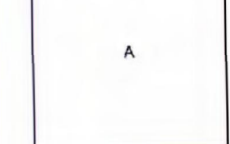
NH 7 National Highway No. 7	NH 207 National Highway No. 207
EP Euclidian Projection	MG Mango Garden
CP Causway Plantation	TP Teak Plantation
N NAGANUR RF	

NOTES :-

Heights are in metres and above Indian mean sea level.
Contours are approximate.
The kilometre stone numbers along roads and railways are shown in short type, e.g., '15'.
Tanks shown dry, in this area usually contain water from October to February.
Tube-wells are numerous throughout the sheet, only the important ones have been shown.
Unmetalled roads and cart tracks in this sheet are generally made in the dry season.
The triangulated heights and contours in this sheet have not been adjusted to the heights of the spirit-levelled bench-marks, and may not be strictly in accordance with them.
Temples with Gopuram are shown thus.

COMPILATION INDEX

A. Surveyed during 1955-56. Updated for major details during 2005-06.



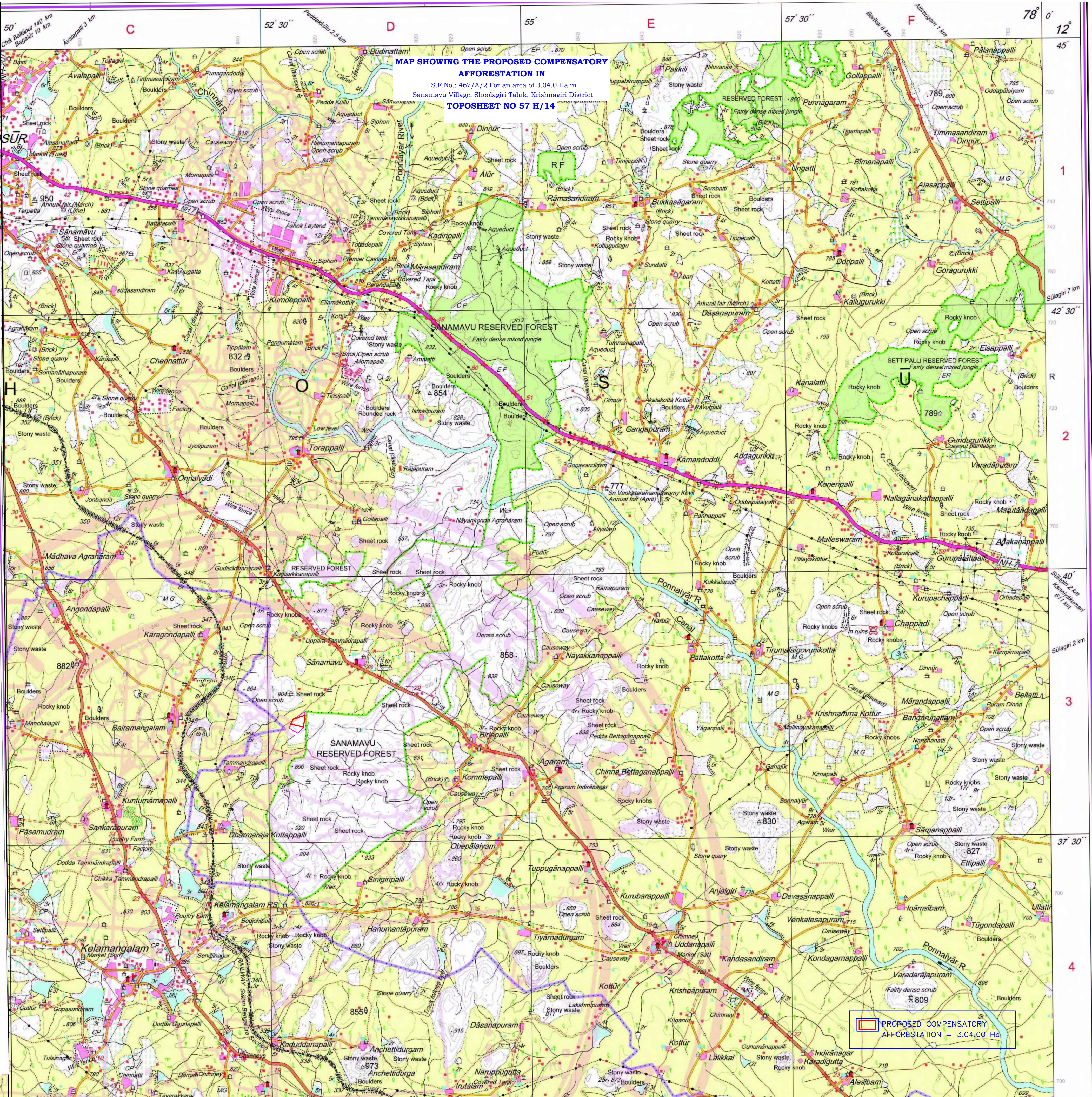
Projection - UTM Datum - WGS 84
Magnetic Variation from True North about 2° West in 2005.
(Annual change negligible)

1:50,000

500 m to 1 cm
2 cm to 1 km
3 Kilometres

CONTOUR INTERVAL 20 METRES

MAP SHOWING THE PROPOSED COMPENSATORY AFFORESTATION IN S.F.No.: 467/A/2 For an area of 3.04.0 Ha in Sanamavu Village, Shoalagiri Taluk, Krishnagiri District TOPOSHEET NO 57 H/14



PROPOSED COMPENSATORY
AFFORESTATION = 3.04.00 Ha