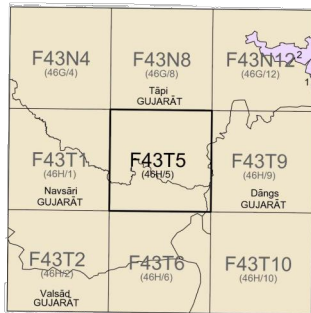




No. F43T5

Scale 1:50,000



भारतीय सर्वेक्षण विभाग SURVEY OF INDIA

1st Edition 2011. Price: Rs. 77/-

CONVENTIONAL SYMBOLS



NOTES:-

Heights and contours have not been shown. Contours are approximate. Aerial photographs, if any, are represented by the appropriate symbol.

COMPILATION INDEX

A Surveyed during 1970-74. Updated for major details from 1:25,000 survey during 1989-2000. Contour interval, open bench mark and bench mark are as per 1st Edition map 1974 on 1:50,000 scale.

Projection - UTM Datum - WGS 84

Magnetic Variation from True North about 1° West in 2005. (Decreasing by about 1° annually).

1:50,000

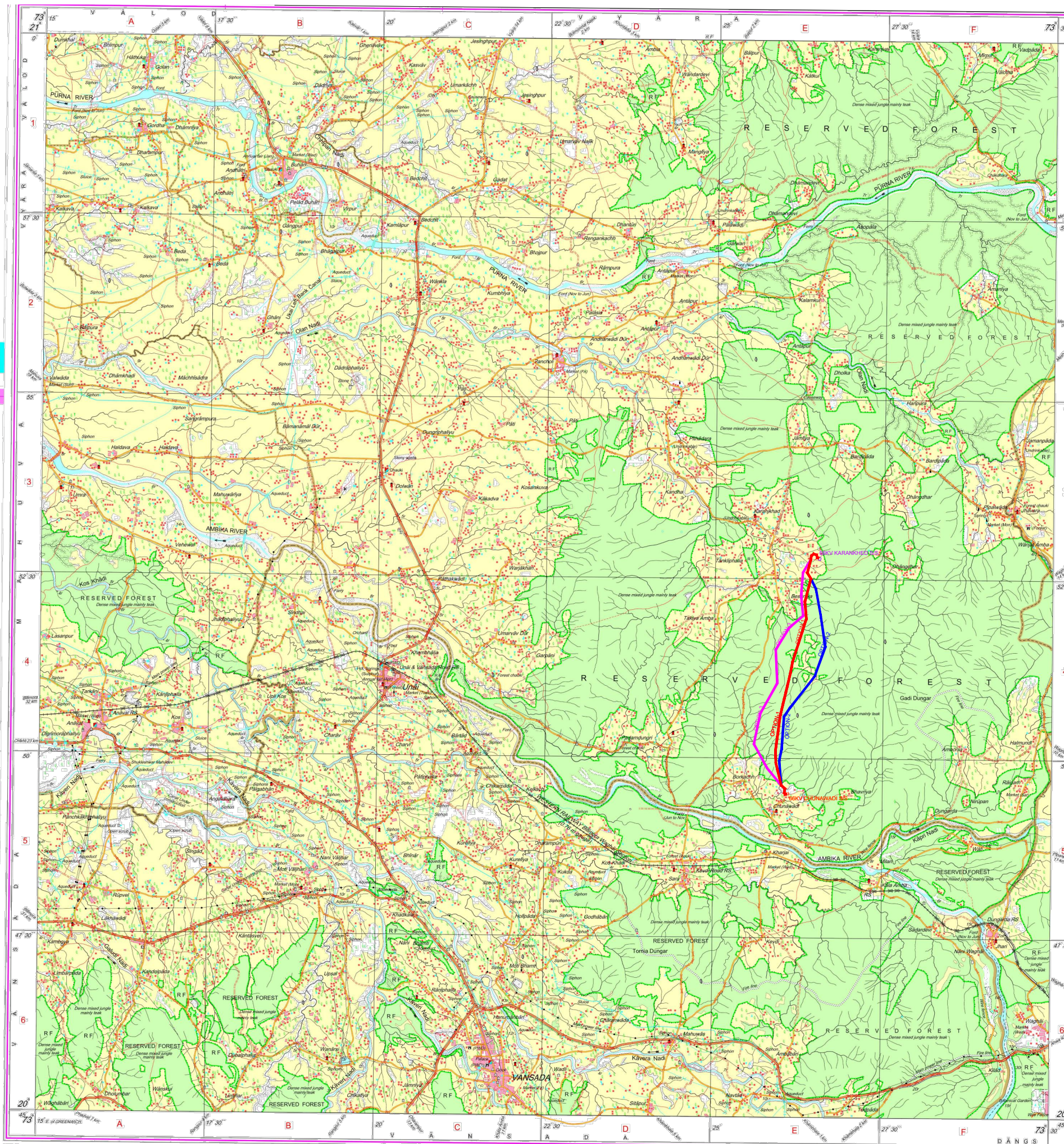
500 m to 1 cm 2 cm to 1 km 3 Kilometres

For further details about this map, please contact:
Director
Gujarat, Daman & Diu Geo-Spatial Data Centre
Survey of India, Sector 10(A)
Gandhinagar.

WEBSITE - www.surveyofindia.gov.in

Reproduction in whole or part by any means is prohibited without the written permission of Survey of India, the National Mapping Agency.

GOVERNMENT OF INDIA COPYRIGHT, 2011.



NOTE AND REFERENCE

APPROVALS

(1) NOTIFICATION :- NO :- PART NO :-	VOL.NO.:- DATED :-
(2) H.O. ROUTE APPRL:- NO:-CE(PRO)/ DATED :-	
(3) C.E.I. APPRL:- NO:-CEI/INS/ DATED :-	
(4) P.T.C.C APPRL:- NO:- PTCC/ DATED :-	

TOTAL BEE LENGTH OF LINE :- 6.150KM

TOTAL LENGTH OF ROUTE LINE:- 6.665KM

CROSSING DETAILS

1. NATIONAL HIGHWAY CROSSING :-	00 NOS.
2. STATE HIGHWAY CROSSING :-	00 NOS.
3. VILLAGE ROAD CROSSING :-	03 NOS.
4. RIVER CROSSING :-	00 NOS.
5. CANAL CROSSING :-	00 NOS.
6. RAILWAY CROSSING :-	00 NOS.
7. 11KV LINE CROSSING :-	05 NOS.
8. 400KV D/C LINE CROSSING :-	00 NOS.
9. 220KV D/C LINE CROSSING :-	00 NOS.
10. 132KV LINE CROSSING :-	00 NOS.
11. 66KV LINE CROSSING :-	02 NOS.

TOWER SCHEDULE

1. "PP" TYPE TOWER :-	18 NOS.
2. "PQ" TYPE TOWER :-	02 NOS.
3. "PR" TYPE TOWER :-	03 NOS.
4. "PS" TYPE TOWER :-	06 NOS.



Executive Engineer (Const.)
GETCO, Construction Division
NAVARI

LEGEND

	EXISTING 66KV CHUNAVADI S/S GANTRY
	EXISTING 66KV KARANKHED S/S GANTRY
	PROPOSED ROUTE OPTION 1 (LENGTH 6.67KM)
	PROPOSED ROUTE OPTION 2 (LENGTH 6.91KM)
	PROPOSED ROUTE OPTION 3 (LENGTH 7.17KM)

GUJARAT ENERGY TRANSMISSION CORPN.LTD.
S.P VIDYUT BHAVAN RACE COURSE,
VADODARA-390007

PROP. ROUTE MAP OF 66KV D/C TOWER LINE FROM EXIS. 66KV CHUNAVADI S/S TO EXIS. 66KV KARANKHED S/S ON PANTHER TOWER WITH ACSR PANTHER CONDUCTOR

DRAWN:	CHECKED:	APPD:	SIZE:
(SURVEYOR)	D.E. (TECH)	E.E.(CONST)	A2
SCALE:	DATE:	DRG.NO:	SHEET:
1:500			1 OF 1
			REV:
			RO

भारत के सर्वेक्षक, सर्वे गुरु, सर्वेक्षक के निदेशों में प्रमाणित,
Published under the direction of Swarna Subba Rao, B.E., Surveyor General of India,
Survey of India, Hidirbakkala Estate, Post Box No.37, Chitra Durgam Cheruvu (Hyderabad)
Department of Science & Technology, Government of India.

PRINTED AT THE SOUTHERN PRINTING GROUP OF SURVEY OF INDIA