

No. F42R13

Scale 1:50,000

સંખ્યા	જિલ્લો	કોડ	અંશ
1	અમદાવાદ	F42R10	410/10 (46C/10)
2	અંબાલ	F42R12	41N/12 (46B/12)
3	ભાવનગર	F42R13	41O/13 (46C/13)
4	ગાંધીનગર	F42R14	41O/14 (46C/14)
5	જામનગર	F42R15	41P/15 (46B/15)
6	જુનાગઢ	F42R16	41N/16 (46B/16)
7	કચ્છ	F42R17	41P/17 (46B/17)
8	ખેડા	F42R18	41O/18 (46C/18)
9	મહેસાના	F42R19	41O/19 (46C/19)
10	રાજકોટ	F42R20	41O/20 (46C/20)
11	સુરેન્દ્રનગર	F42R21	41O/21 (46C/21)
12	વલસાડ	F42R22	41O/22 (46C/22)

1 Amreli, GUJARĀT.
2 Rājkot, GUJARĀT.

भारतीय सर्वेक्षण विभाग

SURVEY OF INDIA

1st Edition 2010.

Price:Rs.94/-

CONVENTIONAL SYMBOLS

Express highway; with toll; with bridge; with distance stone		70
Roads, detailed according to importance		70
Roads, double carriageway; according to importance		70
Unmatted road. Cart-track. Pack-track with pass. Foot-path		70
Streams; with track in bed; undefined. Canal		70
Dikes; masonry or rock-filled; earthenwork. Weir		70
River; dry with water channel; with island & rocks. Tidal river		70
Submerged rocks Shoal Swamp Reeds		70
Wells: lined; unlined. Tube-well. Spring. Tanks; perennial; dry		70
Embankments: road or rail. Broken ground		70
Railways, broad gauge; double; single with station; under constr.		70
Railways, other gauges; double; single with distance stone; do.		70
Mineral line or tramway. Kink. Cutting with tunnel.		70
Contours with sub-features. Rocky slopes. Cliffs		70
Sea features (1) Flat. (2)land-heights. (3)lunes(shifting)		70
Towns or Villages; inhabited; deserted. Fort.		70
Huts; permanent; temporary. Tower. Antiquities		70
Temple. Chhatra. Church. Mosque. Igloo. Tomb. Graves		70
Lightships. Lighthouse. Buoy. Undefined. Anchorage		70
Mine. Mine on treflis. Grass. Scrub		70
Palm; palmyra; other. Plantain. Conifer. Bamboo. Other trees		70
Areas: cultivated; wooded. Surveyed tree		70
Boundary, international		70
state demarcated; undemarcated		70
district; subdivision; taluk or taluk; forest		70
Boundary pillars; surveyed; unlocated		70
Height, triangulated; station; point; approximate		70
Bench-mark; geodetic; tertiary; canal		70
Post office. Overhead tank		70
Rest house or inspection bungalow. Circuit house. Police station		70
Camping ground. Forest: reserved; protected		70
Spaced names: administrative; locality or tribal		70
Hospital. Dispensary. Veterinary; Hospital / Dispensary		70
Aerodrome. Helipad. Tourist site		70
Power line; with pylons surveyed; with poles unsurveyed		70

Proposed OFC Line



REFERENCE

PWD Public Works Department

NOTES :-

Heights and Contours have not been shown.
A relative height, e.g., .8; represents the approximate height, in metres, between the top and bottom of a steep slope.
Tanks in this area usually contain water from July to October.
Cultivation is periodic and dependent on rainfall.

COMPILATION INDEX

A. Compiled from 1:25,000 survey, during 1984-85. Updated for major details during 2005-06.

Projection - UTM Datum - WGS 84

Magnetic Variation from True North about $\frac{1}{2}^{\circ}$ West in 2005.
(Decreasing by about $1'$ annually).

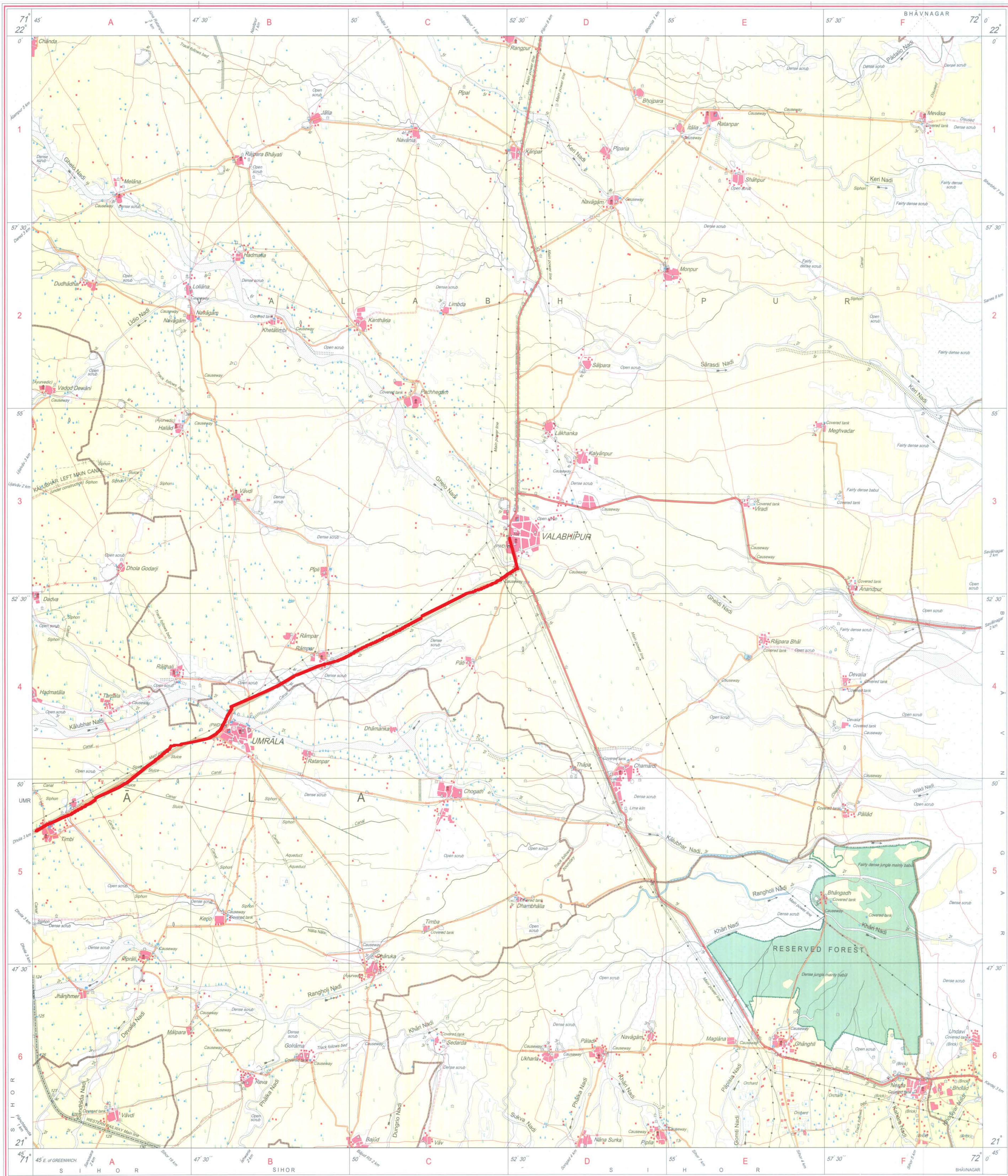
1:50,000

500 m to 1 cm 1:50,000 2 cm to 1 km

Metres 1000 500 0 1 2 3 Kilometres

For further details about this map, please contact
Director
Varāṇasī, Damān & Diu Geo-Spatial Data Centre
Survey of India, Sector 10 (A)
Gāndhīnagar.

WEBSITE - www.surveyofindia.gov.in



REG. No. 9638-SPG D *11 (G D & D GDC-1:50,000)-1508 *15

भारत के माध्यमवैश्वक गणन मणि त्रिपाठी, एमएससी (फिजिक्स), पीएचडी (कार्टो) (आईटीसी नैडरलैण्ड्स) के निदेशन में प्रकाशित,
Published under the direction of Rajendra Mani Tripathi, M.Sc. (Physics), P.G. Diploma (Carto) (ITC, The Netherlands) Surveyor General of India
Survey of India, Hāthibarkala Estate, Post Box No. 37, Dehra Dūn - 248001 (Uttarākhānd),
Department of Science & Technology, Government of India.

PRINTED AT THE SOUTHERN PRINTING GROUP OF SURVEY OF INDIA.

No. F42R9

Scale 1:50,000

1	Rajkot GUJARAT F42L8 41N/8	F42L12 41N/12	Ahmadabad GUJARAT F42L16 41N/16
	F42R5 41O/5	Bhavnagar GUJARAT F42R9 41O/9	F42R13 41O/13
	Amreli GUJARAT F42R6 41O/6	F42R10 41O/10	F42R14 41O/14

1. Surendranagar, GUJARAT.

भारतीय सर्वेक्षण विभाग SURVEY OF INDIA

1st Edition 2010.

Price: Rs. 103/-

CONVENTIONAL SYMBOLS

- Express highway: with toll, with bridge; with distance stone
- Roads, metalled: according to importance
- Roads, double cartway: according to importance
- Unmetalled road. Cart-track. Pack-track with pass. Foot-path
- Streams: with track in bed; underlined. Canal
- Dams: masonry or rock-filled; earthwork. Weir
- River: dry with water channel; with island & rocks. Tidal river
- Submerged rocks. Shoal. Swamp. Reeds
- Wells: lined; unlined. Tube-well. Spring. Tanks: perennial; dry
- Embankments: road or rail; tank. Broken ground
- Railways, broad gauge: double; single with station; under constr.
- Railways, other gauges: double; single with distance stone; do
- Mineral line or tramway. Kin. Cutting with tunnel
- Contours with sub-features. Rocky slopes. Cliffs
- Sand features: (1) flat. (2) sand-hills (permanent). (3) dunes (shifting)
- Towns or Villages: inhabited; deserted. Fort
- Huts: permanent; temporary. Tower. Antiquities
- Temple. Chattri. Church. Mosque. Idgah. Tomb. Graves
- Lighthouse. Lightship. Buoys: lighted; unlighted. Anchorage
- Mine. Vine on trellis. Grass. Scrub
- Palms: palmyra; other. Plantain. Conifer. Bamboo. Other trees
- Areas: cultivated; wooded. Surveyed tree
- Boundary, international
- state: demarcated; undemarcated
- district; subdivision; tahsil or taluk; forest
- Boundary pillars: surveyed; unlocated
- Heights, triangulated station; point; approximate
- Bench-mark: geodetic; tertiary; canal
- Post office. Overhead tank
- Rest house or inspection bungalow. Circuit house. Police station
- Camping ground. Forest: reserved; protected
- Spaced names: administrative; locality or tribal
- Hospital. Dispensary. Veterinary. Hospital / Dispensary
- Aerodrome. Helipad. Tourist site
- Power line: with pylons surveyed; with poles unsurveyed

Proposed OFC Li

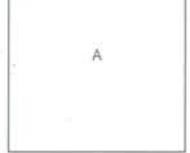


NOTES :-

Heights and Contours have not been shown.
Tanks, in this area usually contain water from July to October.
A relative height, e.g., 40, represents the approximate height, in metres, between the top and bottom of a steep slope.

COMPILATION INDEX

A. Compiled from 1:25,000 scale survey, 1984-85. Updated for major details during 2005-06.



Projection - UTM Datum - WGS 84

Magnetic Variation from True North about 1/2° West in 2005.
(Decreasing by about 1' annually.)

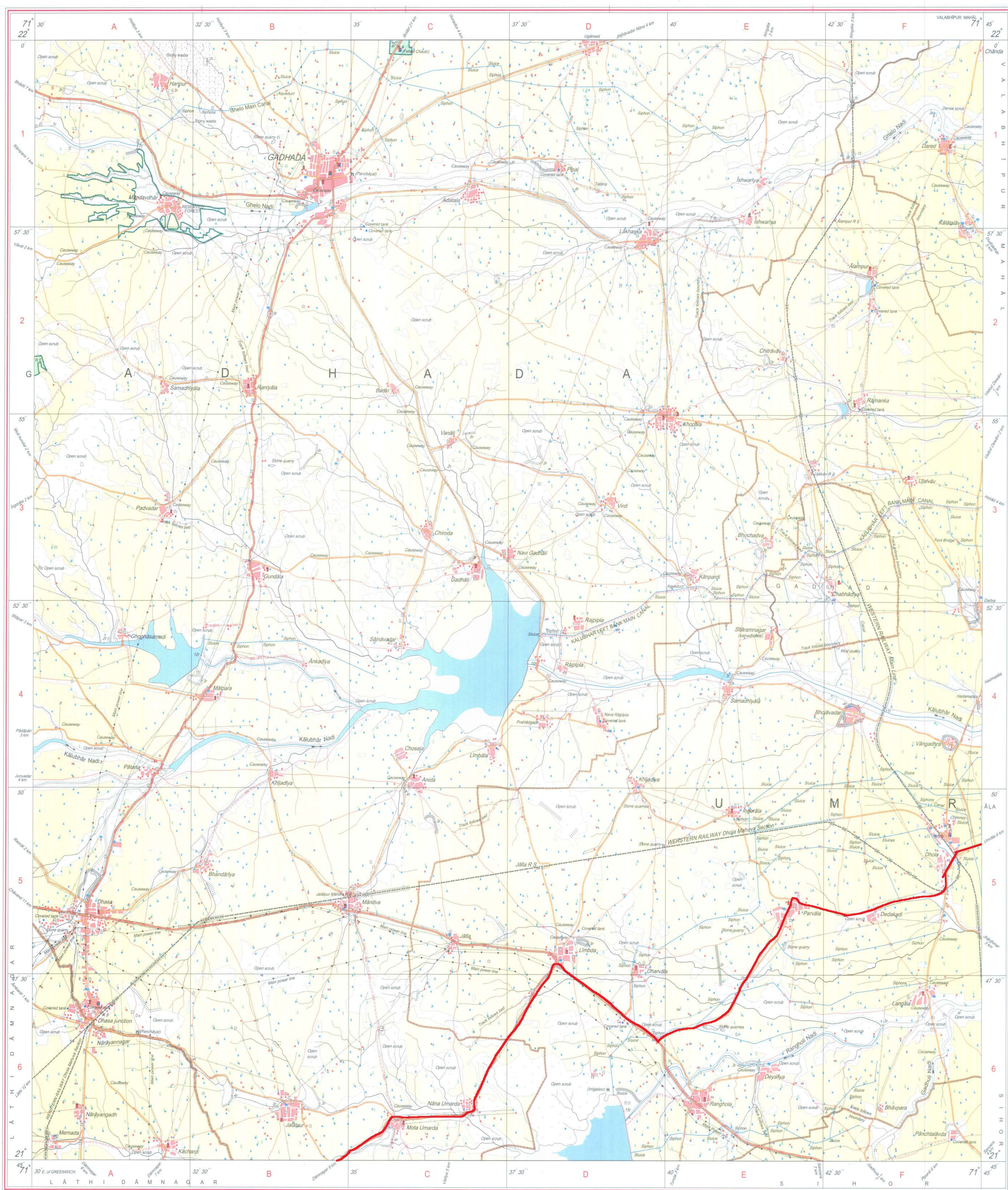
500 m to 1 cm 1:50,000 2 cm to 1 km
Metres 1000 500 0 1 2 3 Kilometres

For further details about this map, please contact
Director
Gujarat, Damán & Diu Geo-Spatial Data Centre
Survey of India, Sector 10-(A)
Gandhinagar.

WEBSITE - www.surveyofindia.gov.in

Reproduction in whole or part by any means is prohibited
without the written permission of Survey of India, the
National Mapping Agency.

GOVERNMENT OF INDIA COPYRIGHT, 2010.



REG. No. 9459 - SPG D 10 (GD&D GDC-1:50,000-1508'15).

भारत के नक्काशेकार डॉ. स्वर्ण सुब्बा राव, के निदेशन में प्रकाशित,
Published under the direction of Dr. Swarna Subba Rao, Surveyor General of India,
Survey of India, Hathiarkala Estate, Post Box No. 37, Dehra Dun - 248001 (Uttarakhand),
Department of Science & Technology, Government of India.

PRINTED AT THE SOUTHERN PRINTING GROUP OF SURVEY OF INDIA.