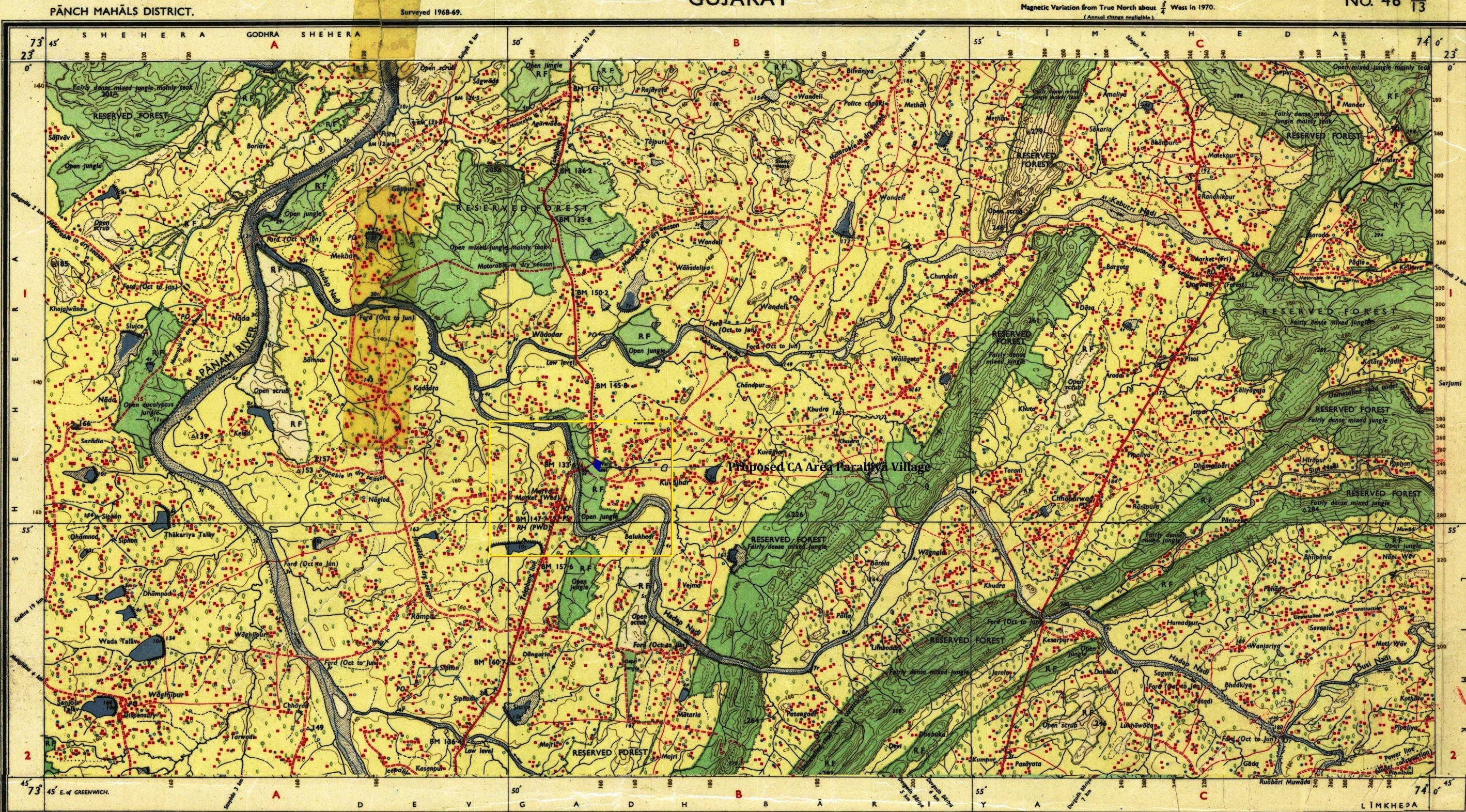


Details scheme of compensatory afforestation for Diversion of 0.80 Ha Reserved Forest land for the construction of New Filter Plant, R.C.C. U/G Sump and Pump House for drinking Water Supply facility in 20 Villages of Godhra Taluka. Village:-Gollav, Taluka:-Godhra, District:-Panchmahal in Gujarat State

GUJARAT

No. 46 F/13



Map details and reference information:

- Scale: 1:50,000
- Contour Interval: 20 METRES
- Administrative Index: PANCH MAHALS
- Legend: Roads, bridges, rivers, etc.
- Index to Sheets: 46 F/13, 46 F/14, 46 F/15, 46 F/16, 46 F/17, 46 F/18, 46 F/19, 46 F/20, 46 F/21, 46 F/22, 46 F/23, 46 F/24, 46 F/25, 46 F/26, 46 F/27, 46 F/28, 46 F/29, 46 F/30, 46 F/31, 46 F/32, 46 F/33, 46 F/34, 46 F/35, 46 F/36, 46 F/37, 46 F/38, 46 F/39, 46 F/40, 46 F/41, 46 F/42, 46 F/43, 46 F/44, 46 F/45, 46 F/46, 46 F/47, 46 F/48, 46 F/49, 46 F/50, 46 F/51, 46 F/52, 46 F/53, 46 F/54, 46 F/55, 46 F/56, 46 F/57, 46 F/58, 46 F/59, 46 F/60, 46 F/61, 46 F/62, 46 F/63, 46 F/64, 46 F/65, 46 F/66, 46 F/67, 46 F/68, 46 F/69, 46 F/70, 46 F/71, 46 F/72, 46 F/73, 46 F/74, 46 F/75, 46 F/76, 46 F/77, 46 F/78, 46 F/79, 46 F/80, 46 F/81, 46 F/82, 46 F/83, 46 F/84, 46 F/85, 46 F/86, 46 F/87, 46 F/88, 46 F/89, 46 F/90, 46 F/91, 46 F/92, 46 F/93, 46 F/94, 46 F/95, 46 F/96, 46 F/97, 46 F/98, 46 F/99, 46 F/100
- Proposed CA Area In Parabiya Village
- Deputy Conservator of Forest Godhra
- RESTRICTED