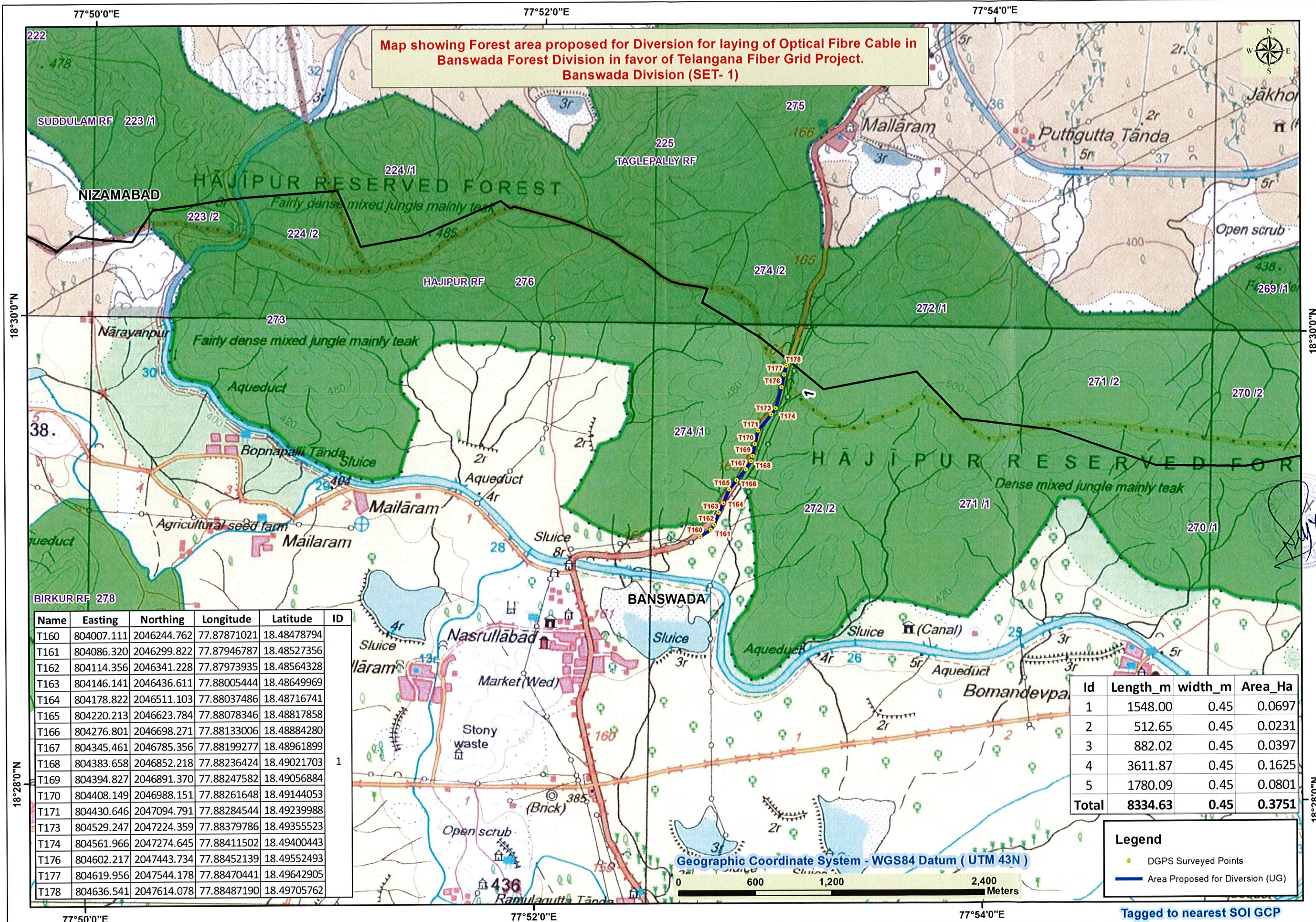


Map showing Forest area proposed for Diversion for laying of Optical Fibre Cable in Banswada Forest Division in favor of Telangana Fiber Grid Project. Banswada Division (SET- 1)



Name	Easting	Northing	Longitude	Latitude	ID
T160	804007.111	2046244.762	77.87871021	18.48478794	1
T161	804086.320	2046299.822	77.87946787	18.48527356	
T162	804114.356	2046341.228	77.87973935	18.48564328	
T163	804146.141	2046436.611	77.88005444	18.48649969	
T164	804178.822	2046511.103	77.88037486	18.48716741	
T165	804220.213	2046623.784	77.88078346	18.48817858	
T166	804276.801	2046698.271	77.88133006	18.48884280	
T167	804345.461	2046785.356	77.88199277	18.48961899	
T168	804383.658	2046852.218	77.88236424	18.49021703	
T169	804394.827	2046891.370	77.88247582	18.49056884	
T170	804408.149	2046988.151	77.88261648	18.49144053	
T171	804430.646	2047094.791	77.88284544	18.49239988	
T173	804529.247	2047224.359	77.88379786	18.49355523	
T174	804561.966	2047274.645	77.88411502	18.49400443	
T176	804602.217	2047443.734	77.88452139	18.49552493	
T177	804619.956	2047544.178	77.88470441	18.49642905	
T178	804636.541	2047614.078	77.88487190	18.49705762	

Id	Length_m	width_m	Area_Ha
1	1548.00	0.45	0.0697
2	512.65	0.45	0.0231
3	882.02	0.45	0.0397
4	3611.87	0.45	0.1625
5	1780.09	0.45	0.0801
<b>Total</b>	<b>8334.63</b>	<b>0.45</b>	<b>0.3751</b>

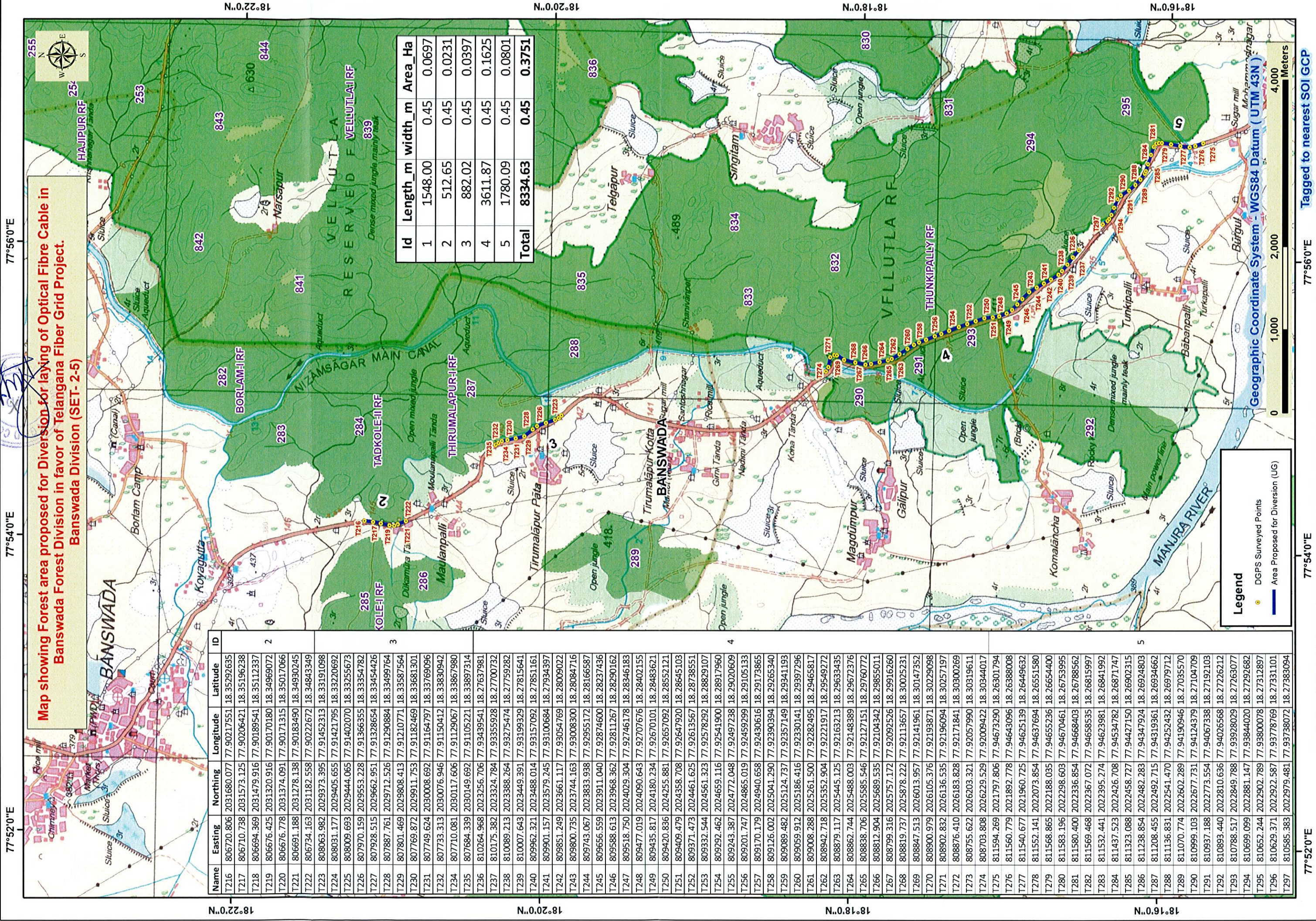
**Legend**

- DGPS Surveyed Points
- Area Proposed for Diversion (UG)

Geographic Coordinate System - WGS84 Datum ( UTM 43N )

0 600 1,200 2,400 Meters

Tagged to nearest SOI GCP



**Map showing Forest area proposed for Diversion for laying of Optical Fibre Cable in Banswada Forest Division in favor of Telangana Fiber Grid Project. Banswada Division (SET- 2-5)**

Name	Easting	Northing	Longitude	Latitude	ID
T216	806720.806	2031680.077	77.90217551	18.35292635	2
T217	806710.738	2031573.125	77.90206421	18.35196238	
T218	806694.369	2031479.916	77.90189541	18.35112337	3
T219	806676.425	2031320.916	77.90170180	18.34969072	
T220	806676.778	2031374.091	77.90171315	18.35017066	
T221	806691.188	2031278.138	77.90183490	18.34930245	
T222	806734.163	2031182.558	77.90222672	18.34843349	
T223	808063.982	2029973.395	77.91452313	18.33191098	
T224	808031.177	2029405.655	77.91421795	18.33220692	
T225	808009.693	2029444.065	77.91402070	18.33255673	
T226	807970.159	2029553.228	77.91366355	18.33354782	
T227	807928.515	2029662.951	77.91328654	18.33454426	
T228	807887.761	2029712.526	77.91290884	18.33499764	
T229	807801.469	2029808.413	77.91210771	18.33587564	
T230	807769.872	2029911.753	77.91182469	18.33681301	
T231	807749.624	2030008.692	77.91164797	18.33769096	
T232	807733.313	2030076.946	77.91150412	18.33830942	
T234	807710.081	2030117.606	77.91129067	18.33867980	
T235	807684.339	2030149.692	77.91105221	18.33897314	
T236	810264.968	2023256.706	77.93439541	18.27637981	
T237	810175.382	2023324.784	77.93355928	18.27700732	
T238	810089.213	2023388.264	77.93275474	18.27759282	
T239	810007.643	2023444.391	77.93199329	18.27815641	
T240	809962.321	2023488.014	77.93157092	18.27851161	
T241	809901.157	2023579.245	77.93100684	18.27934397	
T242	809851.249	2023661.117	77.93054769	18.28009022	
T243	809800.735	2023744.163	77.93008300	18.28084716	
T244	809743.067	2023833.938	77.92955172	18.28166587	
T245	809656.559	2023911.040	77.92874600	18.28237436	
T246	809588.613	2023968.362	77.92811267	18.28290162	
T247	809518.750	2024029.304	77.92746178	18.28346183	
T248	809477.019	2024090.643	77.92707676	18.28402155	
T249	809435.817	2024180.234	77.92670101	18.28483621	
T250	809420.836	2024255.881	77.92657092	18.28552121	
T251	809409.479	2024358.708	77.92647920	18.28645103	
T252	809371.473	2024461.625	77.92613567	18.28738551	
T253	809332.544	2024561.323	77.92578292	18.28829107	
T254	809292.462	2024659.116	77.92541900	18.28917960	
T255	809243.387	2024772.048	77.92497238	18.29020609	
T256	809201.747	2024865.019	77.92459299	18.29105133	
T257	809170.179	2024940.658	77.92430616	18.29173865	
T258	809126.002	2025041.290	77.92390394	18.29265340	
T259	809089.482	2025124.737	77.92357149	18.29341193	
T260	809059.912	2025186.416	77.92330141	18.29397296	
T261	809008.288	2025261.500	77.92282495	18.29465817	
T262	808942.718	2025352.904	77.92221917	18.29549272	
T263	808879.117	2025445.125	77.92163213	18.29633435	
T264	808862.744	2025488.003	77.92148389	18.29672376	
T265	808838.706	2025585.546	77.92127151	18.29760772	
T266	808812.904	2025689.535	77.92104342	18.29855011	
T267	808799.316	2025757.172	77.92092526	18.29916260	
T268	808819.737	2025878.222	77.92113657	18.30025231	
T269	808847.513	2026013.957	77.92141961	18.30147352	
T270	808900.979	2026105.376	77.92193871	18.30229098	
T271	808902.832	2026136.535	77.92196094	18.30257197	
T272	808876.410	2026183.828	77.92171841	18.30300269	
T273	808755.622	2026203.321	77.92057990	18.30319611	
T274	808703.808	2026229.529	77.92009422	18.30344017	
T275	811594.269	2021797.806	77.94673290	18.26301794	
T276	811560.779	2021892.778	77.94643096	18.26388008	
T277	811540.677	2021960.725	77.94625139	18.26449632	
T278	811552.141	2022073.854	77.94637694	18.26515580	
T279	811568.865	2022188.035	77.94655236	18.26654400	
T280	811583.196	2022298.603	77.94670461	18.26753995	
T281	811580.400	2022336.854	77.94668403	18.26788562	
T282	811569.468	2022367.072	77.94658535	18.26815997	
T283	811532.441	2022395.274	77.94623981	18.26841992	
T284	811437.523	2022426.708	77.94534782	18.26871747	
T285	811323.088	2022458.727	77.94427150	18.26902315	
T286	811238.854	2022482.283	77.94347924	18.26924803	
T287	811208.455	2022492.715	77.94319361	18.26934662	
T288	811136.831	2022541.470	77.94252432	18.26979712	
T289	811070.774	2022602.289	77.94190946	18.27035570	
T290	810999.103	2022677.731	77.94124379	18.27104709	
T291	810937.188	2022773.554	77.94067338	18.27192103	
T292	810893.440	2022849.788	77.93928029	18.27263077	
T293	810788.517	2022881.147	77.93844020	18.27292682	
T294	810699.099	2022902.789	77.93800078	18.27312897	
T295	810652.244	2022922.587	77.93778769	18.27331101	
T296	810629.371	2022979.481	77.93738072	18.27383094	
T297	810585.383	2022979.481	77.93738072	18.27383094	

Id	Length_m	width_m	Area_Ha
1	1548.00	0.45	0.0697
2	512.65	0.45	0.0231
3	882.02	0.45	0.0397
4	3611.87	0.45	0.1625
5	1780.09	0.45	0.0801
<b>Total</b>	<b>8334.63</b>	<b>0.45</b>	<b>0.3751</b>

**Legend**

- DGPS Surveyed Points
- Area Proposed for Diversion (UG)

Geographic Coordinate System - WGS84 Datum ( UTM 43N )

0 1,000 2,000 4,000 Meters

77°52'0"E 77°54'0"E 77°56'0"E 77°58'0"E

18°22'0"N 18°20'0"N 18°18'0"N 18°16'0"N