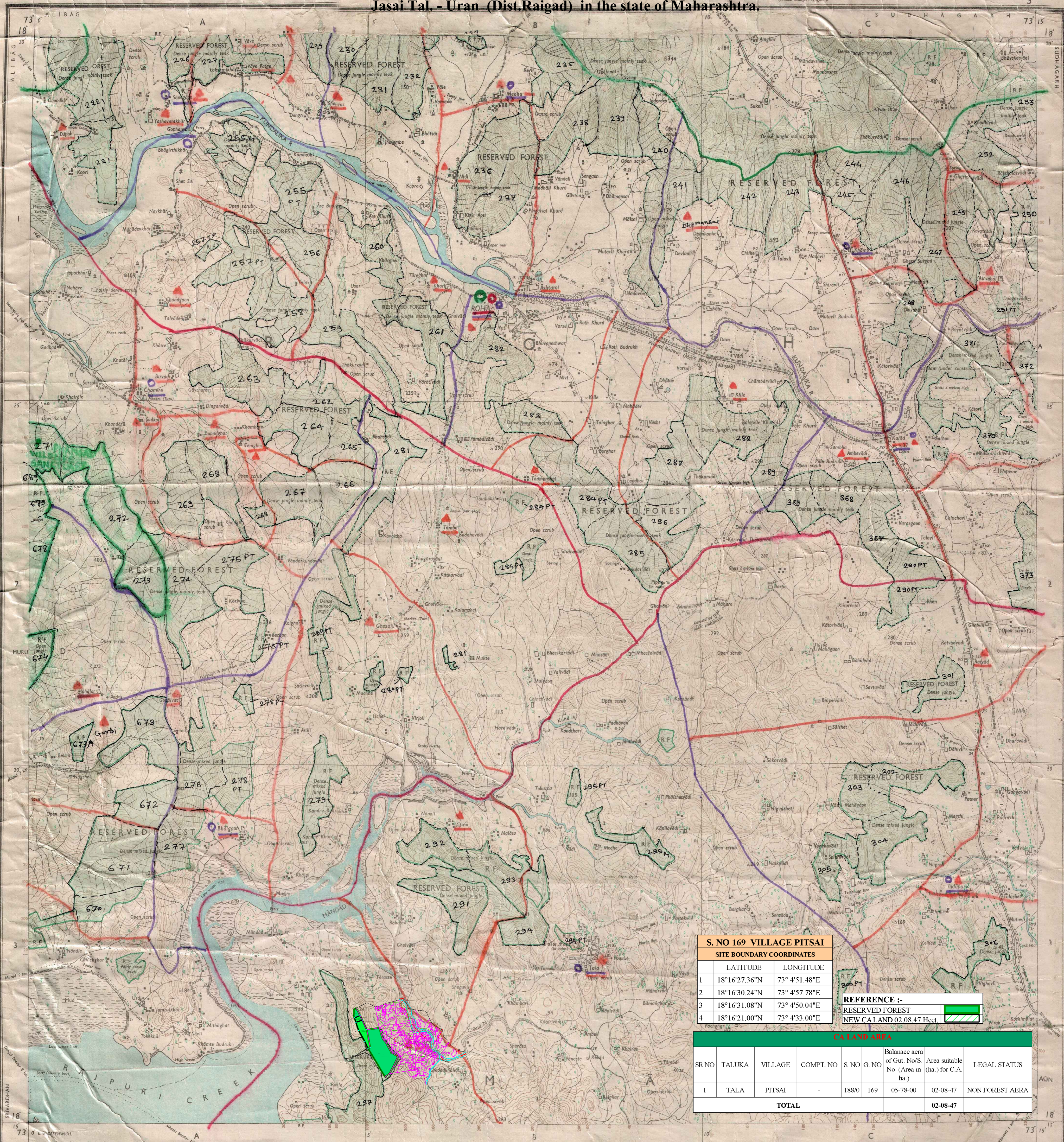


INDEX MAP
Compensatory Land in Sy. No 169 Part Village Pitsai Tal. Tala Dist. Raigad Forest Division Roha, Range Tala in lieu of Diversion of 2.0847 ha. area for Construction of Sewri & Nhava up to NH-4B in Private Forest area in village Jasai Tal. - Uran (Dist Raigad) in the state of Maharashtra.



S. NO 169 VILLAGE PITSAI	
SITE BOUNDARY COORDINATES	
LATITUDE	LONGITUDE
1 18°16'27.36"N	73° 4'51.48"E
2 18°16'30.24"N	73° 4'57.78"E
3 18°16'31.08"N	73° 4'50.04"E
4 18°16'21.00"N	73° 4'33.00"E

REFERENCE :-
 RESERVED FOREST
 NEW C.A LAND 02.08.47 Hect

C.A. LAND AREA						
SR NO	TALUKA	VILLAGE	COMPT. NO	S. NO	G. NO	Balance area of Gut. No/S. Area suitable No (Area in (ha.) for C.A. LEGAL STATUS
1	TALA	PITSAI	-	1880	169	05-78-00 02-08-47 NON FOREST AERA
TOTAL						02-08-47

Index to Sheets

1/1	1/2	1/3
2/1	2/2	2/3
3/1	3/2	3/3

1st Edition 1970.
 (Previous Edition 1:50,000 Scale: 1st Edition 1970)

Published under the direction of Surveyor General of India, 1970.

1:50,000

HEIGHTS & CONTOURS IN METRES
 CONTOUR INTERVAL 20 METRES

Water features are shown in blue where they generally contain water.
 Contour areas are coloured yellow.
 The exterior boundaries of areas of Reserved or Protected Forests are shown by green islands.
 Contours are approximate.
 A relative height, (R.H.), represents the approximate height, in metres, between the top and bottom of a steep slope.
 Wooded areas are coloured green. Scattered trees and other vegetation are in green, but prominent surveyed trees are in black.
 *Not applicable.

Administrative Index

KOLABA

Scale: 1:50,000

Price: Five Rupees.