

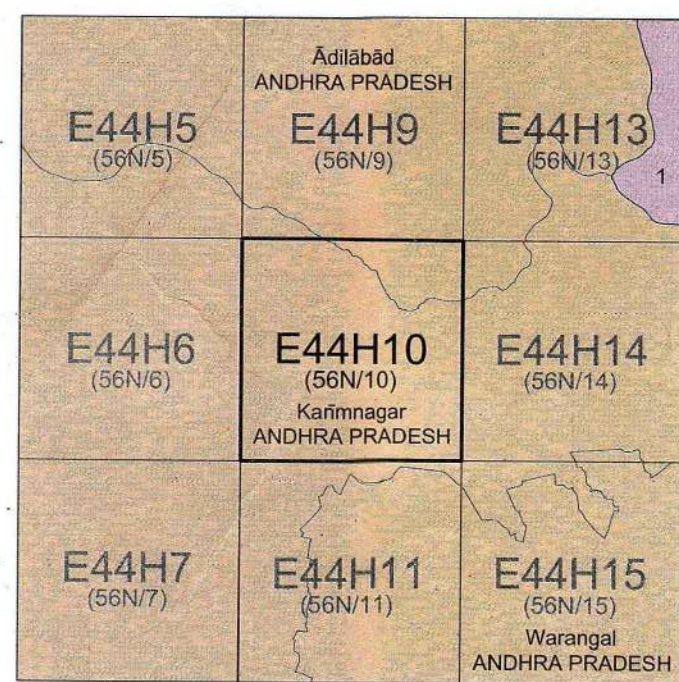


निर्वात के लिए नहीं NOT FOR EXPORT

OPEN SERIES
MAP

No. E44H10

Scale 1:50,000



1. Garhchiroli, MAHARASHTRA.

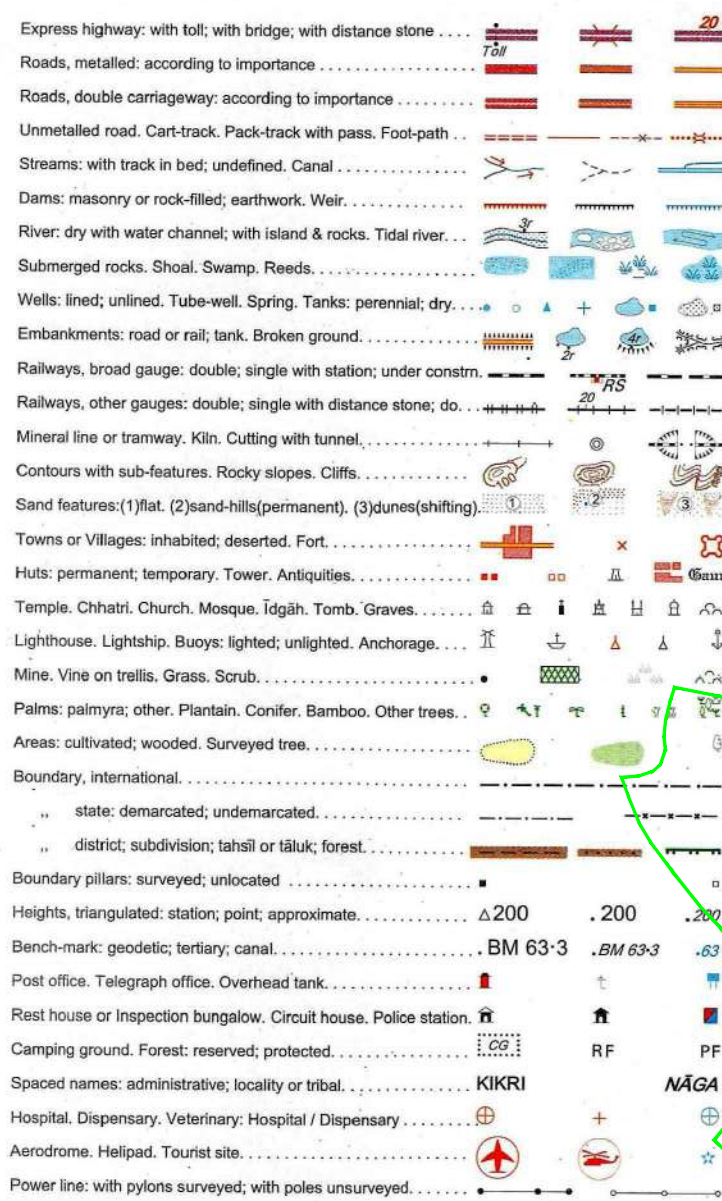
भारतीय सर्वेक्षण विभाग

SURVEY OF INDIA

1st Edition 2009.

Price : Rs. 50/-

CONVENTIONAL SYMBOLS

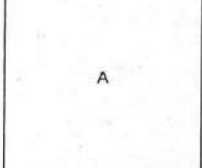


NOTES :-

Heights are in metres and above Indian mean sea level.
Contours are approximate.
A relative height, e.g. 8r, represents the approximate height, in metres, between the top and bottom of a steep slope.
The triangulated heights and contours in this sheet have not been adjusted to the heights of the spirit-levelled bench marks and may not be strictly in accordance with them.
Unmetalled roads are usually motorable and cart-tracks passable in dry season.
The major administrative partitions of districts in Andhra Pradesh State are called 'Mandals' and their boundaries are shown by black boundary symbol.
The district boundary in the Godavari River follows the main deep water channel and will change with the fluctuations of that channel.
Some of the features or symbols will appear from next edition only.

COMPILATION INDEX

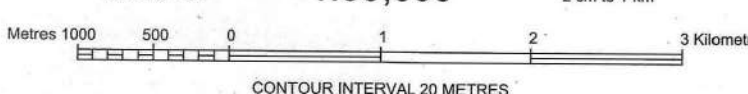
A. Surveyed during 1975-76. Updated for major details during 2005-06.



Projection - UTM Datum - WGS 84

Magnetic Variation from True North about 1° West in 2005.
(Annual change negligible).

1:50,000



CONTOUR INTERVAL 20 METRES

For further details about this map, please contact

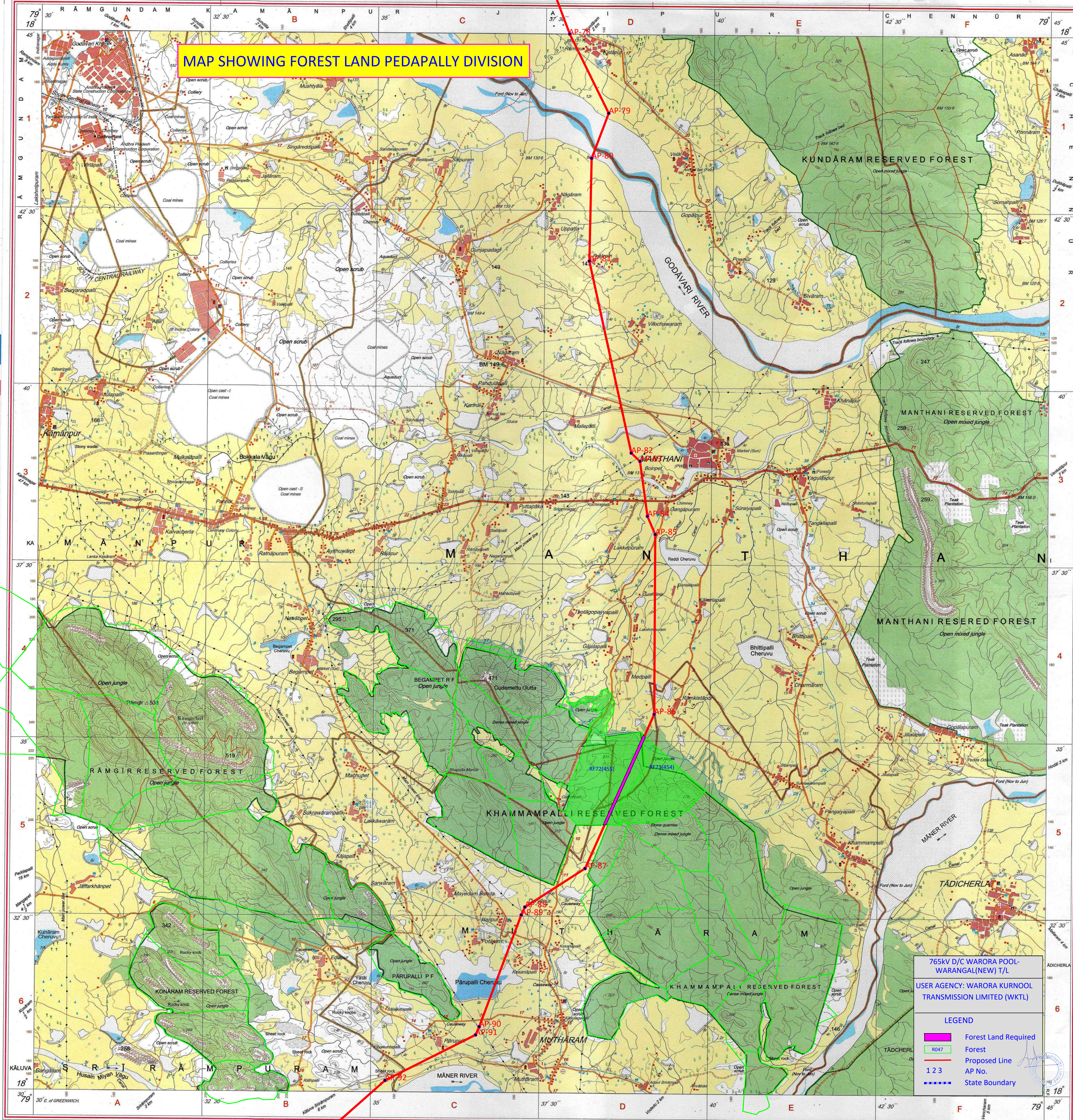
Director
Andhra Pradesh Geo-Spatial Data Centre
Survey of India, Uppal
Hyderabad.
Fax : 040 - 27202059

WEBSITE - www.surveyofindia.gov.in

Reproduction in whole or part by any means is prohibited
without the written permission of Survey of India, the
National Mapping Agency.

GOVERNMENT OF INDIA COPYRIGHT, 2009.

MAP SHOWING FOREST LAND PEDAPALLY DIVISION



765KV D/C WARORA POOL-
WARANGAL(NEW) T/L
USER AGENCY: WARORA KURNOOL
TRANSMISSION LIMITED (WKTL)

LEGEND

- Forest Land Required
- R047 Forest
- Proposed Line
- AP No.
- State Boundary

REG. No. 308 (01)-WPG D/09 (Andhra Pradesh G.D.C. 1:50,000) 1515.

भारत के सर्वेक्षक के नियंत्रण में प्रकाशित,
Published under the direction of Surveyor General of India,
Survey of India, Hattibarkala Estate, Post Box No. 37, Dehra Dun-248001 (Uttarakhand)
Department of Science & Technology, Government of India.

PRINTED AT THE WESTERN PRINTING GROUP OF SURVEY OF INDIA.