

No. E44B8

Scale 1:50,000

| | | |
|---|--|--------------------|
| E44B3 (56M/3) | E44B7 (56M/7) | E44B11 (56M/11) |
| E44B4 (56M/4) | Adalabad ANDHRA PRADESH E44B8 (56M/8) | E44B12 (56M/12) |
| E44H1 (56N/1) Karnimnagar ANDHRA PRADESH | E44H5 (56N/5) | E44H9 (56N/9) |

1 Chandrapur, MAHARASHTRA.

भारतीय सर्वेक्षण विभाग SURVEY OF INDIA

1st Edition 2012.

Price: Rs. 85/-

CONVENTIONAL SYMBOLS

| | |
|---|-----|
| Express highway: with toll; with bridge; with distance stone | ... |
| Roads, metalled: according to importance | ... |
| Roads, double carriageway: according to importance | ... |
| Unmetalled road: Cart-track. Pack-track with pass. Foot path | ... |
| Streams: with track in bed; undefined. Canal | ... |
| Dam: masonry or rock-filled; earthenwork. Weir | ... |
| River: dry with water channel; with island & rocks. Tidal river | ... |
| Submerged rocks. Shoal. Swamp. Reeds | ... |
| Wells: lined; unlined. Tube-well. Spring. Tanks: perennial; dry | ... |
| Embankments: road or rail; tank. Broken ground | ... |
| Railways, broad gauge: double; single with station; under constr. | ... |
| Railways, other gauges: double; single with distance stone; do | ... |
| Mineral line or tramway. Kin. Cutting with tunnel | ... |
| Contours with sub-features. Rocky slopes. Cliffs | ... |
| Sand features: (1) flat. (2) sand-hills (permanent). (3) dunes (shifting) | ... |
| Towns or Villages: inhabited; deserted. Fort | ... |
| Huts: permanent; temporary. Tower. Antiquities | ... |
| Temple. Chhatri. Church. Mosque. Idgah. Tomb. Graves | ... |
| Lighthouse. Lightship. Buoy: lighted; unlighted. Anchorage | ... |
| Mine. Vine on trellis. Grass. Scrub | ... |
| Palms: palm-tree; other. Plantain. Conifer. Bamboo. Other trees | ... |
| Areas: cultivated; wooded. Surveyed tree | ... |
| Boundary: international | ... |
| state: demarcated; undemarcated | ... |
| district: subdivision; tahsil or taluk; forest | ... |
| Boundary pillars: surveyed; unlocated | ... |
| Heights, triangulated: station; point; approximate | ... |
| Bench-mark: geodetic; tertiary; canal | ... |
| Post office. Telegraph office. Overhead tank | ... |
| Rest house or inspection bungalow. Circuit house. Police station | ... |
| Camping ground. Forest: reserved; protected | ... |
| Spaced names: administrative; locality or tribal | ... |
| Hospital. Dispensary. Veterinary Hospital / Dispensary | ... |
| Aerodrome. Helipad. Tourist site | ... |
| Power line: with pylons surveyed; with poles unsurveyed | ... |

NOTES

Contours are approximate.
Heights are in metres and above Indian mean sea level.
A relative height, e.g., 40, represents the approximate height, in metres, between the top and bottom of a steep slope.
The major administrative partitions of districts in Andhra Pradesh State are called 'Mandals' and their boundaries are shown by black boundary symbol.

COMPILATION INDEX

A Surveyed during 1975-76. Updated for major details during 2005-06.

Projection - UTM Datum - WGS 84

Magnetic Variation from True North about 1° West in 2005.
(Annual change negligible).

1:50,000

Metres 1000 500 0 1 2 3 Kilometres

CONTOUR INTERVAL 20 METRES

For further details about this map, please contact

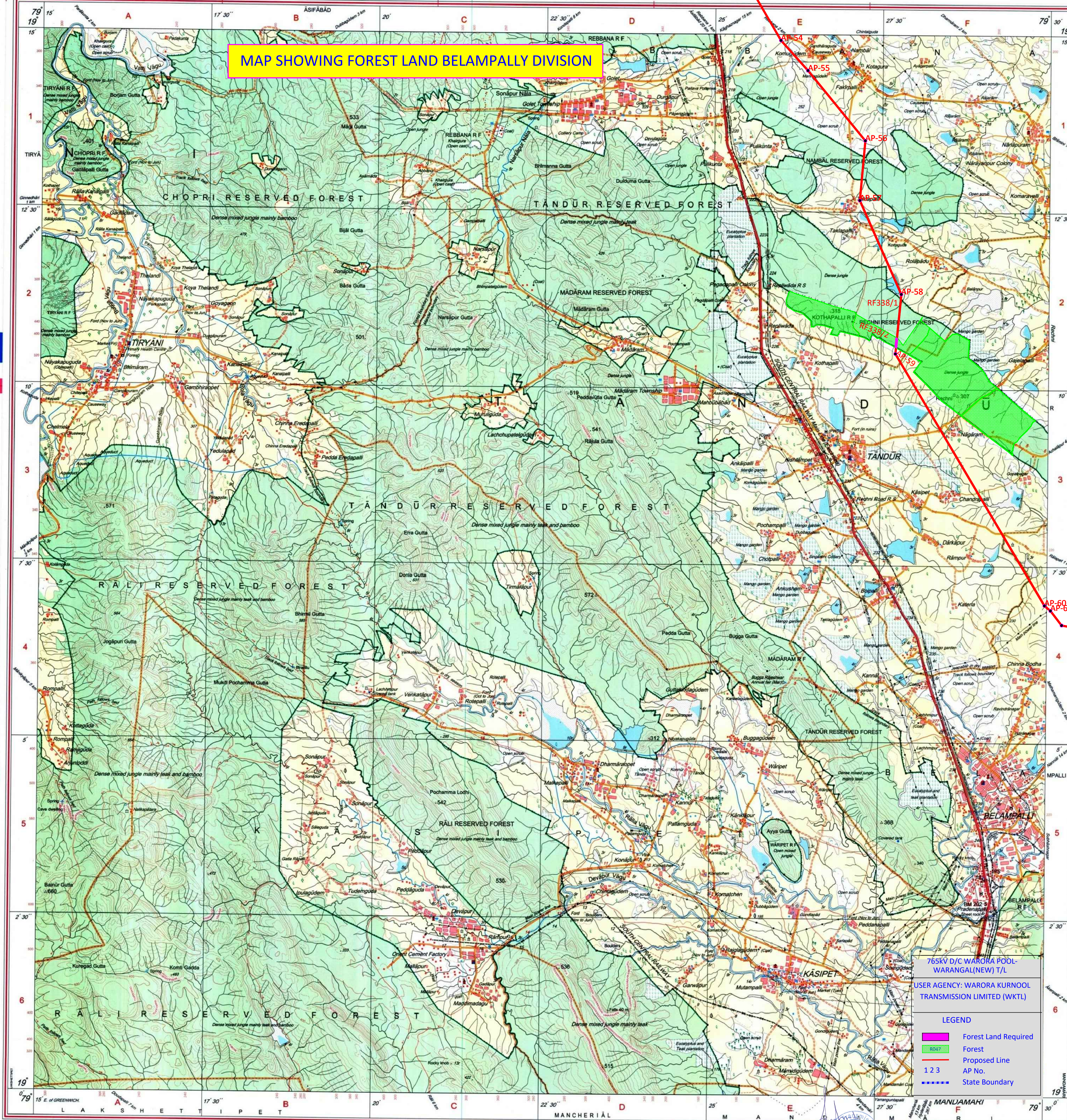
Director
Andhra Pradesh Geo-Spatial Data Centre
Survey of India, Uppal
Hyderabad.

WEBSITE - www.surveyofindia.gov.in

Reproduction in whole or part by any means is prohibited
without the written permission of Survey of India, the
National Mapping Agency.

GOVERNMENT OF INDIA COPYRIGHT, 2012.

MAP SHOWING FOREST LAND BELAMPALLY DIVISION



765KV D/C WARORA POOL-
WARANGAL(NEW) T/L

USER AGENCY: WARORA KURNOOL
TRANSMISSION LIMITED (WKTL)

LEGEND

| | |
|----------------------|--------|
| Forest Land Required | Forest |
| Proposed Line | AP No. |
| State Boundary | |

MANJAMAKI



निर्गत के लिए नहीं NOT FOR EXPORT

OPEN SERIES
MAP

No. E44H9

Scale 1:50,000

| | | |
|------------------|--------------------|--------------------|
| E44B8 (56M/8) | E44B12 (56M/12) | E44B16 (56M/16) |
| E44H5 (56N/5) | E44H9 (56N/9) | E44H13 (56N/13) |
| E44H6 (56N/6) | E44H10 (56N/10) | E44H14 (56N/14) |

1. Garhchiroli, MAHARASHTRA.
2. Warangal, ANDHRA PRADESH.

भारतीय सर्वेक्षण विभाग

SURVEY OF INDIA

1st Edition 2009.

Price : Rs. 50/-

CONVENTIONAL SYMBOLS

| | |
|---|--|
| Express highway with toll; with bridge; with distance stone | |
| Roads, metalled; according to importance | |
| Unmetalled road. Cart-track. Pack-track with pass. Foot-path | |
| Streams with track in bed; undefined. Canal | |
| Dams: masonry or rock-filled; earthwork. Weir | |
| River dry with water channel; with island & rocks. Tidal river | |
| Submerged rocks. Shoal. Swamp. Reeds | |
| Wells: lined; unlined. Tube-well. Spring. Tanks: perennial; dry | |
| Embankments: road or rail; tank. Broken ground | |
| Railways, broad gauge; double; single with station; under construction | |
| Mineral line or tramway. Kin. Cutting with tunnel | |
| Contours with sub-features. Rocky slopes. Cliffs | |
| Sand features: (1) flat. (2) sand-hills(permanent). (3) dunes(shifting) | |
| Towns or Villages: inhabited; deserted. Fort | |
| Huts: permanent; temporary. Tower. Antiquities | |
| Temple. Chhatra. Church. Mosque. Dargah. Tomb. Graves | |
| Lighthouse. Lightship. Buoy; lighted; unlighted. Anchorage | |
| Mine. Vine on trellis. Grass. Scrub | |
| Palms: palmyra; other. Plantain. Conifer. Bamboo. Other trees | |
| Areas: cultivated; wooded. Surveyed tree | |
| Boundary: international | |
| state: demarcated; undemarcated | |
| district: subdivided; taluk or taluq; forest | |
| Boundary pillars: surveyed; unlocated | |
| Heights, triangulated; station; point; approximate | |
| Bench-mark: geodetic; tertiary; canal | |
| Post office. Telegraph office. Overhead tank | |
| Rest house or inspection bungalow. Circuit house. Police station | |
| Camping ground. Forest: reserved; protected | |
| Spaced names: administrative; locality or tribal | |
| Hospital. Dispensary. Veterinary. Hospital / Dispensary | |
| Aerodrome. Helipad. Tourist site | |
| Power line: with pylons surveyed; with poles unsurveyed | |

REFERENCE

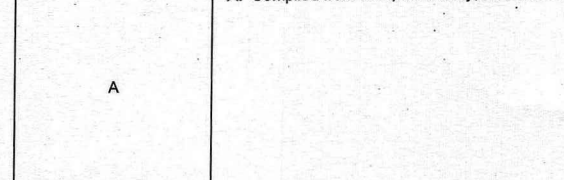
NH 16 National Highway No. 16

NOTES :-

Contours are approximate.
Heights are in metres and above Indian mean sea level.
A relative height, e.g. 50, represents the approximate height, in metres, between the top and bottom of a steep slope.
The triangulated heights and contours in this sheet have not been adjusted to the heights of the spirit-levelled bench-marks and may not be strictly in accordance with them.
Unmetalled roads are usually motorable and cart-tracks passable in dry season.
The major administrative partitions of districts in Andhra Pradesh State are called 'Mandals' and their boundaries are shown by thick boundary symbols.
The district boundary between Adilabad and Karimnagar, in the centre of Godavari River is conventional and not demarcated.
Tanks, shown dry, in this area usually contain water from July to December.
Hand pump is shown thus.

COMPILATION INDEX

A. Compiled from 1:25,000 survey; 2002-2003.



Projection - UTM Datum - WGS 84

Magnetic Variation from True North about $1\frac{1}{4}^{\circ}$ West in 2005.
(Increasing by about 1° annually).

1:50,000

500 m to 1 cm
2 cm to 1 km
3 Kilometres

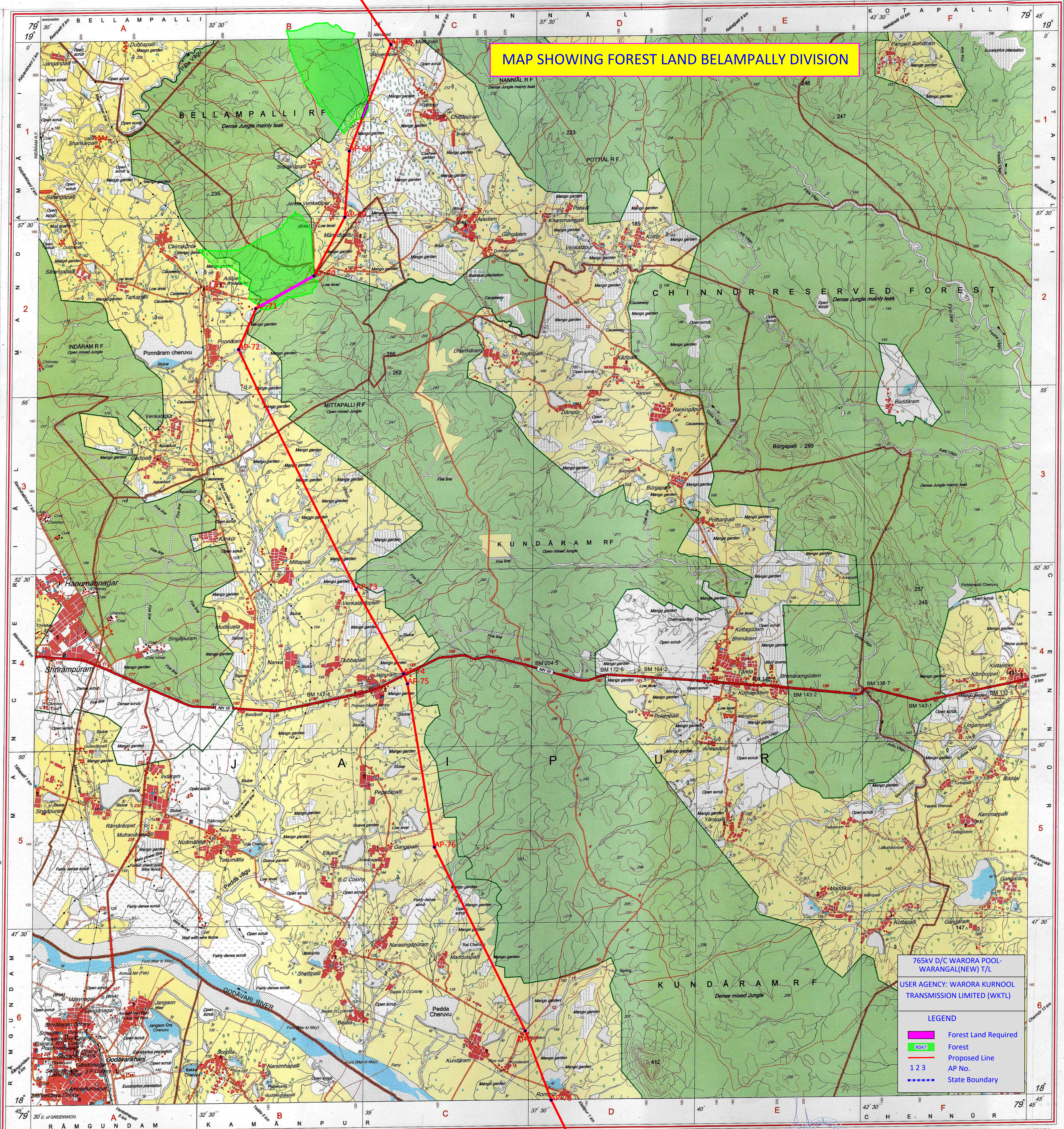
CONTOUR INTERVAL 20 METRES

For further details about this map, please contact
Director
Andhra Pradesh Geo-Spatial Data Centre
Survey of India, Uppal
Hyderabad.
Fax : 040 - 27202059

WEBSITE - www.surveyofindia.gov.in

Reproduction in whole or part by any means is prohibited
without the written permission of Survey of India, the
National Mapping Agency.

MAP SHOWING FOREST LAND BELAMPALLY DIVISION



765KV D/C WARORA POOL-
WARANGAL(NEW) T/L

USER Agency: WARORA KURNOOL
TRANSMISSION LIMITED (WKTL)

LEGEND

| | |
|--|----------------------|
| | Forest Land Required |
| | Forest |
| | Proposed Line |
| | AP No. |
| | State Boundary |

REG. No.310 60-WPG D08 (Andhra Pradesh GDC-1:50,000)-151 S.

भारत के सर्वेक्षण के निदेशन में प्रकाशित
Published under the direction of Surveyor General of India,
Survey of India, Hattibarkala Estate, Post Box No.37, Dehra Dun-248001 (Uttarakhand)
Department of Science & Technology, Government of India.

PRINTED AT THE WESTERN PRINTING GROUP OF SURVEY OF INDIA.