

निर्यात के लिए नहीं NOT FOR EXPORT

OPEN SERIES  
MAP

No. F42Q8

Scale 1:50,000

F42Q3 (41K/3)	F42Q7 (41K/7)	F42Q11 (41K/11)
F42Q4 (41K/4)	Jünegadh GUJARAT F42Q8 (41K/8)	F42Q12 (41K/12)
F42W1 (41L/1)	F42W5 (41L/5)	F42W9 (41L/9)

भारतीय सर्वेक्षण विभाग

SURVEY OF INDIA

1st Edition 2011.

Price : Rs. 70/-

### CONVENTIONAL SYMBOLS

Access highway with toll bridge with distance scale		20
Roads, metalled: according to importance		
Roads, double carriageway: according to importance		
Unmetalled road: Car-truck, Pick-up truck with pass. Food-poly		
Streams with track in bed, underfed: Canal		
Dams: masonry or rock-filled, earthenwork. Weir		
Flow, dry with water channel: with islands & banks. Tide river		
Submerged rocks. Sand. Swamp. Deltas		
Wells: lined, unlined. Spring. Trench: perennial, dry		
Frontier, border: open, double, single with station, under control		
Open, open: gully, drainage, ditch with distance scale, dyke		
Mine: iron or heavy, dig. Kiln: Celling with tunnel		
Cottages with verandahs: Rocky slopes, cliffs		
Salt features (1/100) (Zsands) (Permian) (Zdunes) (Hills)		
Towns or Villages: inhabited, deserted. Fort		
Hulk: permanent, temporary. Tower. Antiquities		
Temple, Chattr: Church, Mosque, Jain, Pagoda, Chavara		
Lighthouse. Lighthouse. Buoy: lighted, unlighted. Anchorage		
Mine: Vase on mells, Ganga. Corral		
Palace, palace, other, Pashan, Corral: Bamboo, Other trees		
Frontier, international: Surveyed line		
Boundary, international		
state demarcated, un-demarcated		
district subdivision: land or tillic: forest		
Boundary others: surveyed, un-surveyed		
Hollow, triangular: station, peak: approximate		2000      200
Beach: mch. pebbles, tertiary, coral		BM 63-3      BM 63-3
Post office: Overhead line		
Rail road or Inspection bungalow. Circuit house. Police station		
Camping ground. Forest: reserved, protected		
Green road: administrative, locality or tribal		
Depot: Diesel, Railway: Hospital / Dispensary		
Armedness, Indian: Tourist: auto		
Power line: with poles surveyed, with poles unsurveyed		

Village - Amrapur (Kathi) S.No.-87 Paiki P.F.  
C.A. 1.00 ha.  
11 kv overhead electric line karsangadh  
Diversion area 0.1540 ha.

## REFERENCE

**REFERENCE**  
*NH 80* National Highway No. 80.

NOTES :-

Height and contours have not been shown.  
A relative height,  $\Delta z$ , represents the approximate height, in metres, between the top and bottom of a steep slope.  
Tanks in this area usually contain water from July to September.  
Cultivation is periodic and dependent on rainfall.  
Gir Reserved Forest area is not included in any block.

COMPILATION INDEX

A. Surveyed during 1962-63. Updated for major details during 2005-06

Projection - UTM      Datum - WGS 84

Magnetic Variation from True North about  $\frac{1}{2}^{\circ}$  West in 2005.

1:50,000

Metres 1000	500	0	1	2	3 Kilometres
-------------	-----	---	---	---	--------------

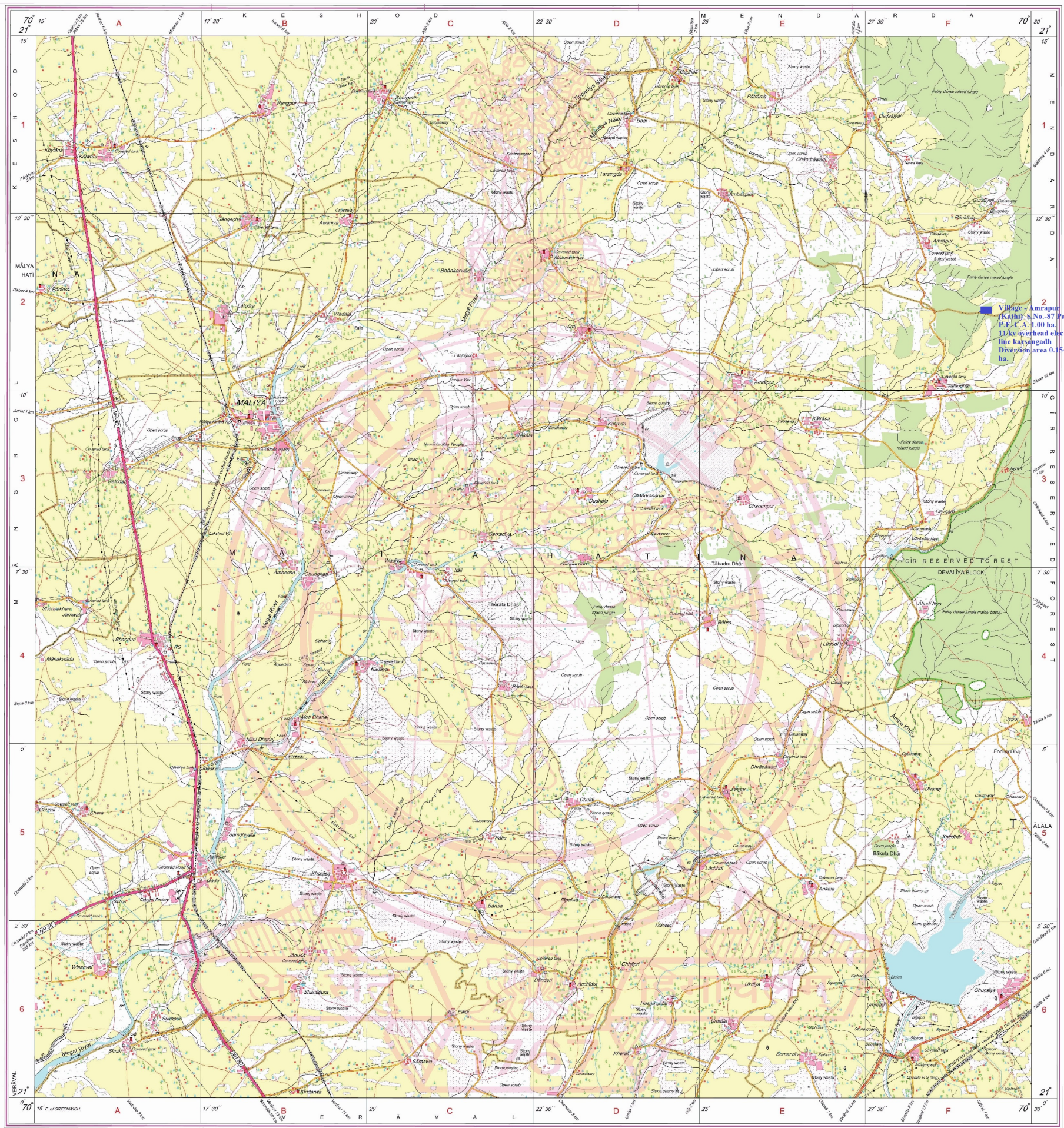
For further details about this map, please contact

Director  
Sat, Damam & Diu Geo-Spatial Data Centre  
Survey of India, Sector 10-A  
Gandhinagar

WEBSITE - [www.surveyofindia.gov.in](http://www.surveyofindia.gov.in)

Reproduction in whole or part by any means is prohibited without the written permission of Survey of India, the National Mapping Agency.

GOVERNMENT OF INDIA COPYRIGHT, 2011



REG. No. PDF -SPG D'11 (G D &amp; D GDC-150,000)

भारत के महासर्वेक्षक, स्वर्ण सुब्बा राव, बी०ई०, के निदेशन में प्रकाशित,  
Published under the direction of Swarna Subba Rao, B.E., Surveyor General of India,  
Survey of India, Hāthibarkala Estate, Post Box No.37, Dehra Dūn-248001 (Uttarākhand)  
Department of Science & Technology, Government of India.

PRINTED AT THE SOUTHERN PRINTING GROUP OF SURVEY OF INDIA