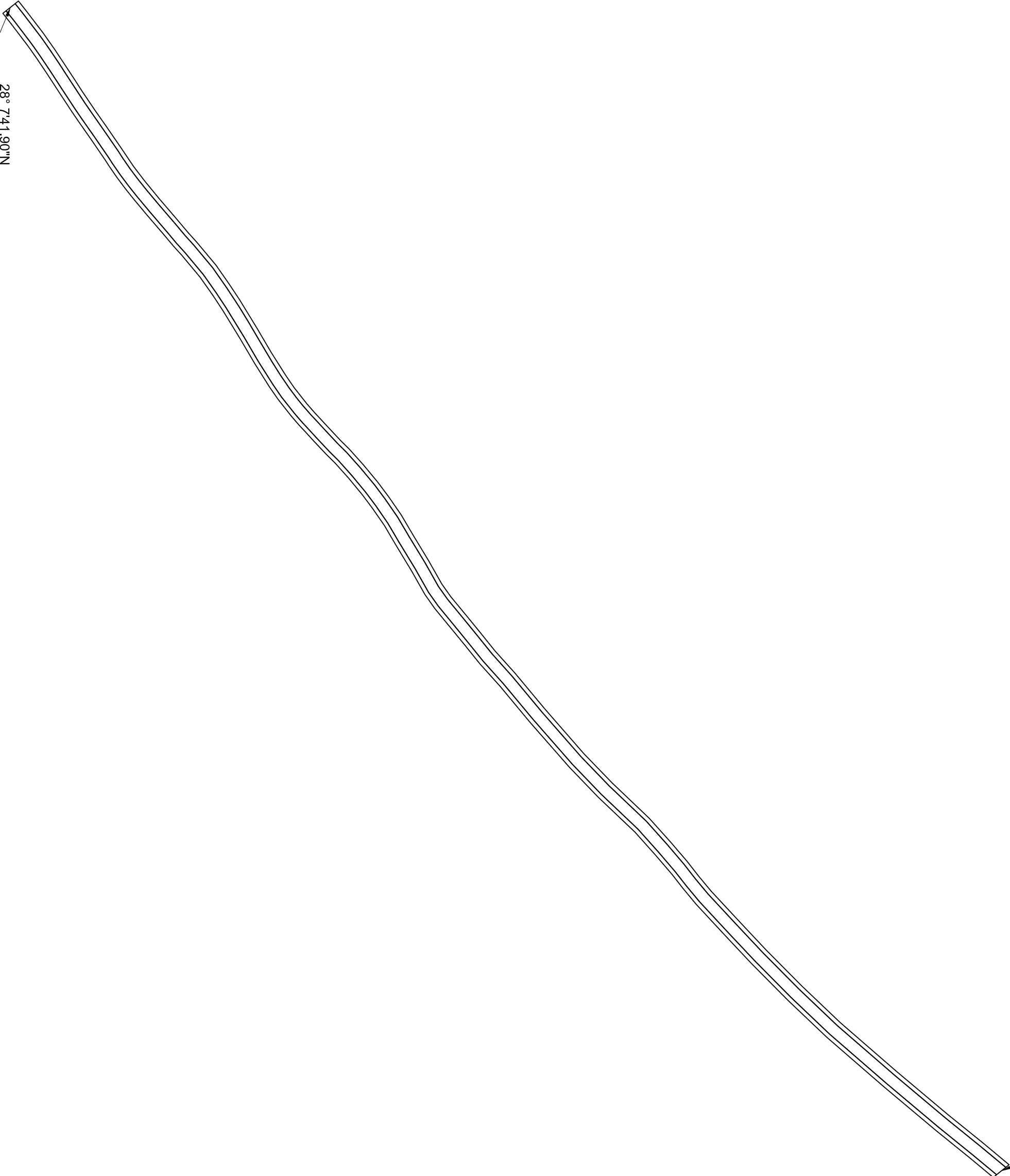


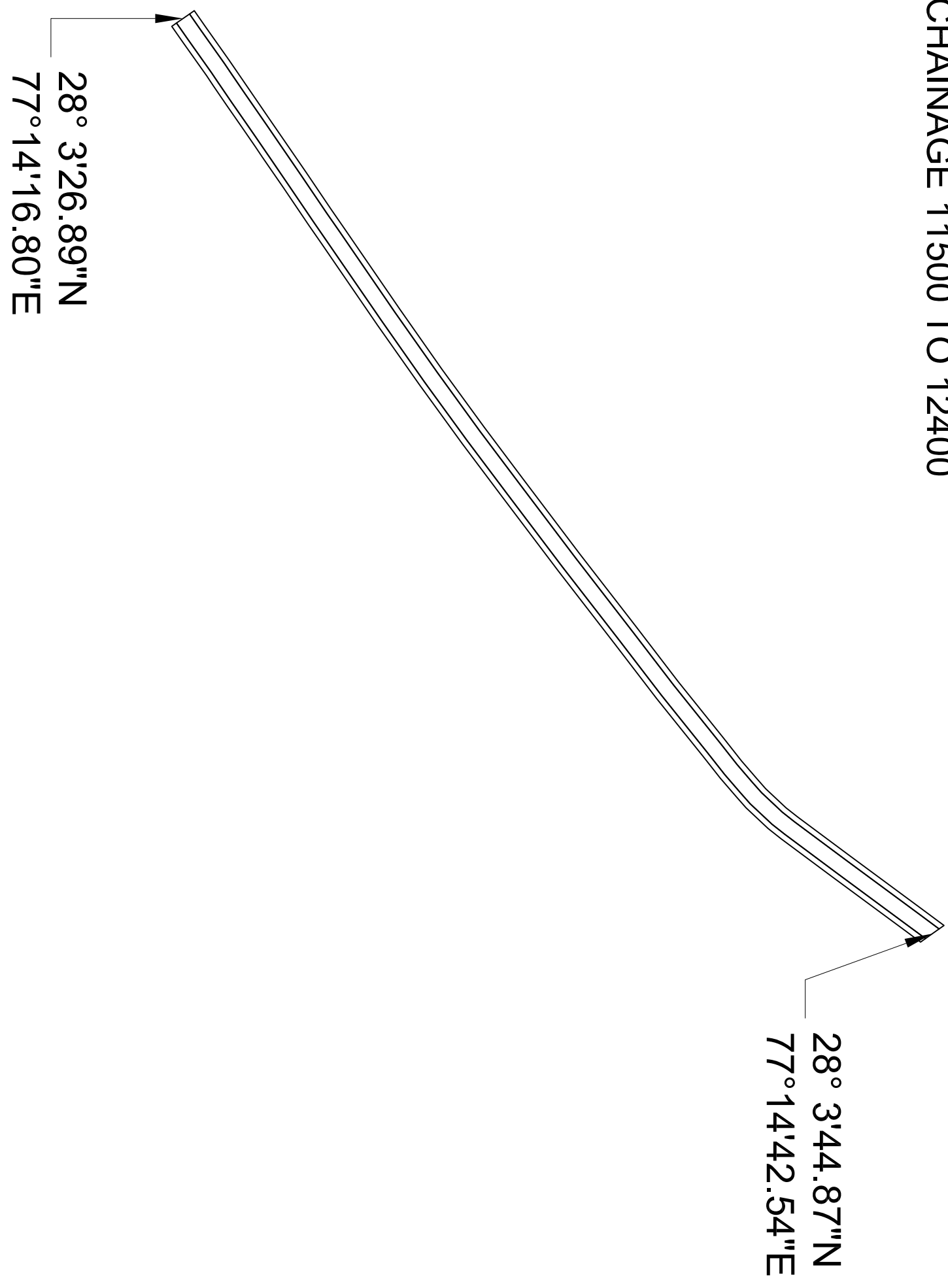
IMPROVEMENT OF PALWAL HATHIN UTTAWAR ROAD (MDR-135) BY FOUR
LANING/RISING/CC PAVEMENT/STRENGTHENING FROM KM 0.0 TO KM 22.40
IN PALWAL AND NUH DISTRICT (LENGTH 22.400)
CHAINAGE 400 TO 2000

28° 8'14.60"N
77°18'58.60"E

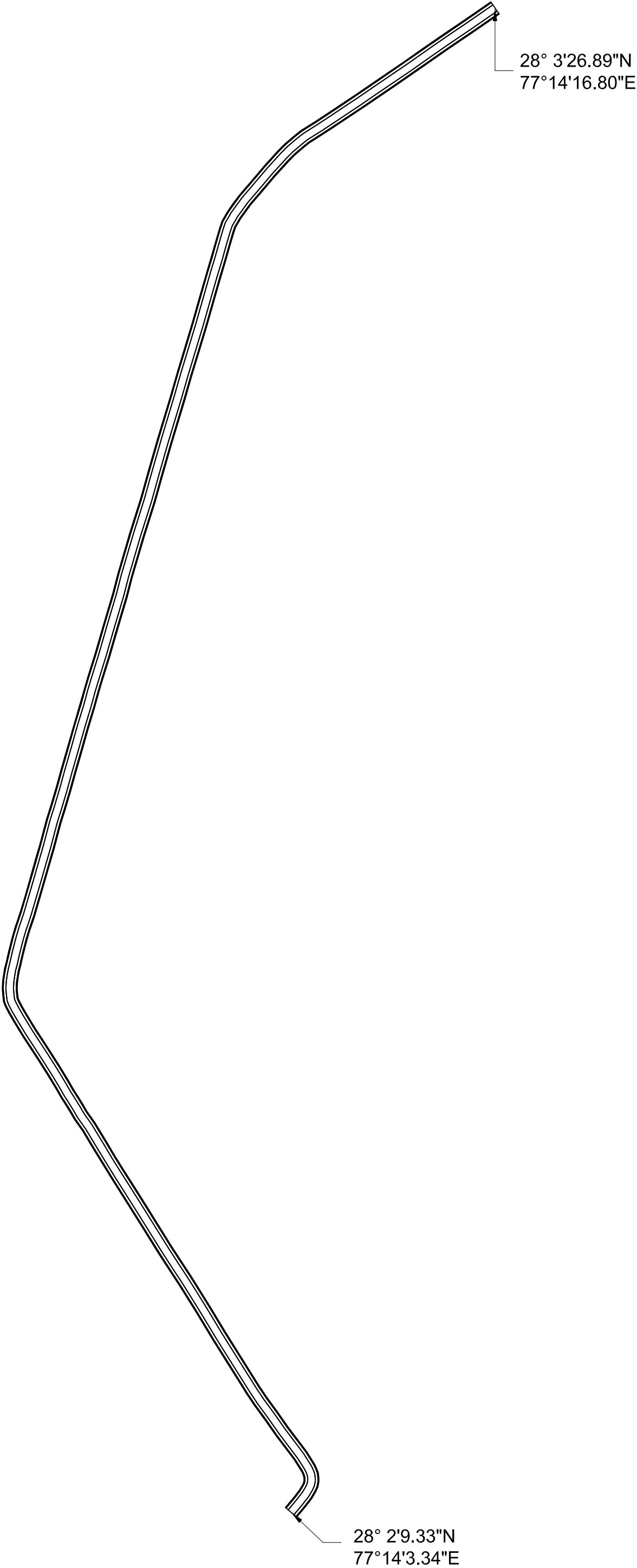
28° 7'41.90"N
77°18'13.46"E



IMPROVEMENT OF PALWAL HATHIN UTTAWAR ROAD (MDR-135) BY
FOUR LANING/RISING/CC PAVEMENT/STRENGTHENING FROM KM 0.0
TO KM 22.40 IN PALWAL AND NUH DISTRICT (LENGTH 22.400)
CHAINAGE 11500 TO 12400



IMPROVEMENT OF PALWAL HATHIN UTTAWAR ROAD (MDR-135) BY
FOUR LANING/RISING/CC PAVEMENT/STRENGTHENING FROM KM 0.0
TO KM 22.40 IN PALWAL AND NUH DISTRICT (LENGTH 22.400)
CHAINAGE 12400 TO 15200



Chainge			Length	Area to be cleared Width	Existing Formation/ Toe Width	Additional Width for the Forest Diversion (W)	Drain Width to be cleared (D) Both Side	Forest Area
400	To	2000	1600			8.70		13920
					12.00			
				20.70				
11500	To	12400	900			8.70		7830
					12.00			
				20.70				
12400	To	15200	2800			8.70		24360
					12.00			
				20.70				
							1.5	8400
21400	To	22200	800			8.70		6960
					12.00			
				20.70				
							1.5	2400
Total								63870

IMPROVEMENT OF PALWAL HATHIN UTTAWAR ROAD (MDR-135) BY
FOUR LANING/RISING/CC PAVEMENT/STRENGTHENING FROM KM
0.0 TO KM 22.40 IN PALWAL AND NUH DISTRICT (LENGTH 22.400)
CHAINAGE 21400 TO 22200

27°59'34.88"N
77°11'35.76"E

27°59'21.08"N
77°11'10.97"E

