

भारतीय सर्वेक्षण विभाग SURVEY OF INDIA

1st Edition 2011. Price: ₹ 70/-

CONVENTIONAL SYMBOLS

- Express Highway: with toll, with bridge, with distance stone
- Roads, metalled: according to importance
- Roads, unmetalled: according to importance
- Unmetalled road, Cart-track, Path with axle, Foot-path
- Stream: with track in bed, underlain, Canal
- Dam: masonry or rock-filled, earthen, Weir
- River dry with water channel, with island & rocks, Tidal river
- Submerged road, Shoal, Swamp, Road
- Well: head unlined, Tube-well, Spring, Tank: perennial, dry
- Embankment: road or rail, trestle, Broken ground
- Railways, broad gauge: double, single with station, under construction
- Railways, other gauge: double single with distance stone, do
- Mineral: line or railway, Kite, Cutting with tunnel
- Cuttings with sea features, Rocky slopes, Cliff
- Sand features: (thin) Sand dunes, (thick) Sand dunes
- Towns or Villages: inhabited, deserted, Fort
- Hut: permanent, temporary, Tower, Antiquity
- Temple, Chhatra, Church, Mosque, Igloo, Tomb, Grave
- Lighthouse, Lightship, Bunker, Lighted, unlighted, Anchorage
- Mine, View on terrain, Glass, Rock
- Palms: palm-tree, other, Plantain, Canebrake, Bamboo, Other trees
- Areas: cultivated, wooded, Surveyed tree
- Boundary, international
- Boundary, surveyed, unmetalled
- Height, triangulation: station point, approximation
- Bench-mark: geodetic, tertiary, canal
- Post office, Telegraph office, Overhead tank
- Rail house or inspection bungalow, Circuit house, Police station
- Camping ground, Forest: reserved, protected
- Spotted names: administrative, locality or tribal
- Hospital, Dispensary, Veterinary, Hospital, Dispensary
- Aerodrome, Helipad, Tourist site
- Power line: with pylons surveyed, with poles unsurveyed

REFERENCES

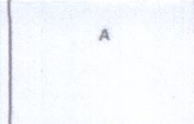
HY 29 National Highway No. 29, 2014; State Highway No. 40.

NOTES

Heights are in metres and above Indian mean sea level.
Contours are approximate.
A relative height, h_r , represents the approximate height, in metres, between the top and bottom of a steep slope.
Contours and unmetalled roads in this sheet are generally metalled in dry season. Permission to use them along roads is required from village authorities.
Tanks, shown dry, in this area usually contain water from July to March.
Wells and tube-wells are numerous throughout the sheet; only the important ones have been shown.
The district boundary in the Ganga River follows the main deep water channel and will change with the fluctuations of the river channel.
The area adjoining the Ganga River is liable to change owing to constant fluctuation in the course of the river.

COMPILED INDEX

A. Surveyed during 1977-78. Updated for major details during 2007-08.



Projection - UTM Datum - WGS 84

Magnetic Variation from True North about 1/4° East in 2005.

(Increasing by about 1/4° annually).

1:50,000

CONTOUR INTERVAL 20 METRES

For further details about this map, please contact

Additional Surveyor General

Uttarakhand and West Uttar Pradesh Geo-Spatial Data Centre

Survey of India, 17 E.C. Road

Dehra Dun,

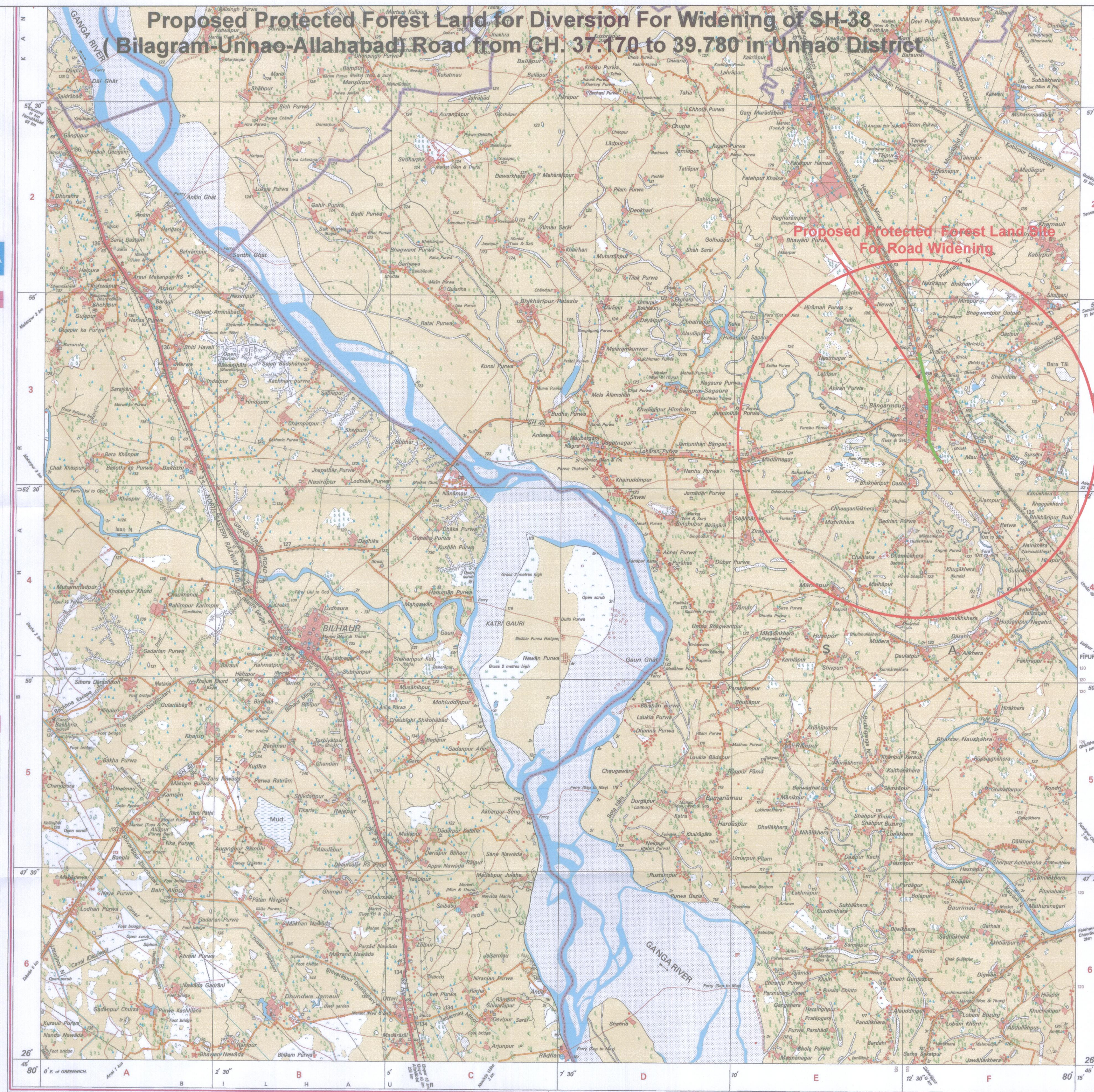
Web site - www.surveyofindia.gov.in

Reproduction in whole or part by any means is prohibited without the written permission of Survey of India, the National Mapping Agency.

Legend

Forest Land Proposed to be Diverted for Road Widening

Located at: D:\Work\50\OSM\UAGD\10 SHEETS MAR 10\3 gis\exp\exp\G441_63b1_01Apr10.GRS | Size: 613.85 x 654.204 mm | Date: 22-JUN-12 - 14:35:36 | SmartID: 4VNDJ6 | Resolution: ppi | Dot | Inks: Yellow Cyan Magenta Black | Configuration: bctans1.ppt | Emulsion: Right Reading |



भारत के सर्वेक्षण सर्वेक्षण विभाग, भारत, के अधिकार में प्रकाशित।
Published under the direction of Swami Subba Rao, B.E., Surveyor General of India,
Survey of India, Hathi Bazar Estate, Post Box No. 37, Dehra Dun - 248001 (Uttarakhand),
Department of Science & Technology, Government of India.

PRINTED AT THE WESTERN PRINTING GROUP OF SURVEY OF INDIA.

अविश्वस्य अविश्वस्य
निष्कर्ष न-1, लोकोपयोगि
उन्नाय