

Power line, with poles surveyed, with poles unsurveyed

REFERENCES
NR ME (MG) NORTHERN RAILWAY Main Line (Metre gauge)
NH 71 NATIONAL HIGHWAY No. 71

NOTES :-
Contours are approximate.
Heights are in metres and above Indian mean sea level.
A relative height, e.g. 3.2, represents the approximate height, in metres, between the top and bottom of a steep slope.
Distance stones along JAWAHAR LAL NEHRU CANAL are 1,000 metres apart and every existing stone is shown, whereas along other canals these are 1,000 feet apart and every existing fifth stone is shown.
Tanks shown dry, in this area usually contain water from July to March.
Unsurfaced roads and cart-tracks in this sheet are generally motorable in dry season. Permission to use those along canals is required from the irrigation authorities.
3,000-acre recontingulation sheets of Bhakra Dam Project survey with their numbers are shown as tertiary bench-marks thus $\dots \dots \dots$ BM 236.3

COMPILATION INDEX
A. Surveyed during 1987-88. Updated for major details during 2004-05.

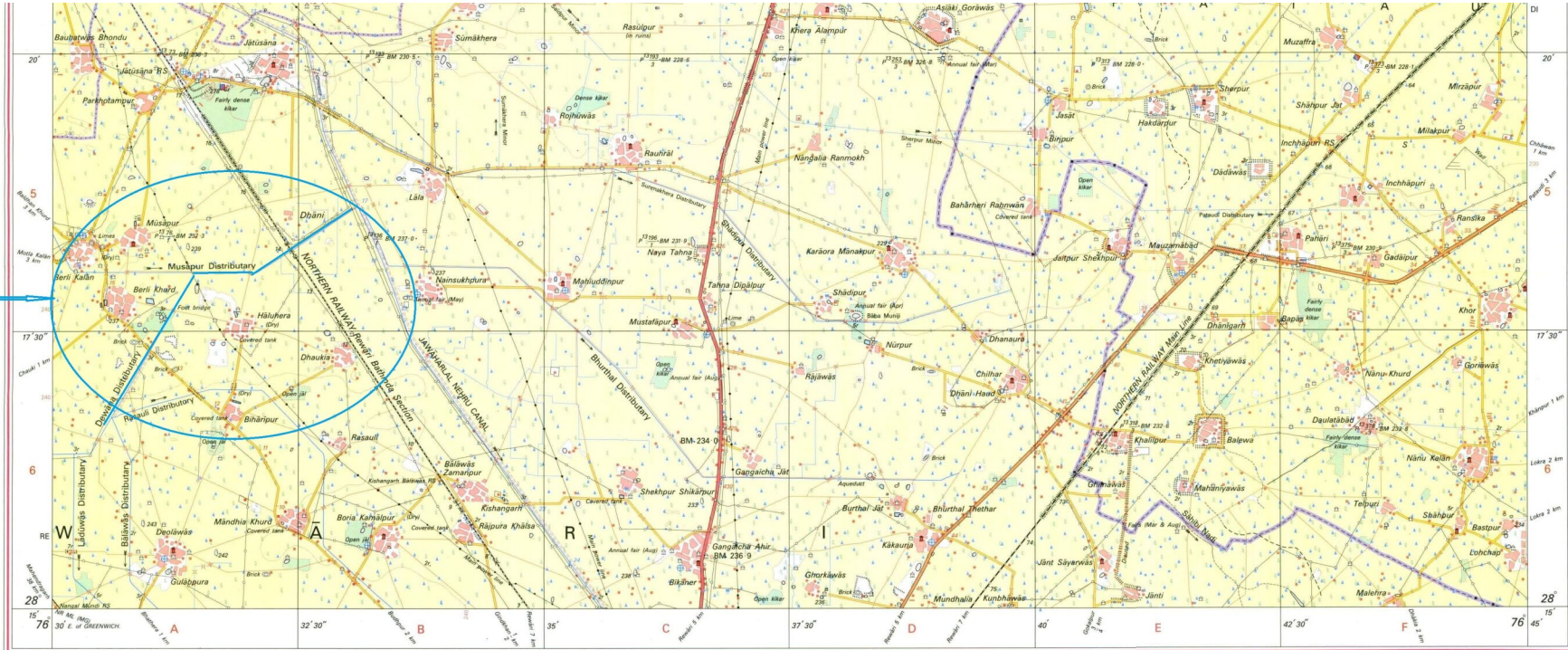
Projection - UTM Datum - WGS 84
Magnetic Variation from True North about $\frac{1}{2}$ East in 2000.
Increasing by about 2' annually.
1:50,000
500 m to 1 cm
2 cm to 1 km
3 Kilometres

For further details about this map, please contact
Director
Haryana Geo-Spatial Data Centre
Survey of India, Sector 32 A
Chandigarh
Fax : 0172 - 2604671

WEBSITE - www.surveyofindia.gov.in

Reproduction in whole or part by any means is prohibited without the written permission of Survey of India, the National Mapping Agency.

GOVERNMENT OF INDIA COPYRIGHT, 2007.



REG. No. 445(G)-NPG D 57 Haryana GDC-150,000-H43W11
Printed under the direction of Major General M. Gopal Rao, B.Tech., P.G.Dip. (Aerial Photo), M.I.M.E., M.C.A., F.I.S., Surveyor General of India,
Survey of India, Hathi Barkala Estate, Post Box No. 37, Dehra Dun - 248001 (Uttarakhand)
Department of Science & Technology, Government of India.
PRINTED AT THE WESTERN PRINTING GROUP OF SURVEY OF INDIA.

