



निर्गत के लिए नहीं NOT FOR EXPORT

No. G43S15

Scale 1:50,000

G43S10 (45D/10)	G43S14 (45D/14)	G43T2 (45H/2)
G43S11 (45D/11)	G43S15 (45D/15)	G43T3 (45H/3)
G43S12 (45D/12)	G43S16 (45D/16)	G43T4 (45H/4)

1 Mehsana, GUJARAT
2 Disputed, GUJARAT, RAJASTHAN.

1st Edition 2011.

Price : Rs. 70/-

CONVENTIONAL SYMBOLS

Express highway, with toll; with bridge; with distance stone	
Roads, metalled; according to importance	
Roads, double cartway; according to importance	
Unmetalled road. Cart-track. Pack-track with pass. Foot-path.	
Streams, with track in bed; undefined. Canal.	
Dams; masonry or rock-filled; earthwork. Weir.	
River, dry with water channel; with island & rocks. Tidal river.	
Submerged rocks. Shoal. Swamp. Reeds.	
Wells, lined, unlined. Tube-well. Spring. Tanks; perennial, dry.	
Embankments; road or rail; tank. Broken ground.	
Railways, broad gauge; double; single with distance stone; do.	
Railways, other gauges; double; single with distance stone; do.	
Mineral line or tramway. Kln. Cutting with tunnel.	
Contours with sub-features. Rocky slopes. Cliffs.	
Sand features: (1) flat. (2) sand-hill (permanent). (3) dunes (shifting).	
Towns or Villages: inhabited; deserted. Fort.	
Huts: permanent; temporary. Tower. Antiquities.	
Temple. Chhatra. Church. Mosque. Igilsh. Tomb. Graves.	
Lighthouse. Lightship. Buoys: lighted; unlighted. Anchorage.	
Mine. Vine on trellis. Grass. Scrub.	
Palms; palmyra; other. Plantain. Conifer. Bamboo. Other trees.	
Areas: cultivated; wooded. Surveyed tree.	
Boundary, international.	
state; demarcated; undemarcated.	
district; subdivision; tahsil or taluk; forest.	
Boundary pillars; surveyed; unlocated.	
Heights, triangulated; station; point; approximate.	
Benchmark; geodetic; tertiary; canal.	
Post office. Telegraph office. Overhead tank.	
Rest house or inspection bungalow. Circuit house. Police station.	
Camping ground. Forest: reserved; protected.	
Spaced names: administrative; locality or tribal.	
Hospital. Dispensary. Veterinary. Hospital / Dispensary.	
Aerodrome. Helped. Tourist site.	
Power line: with pylons surveyed; with poles unsurveyed.	

REFERENCE

NH 14 National Highway No. 14

NOTES

Heights are in metres and above mean sea level.
Contours are approximate.
A relative height, e.g., 8, represents the approximate height, in metres, between the top and bottom of a steep slope.
A relative height, e.g., -8, against a well, indicates its total depth in metres.

COMPILATION INDEX

A Surveyed during 1959-60. Updated for major details during 2005-06.



Projection - UTM Datum - WGS 84

Magnetic Variation from True North about 6' in 2005.

1:50,000

Metres 1000 500 0 1 2 3 Kilometres

CORRUTUR INTERVAL 20 METRES

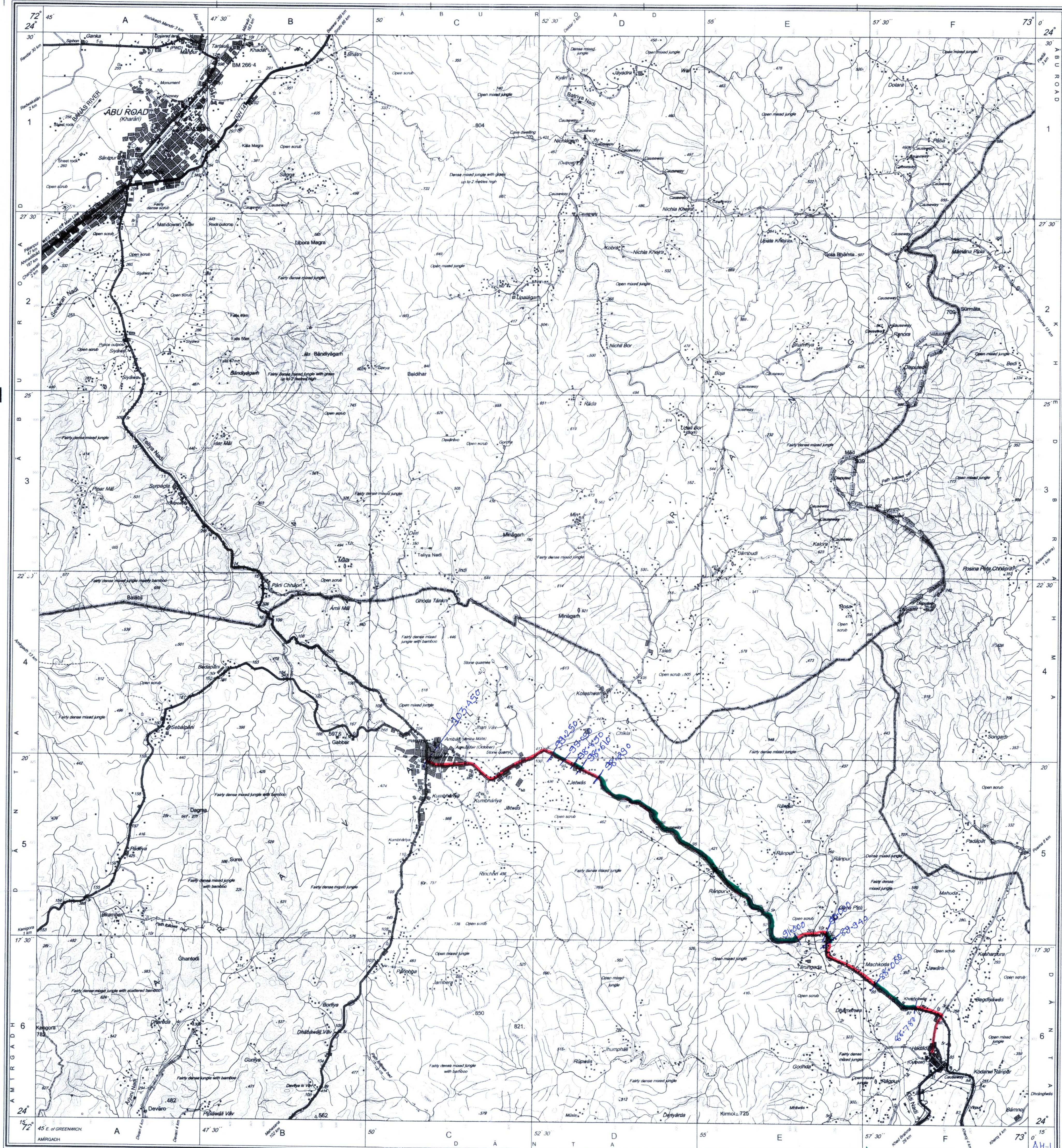
For further details about this map, please contact

Director
Gujarat, Damam & Diu Geo-Spatial Data Centre
Survey of India, Sector-10 (A)
Gandhinagar.

WEBSITE - www.surveyofindia.gov.in

Reproduction in whole or part by any means is prohibited
without the written permission of Survey of India, the
National Mapping Agency.

GOVERNMENT OF INDIA COPYRIGHT, 2011.



REG. No. - SPG D11 (GDDC 1:50,000)

भारत के सर्वेक्षण, सर्वे सुभा राव, बी.ई. के विभाग में प्रकाशित
Published under the direction of Swarna Subba Rao, B.E., Surveyor General of India,
Survey of India, Vaidhikar Estate, Post Box No. 37, Dehra Dun-248001 (Uttarakhand)
Department of Science & Technology, Government of India.

Proposed OFC Route
Sanctuaries forest

