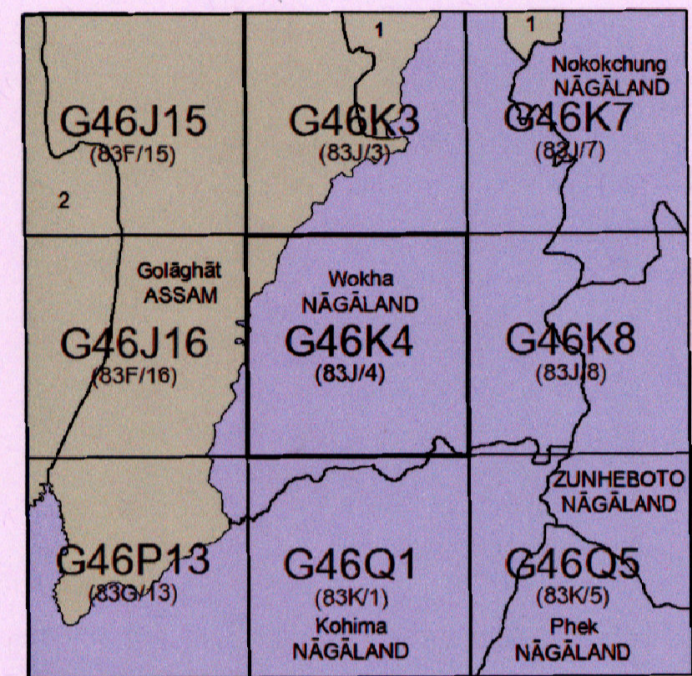


TOPOSHEET MAP SHOWING THE PROPOSED 2.75 HECTARE (2.56 Ha PLINTH AREA & 0.19 Ha APPROACH ROAD) DIVERSION AREA FOR DPDU CLUSTER OF KASOMARIGAON ADDL PML (DRILLING LOCATIONS DPDU, DPDV, DPDW, DPDX, DPDY and DPDZ) AT DOYANG RF UNDER GOLAGHAT DIVISION, GOLAGHAT

Scale - 1: 50000



सर्वेक्षण विभाग SURVEY OF INDIA
1st Edition 2011. Price : Rs. 77/-

CONVENTIONAL SYMBOLS	
Express highway with toll, with bridge, with distance stone	[Symbol]
Roads, metalled according to importance	[Symbol]
Roads, double cartage-way, according to importance	[Symbol]
Unmetalled road, Cart track, Puck-track with pass, Foot path	[Symbol]
Swamp, with track in bed, underflow, Canal	[Symbol]
Dam, masonry or rock-filled, overflow, Weir	[Symbol]
Pier, or with water channel, with sluice & lock, Tidal weir	[Symbol]
Submerged outlet, Shoal, Swamp, Roads	[Symbol]
Water, trout, unfilled, Tube-well, Spring, Tank, perennial dry	[Symbol]
Embankment, road or rail, bank, broken ground	[Symbol]
Railways, broad gauge, double, single with station, under construction	[Symbol]
Railways, other gauges, double, single with distance stone, etc.	[Symbol]
Metalled line or boundary, Gila, Cutting with tunnel	[Symbol]
Contours with scale, Rocky slopes, Cliffs	[Symbol]
Sand dunes (1/40) (2/40) (3/40) (4/40) (5/40) (6/40) (7/40) (8/40) (9/40) (10/40)	[Symbol]
Towns or Villages, inhabited, deserted, Fort	[Symbol]
Hut, permanent, temporary, Tower, Antiquities	[Symbol]
Temple, Chhatra, Church, Mosque, Light, Tomb, Shrine	[Symbol]
Lighthouse, Lightship, Light, lighted, lightless, Anchorage	[Symbol]
Miner, Mine on hill, Open, Sink	[Symbol]
Pulse, paddy, other, Pharus, Conifer, Bamboo, Other trees	[Symbol]
Arable, cultivated, wooded, Surveyed line	[Symbol]
Boundary, international	[Symbol]
State, demarcated, undemarcated	[Symbol]
State, undemarcated, half or three, Bank	[Symbol]
Boundary, surveyed, uncoloured	[Symbol]
Height, triangulated station, spot, approximate	[Symbol]
Barometrical, geodetic, barometrical	[Symbol]
Post office, Telegraph office, Overhead tank	[Symbol]
Rest house or inspection bungalow, Circular house, Police station	[Symbol]
Camping ground, Forest, reserved, forest, forest, forest	[Symbol]
Forest, reserved, forest, forest, forest, forest	[Symbol]
Hospital, Dispensary, Veterinary Hospital, Dispensary	[Symbol]
Aerodrome, Helipad, Tourist site	[Symbol]
Power line, with poles surveyed, with poles unsurveyed	[Symbol]

NOTES :-
Heights and contours have not been shown.
A solid line, e.g., B, represents the approximate height, in metres, between the top and bottom of a steep slope.
The sub-district boundary between Assam and Nagaland States shown in this map is as indicated from the North Eastern Area (Demarcation) Act, 1974 and has yet to be verified.
The District boundary between Karbi and Wokha districts of Nagaland State shown in this sheet is as indicated from the Nagaland Government Notification No. 489/1977, dated 19.12.77 but has yet to be verified on the ground as well as by the district authorities.
Sub-district boundary of Karbi sub-division in Wokha district has been shown in the sheet side verified map but not yet authenticated by the concerned authority.
State or temporarily collected areas occur throughout the map, they are normally abandoned after 2-3 years and are not shown.

COMPILED INDEX
A. Surveyed during 1974-75. Updated for major details during 2005/06.

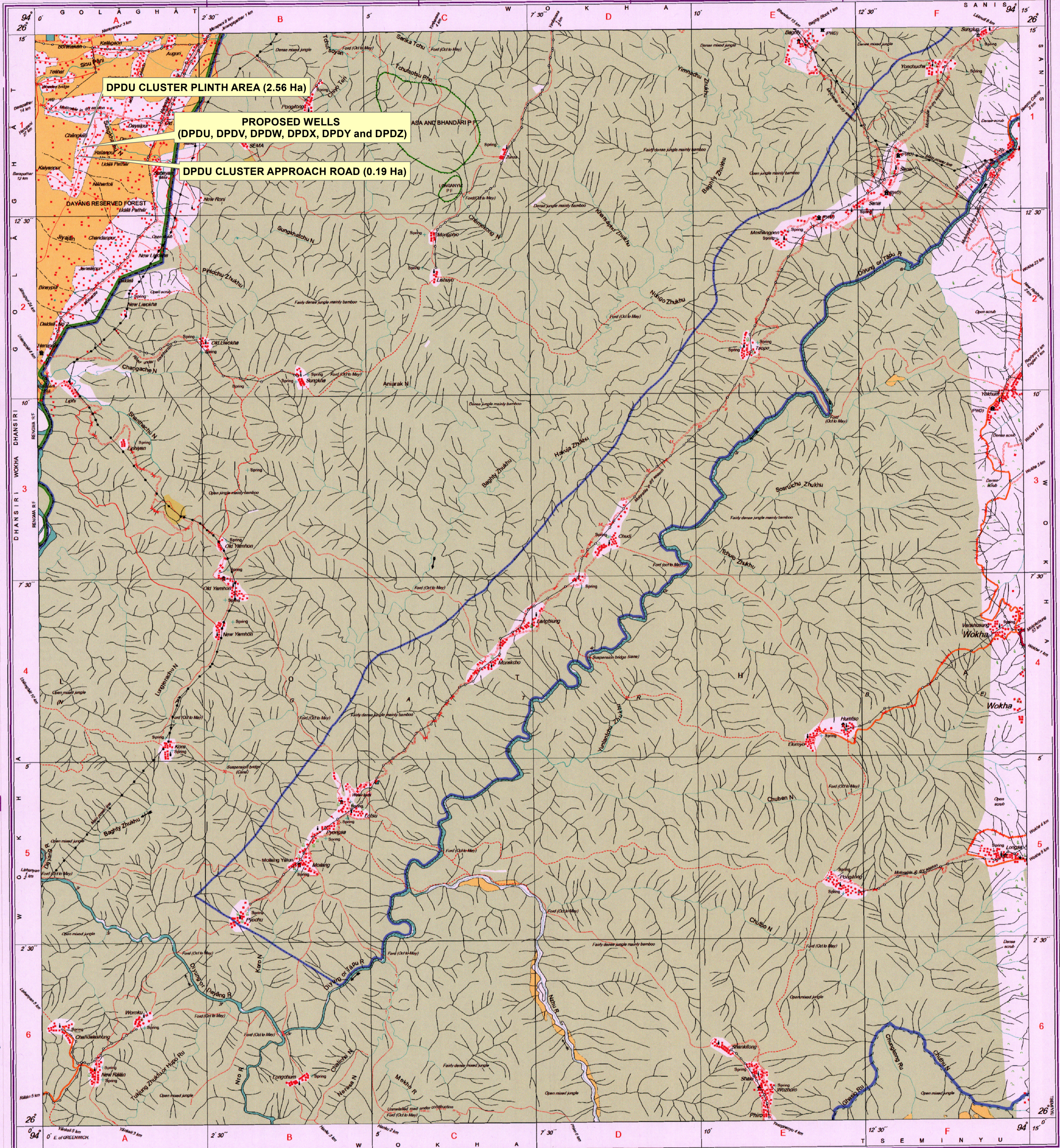
Projection - UTM Datum - WGS 84
Magnetic Variation from True North about West in 2005.
(Increasing by about 1° annually)
1:50,000
0 500 1000 2000 3000 Metres
0 1 2 3 Kilometres

For further details about this map, please contact
Director
Assam & Nagaland Geo-Spatial Data Centre
Survey of India, Ganevagar, Chiridi, Dispur
Guwahati.

WEBSITE - www.surveyofindia.gov.in

Reproduction in whole or part by any means is prohibited without the written permission of Survey of India, the National Mapping Agency.

GOVERNMENT OF INDIA COPYRIGHT, 2011.



TOTAL STATION COORDINATE READINGS OF WELL LOCATIONS						
TOTAL STATION POINT	LATITUDE	LONGITUDE	IDENTITY	NAME OF DRILLING SITE	NAME OF RF	NAME OF FOREST DIVISION
DPDU	26° 13' 27.200" N	94° 0' 42.470" E	Proposed Well			
DPDV	26° 13' 27.200" N	94° 0' 42.810" E	Proposed Well			
DPDW	26° 13' 27.020" N	94° 0' 42.470" E	Proposed Well	DPDU CLUSTER	DOYANG RF	GOLAGHAT DIVISION
DPDX	26° 13' 27.020" N	94° 0' 42.810" E	Proposed Well			
DPDY	26° 13' 26.840" N	94° 0' 42.470" E	Proposed Well			
DPDZ	26° 13' 26.840" N	94° 0' 42.790" E	Proposed Well			

TOTAL STATION COORDINATE READINGS OF PROPOSED PLINTH AREA							
TOTAL STATION POINT	LATITUDE	LONGITUDE	NAME OF COMPONENT	AREA (Ha)	NAME OF DRILLING SITE	NAME OF RF	NAME OF FOREST DIVISION
A	26° 13' 25.541" N	94° 0' 38.762" E	PLINTH AREA	2.56	DPDU CLUSTER	DOYANG RF	GOLAGHAT DIVISION
B	26° 13' 23.829" N	94° 0' 44.213" E					
C	26° 13' 28.741" N	94° 0' 46.136" E					
D	26° 13' 30.436" N	94° 0' 40.679" E					

Projection - UTM Zone 46 N
Datum - WGS 84
Toposheet Courtesy - Survey Of India

- Legend
- Plinth Area Coordinates
 - Approach Road Coordinates
 - Proposed Well
 - Approach Road Polygon
 - Plinth Area Polygon

TOTAL STATION COORDINATE READINGS OF PROPOSED APPROACH ROAD							
TOTAL STATION POINT	LATITUDE	LONGITUDE	NAME OF COMPONENT	AREA (Ha)	NAME OF DRILLING SITE	NAME OF RF	NAME OF FOREST DIVISION
R-1	26° 13' 24.771" N	94° 0' 41.213" E	APPROACH ROAD	0.19	DPDU CLUSTER	DOYANG RF	GOLAGHAT DIVISION
R-1A	26° 13' 22.324" N	94° 0' 40.171" E					
R-1B	26° 13' 18.470" N	94° 0' 36.770" E					
R-1C	26° 13' 17.830" N	94° 0' 36.380" E					
R-2	26° 13' 24.686" N	94° 0' 41.486" E					
R-2A	26° 13' 22.231" N	94° 0' 40.440" E					
R-2B	26° 13' 18.310" N	94° 0' 36.990" E					

Niva Moni Tamuli
GM (P) Head HSE
ONGC, JORHAT ASSET, ASSAM