

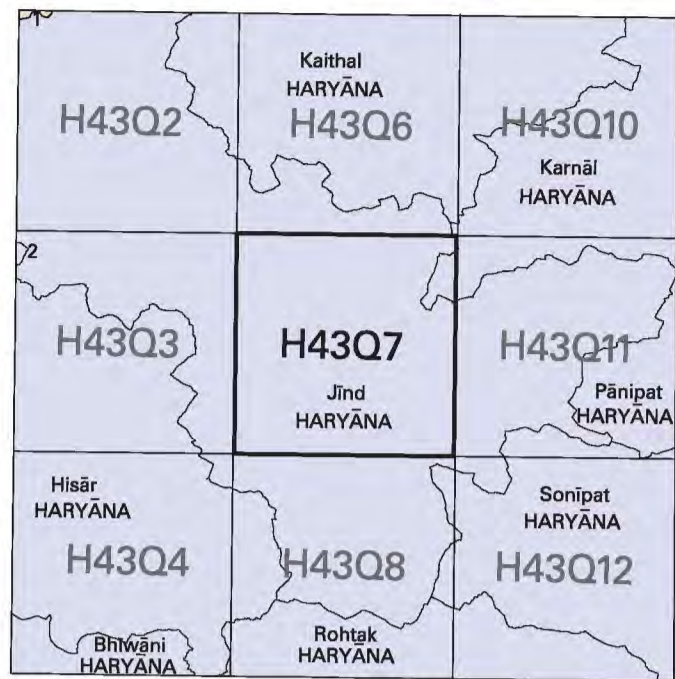


NOT FOR EXPORT

OPEN SERIES MAP

No. H43Q7

Scale 1:50,000



भारतीय सर्वेक्षण विभाग SURVEY OF INDIA

1st Edition 2007.

Price : Rs. 50/-

CONVENTIONAL SYMBOLS

- Express highway with toll; with bridge with distance stone...
Roads, metalled according to importance...
Streams with track in bed; undefined Canal...
Towns or Villages: inhabited; deserted; Fort...
Contours with sub-features. Rocky slopes. Cliffs...
Aerodrome. Helipad. Tourist site...

REFERENCES

NH 71 National Highway No. 71 Dep Depression

NOTES

Heights are in metres and above Indian mean sea level.
Contours are approximate.
A relative height, e.g. 30, represents the approximate height in metres between the top and bottom of a steep slope.

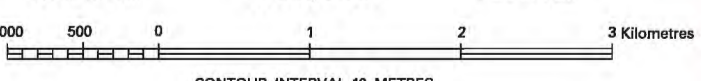
COMPILED INDEX

A. Surveyed during 1988-89. Updated for major details during 2005-06.

Projection - UTM Datum - WGS 84

Magnetic Variation from True North about 3/4 East in 2000.

1:50,000



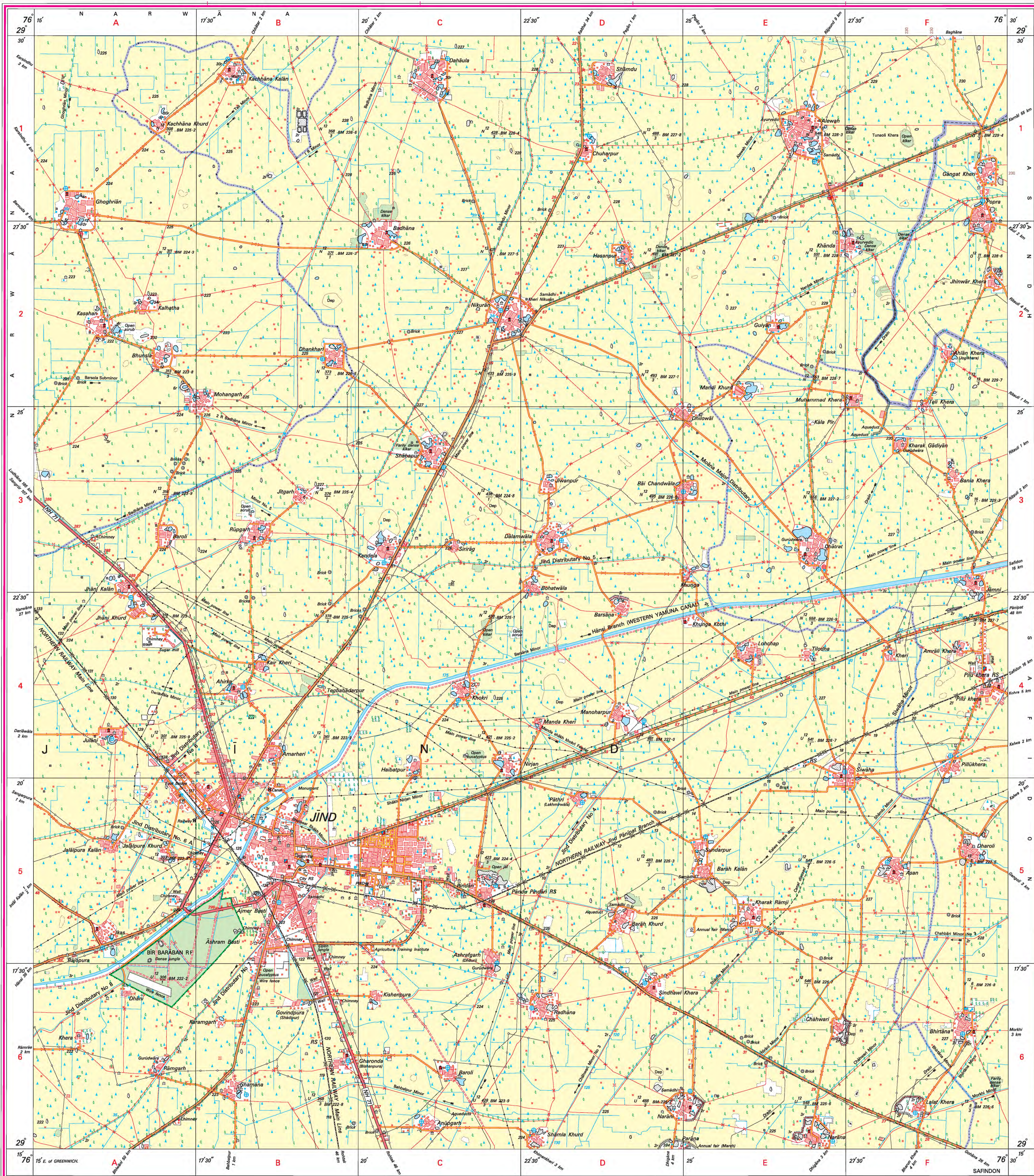
For further details about this map, please contact

Director
Haryana Geo-Spatial Data Centre
Survey of India, Sector 32 A
Chandigarh.

WEBSITE - www.surveyofindia.gov.in

Reproduction in whole or part by any means is prohibited
without the written permission of Survey of India, the
National Mapping Agency.

GOVERNMENT OF INDIA COPYRIGHT, 2007.



REG. No. -WPG D 57 (Haryana GDC-150,000)

भारत के नक्शाकार: जेएन जसल एण्ड जेएल एल, बीएचए, सी.बी.डी (पब्लिशिंग), पणजी, महाराष्ट्र, भारत.
Published under the direction of Major General M. Gopal Rao, B.Tech., P.G.Dip. (Aerial Photo), MIME, MCA, FIS, Surveyor General of India,
Survey of India, HathiBarkala Estate, Post Box No. 37, Dehra Dun - 248001 (Uttarakhand)
Department of Science & Technology, Government of India.

PRINTED AT THE WESTERN PRINTING GROUP OF SURVEY OF INDIA.