

Details Scheme of Compensatory Afforestation for Diversion of 10.7445 Ha Protected forest land for strengthening and widening of Nasyadi-Bhakha-Kavat Road Km.0/00 to 38/400 km in Favour of Executive Engineer, R & B Division, Chhotaudepur Taluka in SF Division Vadodara in Vadodara in Gujarat State.

INDIA
REFER TO THIS MAP AS :- 1:50,000
SHEET 46 F/11 FIRST EDITION

PANCH MAHALS AND
VADODARA DISTRICTS.

RESTRICTED

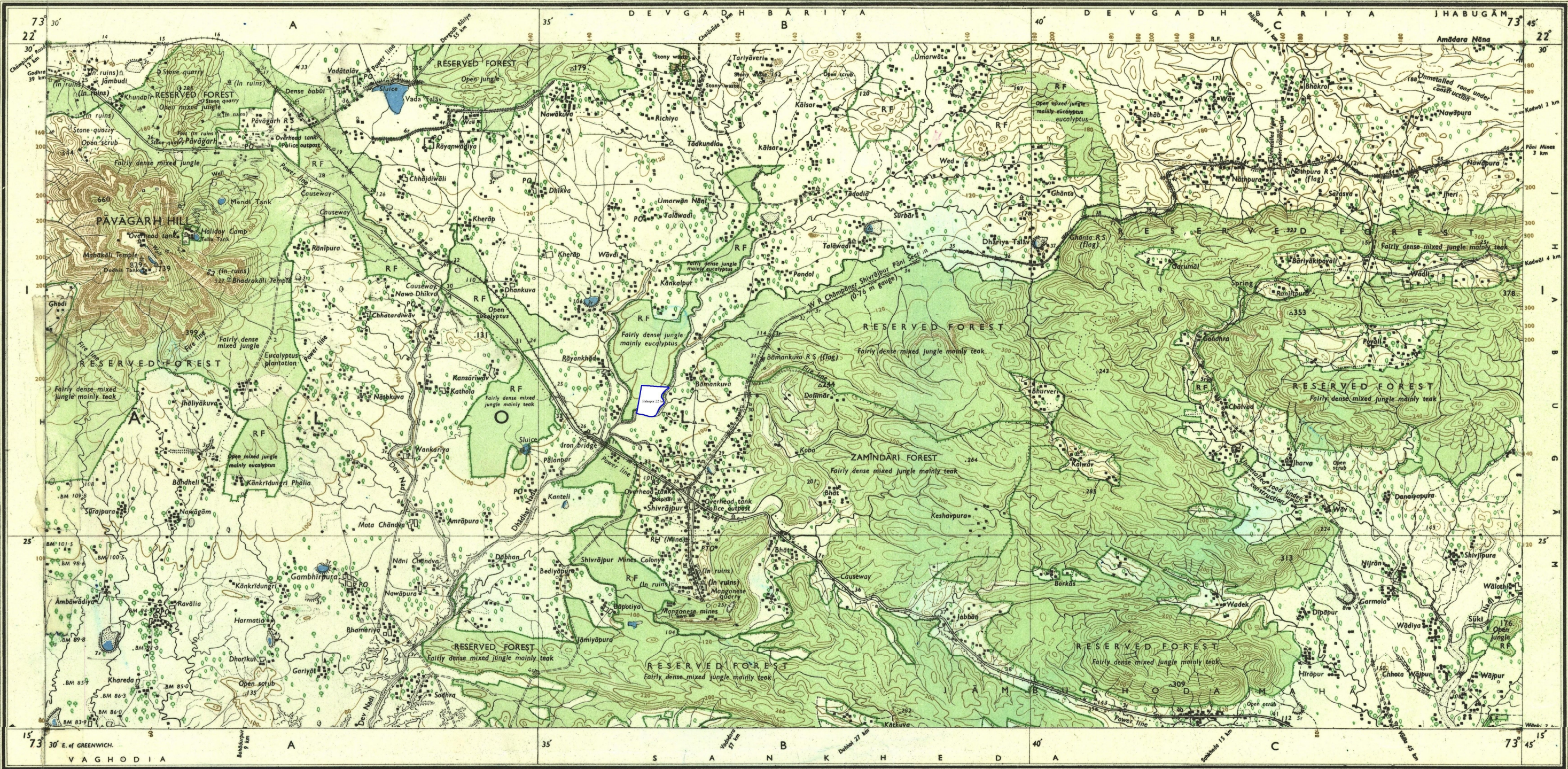
Surveyed 1968-69.

GUJARAT

FIRST EDITION

Magnetic Variation from True North about 1° West in 1970.
(Annual change negligible).

No. 46 F



Reg. No. 2542 HD/70 (W. C. 31-133.333)-712 77-2506 81-4506 86.

Roads metalled: according to importance: distance stone	20
unmetalled: do.	do.
Cart-track: Pack-track and pass. Foot-path with bridge	do.
Bridges: with pier: without. Causeway. Ford or Ferry	do.
Streams: with track in bed: undefined. Canal	do.
Dams: masonry or rock-filled earthwork. Weir	do.
River bank: shelving: steep: 3 to 6 metres: over 6 metres	do.
dry with water channel: with island & rocks. Tidal river	do.
Submerged rocks. Shoal. Swamp. Reeds	do.
Wells: lined: unlined. Tube-well. Spring. Tanks: perennial: dry	do.
Embankment: road or rail tank. Broken ground	do.
Railways: broad gauge: double: single with station: under constr.	do.
other gauges: do. do. with distance stone: do.	do.
Mineral line or tramway. Telegraph line. Cutting with tunnel	do.
Contours with sub-features. Rocky slopes. Cliffs	do.
Sand features: shifting. Sand-hills and dunes. Surrounded by shifting dunes	do.

Index to Sheets

46 E 6	46 F 10	46 E 14
46 E 7	46 F 11	46 E 15
46 E 8	46 F 12	46 E 16

Published under the direction of Brigadier J. A. F. Dalal, B.A. (Hons.), p.s.c. M.I.S., M.I.E., Officiating Surveyor General of India, 1970.

500 m to 1 cm
1:50,000
Metres 1000 500 0 1 2 3 4 5 6 7 Kilometres
2 cm to 1 km

HEIGHTS & CONTOURS IN METRES
CONTOUR INTERVAL 20 METRES

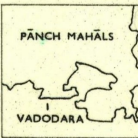
*Water features are shown in blue where they generally contain water.
*Cultivated areas are coloured yellow.
The exterior boundaries of areas of Reserved or Protected Forests are shown by green ribands.

Contours are approximate.
A relative height, 'dr', represents the approximate height, in metres, between the top and bottom of a steep slope.
Wooded areas are coloured green. Scattered trees and other vegetation are in green, but prominent surveyed trees are in black.

*Not applicable.

The triangulated heights and contours in this sheet have not been adjusted to the heights of the spirit-levelled bench-marks and may not be strictly in accordance with them.
Cart-tracks and unmetalled roads in this sheet against which there is no descriptive remark are generally jeepable in dry season.
The kilometre stone numbers along roads and railways are shown in slant type, e.g., 'S' whereas milestone numbers are shown in upright type, e.g., '5'.
Tanks, shown dry, in this area usually contain water from July to February.
Periodical cultivation occurs in the non-perennial portion of Orsang River bed during summer.
Cactus hedges generally exist along cart-tracks and field bunds.

Administrative Index



Towns or Villages: inhabited: deserted. Fort	do.
Huts: permanent: temporary. Tower. Antiquities	do.
Temple. Chhatra. Church. Mosque. Idgh. Tomb. Graves	do.
Lighthouse. Lightship. Buys: lighted: unlighted. Anchorage	do.
Mine. Vine on trellis. Grass. Scrub	do.
Palm: palm: other. Plantain. Conifer. Bamboo. Other trees	do.
Boundary: international	do.
state: demarcated: undemarcated	do.
district: subdivided: taluk: forest	do.
Boundary pillars: surveyed: unlocated: village junction	do.
Heights: triangulated: station: point: approximate	do.
Bench-mark: geodetic: tertiary: canal	do.
Post office. Telegraph office. Combined office. Police station. PD TO PTO PS	do.
Bungalows: dsk or travellers: inspection. Rest-house	do.
Circuit house. Camping ground. Forest: reserved: protected	do.
Spaced names: administrative: locality or tribal	do.

GOVERNMENT OF INDIA COPYRIGHT, 1970.
Price: Five Rupees.

RESTRICTED

This map is NOT to be published, copied or reproduced in part or in whole either by photography or by any other means: should be kept in safe custody and handled by authorized persons only.

REFER TO THIS MAP AS :- 1:50,000
SHEET 46 F/11 FIRST EDITION

INDIA

Referance

Compensatory Afforestation Area
Palanpur (22 Ha)

