

No. F44F7

Scale 1:50,000

F44F2 (64M/2)	F44F6 (64M/6)	F44F10 (64M/10)
F44F3 (64M/3)	F44F7 (64M/7) Surguja CHHATTISGARH	F44F11 (64M/11)
F44F4 (64M/4)	F44F8 (64M/8)	F44F12 (64M/12) Jashpur CHHATTISGARH

1 Garhwa, JHARKHAND.

भारतीय सर्वेक्षण विभाग SURVEY OF INDIA

1st Edition 2010.

Price : Rs. 70/-

CONVENTIONAL SYMBOLS

- Express highway; with toll; with bridge; with distance stone.
- Roads, metalled; according to importance.
- Roads, double carriageway; according to importance.
- Unmetalled road. Cart-track. Pack-track with pass. Foot-path.
- Streams; with track in bed; undefined. Canal.
- Dams; masonry or rock-filled; earthwork. Well.
- River; dry with water channel; with island & rocks. Tidal river.
- Submerged rocks. Shoal. Swamp. Reeds.
- Wells; lined; unlined. Tube-well. Spring. Tanks; perennial; dry.
- Embankments; road or rail; tank. Broken ground.
- Railways, broad gauge; double; single with station; under constr.
- Railways, other gauges; double; single with distance stone; do.
- Mineral line or tramway. Kin. Cutting with tunnel.
- Contours with sub-features. Rocky slopes. Cliffs.
- Sand features; (1) flat. (2) sand-hills (permanent). (3) dunes (shifting).
- Towns or Villages; inhabited; deserted. Fort.
- Huts; permanent; temporary. Tower. Antiquities.
- Temple. Chhatri. Church. Mosque. Dargah. Tomb. Graves.
- Lighthouse. Lightship. Buoys; lighted; unlighted. Anchorage.
- Mine. Vine on trellis. Grass. Scrub.
- Palms; palms; other. Plantain. Conifer. Bamboo. Other trees.
- Areas; cultivated; wooded. Surveyed tree.
- Boundary, international.
- state; demarcated; undemarcated.
- district; subdivision; tahsil or taluk; forest.
- Boundary pillars; surveyed; unlocated.
- Heights, triangulated; station; point; approximate.
- Bench-mark; geodetic; tertiary; canal.
- Post office. Telegraph office. Overhead tank.
- Rest house or inspection bungalow. Circuit house. Police station.
- Camping ground. Forest; reserved; protected.
- Spaced names; administrative; locality or tribal.
- Hospital. Dispensary. Veterinary. Hospital / Dispensary.
- Aerodrome. Helipad. Tourist site.
- Power line; with pylons surveyed; with poles unsurveyed.

REFERENCE

PWD Public Works Department.

NOTES :-

Heights are in metres and above Indian mean sea level.

Contours are approximate.

A relative height, e.g., 50, represents the approximate height, in metres, between the top and bottom of a steep slope.

Tanks shown dry, in this area usually contain water from July to December.

Unmetalled roads and cart-tracks in this sheet are generally motorable in dry season.

The triangulated heights and contours in this sheet have not been adjusted to the heights of the spirit-levelled bench-marks and may not be strictly in accordance with them.

The exterior boundaries of areas of Reserved or Protected Forests are shown with green ribands.

COMPILATION INDEX

A. Surveyed during 1969-70. Updated for major details during 2005-06.

Projection - UTM Datum - WGS 84

Magnetic Variation from True North about $\frac{1}{2}^{\circ}$ West in 2005.
(Decreasing by about 1° annually).

1:50,000

Metres 1000 500 0 1 2 3 Kilometres

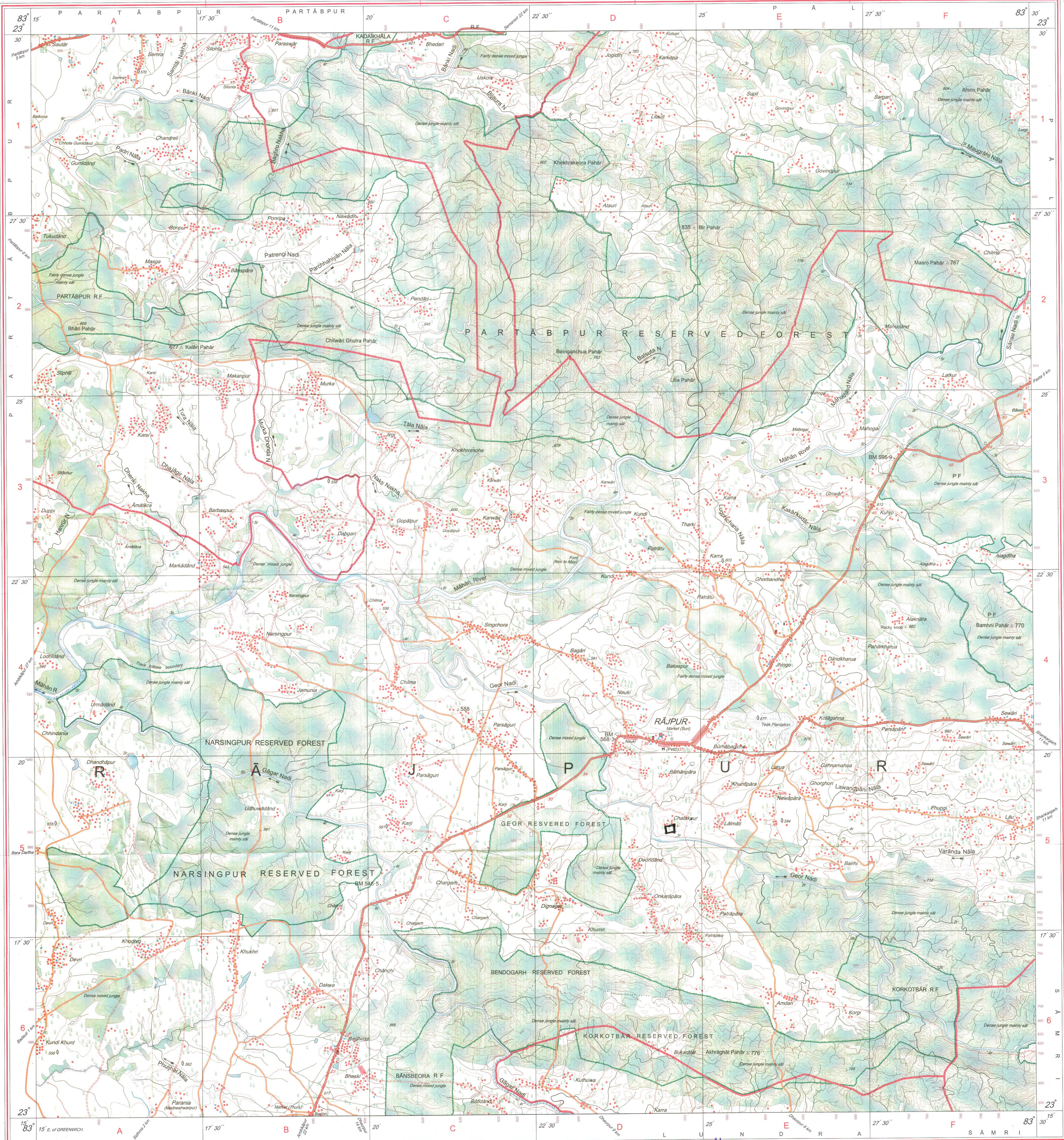
CONTOUR INTERVAL 20 METRES

For further details about this map, please contact
Director
Chhattisgarh Geo-Spatial Data Centre
Survey of India, Pachpedi Naka
Raipur.

WEBSITE - www.surveyofindia.gov.in

Reproduction in whole or part by any means is prohibited
without the written permission of Survey of India, the
National Mapping Agency.

GOVERNMENT OF INDIA COPYRIGHT, 2010.



REG. No. 9582-SPG D/11 (Chhattisgarh GDC-1:50,000)-1015.

भारत के महामापक, सर्वेक्षण विभाग, रायपुर, भारत, के निदेशन में प्रकाशित,
Published under the direction of Swarna Subba Rao, B.E., Surveyor General of India,
Survey of India, Hattibarkala Estate, Post Box No. 37, Dehra Dun-248001 (Uttarakhand)
Department of Science & Technology, Government of India.

Executive Engineer (Civil-Trans)
Division, C.S.T.C.L. Raipur

PRINTED AT THE SOUTHERN PRINTING GROUP OF SURVEY OF INDIA.

सर्वेक्षण विभाग
रायपुर, चhattisgarh