

1 Rājkot, GUJARĀT.

## 1st Edition 2011.

### CONVENTIONAL SYMBOLS

- [illegible]

NOTES :-

A relative height, e.g., 50%, represents the approximate height, in metres, between the top and bottom of a steep slope.

## COMPIRATION INDEX

A. Censited from 1,25,000. Surveyed during 1986-87. Updated for major details during 2003-04.

Magnetic Variation from True North about  $1^{\circ}$  West in 2005

500 m to 1 cm

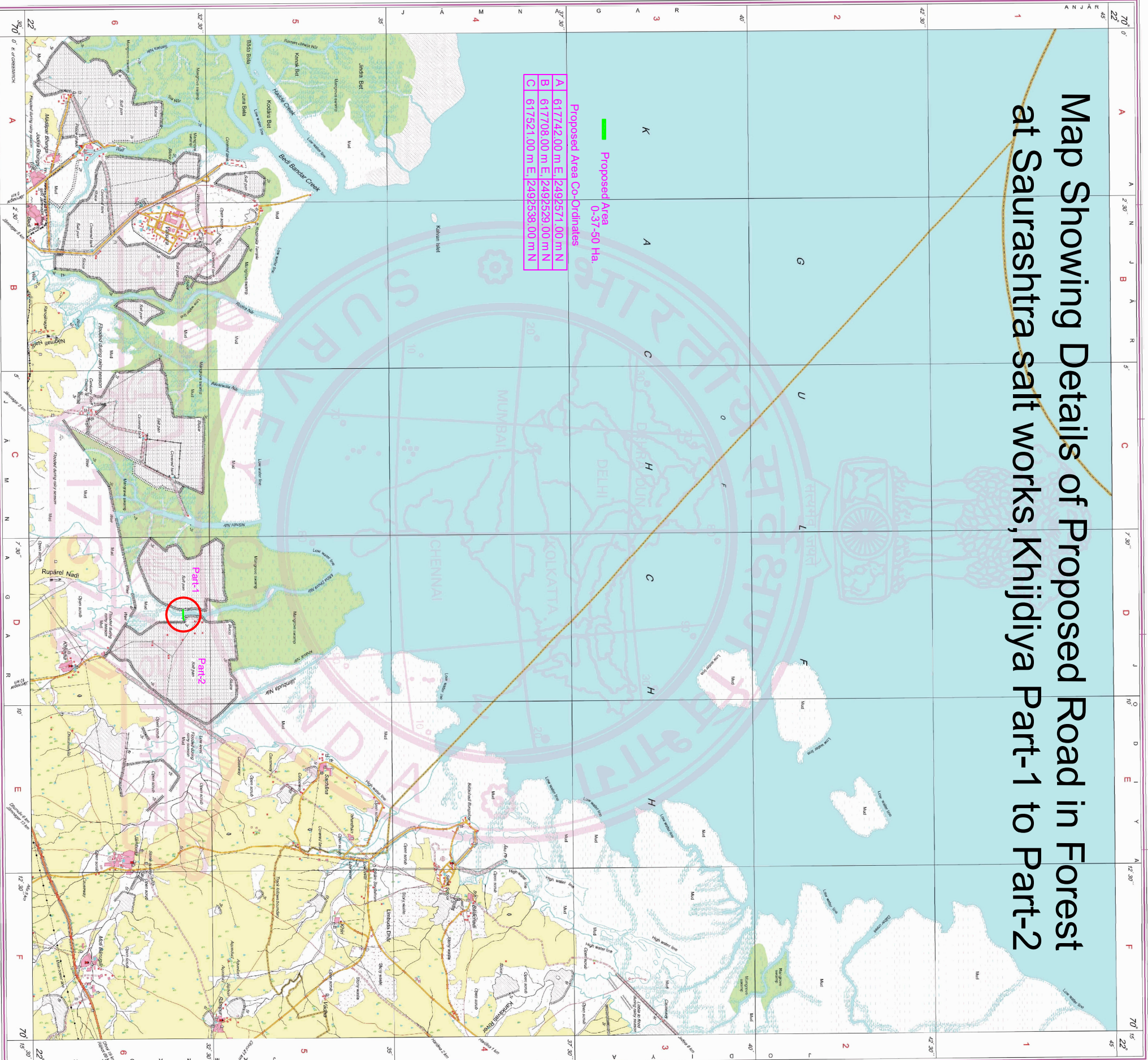
1:50,000

2 cm to 1 km

For further details about this map, please contact:  
**Director**  
 Gujarat, Daman & Diu Geo-Spatial Data  
 Survey of India, Sector-10 (A)  
 Gandhinagar.

WEBSITE : [www.surveyofindia.gov.in](http://www.surveyofindia.gov.in)

# Map Showing Details of Proposed Road in Forest at Saurashtra salt works, Khijdiya Part-1 to Part-2



PRINTED AT THE SOUTHERN PRINTING GROUP OF SURVEY OF INDIANA

भारत के जलसंशोधक, राष्ट्रीय मुद्रा तार, 2010, के निर्देश से प्रकाशित.  
Published under the direction of Swarna Subba Rao, B.E., Surveyor General of India,  
Survey of India, Hitharhaka Estate, Post Box No.37, Dehra Dun-248001 (Uttarakhand).  
Department of Science & Technology, Government of India.