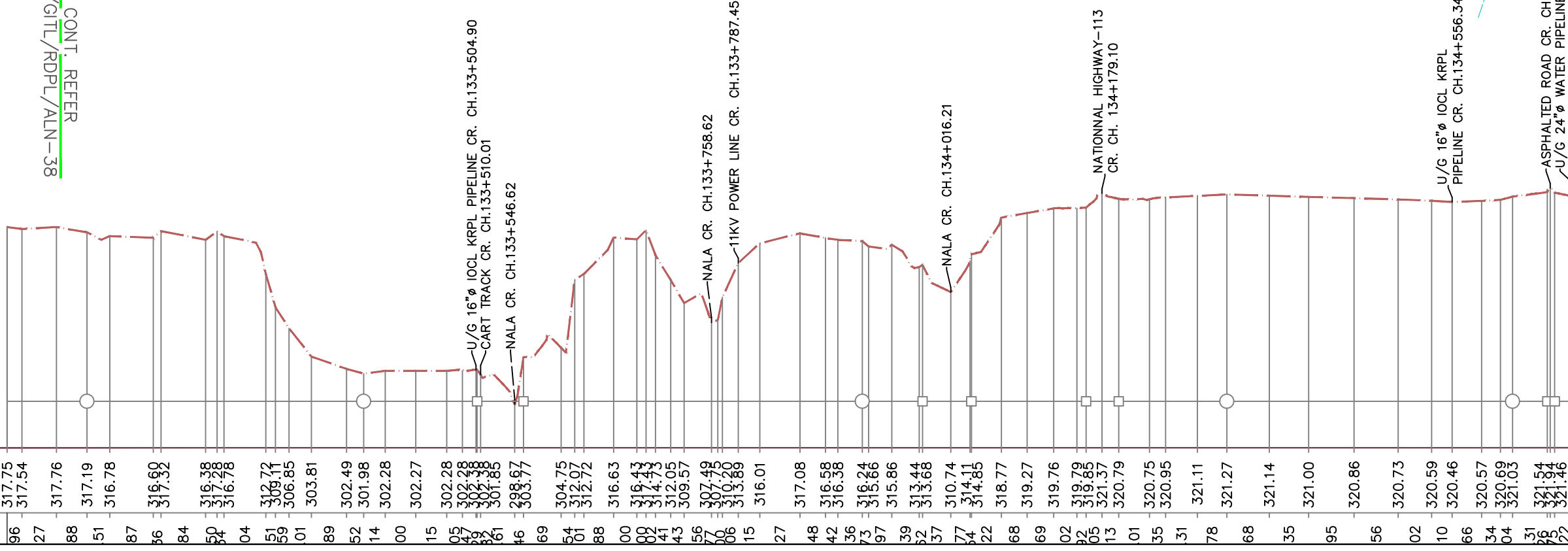
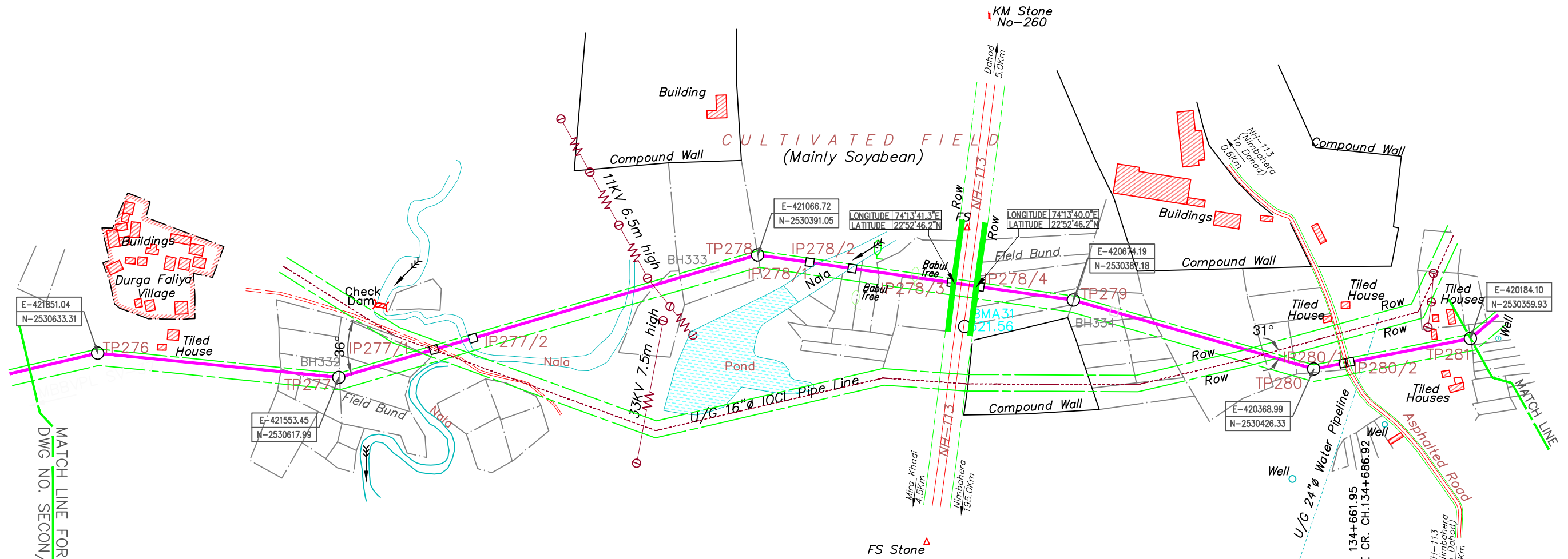


TP276	TP277	IP277/1 IP277/2	TP278	IP278/2 IP278/1	IP278/4 IP278/3	TP279	IP280/1 TP280	IP280/2	TP281	TP282	TP283				
18°54'08" R	22°02'57" L		24°25'54" R			07°52'31" R	27°03'49" L		29°23'28" L	25°08'56" L	19°03'01" L				
86.11	297.98	122.10	49.89	365.05	64.71	52.68	123.53	35.18	116.45	307.70	37.31	151.14	97.00	92.02	1

**GUJARAT STATE , DAHOD DISTRICT AND DAHOD TALUK.**



- GITL GAS PIPELINE
- NATIONAL HIGHWAY-113
- PROTECTED FOREST

<b>CLIENT</b>	<b>GSPL INDIA TRANSCO LIMITED</b> GSPC BHAVAN, GANDHINAGAR, GUJARAT
<b>PROJECT</b>	RATLAM-DAHOD CONNECTIVITY
<b>TITLE</b>	ALIGNMENT SHEET (PIPELINE) SECTION : MBBVPL SV-37 TO DAHOD CHAINAGE : FROM 133/000.00 KM TO 135/883.11 KM
<b>SURVEY CONSULTANTS</b>	<b>SECON PRIVATE LIMITED</b> BANGALORE - 66
<b>SCALE</b>	AS SHOWN
<b>JOB NO.</b>	-
<b>DRAWING NO.</b>	SECON/GITL/RDPL/ALN-39
<b>REV.</b>	0

MATCH LINE FOR CONT. REFER DWG. NO. SECON/GITL/RDPL/ALN-38