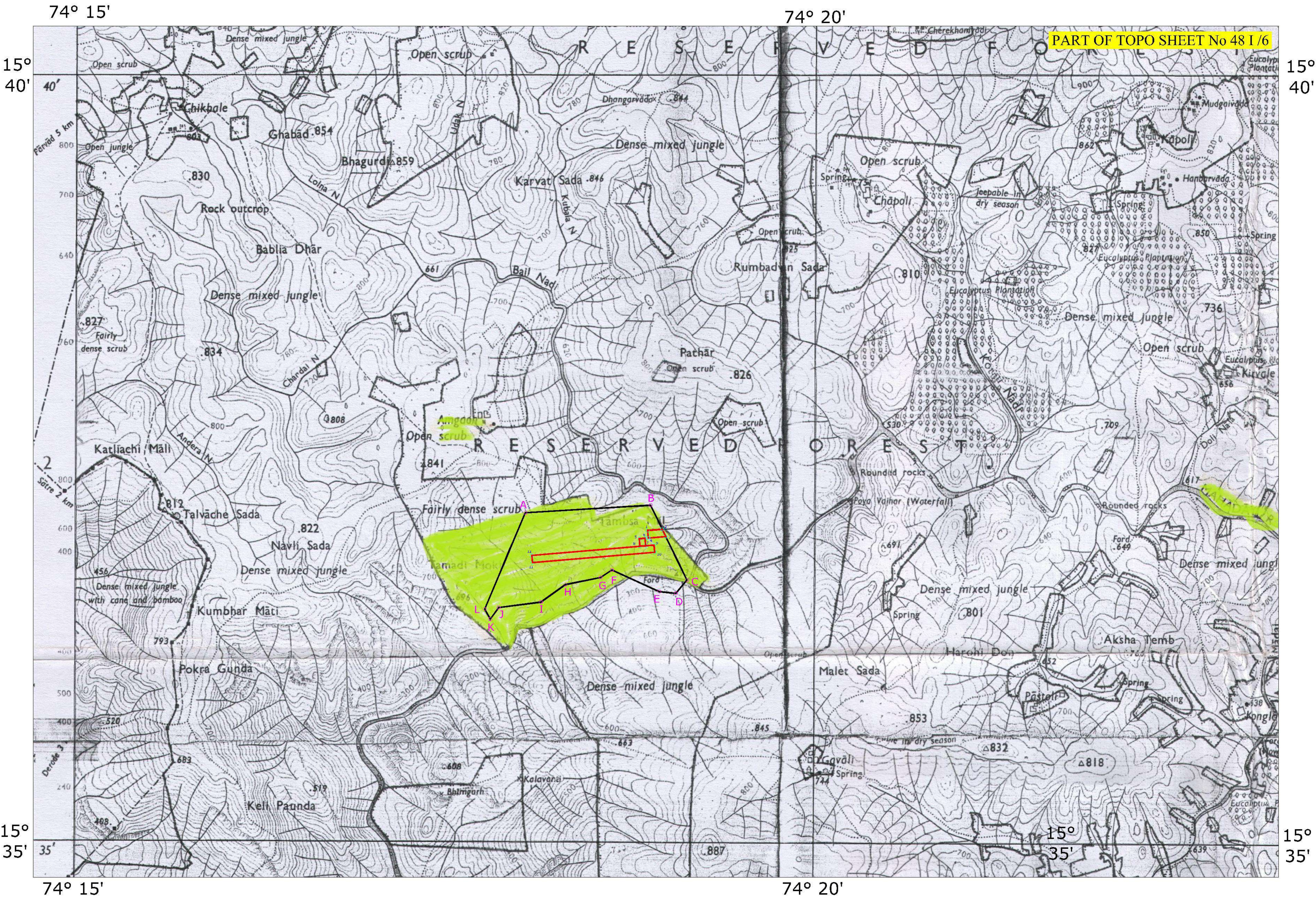
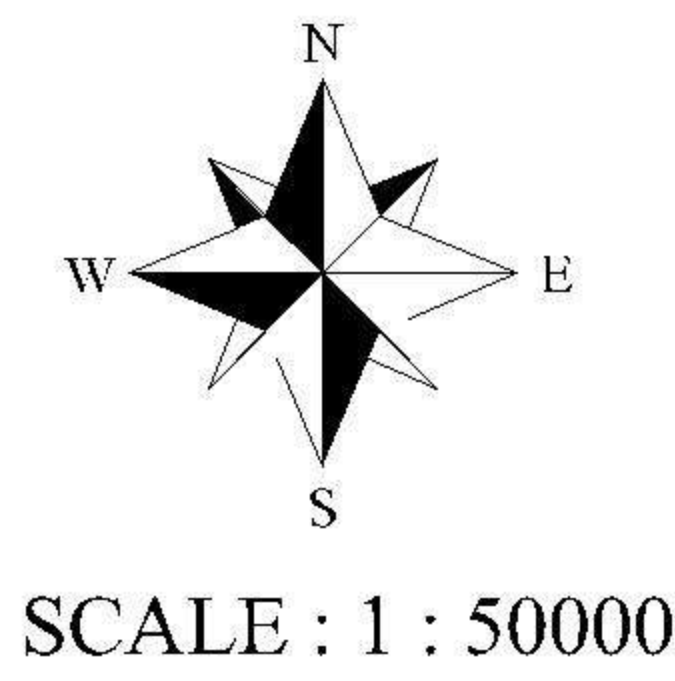


TOPO PLAN SHOWING THE NON FOREST CA LAND AREA AN EXTENT OF 15.300 Ha (32.49 Ha - 17.195Ha) IN RESPECT OF RAMDEV IRON ORE MINE OF M/s.MSPL LIMITED ML.No.2563, ML AREA - 30.09 Ha + APPROACH ROAD - 2.40 Ha = 32.49 Ha, RAMGAD RESERVED FOREST , SANDUR TALUK, BALLARI DIST, KARNATAKA LOCATED AT SY.No. 6/4, 6/5 & SY.No.6/6 OF AMAGAON VILLAGE, KHANAPUR TALUK , BELAGAVI DISTRICT



CA LAND DETAILS
SY.NO: 6/4 , 6/5 & 6/6
C A LAND AREA : 37.80 Ac (15.30 Ha)
VILLAGE: AMAGAON
TALUK : KHANAPURA
DISTRICT : BELAGAVI
STATE : KARNATAKA

AREA DETAILS		
Sy.No	Area (Ac)	Area (Ha)
6/4	4.34	1.75
6/5	1.60	0.65
6/6	31.88	12.90
Total	37.82	15.30

GPS READINGS OF SY.No.6		
Grid: Lat/Lon hddd°		
Name	LATITUDE	LONGITUDE
A	N15.62296	E74.30056
B	N15.62383	E74.31470
C	N15.61564	E74.31883
D	N15.61420	E74.31759
E	N15.61437	E74.31572
F	N15.61672	E74.31035
G	N15.61591	E74.30908
H	N15.61510	E74.30509
I	N15.61319	E74.30235
J	N15.61258	E74.29759
K	N15.61131	E74.29665
L	N15.61240	E74.29602
Datum: WGS 84		

INDEX

- SY.No.6 OF AMAGAON VILLAGE, KHANAPURA TALUK AND BELAGAVI DISTRICT
- THE NON FOREST ADDITIONAL CA LAND AREA AN EXTENT OF 15.300 Ha (32.49 Ha - 17.195Ha) IN RESPECT OF RAMDEV IRON ORE MINE OF M/s.MSPL LIMITED ML.No.2563 (FP/KA/MIN/50114/2020)

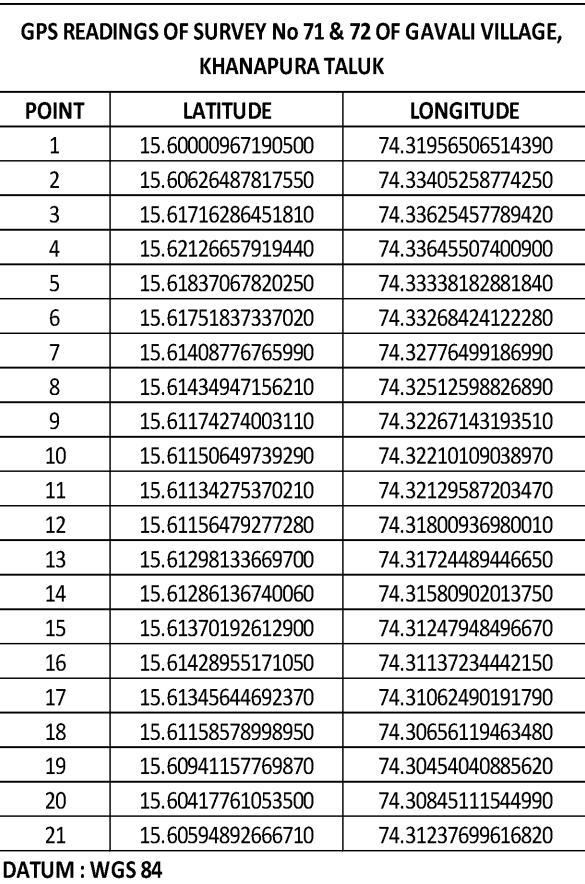
CA LAND AREA AN EXTENT OF 15.30 Ha (1.75+0.65+12.90Ha) IN RESEPECT OF RAMDEV IRON ORE MINE OF M/s. MSPL LIMITED, ML No. 2563 (FP/KA/MIN/50114/2020)

GPS READINGS OF PROPOSED CA LAND AREA		
Lat/Lon hddd.ddddd°		
POINT	LATITUDE	LONGITUDE
1	N15.62106	E74.31438
2	N15.62119	E74.31603
3	N15.62040	E74.31642
4	N15.62023	E74.31445
5	N15.62014	E74.31344
6	N15.62020	E74.31410
7	N15.61938	E74.31417
8	N15.61932	E74.31351
9	N15.61946	E74.31510
10	N15.61868	E74.31516
11	N15.61751	E74.30139
12	N15.61829	E74.30132
DATUM : WGS 84		

for MSPL LIMITED

K.MADHUSUDHANA
VP Mines & CC

SCALE : 1 : 50000



**GPS READINGS OF COMPENSATORY AFFORESTATION
LAND OVER AN EXTENT OF 17.190 Ha IN RESEPT TO
RAMDEV IRON ORE MINE OF M/s MSPL LIMITED
(ERSTWHILE LESSEE OF M/s. KANHAIYALAL DUDHERIA, ML
No 2563)**

POINT	LATITUDE	LONGITUDE
R1	15.61347821211330	74.32840804787260
R2	15.60953654251090	74.33038431090960
R3	15.60817386300310	74.32737033642740
R4	15.61207249312280	74.32541477339910

DATUM : WGS 84

CA LAND AREA DETAILS FOR RAMDEV IRON ORE MINE OF M/s.MSPL LIMITED (ERSTWHILE LESSEE OF M/s KANHAIYALAL DUDHERIA, ML No 2563)		
VILLAGE: GAVALI, HOBLI: GUNJI, TALUK: KHANAPUR & DISTRICT: BELAGAVI		
SURVEY No	Acre - Gunta	Area (Ha)
Part of 72/6	09 - 08.72	3.7304
72/8	24 - 39.13	10.1083
Part of 72/10	08 - 11.25	3.3513
Total	42 A - 19.10 G	17.1900

for MSPL LIMITED

AUTHORISED SIGNATORY

PART OF TOPO SHEET No D43C6