



ANNEXURE - 28

OPEN SERIES  
MAP

No. F42L3

Scale 1:50,000

F42K14 (41J/14)	F42L2 (41N/2)	F42L6 (41N/6)
Rajkot GUJARAT F42K15 (41J/15)	F42L3 (41N/3)	Surendranagar GUJARAT F42L7 (41N/7)
F42K16 (41J/16)	F42L4 (41N/4)	F42L8 (41N/8)

1 Bhavnagar, GUJARAT.

भारतीय सर्वेक्षण विभाग

SURVEY OF INDIA

1st Edition 2011.

Price : Rs. 70/-

#### CONVENTIONAL SYMBOLS

Express highway, with toll; with bridge; with distance stone			
Roads, metalled; according to importance			
Roads, double carriageway; according to importance			
Unmetalled road. Cart-track. Pack-track with pass. Foot-path.			
Streams, with track in bed; undefined. Canal.			
Dams: masonry or rock-filled; earthwork. Weir.			
River: dry with water channel; with island & rocks. Tidal river.			
Submerged rocks. Shoal. Swamp. Reeds.			
Wells: lined; unlined. Tube-well. Spring. Tanks: perennial; dry.			
Embankments: road or rail; tank. Broken ground.			
Railways, broad gauge: double; single with station; under constn.			
Railways, other gauges: double; single with distance stone; do.			
Mineral line or tramway. Kln. Cutting with tunnel.			
Contours with sub-features. Rocky slopes. Cliffs.			
Sand features: (1) flat. (2) sand-hills(permanent). (3) dunes(chilling).			
Towns or Villages: inhabited; deserted. Fort.			
Huts: permanent; temporary. Tower. Antiquities.			
Temple. Chhatra. Church. Mosque. Idgah. Tomb. Graves.			
Lighthouse. Lightship. Buoys: lighted; unlighted. Anchorage.			
Mine. Vine on trellis. Grass. Scrub.			
Palms: palmyra; other. Plantain. Conifer. Bamboo. Other trees.			
Areas: cultivated; wooded. Surveyed tree.			
Boundary, international.			
state: demarcated; undemarcated.			
district: subdivision; tahsil or taluk; forest.			
Boundary pillars: surveyed; unlocated.			
Heights: triangulated; station; point; approximate.			
Bench-mark: geodetic; tertiary; canal.			
Post office. Overhead tank.			
Rest house or inspection bungalow. Court house. Police station.			
Camping ground. Forest: reserved; protected.			
Spaced names: administrative; locality or tribal.			
Hospital. Dispensary. Veterinary: Hospital / Dispensary.			
Aerodrome. Helipad. Tourist site.			
Power line: with pylons surveyed; with poles unsurveyed.			

#### Demanded Forest Area

#### REFERENCE

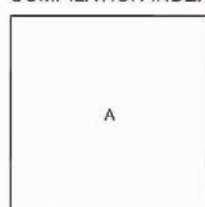
NH 84 National Highway No. 84.

#### NOTES :-

Heights are in metres and above Indian mean sea level.  
Contours are approximate.  
The triangulated heights and contours in this sheet have not been adjusted to the heights of the spirit-levelled bench-marks and may not be strictly in accordance with them.  
Unmetalled road and cart track in this sheet against which there is no descriptive remark, are generally metable in dry season.  
Tanks, shown dry, in this area usually contain water from July to December.

#### COMPILATION INDEX

A. Surveyed during 1956-67. Updated for major details during 2005-06.



Projection - UTM Datum - WGS 84

Magnetic Variation from True North about 1° West in 2005.  
(Decreasing by about 1" annually).

1:50,000

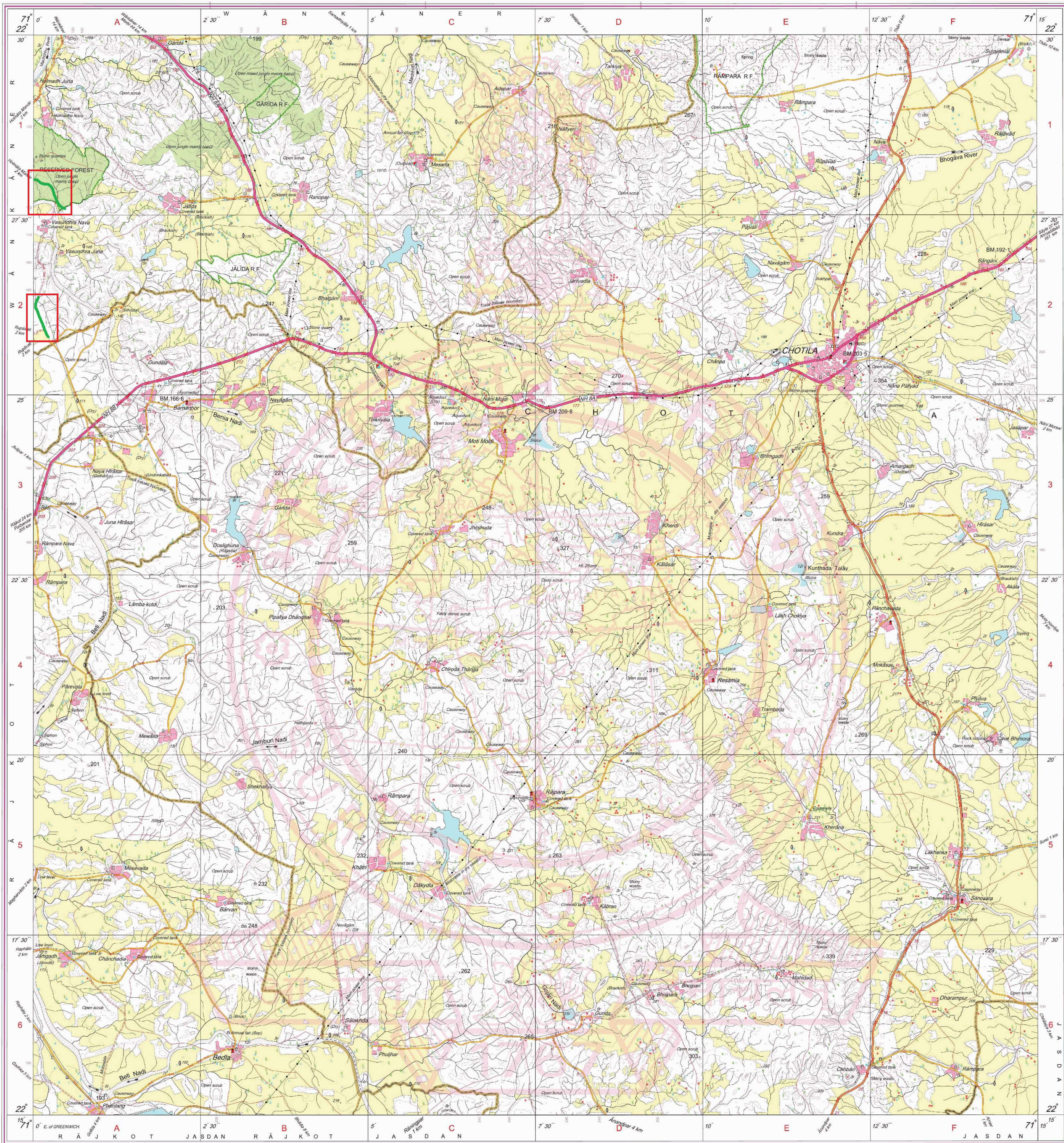
500 m to 1 cm  
Metres 1000 500 0 1 2 Kilometres  
CONTOUR INTERVAL 20 METRES

For further details about this map, please contact

Director  
Gujarat, Damán & Diu Geo-Spatial Data Centre  
Survey of India, Sector-10 (A)  
Gandhinagar.

WEBSITE - [www.surveyofindia.gov.in](http://www.surveyofindia.gov.in)

Reproduction in whole or part by any means is prohibited  
without the written permission of Survey of India, the  
National Mapping Agency.



REG. No. 9954 -SPG D11 (GD & D GDC 1:50,000)-1506-15.

भारत के नक्काशाकर्ता, सर्वेक्षण विभाग, भोपाल, के नियंत्रण में प्रकाशित,  
Published under the direction of Swarna Subba Rao, B.E., Surveyor General of India,  
Survey of India, Hathi Bakula Estate, Post Box No. 37, Dehra Dun-248001 (Uttarakhand),  
Department of Science & Technology, Government of India.

PRINTED AT THE SOUTHERN PRINTING GROUP OF SURVEY OF INDIA.



2	F42K10 (41J/10)	F42K14 (41J/14)	F42L2 (41N/2)
2	F42K11 (41J/11)	F42K15 (41J/15) Rajkot GUJARAT	F42L3 (41N/3)
2	F42K12 (41J/12)	F42K16 (41J/16)	F42L4 (41N/4)

2 Jamnagar, GUJARAT. 3 Surendranagar, GUJARAT.

1st Edition 2011. Price : Rs. 77/-

CONVENTIONAL SYMBOLS

- Express highway, with toll, with bridge, with distance stone
- Roads, metalled according to importance
- Roads, double carriageway, according to importance
- Unmetalled road, Cart-track, Pack-track with pass, Foot-path
- Streams, with track in bed, unfilled, Canal
- Dams, masonry or rock-filled, earthwork, Weir
- River, dry with water channel, with island & rocks, Tidal river
- Submerged rocks, Shoal, Swamp, Reeds
- Wells, lined, unfilled, Tube-well, Spring, Tanks, perennial, dry
- Embankments, road or rail, bank, Broken ground
- Railways, broad gauge: double, single with station, under constn.
- Railways, other gauges: double, single with distance stone, do
- Mineral line or tramway, Kin. Cutting with tunnel
- Contours with sub-features, Rocky slopes, Cliffs
- Sand features: (1) flat, (2) sand-hills(permanent), (3) dunes(shifting)
- Towns or Villages: inhabited, deserted, Fort
- Huts: permanent, temporary, Tower, Antiquities
- Temple, Chhatri, Church, Mosque, Idgah, Tomb, Graves
- Lighthouse, Lightship, Buoys, lighted, unlighted, Anchorage
- Mine, Vine on trellis, Grass, Scrub
- Palms: palmyra, other, Plantain, Conifer, Bamboo, Other trees
- Areas: cultivated, wooded, Surveyed tree
- Boundary, international
- state, demarcated, undemarcated
- district, subdivision, tahsil or taluk, forest
- Boundary pillars: surveyed, unlocated
- Heights, triangulated, station, point, approximate
- Bench-mark: geodetic, tertiary, canal
- Post office, Overhead tank
- Rest house or inspection bungalow, Circuit house, Police station
- Camping ground, Forest: reserved, protected
- Spaced names: administrative, locality or tribal
- Hospital, Dispensary, Veterinary, Hospital / Dispensary
- Aerodrome, Helipad, Tourist site
- Power line: with pylons surveyed, with poles unsurveyed

Demanded Forest Area

REFERENCE

NH 8 B National Highway No.8 B.

NOTES :-

- Heights are in metres and above Indian mean sea level.
- Contours are approximate.
- A relative height, e.g., 8, represents the approximate height, in metres, between the top and bottom of a steep slope.
- Cart-tracks in this sheet are generally motorable (four-wheel drive).
- Tanks in this area usually contain water from July to February.
- Cultivation is periodic and dependent on rainfall.

COMPILATION INDEX

- A. Compiled from 1:25,000 records surveyed during 1989 to 1993.
- Updated for major details during 2005-06.

Projection - UTM Datum - WGS 84

Magnetic Variation from True North about 1° West in 2005.

(Decreasing by about 1° annually).

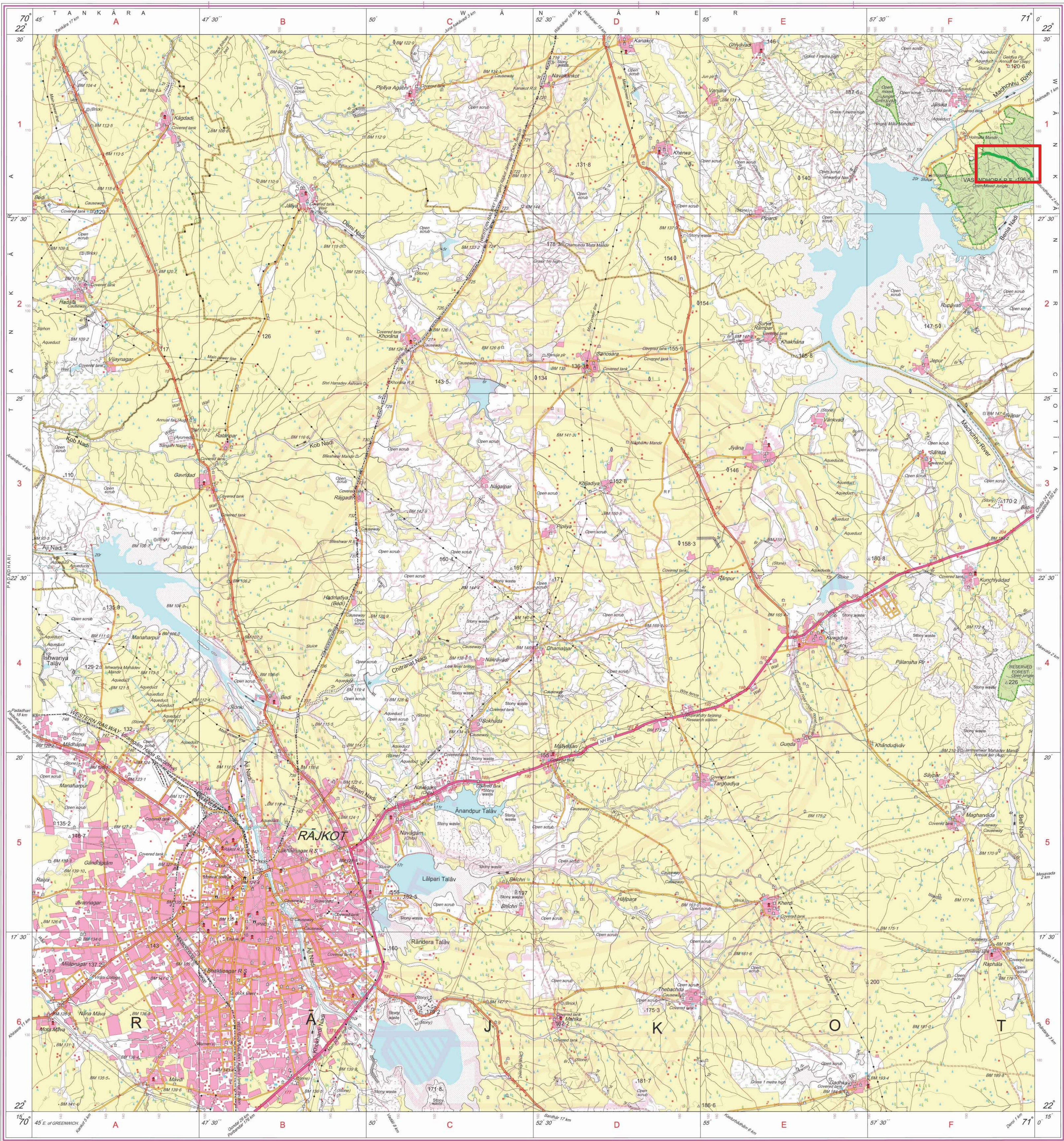


For further details about this map, please contact

Director  
Gujarat, Damán & Diu Geo-Spatial Data Centre  
Survey of India, Sector 10-A  
Gandhinagar.

WEBSITE - www.surveyofindia.gov.in

Reproduction in whole or part by any means is prohibited  
without the written permission of Survey of India, the  
National Mapping Agency.



REG. No. 900 -SPG D/12 (GD&D GDC-1:50,000)-150815.

भारत के महासर्वेक्षक, सर्वोच्च स्तर, नैपथ्य, के निदेशन में प्रकाशित,  
Published under the direction of Swarna Subba Rao, B.E., Surveyor General of India,  
Survey of India, Hattibarkala Estate, Post Box No.37, Dehra Dun-248001 (Uttarakhand)  
Department of Science & Technology, Government of India.

PRINTED AT THE SOUTHERN PRINTING GROUP OF SURVEY OF INDIA.

- REFERENCES TO RAJKOT
- 1 Museum and Park
  - 2 Alifred High school
  - 3 Zila Parishad Office
  - 4 Accountant General's Office
  - 5 Lal Bahadur Shastri Maidan
  - 6 Virshi Mahila collage
  - 7 Palace
  - 8 Rajkumar College
  - 9 Municipal Office
  - 10 Bus Station
  - 11 Rameshkriashra Ashram
  - 12 Janta Park
  - 13 Police Lines
  - 14 Central Jail