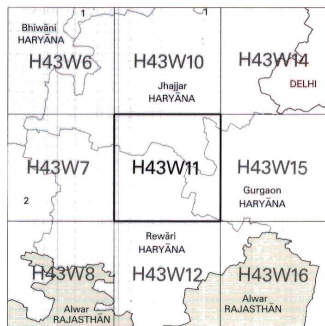


NOT FOR EXPORT

OPEN SERIES
MAP

No. H43W11

Scale 1:50,000



1 Rohtak, HARYĀNA.
2 Mahendragarh, HARYĀNA.

भारतीय सर्वेक्षण विभाग

SURVEY OF INDIA

1st Edition 2007.

Price : Rs. 77

CONVENTIONAL SYMBOLS

[illegible]

REFERENCES

NR ML (MG)	NORTHERN RAILWAY Main Line (Metre gauge)
NH 71	NATIONAL HIGHWAY No. 71

NOTES :-

Contours are approximately 100 m apart.

Heights are in metres and above Indian mean sea level.

A relative height, e.g.3, represents the approximate height: in metres, between the top and bottom of a steep slope.

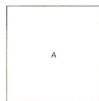
Distance zones along JAWAHAR LAL NEHRU CANAL are 1,000 metres apart and every existing stone is shown, whereas along other canals these are 1,000 feet apart and every existing fifth stone is shown.

Tanks shown dark in this area usually contain water from July to March.

Unsettled roads and tracks in the desert are generally motorable in dry season. Permission to use these along such tracks is required from the Irrigation authorities.

3,000-acre rectangulation projects of Bhikra Dam Project survey with their numbers are shown as tertiary bench-marks that K 17/9 - BM 256 3

COMPILATION INDEX



Projection – UTM Datum – WGS 84

Magnetic Variation from True North about $\frac{1}{2}^{\circ}$ East in 2000.

1:50,000

	1	2
--	---	---

CONTOUR INTERVAL 10 METRES

For further details about this map, please contact
Director

Haryana Geo-Spatial Data Centre

Survey of India, Sector 32 A
Chandigarh.

Fax : 0172 - 2604671

WEBSITE – www.surveyofindia.gov.in

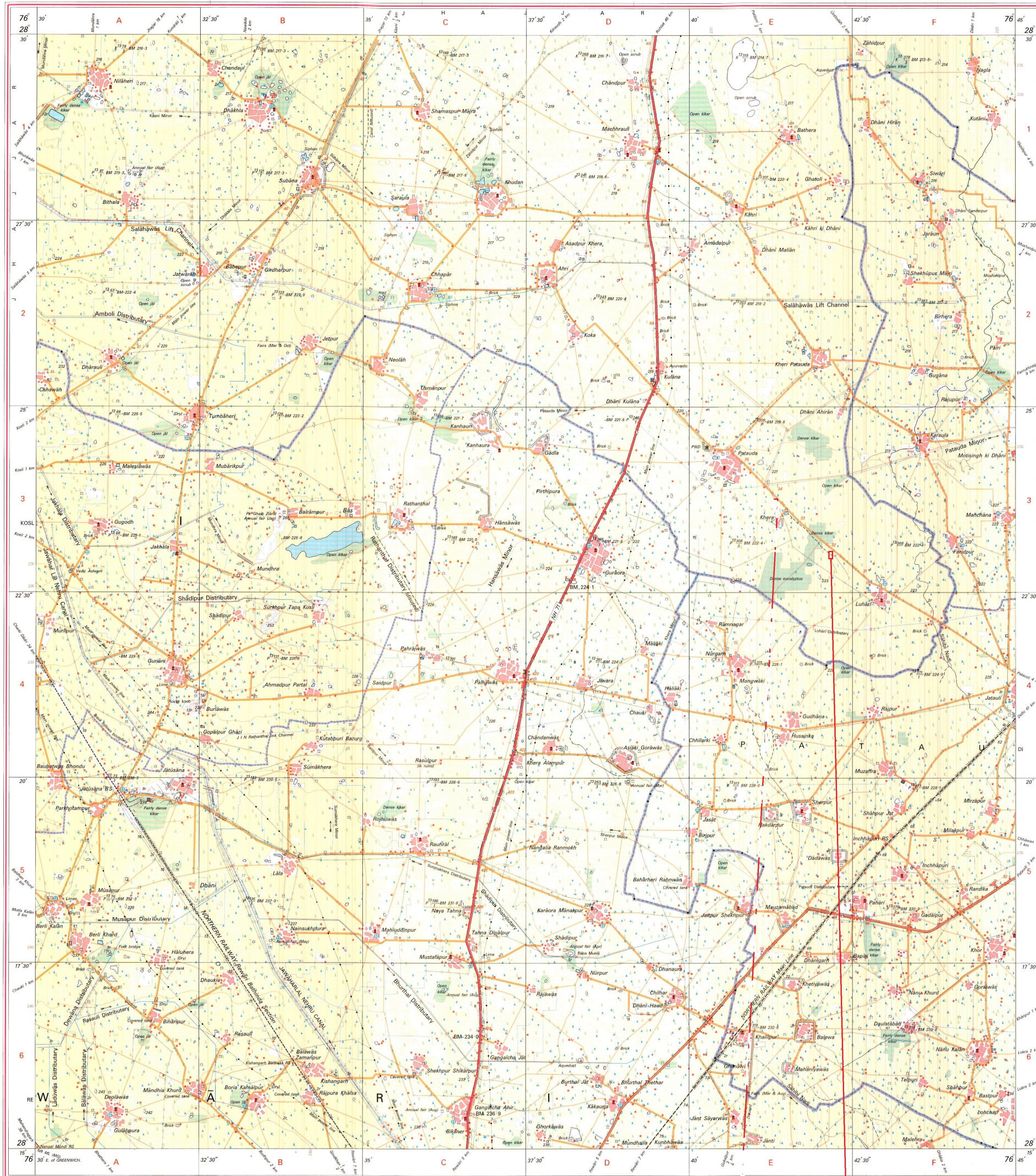
in whole or part by any means is prohibited.

written permission of Survey of India,

Adopting Agency.

Reproduction in whole or part by any means is prohibited
without the written permission of Survey of India, the
National Mapping Agency.

GOVERNMENT OF INDIA COPYRIGHT, 2007.



REG. No. 66(0)-WPG D 07 @Haryana GDC-1:50,000-4510-50211.

भारत के मापनोपकरण मंत्रालय एम० गोपाल राव, बी०टेक०, पी० जी० डि० (एरियल फोटो), एम०आई०एम०डी०, एम०आई०ए०, एफ०आई०ए०एम०, के मिनेशन के प्रकाशन.
Published under the direction of Major General M. Gopal Rao, B.Tech., P.G.Dip. (Aerial Photo), MIM, MCA, FIS, Surveyor General of India,
Survey of India, Hāthibarkala Estate, Post Box No. 37, Dehra Dūn - 248001 (Uttarākhānd)
Department of Science & Technology, Government of India.

Farm House At Village Luhari Jhajjar
Wild Flower Developers Pvt. Ltd.