

NOT FOR EXPORT

OPEN SERIES
MAP

No. H43W1

Scale 1:50,000

Hisar HARYANA H43P16	H43Q4	Jind HARYANA H43Q8
H43V13	Bhiwani HARYANA H43W1	Rohtak HARYANA H43W5
H43V14	H43W2	Jhajjar HARYANA H43W6

1 Sonipat, HARYĀNA.

भारतीय सर्वेक्षण विभाग

SURVEY OF INDIA

1st Edition 2006.

Price : Rs. 50 /-

CONVENTIONAL SYMBOLS

Express Highway: with toll; with bridge; with distance stone

Roads, metalled: according to importance

Roads, double carriageway: according to importance

Unmetalled road: Cart-track; Pack-track with pass; Foot-path

Streams: with track in bed; undefined: Canal

Dams: masonry or rock-filled; earthwork. Weir

River: dry with water channel; with island & rocks. Tidal river

Submerged rocks. Shoal. Swamp. Reeds

Wells: lined; unlined. Tube-well. Spring. Tanks: perennial; dry

Embankments: road or rail; tank. Broken ground

Rivers, broad gauge: double; single with station; under constr.

Railways, other gauges: double; single with distance stone; do

Mineral line or tramway. Kiki. Cutting with tunnel

Contours with sub-divisions. Rocky slopes. Cliffs

Sand features: (filzand/filzand hills) permanent; (3) dunes/shiftings

Towns or Villages: inhabited; deserted. Fort.

Huts: permanent; temporary. Tower. Antiquities

Temple. Chhatrai. Church. Mosque. Igloo. Tomb. Graves

Lighthouse. Lightship. Buoys: lighted; unlighted. Anchorage

Mine. Vine on trellis. Grass Scrub

Palms: palmud; other. Plantain. Conifer. Bamboo. Other trees

Places: cultivated; wooded. Surveyed tree

Boundary, international

state: demarcated; undemarcated

district: surveyed; tahsil or taluk; forest

Pillars: surveyed; unlocated; village junction

Heights, triangulation: station; point; approximate

Bench-mark: geodetic; tertiary; canal; antiquities

Post office. Telegraph office. Overhead tank

Rest house or Inspection bungalow. Circuit house. Police station

Camping ground: Forest: reserved; protected

Spaced names: administrative; locality or tribal

Hospital. Dispensary. Veterinary hospital

Aerodrome. Helipad. Tourist site

Power line: with poles unmarked; with poles unmarked

REFERENCE

NH 10 National Highway No. 10

NOTES :-

NOTE :-
 Heights are in metres and above Indian mean sea level.
 Contours are approximate.
 A relative height, e.g. 3r, represents the approximate height, in metres, between the top and bottom of a steep slope.
 Important government buildings are shown in black with names.
 Tanks shown dry, in this area usually contain water from July to December.
 Tube-wells are numerous throughout the sheet, only the important ones have been shown.
 Unmetalled roads and cart-tracks in this sheet are generally motorable in dry season. Permission to use those along canals is required from the Irrigation authorities.

COMPILATION INDEX

A. Surveyed during 1990–91. Updated for major details during 2005–06.

Projection - UTM Datum - WGS 84

Magnetic Variation from True North about $\frac{3}{4}^{\circ}$ East in 2000.
(Increasing by about $2'$ annually).

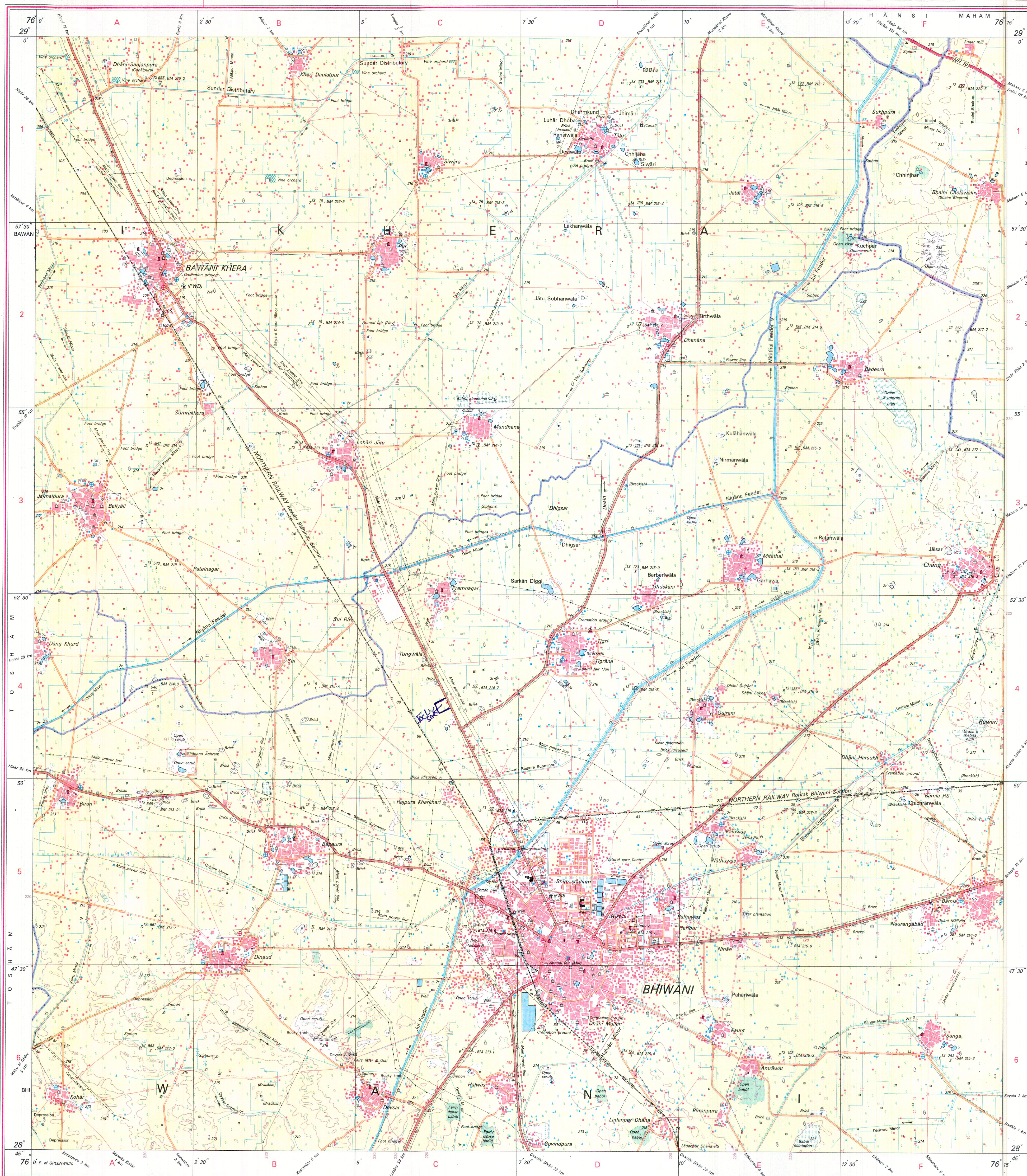
1:50 000

For further details about this map, please contact
Director
Haryāna Geo-Spatial Data Centre
Survey of India, Sector 32 A
Chandigarh.
Fax : 0172 - 2604671

WEBSITE – www.surveyofindia.gov.in

Reproduction in whole or part by any means is prohibited without the written permission of Survey of India, the National Mapping Agency.

GOVERNMENT OF INDIA COPYRIGHT 2005



REG. No. 18 (C)-WPG D 06 (Harvina GDC-1:50,000) 16/0

भारत के महासर्वेक्षक नेजर जनरल एम० गोपाल राव, पी०टी०सी०, पी०जी०डिप्लो०(एरियल फोटो), एम०आई०एस०आई०, एम०सी०ए०ए०, एफ०आई०एस०ए०, के विज्ञान में प्रकाशित,
Published under the direction of Major General M. Gopal Rao, B.Tech., P.G.Dip. (Aerial Photo), MIME, MCA, FIS, Surveyor General of India,
Survey of India, Hāthibarkala Estate, Post Box No. 37, Dehra Dūn - 248001 (Uttarānchal)
Department of Science & Technology, Government of India

PRINTED AT THE WESTERN PRINTING GROUP OF SURVEY OF INDIA