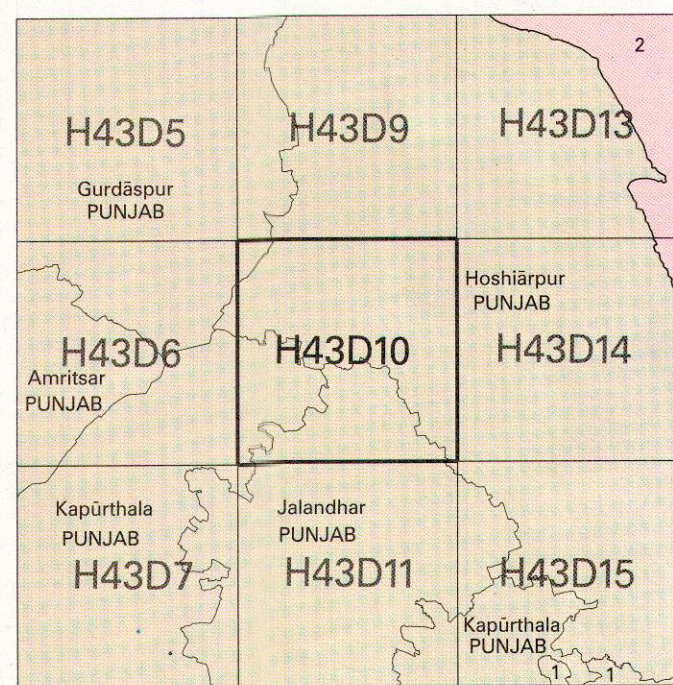




No. H43D10
Scale 1:50,000



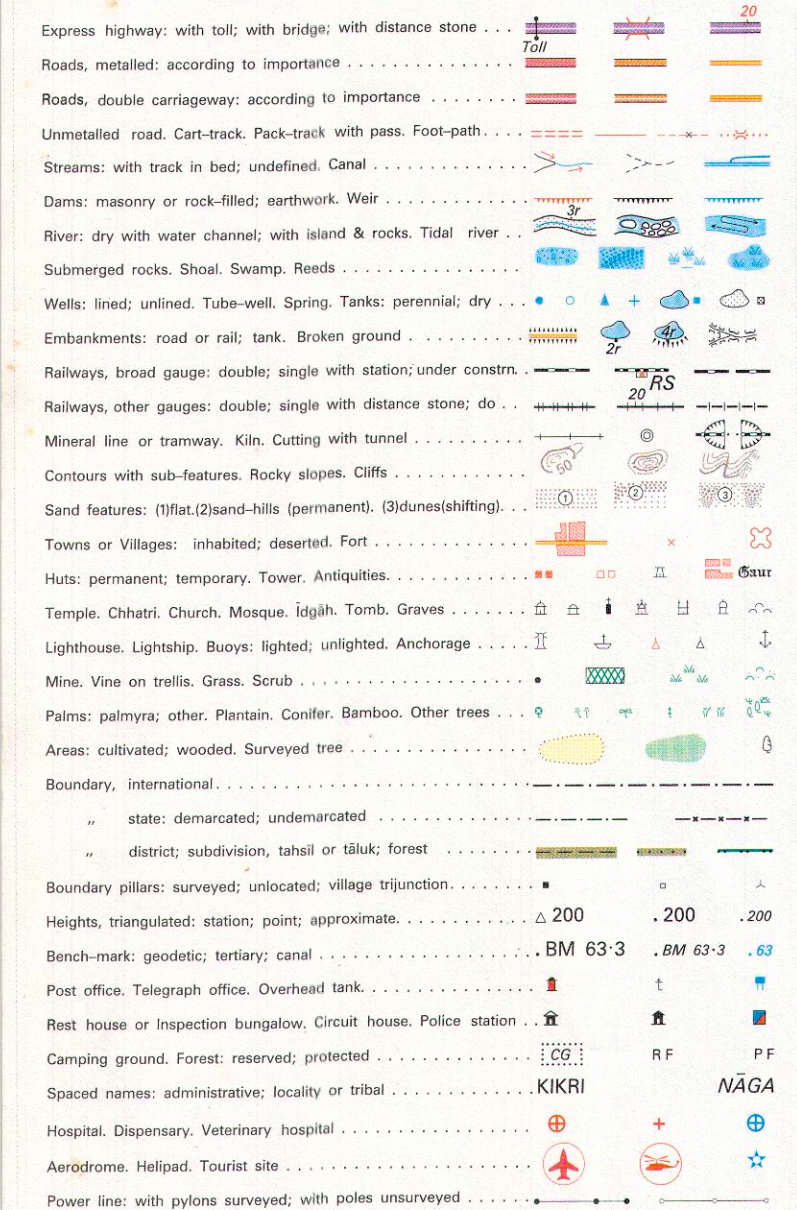
1 Nawanshahr, PUNJAB.
2 Una, HIMACHAL PRADESH.

भारतीय सर्वेक्षण विभाग SURVEY OF INDIA

1st Edition 2007.

Price : Rs. 50/-

CONVENTIONAL SYMBOLS



REFERENCE

NH 1A

NOTES :-

Permission to use cart-tracks and unmetalled roads along canals is required from the Irrigation authorities. A relative height e.g., 6, marked along a canal, indicates the height of the top of the canal bankment above the adjacent country. The area adjoining the Beas River is liable to change owing to continual fluctuation in the course of the river. Distance shown along protective embankments are 1,000 feet apart and every existing lift shown is shown. Tanks shown dry, in this area usually contain water from July to December. Tube-wells are numerous throughout the sheet, only the important ones have been shown. A relative height, e.g., 6, represents the approximate height, in metres, between the top and bottom of a steep slope.

COMPILATION INDEX

A. Compiled from 1:25,000 survey, 1984-95. Updated for major details during 2005-06.

Projection - UTM Datum - WGS 84

Magnetic Variation from True North about 1 1/2° East in 2005. (increasing by about 1° annually).

1:50,000

Scale bar showing 0 to 3 Kilometres.

For further details about this map, please contact Director

Punjab & Chandigarh Geo-Spatial Data Centre

Survey of India, Sector 32 A

Chandigarh.

Fax : 0172 - 2606916

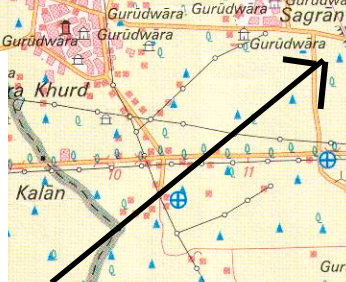
WEBSITE - www.surveyofindia.gov.in

Reproduction in whole or part by any means is prohibited without the written permission of Survey of India, the National Mapping Agency.

GOVERNMENT OF INDIA COPYRIGHT, 2007.



Menghrowal Cho
RD 65-95 Left Side
(Jalandhar Range)



भारत के सर्वेक्षण विभाग द्वारा तैयार किया गया यह नक्शा, 1984-95 के सर्वेक्षण डेटा और 2005-06 के अपडेटेड डेटा का उपयोग करके तैयार किया गया है।
Published under the direction of Major General M. Gopal Rao, B.Tech., P.G.Dip. (Aerial Photo), MIMC, MCA, FIS, Surveyor General of India.
Survey of India, Hattibarkala Estate, Post Box No. 37, Dehra Dun - 248001 (Uttarakhand)
Department of Science & Technology, Government of India.

PRINTED AT THE WESTERN PRINTING GROUP OF SURVEY OF INDIA.