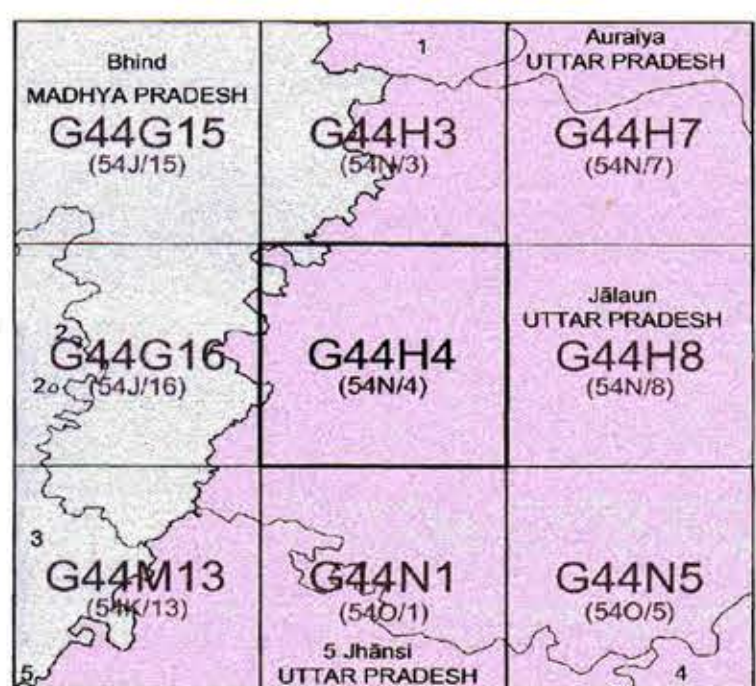


No. G44H4

Scale 1:50,000



PLOTTER PRINT

भारतीय सर्वेक्षण विभाग SURVEY OF INDIA

1st Edition 2011. Rs 250 Price: Rs. 70/-

CONVENTIONAL SYMBOLS

- Express highway, with toll; with bridge; with distance stone
- Roads, metalled; according to importance
- Roads, double cartilageway; according to importance
- Unmetalled road, Cart-track, Pack-track with pass, Foot-path
- Streams, with track in bed; undefined, Canal
- Dams, masonry or rock-filled, earthwork, Weir
- River, dry with water channel; with island & rocks, Tidal river
- Submerged rocks, Shoal, Swamp, Reeds
- Wells: lined, unlined, Tube-well, Spring, Tanks, perennial dry
- Embankments: road or rail; tank, Broken ground
- Railways, broad gauge: double, single with station; under constr.
- Railways, other gauges: double, single with distance stone; do.
- Mineral line or tramway, Kin. Cutting with tunnel
- Contours with sub-features, Rocky slopes, Cliffs
- Sand features: (1) flat, (2) sand-hills (permanent), (3) dunes (shifting)
- Towns or Villages: inhabited, deserted, Fort
- Huts: permanent, temporary, Tower, Antiquities
- Temple, Chhatra, Church, Mosque, Idgah, Tomb, Graves
- Lighthouse, Lightship, Buoy: lighted, unlighted, Anchorage
- Mine, Vine on trellis, Glass, Scrub
- Palms: palmyra, other, Plantain, Conifer, Bamboo, Other trees
- Areas: cultivated, wooded, Surveyed tree
- Boundary, international
- state, demarcated; undemarcated
- district, subdivision, tahsil or taluk; forest
- Boundary pillars: surveyed; unlocated
- Heights, triangulated; station; point, approximate
- Bench-mark: geodetic; tertiary, canal
- Post office, Telegraph office, Overhead tank
- Rest house or inspection bungalow, Court house, Police station
- Camping ground, Forest, reserved, protected
- Spotted names: administrative; locality or tribal
- Hospital, Dispensary, Veterinary Hospital / Dispensary
- Aerodrome, Helipad, Tourist site
- Power line: with pylons surveyed; with poles unsurveyed

Legend

- Proposed Protected Forest Land to be diverted
- Non Forest Land

NOTES :-
 Heights are in metres and above Indian mean sea level.
 Contours are approximate.
 A relative height, e.g., 5, represents the approximate height, in metres, between the top and bottom of a steep slope.
 The kilometre stone numbers along roads and canals are shown in slant type, e.g., 5, whereas milestone numbers are shown in upright type, e.g., 57.
 The unmetalled road along Kuthunda Branch (BETWA CANAL) and cart-tracks along other canals are usually motorable in dry season. Permission to use these is required from the Irrigation authorities.
 A relative height, e.g., 5, marked along canal, indicates the height of the top of the canal embankment above the adjacent country.
 Perennial streams in this sheet are generally fordable from October to June at the places indicated as such.
 Tracks, shown dry in this area, usually contain water from July to December.
 Wells are numerous throughout the sheet; only the important ones have been shown.
 The state boundary between Madhya Pradesh and Uttar Pradesh States has been surveyed as pointed out by the local officials on the ground but has not been verified by the Governments concerned.

COMPILATION INDEX

A Modern Survey 1973-74. Updated for major details during 2005-06

Mr. A.K. Gupta

Executive Engineer

Orai, Division, U.P. Jal Nigam

Gramin, Orai (U.P.)

Projection - UTM Datum - WGS 84

Magnetic Variation from True North about 0° in 2005.

(Increasing by about 1° East annually).

500 m to 1 cm

1:50,000

2 cm to 1 km

CONTOUR INTERVAL 20 METRES

For further details about this map, please contact

Director

East Uttar Pradesh Geo-Spatial Data Centre

Survey of India

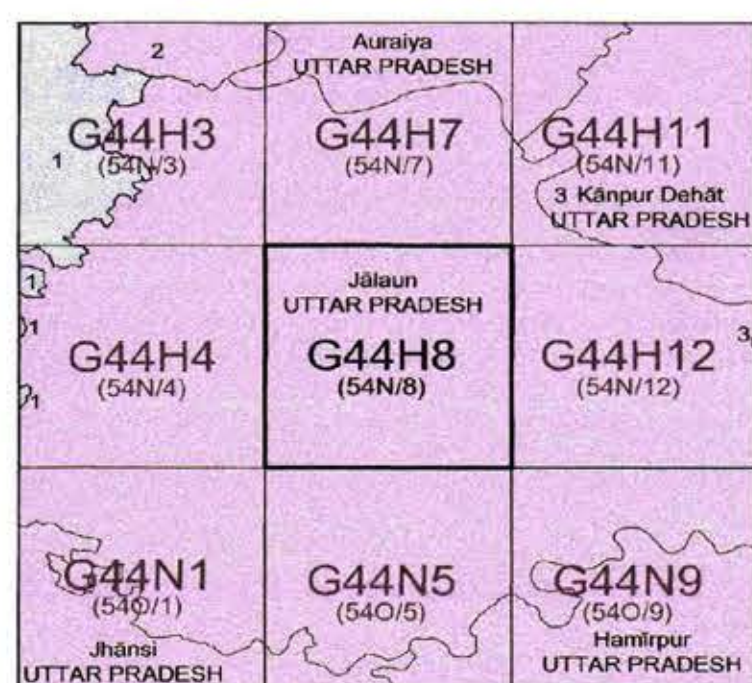
B-2 Block, 2nd Floor, PICUP Bhawan, Gomti Nagar, Lucknow.

WEBSITE - www.surveyofindia.gov.in



No. G44H8

Scale 1:50,000



1 Bhind, MADHYA PRADESH.
2 Etawah, UTTAR PRADESH.

PLOTTER PRINT

भारतीय सर्वेक्षण विभाग SURVEY OF INDIA

1st Edition 2011.

Rs 250

Price: Re. 70/-

CONVENTIONAL SYMBOLS



Legend

Proposed Protected Forest Land to be diverted

Non Forest Land

REFERENCE

NH 25 National Highway No. 25

NOTES

Heights are in metres and above Indian mean sea level.
Contours are approximate.
A relative height, e.g., 40 represents the approximate height, in metres, between the top and bottom of a steep slope.
The kilometre stone numbers along roads and Canals are shown in slant type, e.g., '5' whereas milestone numbers are shown in upright type, e.g., '5'.
All cart-tracks along canals are generally motorable in dry season whereas other cart-tracks, against which there is no descriptive remarks, generally jeepsable in dry season. Permission to use those along canals is required from the Irrigation authorities.
A relative height, e.g., 20 marked along canal, indicates the height of the top of the canal embankment above the adjacent country.
Perennial streams in this sheet are generally fordable from October to June at the places indicated as such.
Tanks, shown dry in this area, usually contain water from July to December.
Wells are numerous throughout the sheet; only the important ones have been shown.

COMPILATION INDEX

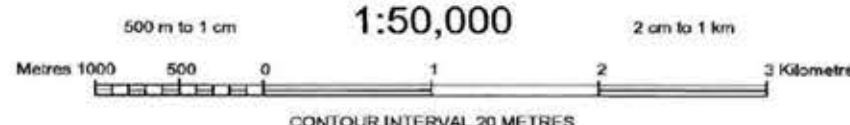
A Modern Surveyed during 1973-74. Updated for major details during 2005-06.

Mr. A.K. Gupta
Executive Engineer
Orai, Division, UP Jal Nigam
Gramin, Orai (U.P.)

Projection - UTM Datum - WGS 84

Magnetic Variation from True North about 0° in 2005.

1:50,000



CONTOUR INTERVAL 20 METRES

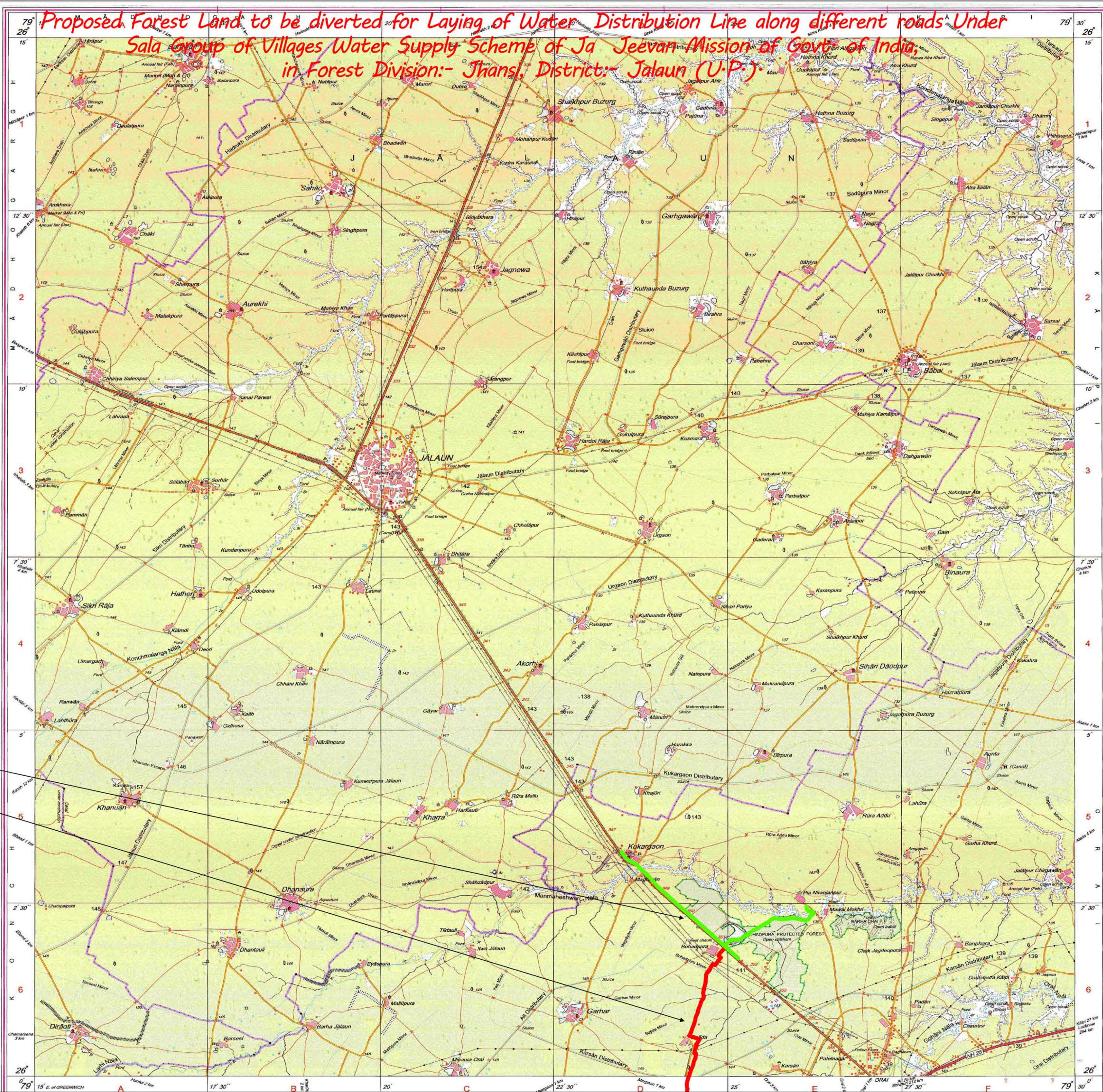
For further details about this map, please contact

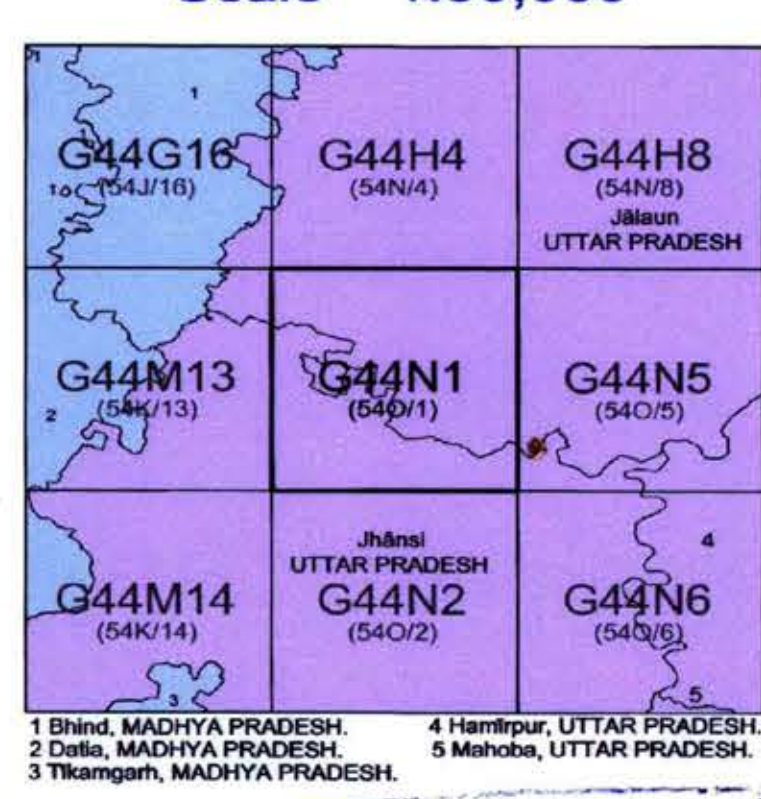
Director

East Uttar Pradesh Geo-Spatial Data Centre

Survey of India

B-2 Block, 2nd Floor, PICUP Showan, Gomti Nagar, Lucknow.





1 Behind, MADHYA PRADESH.
2 Datta, MADHYA PRADESH.
3 Tikamgarh, MADHYA PRADESH.
4 Hamirpur, UTTAR PRADESH.
5 Mahoba, UTTAR PRADESH.

PLOTTER PRINT

भारतीय सर्वेक्षण विभाग SURVEY OF INDIA

1st Edition 2011.

Price: ₹ 250/-

- CONVENTIONAL SYMBOLS
- Express highway: with toll, with bridge, with distance stone
 - Roads, metalled: according to importance
 - Roads, double cartway: according to importance
 - Unmetalled road: cart-track, pack-track with pass, foot-path
 - Streams: with track in bed, undefined, Canal
 - Dams: masonry or rock-filled, earthwork, Weir
 - River: dry with water channel; with island & rocks, Tidal river
 - Submerged rocks: Shoal, Swamp, Reeds
 - Wells: lined, unlined, Tube-well, Spring, Tanks: perennial, dry
 - Embankments: road or rail; tank, Broken ground
 - Railways: broad gauge: double, single with station, under constr
 - Railways, other gauges: double, single with distance stone, do.
 - Mineral line or tramway, Kin. Cutting with tunnel
 - Contours with sub-features, Rocky slopes, Cliffs
 - Sand features: (1) flat (2) dune-hills (permanent) (3) dunes (shifting)
 - Towns or Villages: inhabited, deserted, Fort
 - Huts: permanent, temporary, Tower, Antiquities
 - Temple: Chhatra, Church, Mosque, Idgah, Tomb, Graves
 - Lighthouse, Lightship, Buoy: lighted, unlighted, Anchorage
 - Mine: Vine on trails, Grass, Scrub
 - Palms: palmyra, other, Plantain, Conifer, Bamboo, Other trees
 - Areas: cultivated, wooded, Surveyed tree
 - Boundary: international
 - state, demarcated, undemarcated
 - district, subdivision, tahsil or taluk, forest
 - Boundary pillars: surveyed, unlocated
 - Height, triangulated station, point, approximate
 - Bench-mark: geodetic, tertiary, canal
 - Post office, Telegraph office, Overhead tank
 - Rest house or inspection bungalow, Circuit house, Police station
 - Camping ground, Forest: reserved, protected
 - Spaced names: administrative, locality or tribal
 - Hospital, Dispensary, Veterinary, Hospital / Dispensary
 - Aerodrome, Helipad, Tourist site
 - Power line: with poles surveyed, with poles unsurveyed

Legend

- Proposed Protected Forest Land to be diverted
- Non Forest Land

REFERENCE

NH 25 National Highway No. 25

NOTES :-

Heights are in metres and above Indian mean sea level.

Contours are approximate.

A relative height e.g., 10, represents the approximate height, in metres, between the top and bottom of a steep slope.

The kilometre stone numbers along roads, railways and canals are shown in slant type, e.g., 3, whereas milestone numbers are shown in upright type, e.g., 10.

Wells are numerous throughout the sheet, only the important ones have been shown.

A relative height e.g., 10, marked along a canal, indicates the height of the top of canal embankment above the adjacent country.

Unmetalled roads along branch canals and distributaries are shown by cart-track symbols. These and other cart-tracks along canals are generally not suitable for heavy traffic. Other cart-tracks against which there is no descriptive remark, are passable in dry season. Permission to use those along canals is required from the irrigation authorities.

Tanks, shown dry in this area, usually contain water from July to December.

COMPILATION INDEX

A Modern Survey 1973-74. Updated for major details during 2005-06 and administrative boundaries updated during 2007-08.

Mr. A.K. Gupta
Executive Engineer
Orai, Division, U.P. Jal Nigam
Gorain, Orai (U.P.)

Projection - UTM Datum - WGS 84

Magnetic Variation from True North about 0° in 2005.
(Increasing by about 1° East annually.)

1:50,000

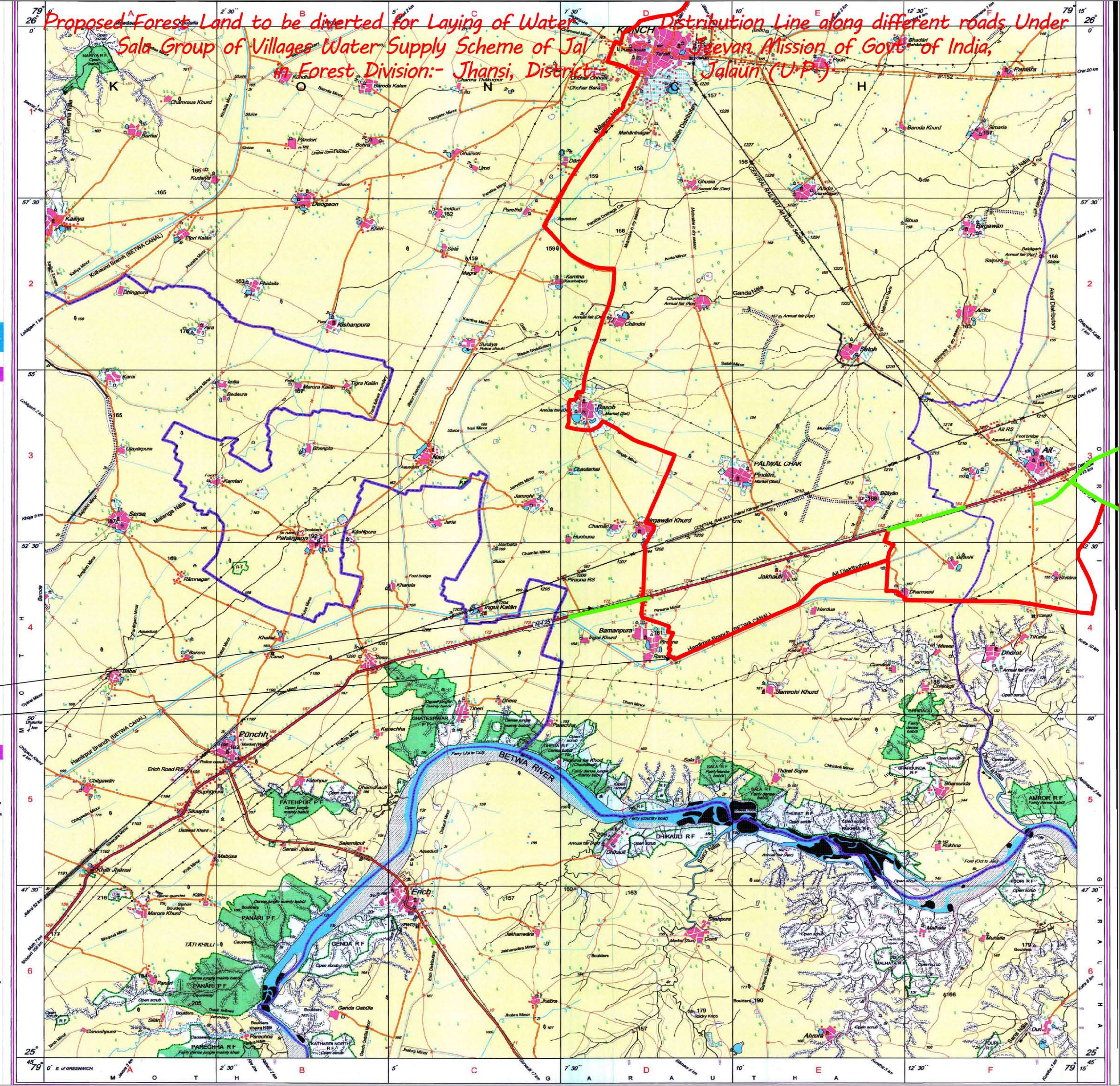
500 m to 1 cm

2 cm to 1 km

CONTOUR INTERVAL 20 METRES

For further details about this map, please contact
Director
East Uttar Pradesh Geo-Spatial Data Centre
Survey of India
B-2 Block, 2nd Floor, PICUP Bhawan, Gomti Nagar, Lucknow.

WEBSITE - www.surveyofindia.gov.in



No.G44N5

Scale 1:50,000



1 Bhind, MADHYA PRADESH.
2 Kānpur Dehat, UTTAR PRADESH.
3 Mahoba, UTTAR PRADESH.

PLOTTER PRINT

भारतीय सर्वेक्षण विभाग SURVEY OF INDIA

1st Edition 2011.

IS 2504 = Price :

CONVENTIONAL SYMBOLS

Express Highway: with toll; with bridge; with distance stone	
Road metalled: according to importance	
Roads double carriageway: according to importance	
Unmetalled Road: Cart-track, Puck-track and pass. Foot-path	
Streams: with track in bed; undefined. Canal	
Dams: masonry or rock-filled; earthwork. Weir	
Wells: lined; unlined. Tube-well. Spring. Tanks: perennial; dry	
Embankments: road or rail; tanks. Broken ground	
Railways, broad gauge: double; single with station; under constrn	
Railways, other gauges: double; single with distance stone; do.	
Mineral line or tramway. Kin. Cutting with tunnel	
Contours with sub-features. Rocky slopes. Cliffs	
Settlements: (1) Flat, (2) Sand-hills (perennial vegetation), (3) Sand-hills (seasonal vegetation)	
Towns or Villages: inhabited; unhabited. Fort	
Huts: permanent; temporary. Tower. Antiquities	
Temples. Chhatris. Church. Mosques. Idgahs. Tomb. Graves	
Lighthouses. Lightships. Buoys: red; unlighted. Anchorage	
Mine. Vase on trail. Sub. (1) Sand-hills (perennial vegetation), (2) Sand-hills (seasonal vegetation)	
Palm: other. Plant: Conifer. Bamboo. Other tree	
Forest: cultivated; wooded. Surveyed tree	
Boundary, International	
State: demarcated; undemarcated	
District: subdivision; tahsil or thik; forest	
Boundary, Pillar: surveyed; unlocated	
Height: triangulated; station; public; approximate. A 200	
Bench-mark: geodetic; tertiary; aneroid. BM 63-3	
Post office. Telegraph office. Overhead tank	
Rest house or inspection bungalow. Circuit house. Police station	
Camping ground. Forest: reserved; protected	
Spaced names: administrative; locality or tribal	
Hospital. Dispensary. Veterinary. Hospital / Dispensary	
Aerodrome. Helipad. Tourist site	
Pier line: with pylon surveyed; with poles unsurveyed	

Legend
Proposed Protected Forest Land to be diverted
Non Forest Land

REFERENCE

AN 26 National Highway No. 26

NOTES

Heights are in metres and above Indian mean sea level.
Contours are approximate.
A relative height, e.g., 30r, against a well, indicates its total depth in meter.
Unmetalled roads and cart-tracks in this sheet are generally mettable in dry season. Permission to use these along season is required from irrigation authorities.
The district boundaries in the Betwa and Dhasan River follow the main deep water channels and will change with the fluctuations of these channels.
Trails shown dry, in this area usually contain water from July to December.
Tube-wells are numerous throughout the sheet, only the important ones have been shown.
The kilometre stone numbers along railways and roads are shown in solid type, e.g., '5' whereas milestone numbers are shown in upright type, e.g., '5'.

COMPILATION INDEX

A Surveyed during 1973-74. Updated for major details during 2006-06 and administrative boundaries updated during 2007-08.

Mr. A.K. Gupta
Executive Engineer
Orai, Division, UP Jal Nigam

Projection - UTM Datum - WGS 84 Orai (U.P.)

Magnetic Variation from True North about 0° in 2006.
(Increasing by about 1° East annually).

1:50,000

500 m to 0 2 cm to 1 km
Metres 1000 500 0 1 2 3 Kilometres

CONTOUR INTERVAL 20 METRES

For further details about this map, please contact
Director
East Uttar Pradesh Geo-spatial Data Center
Survey of India
B-2 Block, 2nd Floor, PICUP Bhawan, Gomti Nagar, Lucknow.

WEBSITE - www.surveyofindia.org.in

