

No. H43Q4

Scale 1:50,000

H43P15	H43Q3	H43Q7
H43P16	H43Q4	H43Q8
H43V13	H43W1	H43W5

1 Fatehabad, HARYANA.
2 Karnal, HARYANA.
3 Sonapat, HARYANA.

भारतीय सर्वेक्षण विभाग

SURVEY OF INDIA

1st Edition 2007.

Price : Rs. 50/-

Rs 118

CONVENTIONAL SYMBOLS

Express highway with toll; with bridge; with distance stone	20
Roads, metalled; according to importance	10
Roads, double carriage-way; according to importance	5
Unmetalled road; Cart-track; Pack-track with pass; Foot-path	2
Streams; with track in bed; undrained; Canal	1
Dams; masonry or rock-filled; earthwork; Weir	0.5
River; dry with water channel; with island & rocks; Tidal river	0.2
Submerged rocks; Shoal; Swamp; Reeds	0.1
Wells; lined; unlined; Tube-well; Spring; Tanks; perennial; dry	0.05
Embankments; road or rail; tank; Broken ground	0.02
Railways; broad gauge; double; single with station; under constr.	0.01
Railways; other gauges; double; single with distance stone; do	0.005
Mineral line or tramway; Kin. Cutting with tunnel	0.002
Contours with sub-features. Rocky slopes. Cliffs	0.001
Sand features: (Tidal) (Island) (Hills) (Permanent) (Seasonal) (Shifting)	0.0005
Towns or Villages; inhabited; deserted; Fort	0.0002
Huts; permanent; temporary; Tower; Antiquities	0.0001
Temple; Chhatra; Church; Mosque; Idgah; Tomb; Graves	0.00005
Lighthouse; Lightship; Buoy; lighted; unlighted; Anchorage	0.00002
Mine; Vine on trellis; Grass; Scrub	0.00001
Palm; palm-tree; other; Plantain; Conifer; Bamboo; Other trees	0.000005
Areas; cultivated; wooded; Surveyed tree	0.000002
Boundary; international	0.000001
state; demarcated; undemarcated	0.0000005
district; subdivision; tahsil or taluk; forest	0.0000002
Pillar; surveyed; unlocated; village junction	0.0000001
Heights; triangulated; station; point; approximate	0.00000005
Bench-mark; geodetic; tertiary; canal	0.00000002
Post office; Telegraph office; Overhead tank	0.00000001
Rest house or inspection bungalow; Circuit house; Police station	0.000000005
Camping ground; Forest; reserved; protected	0.000000002
Spaced names; administrative; locality or tribal	0.000000001
Hospital; Dispensary; Veterinary hospital	0.0000000005
Aerodrome; Helipad; Tourist site	0.0000000002
Power line; with pylons surveyed; with poles unsurveyed	0.0000000001

REFERENCE

NH 10 National Highway No. 10

NOTES

Heights are in metres and above Indian mean sea level.
Contours are approximate.
Canal distance stones are 1000 feet apart and every existing fifth stone is shown.
Tanks shown dry in this area usually contain water from July to December.
Tube-wells are numerous throughout the sheet, only the important ones have been shown.
Unmetalled roads and cart-tracks in this sheet are generally motorable in dry season. Permission to use those along canals is required from the irrigation authorities.
A relative height e.g., 2r represents the approximate height, in metres between the top and bottom of a steep slope.
3,000 - acre reclamation stones of Bhakra Dam - Project Surveys with their numbers are shown as tertiary bench-marks thus: U¹ 138 - BM 219.3.

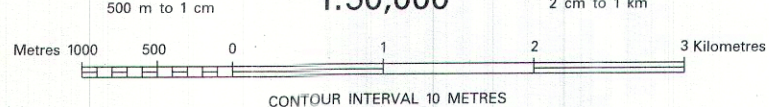
COMPILATION INDEX

A	Surveyed during 1989-90. Updated for major details during 2005-06.
---	--

Projection - UTM Datum - WGS 84

Magnetic Variation from True North about 1° East in 2000.
(increasing by about 2' annually).

1:50,000



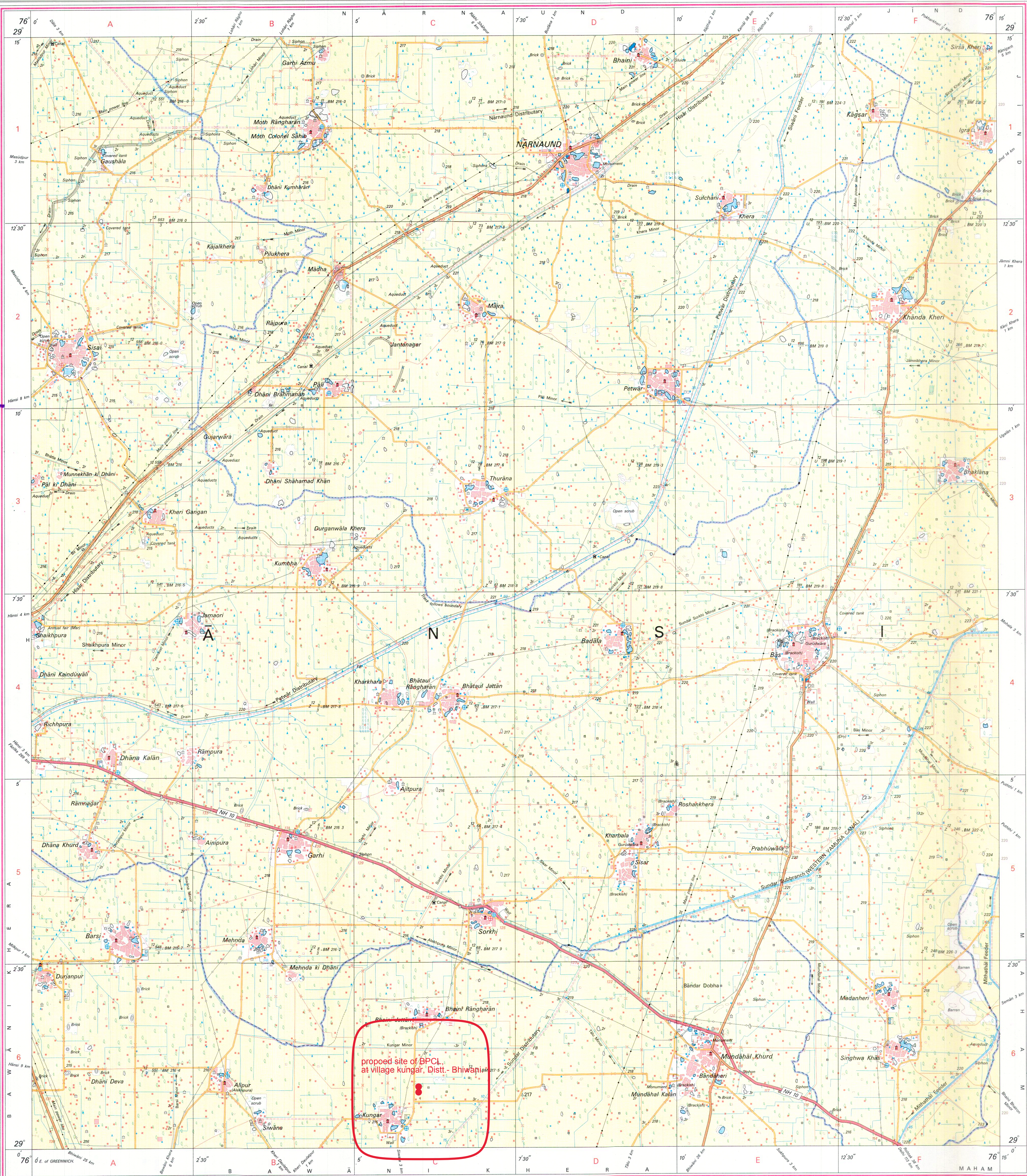
For further details about this map, please contact

Director
Haryana Geo-Spatial Data Centre
Survey of India, Sector 32 A
Chandigarh.
Fax : 0172 - 2604671

WEBSITE - www.surveyofindia.gov.in

Reproduction in whole or part by any means is prohibited
without the written permission of Survey of India, the
National Mapping Agency.

GOVERNMENT OF INDIA COPYRIGHT, 2007.



REG. No. 50/99-WPG D 07 (Haryana GDC-1:50,000) 1510.

भारत के प्रमुख सर्वेक्षण विभाग द्वारा तैयार किया गया है।
Published under the direction of Major General M. Gopal Rao, B.Tech., P.G.Dip. (Aerial Photo) M.I.E. MCA, FIS, Surveyor General of India,
Survey of India, Hithibarkala Estate, Post Box No. 37, Dehra Dun - 248001 (Uttarakhand)
Department of Science & Technology, Government of India.

PRINTED AT THE WESTERN PRINTING GROUP OF SURVEY OF INDIA.