

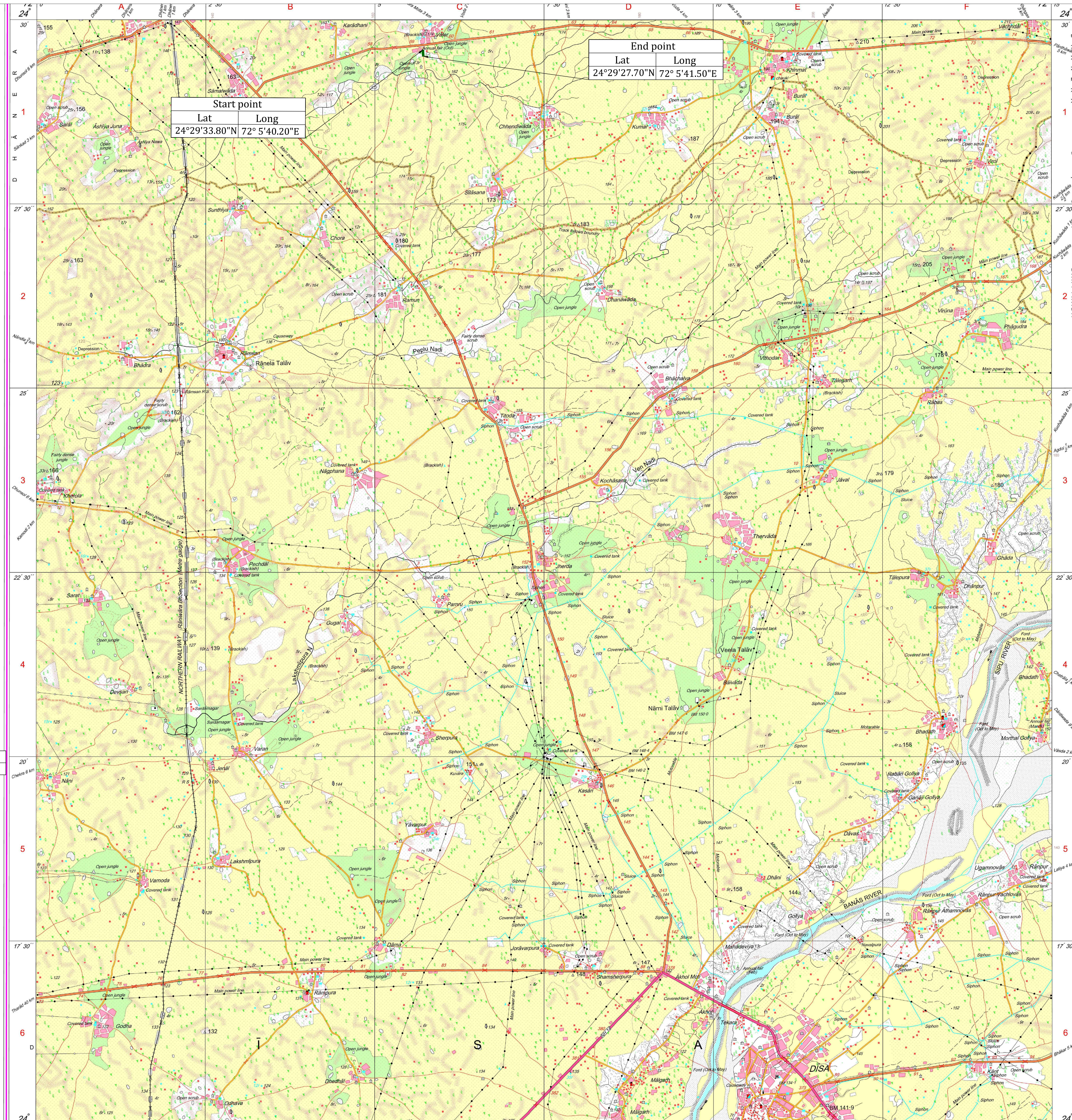
**No. G43S3**  
Scale 1:50,000

G42X14 (40P14)	G43S2 (45D2)	G43S6 (45D6)
G42X15 (40P15)	G43S3 (45D3)	G43S7 (45D7)
G42X16 (40P16)	G43S4 (45D4)	G43S8 (45D8)

भारतीय सर्वेक्षण विभाग SURVEY OF INDIA  
1st Edition 2011. Price : Rs. 70/-

Description	Legend
Proposed Road in Forest	
<p><b>CONVENTIONAL SYMBOLS</b></p> <p>Express highway, with toll, with bridge, with distance stone</p> <p>Roads, metalled, according to importance</p> <p>Roads, double carriageway, according to importance</p> <p>Unmetalled road, Cart-track, Pack-track with pass, Foot-path</p> <p>Streams, with track in bed, unforded, Canal</p> <p>Dams: masonry or rock-filled, earthwork, Weir</p> <p>River, dry with water channel, with island &amp; rocks, Total river</p> <p>Submerged rocks, Shoal, Swamp, Floods</p> <p>Wells, hand-dug, Tube-well, Spring, Tidal, perennial, dry</p> <p>Embankments, road or rail, tank, British ground</p> <p>Railways, broad gauge, double, single with station, under construction</p> <p>Railways, other gauges, double, single with distance stone, 60</p> <p>Mineral line or tramway, Kin, Cutting with tunnel</p> <p>Contours with sub-features, Rocky slopes, Cliffs</p> <p>Sand features (1:50,000) (2:band-shifting) (3:band-shifting)</p> <p>Towns or Villages, inhabited, deserted, Fort</p> <p>Hut, permanent, temporary, Tower, Antiquities</p> <p>Temple, Chhatra, Church, Mosque, Igah, Tomb, Graves</p> <p>Lighthouse, Lightship, Buoy, lighted, unlighted, Anchorage</p> <p>Mine, Vein on hills, Open, Shaft</p> <p>Fences, palmyra, other, Bamboo, Coccol, Bamboo, Other trees</p> <p>Areas, cultivated, wooded, Surveyed tree</p> <p>Boundary, international</p> <p>state, demarcated, undemarcated</p> <p>district, subdivision, taluk or siltak, forest</p> <p>Boundary pillars, surveyed, unlocated</p> <p>Heights, triangulation station, point, approximate</p> <p>Bench-mark, geodetic, tertiary, canal</p> <p>Post office, Overhead tank</p> <p>Rest house or inspection bungalow, Circuit house, Police station</p> <p>Camping ground, Forest, reserved, protected</p> <p>Spanned names, administrative, locality or tribal</p> <p>Hospital, Dispensary, Veterinary Hospital/Dispensary</p> <p>Aerodrome, Helipad, Tourist site</p> <p>Power line, with pylons surveyed, with poles unsurveyed</p>	

Description	Legend
Proposed Road in Forest	
<p><b>REFERENCE</b></p> <p>NW 14 National Highway No.14</p> <p><b>NOTES</b></p> <p>Heights are in metres and above Indian mean sea level.</p> <p>Contours are approximate.</p> <p>A relative height, 's' represents the approximate height, in metres, between the top and bottom of a steep slope.</p> <p>The triangulated heights and contours in this sheet have not been adjusted to the heights of the spirit-levelled bench-marks and may not be steady in accordance with them.</p> <p>Cart tracks in this sheet against which there is no descriptive remark are generally motorable (four-wheel drive).</p> <p>Distance stones along the railway are in miles.</p> <p>A relative height, e.g., 's', against a well, in blue, indicates its total depth in metres.</p> <p>Tanks, shown dry, in this area usually contain water from July to September.</p> <p>Limits of cultivation are variable and dependent on rainfall.</p> <p>Cactus is shown thus</p> <p><b>COMPILATION INDEX</b></p> <p>A Surveyed during 1997-00. Updated for major details during 2005-06.</p> <p><b>Projection - UTM Datum - WGS 84</b></p> <p>Magnetic Variation from True North about 0° in 2005. (Increasing by about 1° East annually).</p> <p>500 m to 1 cm 1:50,000 2 cm to 1 km 3 Kilometres</p> <p>CONTOUR INTERVAL 20 METRES</p> <p>For further details about this map, please contact Director Gujarat, Damán &amp; Diu Geo-Spatial Data Centre Survey of India, Sector-10(A) Gāndhinagar.</p>	



<b>S.No</b>	<b>Latitude</b>	<b>Longitude</b>	<b>S.No</b>	<b>Latitude</b>	<b>Longitude</b>
Start Point	24°29'33.80"N	72° 5'40.20"E	End Point	24°29'27.70"N	72° 5'41.50"E

Straightening and Widening of Valer to Ramun Road in valer village Dhanera Taluka District Banaskantha								Applicant
SR.No	Village	Taluka	District	Length in meter	Width in meter	Area in Sq.meter	Area in Ha.	
1	Valer	Dholera	Banaskantha	400	15	6000	0.600	
<b>Total</b>				<b>400</b>		<b>6000 Sq.mt</b>	<b>0.600 Ha</b>	