

निर्गत के लिए नहीं NOT FOR EXPORT

OPEN SERIES
MAP

No. F44A14

Scale 1:50,000

F44A9 (55/1)	F44A13 (55/13)	F44B1 (55/1)
F44A10 (55/10)	Sagar MADHYA PRADESH F44A14 (55/14)	F44B2 (55/12)
F44A11 (55/11)	F44A15 (55/15)	F44B3 (55/13)

1 Damoh, Madhya Pradesh.
2 Narsimhapur, Madhya Pradesh.

भारतीय सर्वेक्षण विभाग

SURVEY OF INDIA

1st Edition 2006.

Price : Rs. 50 / -

CONVENTIONAL SYMBOLS

- Express highway with toll with bridge with distance cross
- Roads, metalled according to importance
- Roads, double carriageway according to importance
- Unmetalled road, Cart-track, Path-track with pass, Post-path
- Stream with bank in deep undrained, Canal
- Dam: masonry or non-masonry, Weir
- River, dry with water channel, with bank & water, Tidal river
- Submerged river, Canal, Swamp, Marsh
- Water body, natural, Waterfall, Spring, Tarn, perennial dry
- Subsidence, sand or salt, Sand, Broken ground
- Station, level, gauge, electric single with station, other common
- Railway, other gauge, electric single with station, other do
- Mineral (see or recovery), Oil, Coal, with tunnel
- Channel with cut-section, Rocky slope, Cliff
- Steel structure (Bridges, etc.) (permanent), (temporary)
- Town or Village: built-up, scattered, Fort
- Place: permanent, temporary, Town, Antiquity
- Temple, Church, Mosque, Light, Tomb, Grave
- Uphillside, Light, Down, River, Lake, Unlighted, Arched
- Min. Vm or well, Green, Bush
- Water, perennial, other, Perennial, Cattle, Station, Other tank
- Area, cultivated, wooded, Forest, tree
- Boundary, International
- cross, commonly understood
- city, subdivision, town or city, town
- Boundary pillars, surveyed, uncoloured
- Height, triangulation station point, approximate
- Marsh, water, grassy, tundra, sand
- Post office, Telegraph office, Overhead tank
- Bus house or inspection bungalow, Check house, Police station
- Camping ground, Forest reserved, protected
- Spaced, common, establishment, locality or school
- Hospital, Dispensary, Veterinary, Hospital / Dispensary
- Aerodrome, Helipad, Tourist site
- Power line with pylons, surveyed with poles, unsurveyed

REFERENCE

101 20 National Highway No. 20

NOTES

Heights are in metres and above mean sea level.
Contours are approximate.
A relative height, e.g., 40, represents the approximate height, in metres, between the top and bottom of a steep slope.

COMPILED INDEX

A. Surveyed during 1950-70. Updated for major details during 1980-85.

Projection - UTM Datum - WGS 84

Magnetic Variation from True North about 2° West in 2005.
(Increasing by about 1° annually)

1:50,000

Scale 1:50,000
1 cm to 1 km
0 500 1000 2000 3000 4000 5000 6000 7000 8000 9000 10000
Metres

CONTOUR INTERVAL, 20 METRES

For further details about this map, please contact

Director

Madhya Pradesh Geo-Spatial Data Centre

Survey of India

Survey Colony, Vijaynagar

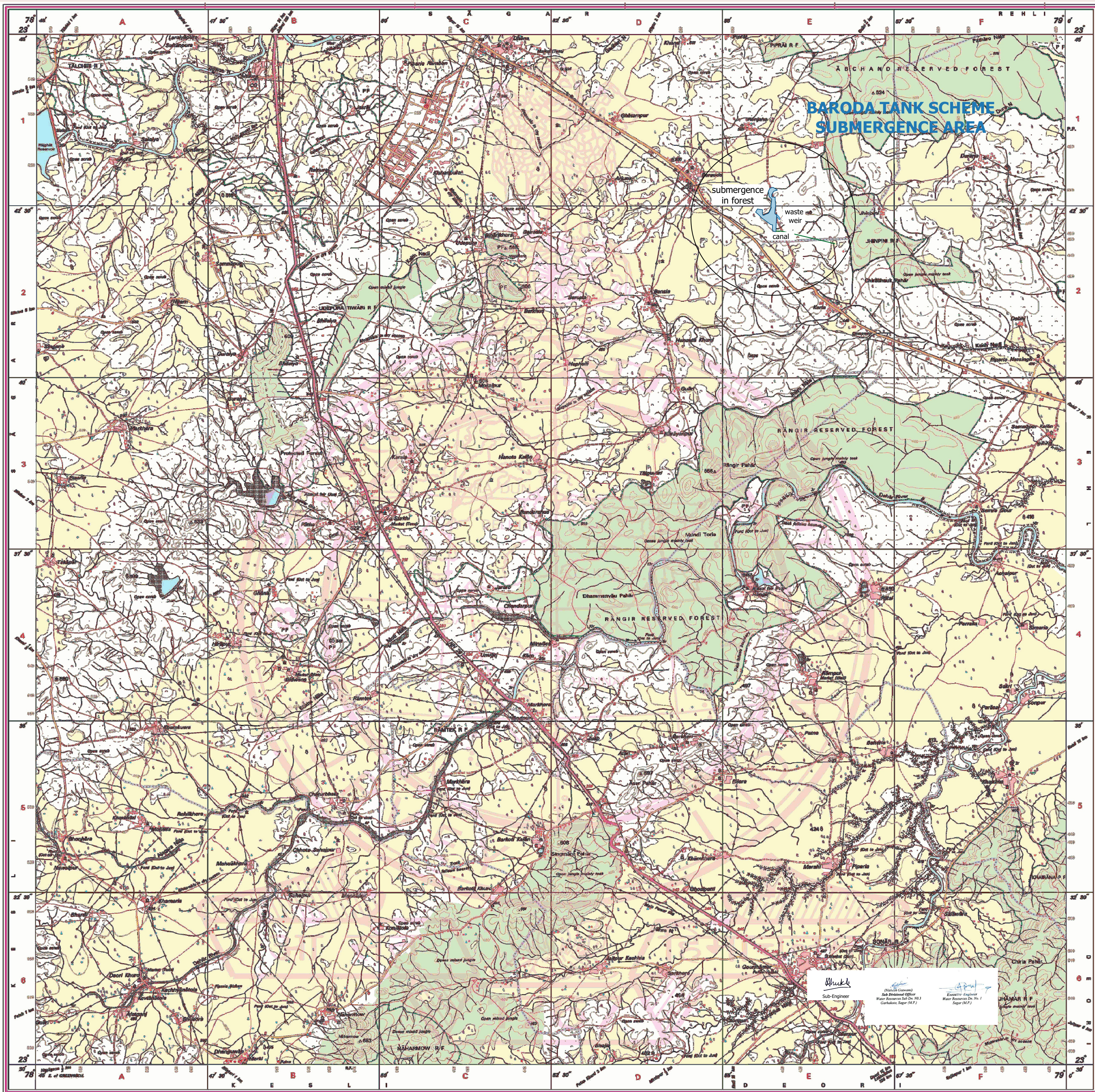
Jabalpur

Fax : 0761 - 2644688

WEBSITE : www.surveyofindia.gov.in

Reproduction in whole or part by any means is prohibited
without the written permission of Survey of India, the
National Mapping Agency.

GOVERNMENT OF INDIA COPYRIGHT, 2005.



REG. No. 9559-1976 D.S. (Madhya Pradesh) 100-A/1976-1977

भारत के सर्वेक्षण विभाग
Published under the direction of Surveyor General of India,
Survey of India, 116/116/116 Estate, Post Box No. 27, Dehradun - 248001 (Uttarakhand),
Department of Science & Technology, Government of India.

PRINTED AT THE WESTERN PRINTING GROUP OF SURVEY OF INDIA.