

**Name of Project:** Diversion of 0.80 ha. Reserved Forest land for the Construction of New Filter Plant, R.C.C. U/G Sump and Pump House for drinking water supply facility in 20 Villages of Godhra Taluka. Village: Gollav, Taluka: Godhra, District: Panchmahal in Gujarat State.

RESTRICTED

FIRST EDITION

PANCH MAHĀLS AND  
VADODARA DISTRICTS.

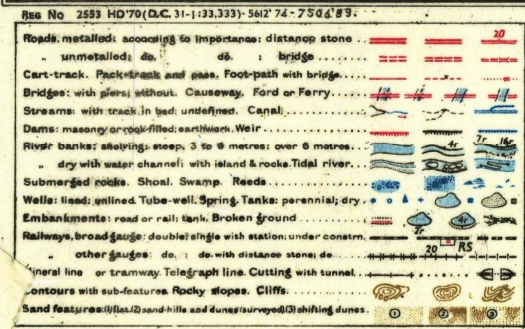
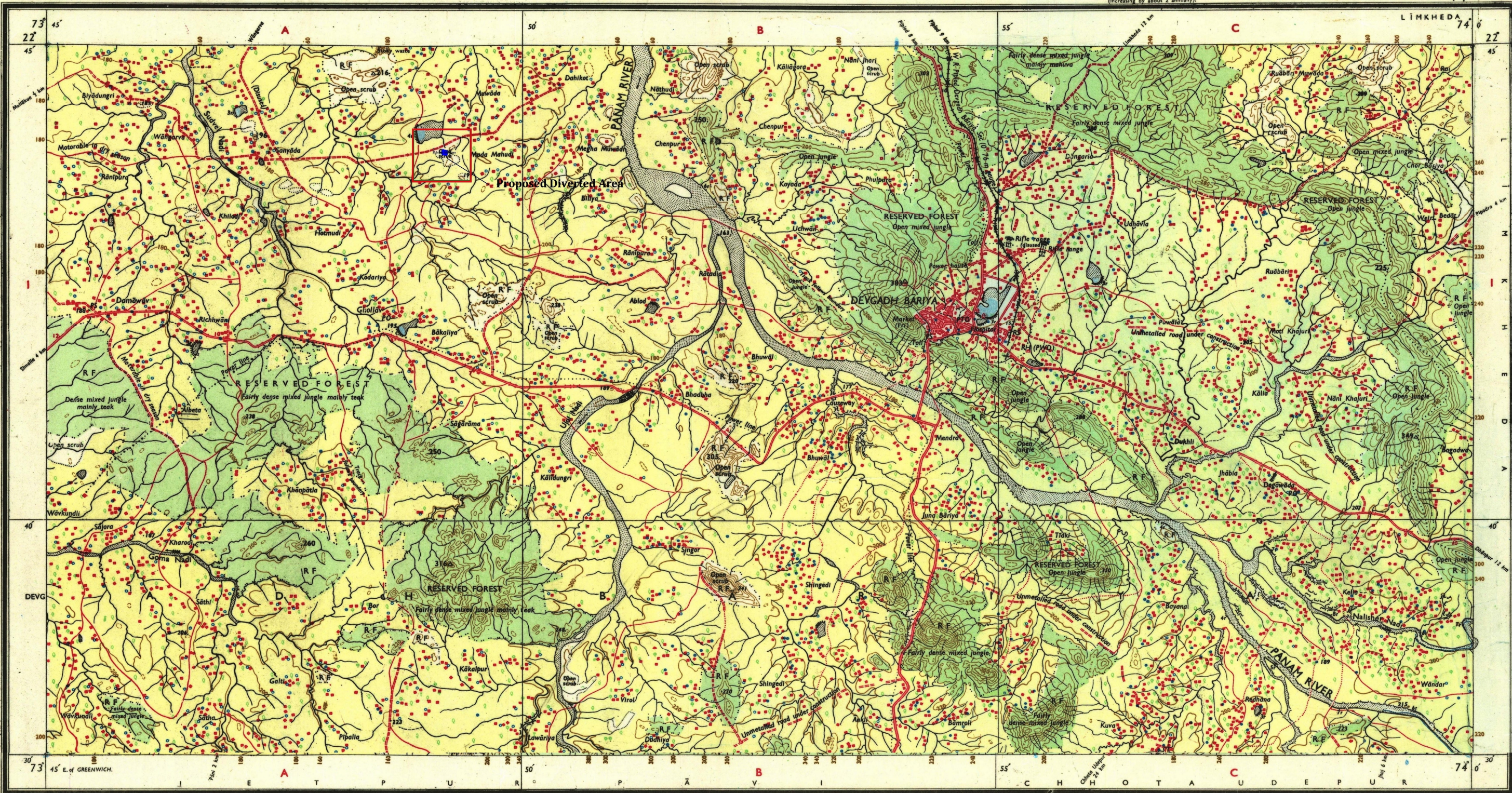
Surveyed 1968-69

GUJARĀT

Magnetic Variation from True North about 1° West in 1965.  
(Increasing by about 2' annually).

INDIA  
REFER TO THIS MAP AS :- 1:50,000  
SHEET 46 F/14 FIRST EDITION

No. 46 F/14



REFERENCE

Proposed New Filter Plant, R.C.C. U/G Sump and Pump House for drinking water supply facility in 20 Villages of Godhra Taluka. Village: Gollav

Published under the direction of Brigadier J.A.F. Dalal, B.A. (Hons), p.s.c., M.L.S., M.L.E., Officiating Surveyor General of India, 1970.

500 m to 1 cm  
1:50,000  
2 cm to 1 km  
7 Kilometres

HEIGHTS & CONTOURS IN METRES  
CONTOUR INTERVAL 20 METRES

Water features are shown in blue where they generally contain water.  
Cultivated areas are coloured yellow.  
The exterior boundaries of areas of Reserved or Protected Forests are shown by green ribands.

Contours are approximate.  
A relative height, *h*, represents the approximate height, in metres, between the top and bottom of a steep slope.  
Wooded areas are coloured green. Scattered trees and other vegetation are in green, but prominent surveyed trees are in black.

\* Not applicable.

The kilometre stone numbers along roads and the railway are shown in slant type, e.g., '5' whereas milestone numbers are shown in upright type, e.g., '5'.  
Cart-track and unmetalled roads in this sheet against which there is no descriptive remark are generally jeepable in dry season.  
Tanks, shown dig, in this area, usually contain water from July to February.  
Periodical cultivation occurs in the non-perennial portion of Panam River bed during summer.  
Cactus hedges generally exist along cart-tracks and field bunds.

Administrative Index



PRINTED AT THE GOVERNMENT PRINTING PRESS, SURVEY OF INDIA.

Towns or Villages: inhabited; deserted. Fort.

Huts: permanent; temporary. Tower. Antiquities.

Temple. Chhatra. Church. Mosque. Idgah. Tomb. Graves.

Lighthouse. Lightship. Buoy: lighted; unlighted. Anchorage.

Mine. Vine on walls. Grass. Scrub.

Palms: palmyra; other. Plantain. Conifer. Bamboo. Other trees.

Boundary: international.

state: demarcated; undemarcated.

district: subdivided; taluk or taluq forest.

Boundary pillars: surveyed; unlocated. village trijunction.

Heights: triangulated; station point: approximate. 200 200 200

Bench-mark: geodetic; tertiary; canal. BM 633 BM 633 .63

Post office. Telegraph office. Combined office. Police station. PO TO PTO PS

Bungalows: dak or travellers; inspection. Rest-house. DB IB / Canal RH Forest

Circuit house. Camping ground. Forest: reserved; protected. CH CG RF PF

Spaced names: administrative; locality or tribal. KIKRI NAGA

GOVERNMENT OF INDIA COPYRIGHT, 1970.  
Price: Ten Rupees.

Executive Engineer  
Public Health Works Division  
Godhra

RESTRICTED  
This map is NOT to be published, copied or reproduced in part or in whole either by photography or by any other means, should be kept in safe custody and handled by authorized persons only.

REFER TO THIS MAP AS :- 1:50,000  
46 F/14 FIRST EDITION