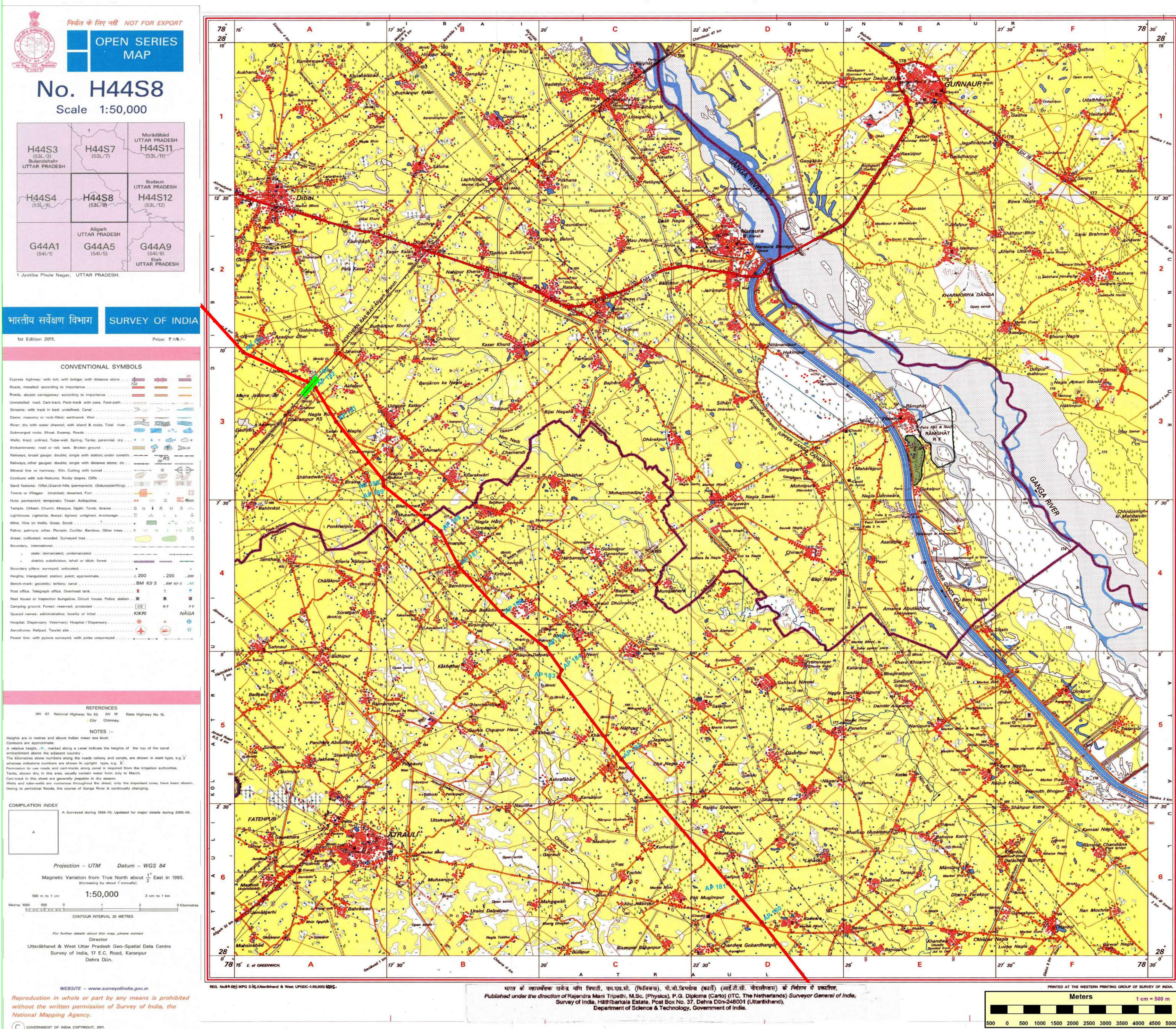


GHATAMPUR TRANSMISSION LIMITED

765 KV GHATAMPUR TPS - HAPUR(WUPPTCL) S/C TRANSMISSION LINE (BULANDSHAHR FOREST DIVISION)



ROUTE MAP

765 KV GHATAMPUR TPS - HAPUR(WUPPTCL) S/C TRANSMISSION LINE (BULANDSHAHR FOREST DIV.)



| SL NO | ROUTE NAME | TOTAL LENGTH(KM) | FOREST LENGTH(M) | NON FOREST LENGTH(M) | ROW WIDTH(M) | FOREST AREA IN HA. | NON FOREST AREA IN HA. |
|-------|---|------------------|------------------|----------------------|--------------|--------------------|------------------------|
| 1 | PROPOSED ROUTE (IN BULANDSHAHR DIV.) | 76.373000 | 42.00 | 76331.00 | 64 | 0.2688 | 488.518400 |

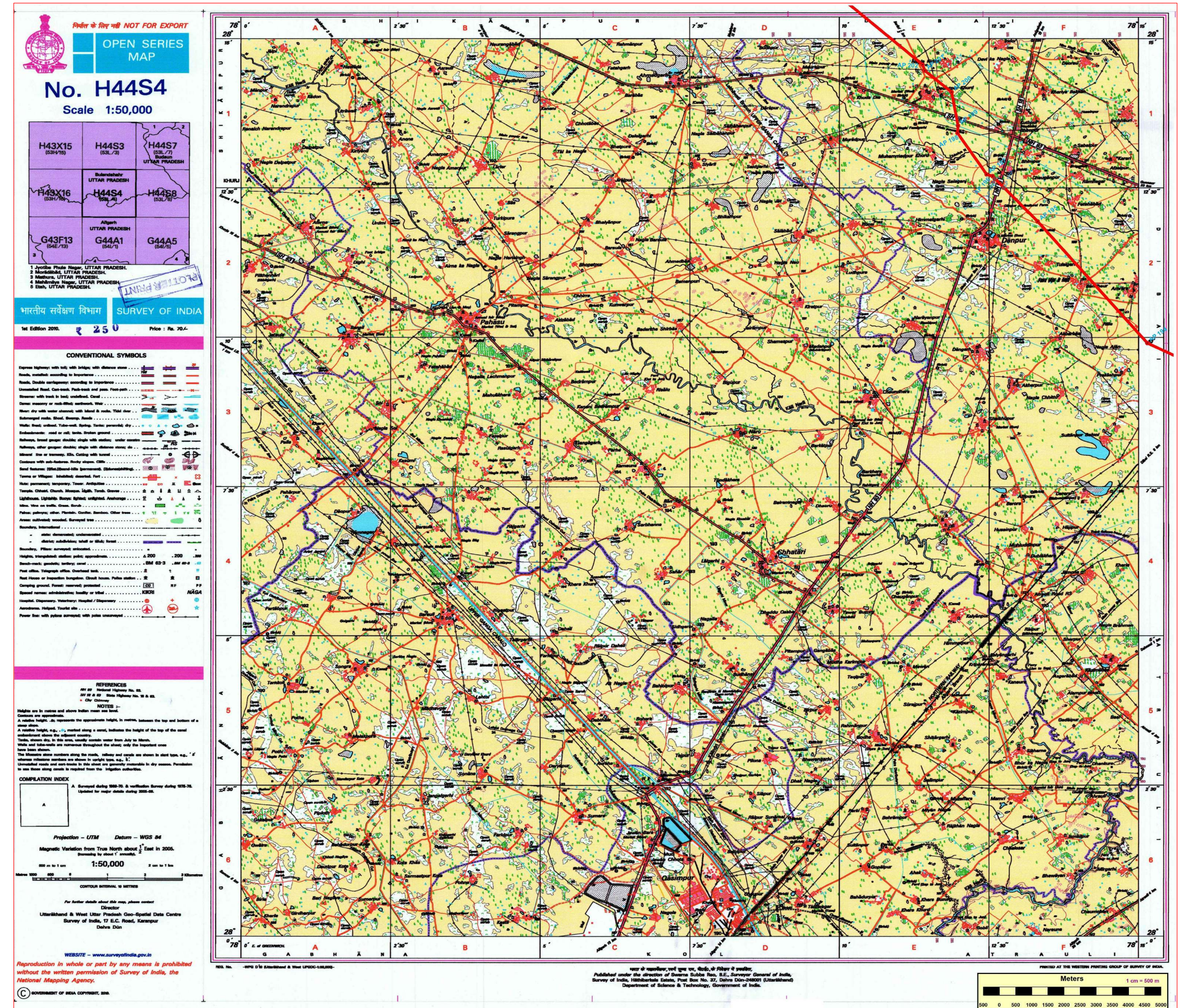
LEGENDS :-

| SL NO | DESCRIPTION | SYMBOL |
|-------|---|--------|
| 1 | Proposed Route Shown as..... | |
| 2 | Forest Involved Shown as..... | |
| 3 | Road, Railway line crossing (Non forest) shown as..... | |

| | |
|-------------------|--|
| PROJECT : | 765 KV GHATAMPUR TPS - HAPUR(WUPPTCL) S/C TRANSMISSION LINE |
| User Agency : | GHATAMPUR TRANSMISSION LIMITED |
| Dwg. Title : | 765 KV S/C GHATAMPUR TPS - HAPUR(WUPPTCL) PROPOSED TRANSMISSION LINE ROUTE (BULANDSHAHR FOREST DIVISION) |
| DATE - | DRAWING NO - GT/LG/H/11 |
| SHEET NO - 1 OF 5 | SCALE - 1 : 50000 |

GHATAMPUR TRANSMISSION LIMITED

765 KV GHATAMPUR TPS - HAPUR(WUPPTCL) S/C TRANSMISSION LINE (BULANDSHAHR FOREST DIVISION)



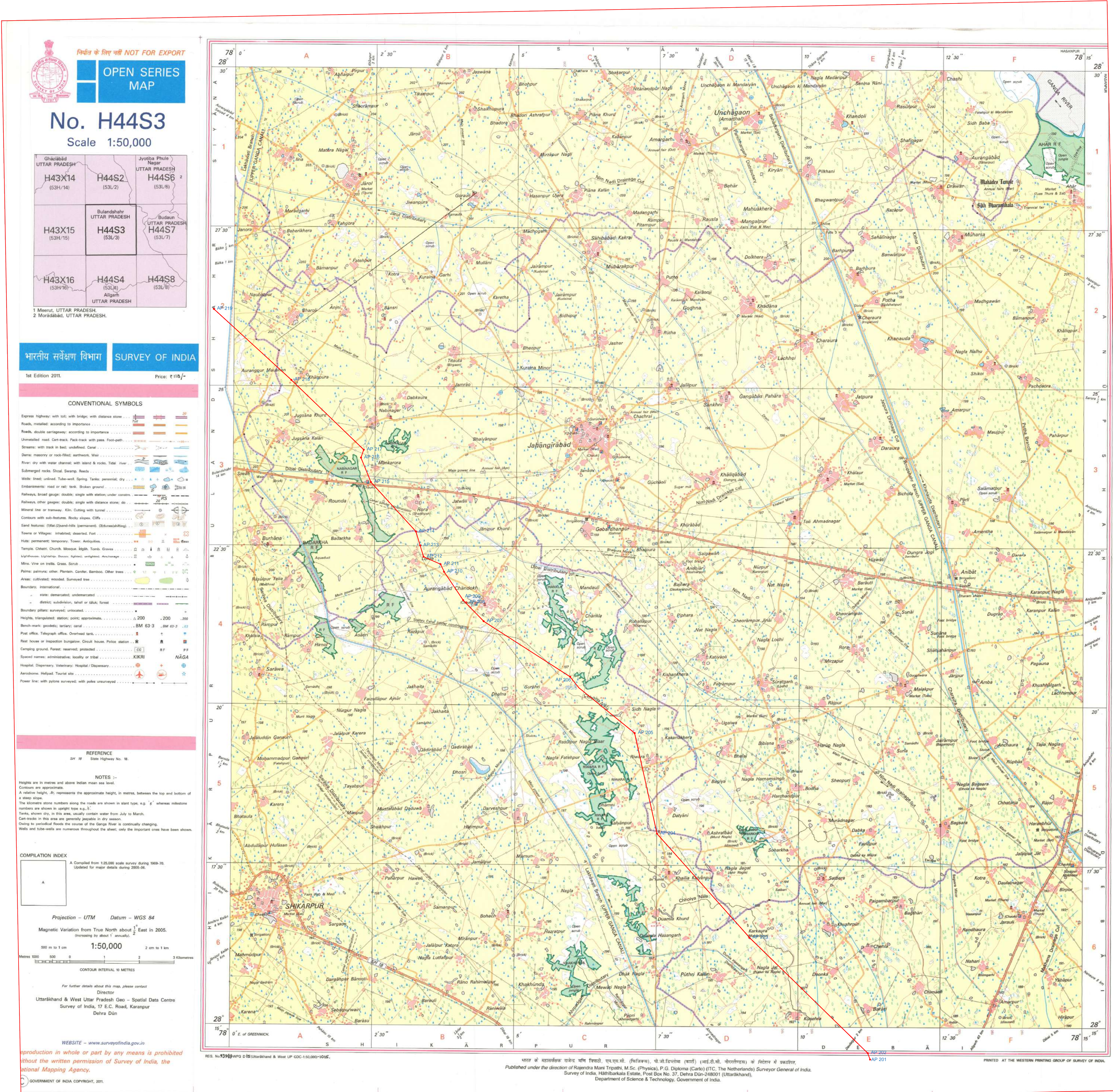
| ROUTE MAP | | | | | | | |
|---|---|------------------|------------------|----------------------|--------------|--------------------|------------------------|
| 765 KV GHATAMPUR TPS - HAPUR(WUPPTCL) S/C TRANSMISSION LINE (BULANDSHAHR FOREST DIV.) | | | | | | | |
| SL NO | ROUTE NAME | TOTAL LENGTH(KM) | FOREST LENGTH(M) | NON FOREST LENGTH(M) | ROW WIDTH(M) | FOREST AREA IN HA. | NON FOREST AREA IN HA. |
| 1 | PROPOSED ROUTE (IN BULANDSHAHR DIV.) | 76.373000 | 42.00 | 76331.00 | 64 | 0.2688 | 488.518400 |

| LEGENDS :- | |
|------------|--|
| SL NO | DESCRIPTION |
| 1 | Proposed Route Shown as..... |
| 2 | Forest Involved Shown as..... |
| 3 | Road,Railway line crossing (Non forest) shown as..... |

| | |
|-------------------|--|
| PROJECT : | 765 KV GHATAMPUR TPS - HAPUR(WUPPTCL) S/C TRANSMISSION LINE |
| User Agency : | GHATAMPUR TRANSMISSION LIMITED |
| Dwg. Title : | 765 KV S/C GHATAMPUR TPS - HAPUR(WUPPTCL) PROPOSED TRANSMISSION LINE ROUTE (BULANDSHAHR FOREST DIVISION) |
| DATE - | DRAWING NO - GTL/G-H/11 |
| SHEET NO - 2 OF 5 | SCALE - 1 : 50000 |

GHATAMPUR TRANSMISSION LIMITED

765 KV GHATAMPUR TPS - HAPUR(WUPPTCL) S/C TRANSMISSION LINE (BULANDSHAHR FOREST DIVISION)



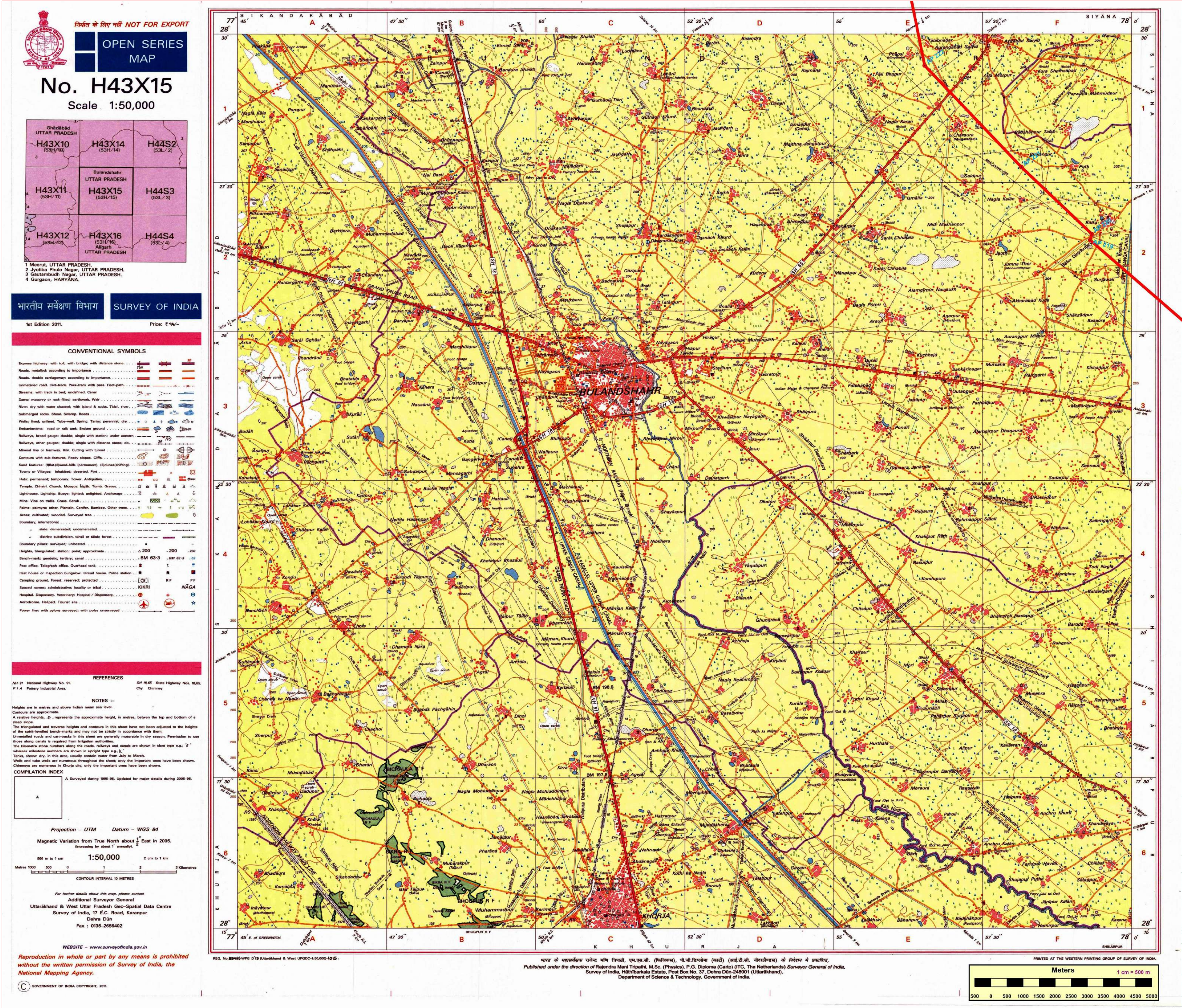
| ROUTE MAP | | | | | | | |
|---|--------------------------------------|------------------|------------------|----------------------|--------------|--------------------|------------------------|
| 765 KV GHATAMPUR TPS - HAPUR(WUPPTCL) S/C TRANSMISSION LINE (BULANDSHAHR FOREST DIV.) | | | | | | | |
| SL NO | ROUTE NAME | TOTAL LENGTH(KM) | FOREST LENGTH(M) | NON FOREST LENGTH(M) | ROW WIDTH(M) | FOREST AREA IN HA. | NON FOREST AREA IN HA. |
| 1 | PROPOSED ROUTE (IN BULANDSHAHR DIV.) | 76.373000 | 42.00 | 76331.00 | 64 | 0.2688 | 488.518400 |

| LEGENDS :- | | |
|------------|--|--------|
| SL NO | DESCRIPTION | SYMBOL |
| 1 | Proposed Route Shown as | |
| 2 | Forest Involved Shown as | |
| 3 | Road/Railway line crossing (Non forest) shown as | |

| | |
|-------------------|--|
| PROJECT : | 765 KV GHATAMPUR TPS - HAPUR(WUPPTCL) S/C TRANSMISSION LINE |
| User Agency : | GHATAMPUR TRANSMISSION LIMITED |
| Dwg. Title : | 765 KV S/C GHATAMPUR TPS - HAPUR(WUPPTCL) PROPOSED TRANSMISSION LINE ROUTE (BULANDSHAHR FOREST DIVISION) |
| DATE - | DRAWING NO - GTL/G-H/11 |
| SHEET NO - 3 OF 5 | SCALE - 1 : 50000 |

GHATAMPUR TRANSMISSION LIMITED

765 KV GHATAMPUR TPS - HAPUR(WUPPTCL) S/C TRANSMISSION LINE (BULANDSHAHR FOREST DIVISION)

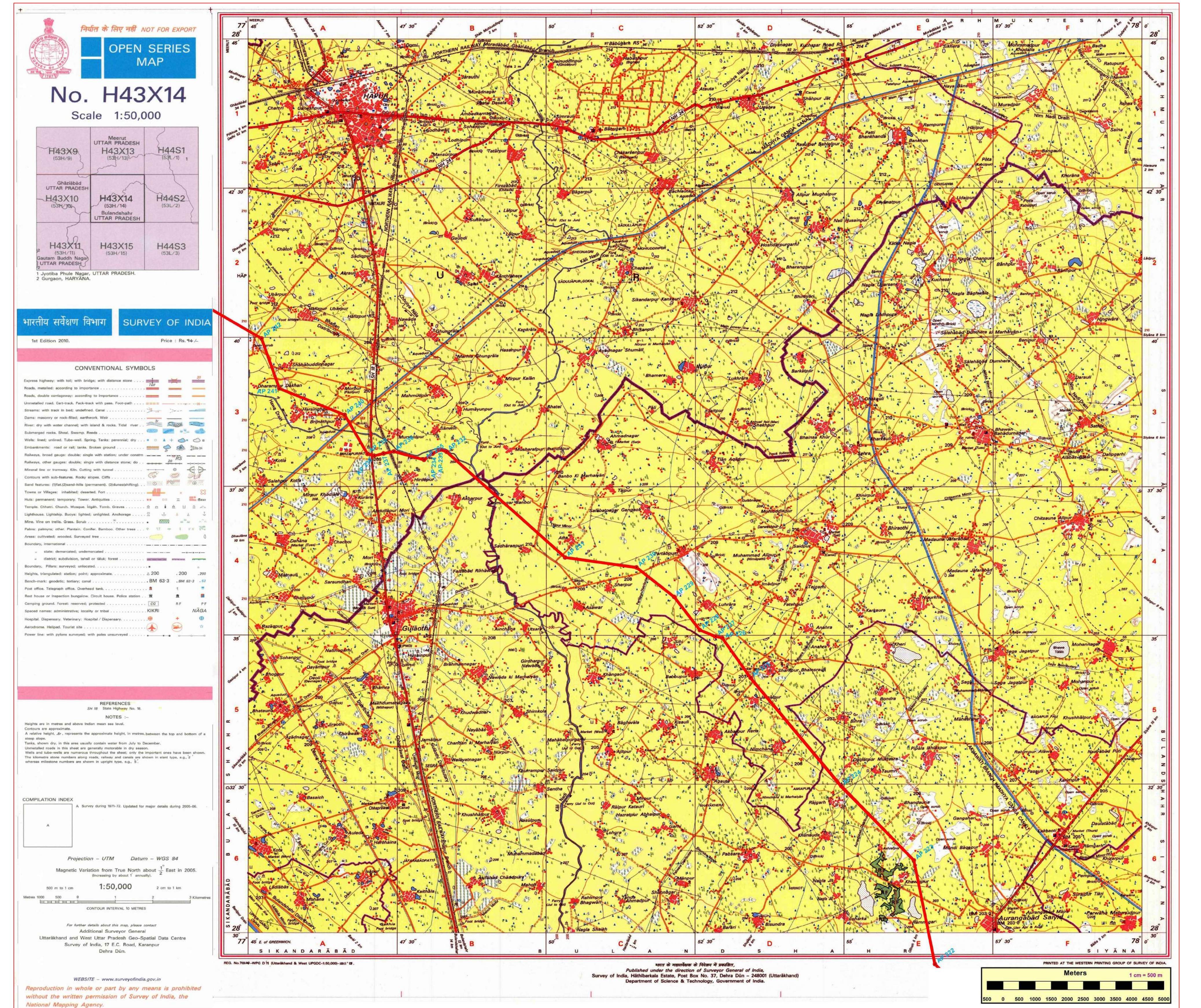


| SL NO | ROUTE NAME | TOTAL LENGTH(KM) | FOREST LENGTH(M) | NON FOREST LENGTH(M) | ROW WIDTH(M) | FOREST AREA IN HA. | NON FOREST AREA IN HA. |
|-------|---|------------------|------------------|----------------------|--------------|--------------------|------------------------|
| 1 | PROPOSED ROUTE (IN BULANDSHAHR DIV.) | 76.373000 | 42.00 | 76331.00 | 64 | 0.2688 | 488.518400 |

| | | | |
|-------------------|--|--|--|
| PROJECT : | | 765 KV GHATAMPUR TPS - HAPUR(WUPPTCL) S/C TRANSMISSION LINE | |
| User Agency : | | GHATAMPUR TRANSMISSION LIMITED | |
| Dwg. Title : | | 765 KV S/C GHATAMPUR TPS - HAPUR(WUPPTCL) PROPOSED TRANSMISSION LINE ROUTE (BULANDSHAHR FOREST DIVISION) | |
| DATE - | | DRAWING NO - GTL/G-H/11 | |
| SHEET NO - 4 OF 5 | | SCALE - 1 : 50000 | |

GHATAMPUR TRANSMISSION LIMITED

765 KV GHATAMPUR TPS - HAPUR(WUPPTCL) S/C TRANSMISSION LINE (BULANDSHAHR FOREST DIVISION)



ROUTE MAP

765 KV GHATAMPUR TPS - HAPUR(WUPPTCL) S/C
TRANSMISSION LINE (BULANDSHAHR FOREST DIV.)



| SL NO | ROUTE NAME | TOTAL LENGTH(KM) | FOREST LENGTH(M) | NON FOREST LENGTH(M) | ROW WIDTH(M) | FOREST AREA IN HA. | NON FOREST AREA IN HA. |
|-------|---|------------------|------------------|----------------------|--------------|--------------------|------------------------|
| 1 | PROPOSED ROUTE (IN BULANDSHAHR DIV.) | 76.373000 | 42.00 | 76331.00 | 64 | 0.2688 | 488.518400 |

LEGENDS :-

| SL NO | DESCRIPTION | SYMBOL |
|-------|---|--------|
| 1 | Proposed Route Shown as..... | |
| 2 | Forest Involved Shown as..... | |
| 3 | Road, Railway line crossing (Non forest) shown as..... | |

| | |
|-------------------|---|
| PROJECT : | 765 KV GHATAMPUR TPS - HAPUR(WUPPTCL) S/C TRANSMISSION LINE |
| User Agency : | GHATAMPUR TRANSMISSION LIMITED |
| Dwg. Title : | 765 KV S/C GHATAMPUR TPS - HAPUR(WUPPTCL) PROPOSED TRANSMISSION LINE ROUTE (BULANDSHAHR FOREST DIVISION) |
| DATE - | DRAWING NO - GT/LG-H/11 |
| SHEET NO - 5 OF 5 | SCALE - 1 : 50000 |